

# Product Datasheet

## Ribonuclease A Antibody Pair [HRP] NBP2-79414-15Plates

Unit Size: 15 Plates

Storage of components varies. See protocol for specific instructions.

[www.novusbio.com](http://www.novusbio.com)



[technical@novusbio.com](mailto:technical@novusbio.com)

Protocols, Publications, Related Products, Reviews, Research Tools and Images at:  
[www.novusbio.com/NBP2-79414](http://www.novusbio.com/NBP2-79414)

Updated 10/23/2024 v.20.1

Earn rewards for product  
reviews and publications.

Submit a publication at [www.novusbio.com/publications](http://www.novusbio.com/publications)

Submit a review at [www.novusbio.com/reviews/destination/NBP2-79414](http://www.novusbio.com/reviews/destination/NBP2-79414)



**NBP2-79414-15Plates****Ribonuclease A Antibody Pair [HRP]****Product Information**

<b>Unit Size</b>	15 Plates
<b>Concentration</b>	Concentration of individual antibodies may be found on the vial label. If unlisted please contact technical services.
<b>Storage</b>	Storage of components varies. See protocol for specific instructions.
<b>Conjugate</b>	HRP

**Product Description**

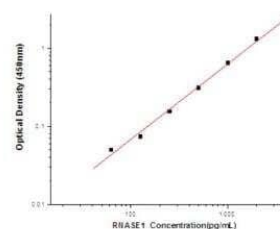
<b>Description</b>	Solid Phase sandwich ELISA for the quantitative determination of Human Ribonuclease A.
<b>Gene ID</b>	6035
<b>Gene Symbol</b>	RNASE1
<b>Species</b>	Human
<b>Specificity/Sensitivity</b>	This solid phase sandwich ELISA utilizes an antibody specific for Human Ribonuclease A.
<b>Kit Components</b>	Mouse Monoclonal Capture Antibody: (Catalog # <a href="#">NBP3-06165</a> ), Rabbit Polyclonal Detection Antibody (HRP-conjugated), Standard
<b>Standard Curve Range</b>	62.5-4000 pg/ml (example only; lot dependent)
<b>Sensitivity</b>	62.5 pg/ml (example only; lot dependent)
<b>Assay Type</b>	Sandwich ELISA
<b>Sample Volume</b>	100 ul

**Product Application Details**

<b>Applications</b>	ELISA, Sandwich ELISA
<b>Recommended Dilutions</b>	ELISA, Sandwich ELISA

**Images**

Sandwich ELISA: Ribonuclease A Antibody Pair [HRP] [NBP2-79414] - This standard curve is only for demonstration purposes. A standard curve should be generated for each assay.



Concentration ( pg/mL )	Zero standard subtracted OD
0	0
62.5	0.050
125	0.074
250	0.155
500	0.309
1000	0.646
2000	1.311
4000	2.339



### **Novus Biologicals USA**

10730 E. Briarwood Avenue  
Centennial, CO 80112  
USA  
Phone: 303.730.1950  
Toll Free: 1.888.506.6887  
Fax: 303.730.1966  
nb-customerservice@bio-techne.com

### **Bio-Techne Canada**

21 Canmotor Ave  
Toronto, ON M8Z 4E6  
Canada  
Phone: 905.827.6400  
Toll Free: 855.668.8722  
Fax: 905.827.6402  
canada.inquires@bio-techne.com

### **Bio-Techne Ltd**

19 Barton Lane  
Abingdon Science Park  
Abingdon, OX14 3NB, United Kingdom  
Phone: (44) (0) 1235 529449  
Free Phone: 0800 37 34 15  
Fax: (44) (0) 1235 533420  
info.EMEA@bio-techne.com

### **General Contact Information**

www.novusbio.com  
Technical Support: nb-technical@bio-techne.com  
Orders: nb-customerservice@bio-techne.com  
General: novus@novusbio.com

### **Products Related to NBP2-79414-15Plates**

---

NBP3-12164-10ug	Recombinant Human Ribonuclease A His Protein
NB100-56503	Cytochrome c Antibody (7H8.2C12) - BSA Free
NBP1-87804	Ribonuclease A Antibody
MAB1455	Albumin Antibody (188835) [Unconjugated] - Serum

---

### **Limitations**

This product is for research use only and is not approved for use in humans or in clinical diagnosis. Antibody Pairs are guaranteed for 6 months from date of receipt.

For more information on our 100% guarantee, please visit [www.novusbio.com/guarantee](http://www.novusbio.com/guarantee)

Earn gift cards/discounts by submitting a review: [www.novusbio.com/reviews/submit/NBP2-79414](http://www.novusbio.com/reviews/submit/NBP2-79414)

Earn gift cards/discounts by submitting a publication using this product:  
[www.novusbio.com/publications](http://www.novusbio.com/publications)

