

# Product Datasheet

## Liver Tissue Slides (Lupus)- Paraffin NBP2-78029

Unit Size: 5 Slides

Store at 4C.

[www.novusbio.com](http://www.novusbio.com)



[technical@novusbio.com](mailto:technical@novusbio.com)

Protocols, Publications, Related Products, Reviews, Research Tools and Images at:  
[www.novusbio.com/NBP2-78029](http://www.novusbio.com/NBP2-78029)

Updated 10/23/2024 v.20.1

Earn rewards for product  
reviews and publications.

Submit a publication at [www.novusbio.com/publications](http://www.novusbio.com/publications)

Submit a review at [www.novusbio.com/reviews/destination/NBP2-78029](http://www.novusbio.com/reviews/destination/NBP2-78029)



**NBP2-78029****Liver Tissue Slides (Lupus)- Paraffin**

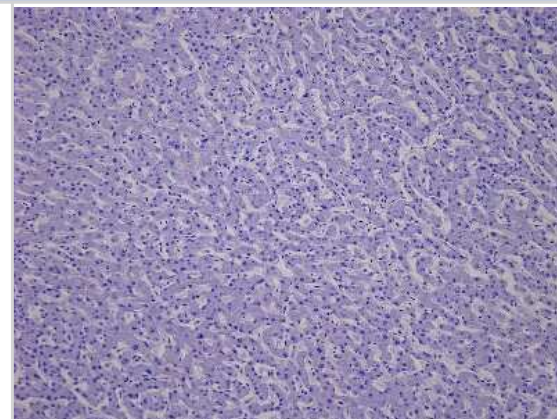
<b>Product Information</b>	
<b>Unit Size</b>	5 Slides
<b>Concentration</b>	Concentration is not relevant for this product. Please see the protocols for proper use of this product.
<b>Storage</b>	Store at 4C.

<b>Product Description</b>	
<b>Description</b>	<p>Each slide contains a single tissue section with 5 um thickness that is mounted on a positively charged glass slide. The slides included in this package are adjacent/serial sections of liver tissue from one donor. Tissue was fixed in formalin immediately after excision and embedded in paraffin. This product can be used for both immunohistochemistry and in-situ hybridization. At least one of the tissue slides from each lot was stained with H&amp;E to ensure the quality (not included in the package).</p> <p>Samples are IRB-approved from consented donors. Documentation on tissues' clinical histories may be available upon request. Donor information is also available upon request. Please contact nb-technical@bio-techne.com for any questions or requests.</p> <p>For FFPE DNA and RNA isolation, we may be able to provide tissue section slices in tubes. Please contact nb-custom@bio-techne.com for all custom requests related to this product.</p>
<b>Species</b>	Human
<b>Notes</b>	Donor information available upon request
<b>Lysate Type</b>	Tissue
<b>Lysate Tissue</b>	Liver
<b>Lysate Tissue Condition</b>	Lupus

<b>Product Application Details</b>	
<b>Applications</b>	Immunohistochemistry, Immunohistochemistry-Paraffin, In-situ Hybridization, Dual RNAscope ISH-IHC
<b>Recommended Dilutions</b>	Immunohistochemistry, Immunohistochemistry-Paraffin, In-situ Hybridization, Dual RNAscope ISH-IHC
<b>Application Notes</b>	Please bake slides at 60C for 30 minutes before use.

**Images**

Hematoxylin & Eosin Stain: Liver Tissue Slides (Lupus) [NBP2-78029] - Tissue: Human Liver, Pathology: Lupus





### **Novus Biologicals USA**

10730 E. Briarwood Avenue  
Centennial, CO 80112  
USA  
Phone: 303.730.1950  
Toll Free: 1.888.506.6887  
Fax: 303.730.1966  
nb-customerservice@bio-techne.com

### **Bio-Techne Canada**

21 Canmotor Ave  
Toronto, ON M8Z 4E6  
Canada  
Phone: 905.827.6400  
Toll Free: 855.668.8722  
Fax: 905.827.6402  
canada.inquires@bio-techne.com

### **Bio-Techne Ltd**

19 Barton Lane  
Abingdon Science Park  
Abingdon, OX14 3NB, United Kingdom  
Phone: (44) (0) 1235 529449  
Free Phone: 0800 37 34 15  
Fax: (44) (0) 1235 533420  
info.EMEA@bio-techne.com

### **General Contact Information**

www.novusbio.com  
Technical Support: nb-technical@bio-  
techne.com  
Orders: nb-customerservice@bio-techne.com  
General: novus@novusbio.com

### **Products Related to NBP2-78029**

---

NBP2-30221	Human Liver Tissue MicroArray (Cancer metastasis)
------------	---

---

### **Limitations**

This product is for research use only and is not approved for use in humans or in clinical diagnosis. Slides are guaranteed for 3 months from date of receipt.

For more information on our 100% guarantee, please visit [www.novusbio.com/guarantee](http://www.novusbio.com/guarantee)

Earn gift cards/discounts by submitting a review: [www.novusbio.com/reviews/submit/NBP2-78029](http://www.novusbio.com/reviews/submit/NBP2-78029)

Earn gift cards/discounts by submitting a publication using this product:  
[www.novusbio.com/publications](http://www.novusbio.com/publications)

