

Product Datasheet

Pineal Gland Tissue Slides (Adult Normal)- Paraffin NBP2-77770

Unit Size: 5 Slides

Store at 4C.

www.novusbio.com



technical@novusbio.com

Protocols, Publications, Related Products, Reviews, Research Tools and Images at:
www.novusbio.com/NBP2-77770

Updated 10/23/2024 v.20.1

Earn rewards for product
reviews and publications.

Submit a publication at www.novusbio.com/publications

Submit a review at www.novusbio.com/reviews/destination/NBP2-77770



NBP2-77770**Pineal Gland Tissue Slides (Adult Normal)- Paraffin**

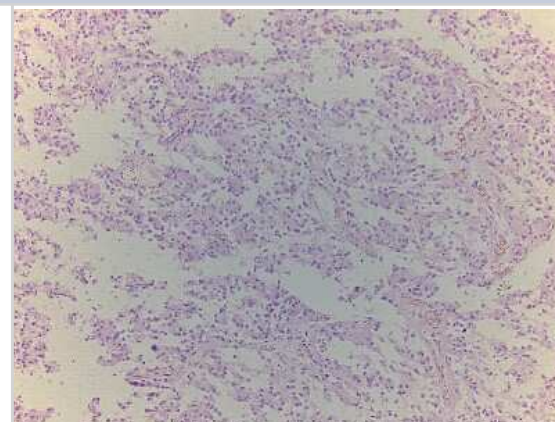
| Product Information | |
|----------------------------|--|
| Unit Size | 5 Slides |
| Concentration | Concentration is not relevant for this product. Please see the protocols for proper use of this product. |
| Storage | Store at 4C. |

| Product Description | |
|--------------------------------|--|
| Description | <p>Each slide contains a single tissue section with 5 um thickness that is mounted on a positively charged glass slide. The slides included in this package are adjacent/serial sections of pineal gland tissue from one donor. Tissue was fixed in formalin immediately after excision and embedded in paraffin. This product can be used for both immunohistochemistry and in-situ hybridization. At least one of the tissue slides from each lot was stained with H&E to ensure the quality (not included in the package).</p> <p>Samples are IRB-approved from consented donors. Documentation on tissues' clinical histories may be available upon request. Donor information is also available upon request. Please contact nb-technical@bio-techne.com for any questions or requests.</p> <p>For FFPE DNA and RNA isolation, we may be able to provide tissue section slices in tubes. Please contact nb-custom@bio-techne.com for all custom requests related to this product.</p> |
| Species | Human |
| Notes | Donor information available upon request |
| Lysate Type | Tissue |
| Lysate Tissue | Brain |
| Lysate Tissue Condition | Normal |
| Lysate Life Stage | Adult |

| Product Application Details | |
|------------------------------------|---|
| Applications | Immunohistochemistry-Paraffin, Immunohistochemistry, In-situ Hybridization, Dual RNAscope ISH-IHC |
| Recommended Dilutions | Immunohistochemistry, Immunohistochemistry-Paraffin, In-situ Hybridization, Dual RNAscope ISH-IHC |
| Application Notes | Please bake slides at 60C for 30 minutes before use. |

Images

Hematoxylin & Eosin Stain: Pineal Gland Tissue Slides (Adult Normal)
[NBP2-77770] - Tissue: Human Brain (Pineal Gland), Pathology: Normal





Novus Biologicals USA

10730 E. Briarwood Avenue
Centennial, CO 80112
USA
Phone: 303.730.1950
Toll Free: 1.888.506.6887
Fax: 303.730.1966
nb-customerservice@bio-techne.com

Bio-Techne Canada

21 Canmotor Ave
Toronto, ON M8Z 4E6
Canada
Phone: 905.827.6400
Toll Free: 855.668.8722
Fax: 905.827.6402
canada.inquires@bio-techne.com

Bio-Techne Ltd

19 Barton Lane
Abingdon Science Park
Abingdon, OX14 3NB, United Kingdom
Phone: (44) (0) 1235 529449
Free Phone: 0800 37 34 15
Fax: (44) (0) 1235 533420
info.EMEA@bio-techne.com

General Contact Information

www.novusbio.com
Technical Support: nb-technical@bio-techne.com
Orders: nb-customerservice@bio-techne.com
General: novus@novusbio.com

Limitations

This product is for research use only and is not approved for use in humans or in clinical diagnosis. Slides are guaranteed for 3 months from date of receipt.

For more information on our 100% guarantee, please visit www.novusbio.com/guarantee

Earn gift cards/discounts by submitting a review: www.novusbio.com/reviews/submit/NBP2-77770

Earn gift cards/discounts by submitting a publication using this product:
www.novusbio.com/publications

