

# Product Datasheet

## Brain Cerebellum Tissue Slides (Adult Normal Right)- Paraffin NBP2-77754

Unit Size: 5 Slides

Store at 4C.

[www.novusbio.com](http://www.novusbio.com)



[technical@novusbio.com](mailto:technical@novusbio.com)

### Publications: 1

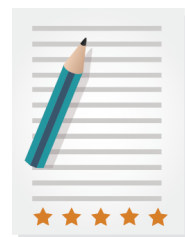
Protocols, Publications, Related Products, Reviews, Research Tools and Images at:  
[www.novusbio.com/NBP2-77754](http://www.novusbio.com/NBP2-77754)

Updated 10/23/2024 v.20.1

Earn rewards for product  
reviews and publications.

Submit a publication at [www.novusbio.com/publications](http://www.novusbio.com/publications)

Submit a review at [www.novusbio.com/reviews/destination/NBP2-77754](http://www.novusbio.com/reviews/destination/NBP2-77754)



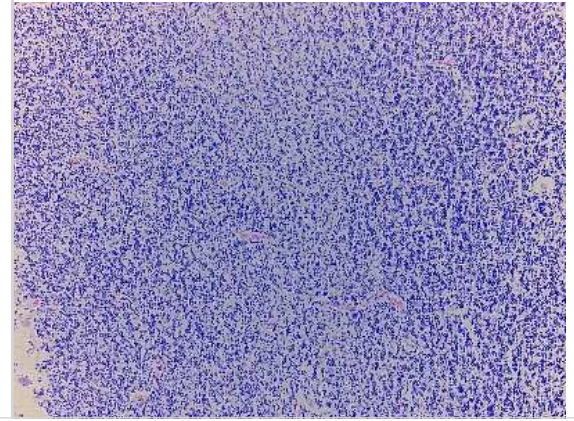
**NBP2-77754****Brain Cerebellum Tissue Slides (Adult Normal Right)- Paraffin**

| <b>Product Information</b>         |   |
|------------------------------------|---|
| <b>Unit Size</b>                   | 5 Slides  |
| <b>Concentration</b>               | Concentration is not relevant for this product. Please see the protocols for proper use of this product.  |
| <b>Storage</b>                     | Store at 4C.  |
| <b>Product Description</b>         |   |
| <b>Description</b>                 | <p>Each slide contains a single tissue section with 5 um thickness that is mounted on a positively charged glass slide. The slides included in this package are adjacent/serial sections of brain cerebellum tissue from one donor. Tissue was fixed in formalin immediately after excision and embedded in paraffin. This product can be used for both immunohistochemistry and in-situ hybridization. At least one of the tissue slides from each lot was stained with H&amp;E to ensure the quality (not included in the package).</p> <p>Samples are IRB-approved from consented donors. Documentation on tissues' clinical histories may be available upon request. Donor information is also available upon request. Please contact <a href="mailto:nb-technical@bio-techne.com">nb-technical@bio-techne.com</a> for any questions or requests.</p> <p>For FFPE DNA and RNA isolation, we may be able to provide tissue section slices in tubes. Please contact <a href="mailto:nb-custom@bio-techne.com">nb-custom@bio-techne.com</a> for all custom requests related to this product.</p> |
| <b>Species</b>                     | Human   |
| <b>Notes</b>                       | Donor information available upon request  |
| <b>Lysate Type</b>                 | Tissue  |
| <b>Lysate Tissue</b>               | Brain   |
| <b>Lysate Tissue Condition</b>     | Normal  |
| <b>Lysate Life Stage</b>           | Adult   |
| <b>Lysate Position</b>             | Right   |
| <b>Product Application Details</b> |   |
| <b>Applications</b>                | Immunohistochemistry, Immunohistochemistry-Paraffin, In-situ Hybridization, Dual RNAscope ISH-IHC   |
| <b>Recommended Dilutions</b>       | Immunohistochemistry, Immunohistochemistry-Paraffin, In-situ Hybridization, Dual RNAscope ISH-IHC   |
| <b>Application Notes</b>           | Please bake slides at 60C for 30 minutes before use.  |



## Images

Hematoxylin & Eosin Stain: Brain Cerebellum Tissue Slides (Adult Normal Right) [NBP2-77754] - Tissue: Human Brain (right Cerebellum), Pathology: Normal



## Publications

Yoon S, Boonpraman N, Kim CY et al. Reduction of fetuin-A levels contributes to impairment of Purkinje cells in cerebella of patients with Parkinson's disease BMB reports 2023-05-01 [PMID: 36935573] (IHC-P)



### **Novus Biologicals USA**

10730 E. Briarwood Avenue  
Centennial, CO 80112  
USA  
Phone: 303.730.1950  
Toll Free: 1.888.506.6887  
Fax: 303.730.1966  
nb-customerservice@bio-techne.com

### **Bio-Techne Canada**

21 Canmotor Ave  
Toronto, ON M8Z 4E6  
Canada  
Phone: 905.827.6400  
Toll Free: 855.668.8722  
Fax: 905.827.6402  
canada.inquires@bio-techne.com

### **Bio-Techne Ltd**

19 Barton Lane  
Abingdon Science Park  
Abingdon, OX14 3NB, United Kingdom  
Phone: (44) (0) 1235 529449  
Free Phone: 0800 37 34 15  
Fax: (44) (0) 1235 533420  
info.EMEA@bio-techne.com

### **General Contact Information**

www.novusbio.com  
Technical Support: nb-technical@bio-  
techne.com  
Orders: nb-customerservice@bio-techne.com  
General: novus@novusbio.com

### **Products Related to NBP2-77754**

---

|             |   |
|-------------|---|
| NB820-59180 | Human Brain Cerebellum Whole Tissue Lysate (Adult Whole Normal) |
|-------------|---|

---

### **Limitations**

This product is for research use only and is not approved for use in humans or in clinical diagnosis. Slides are guaranteed for 3 months from date of receipt.

For more information on our 100% guarantee, please visit [www.novusbio.com/guarantee](http://www.novusbio.com/guarantee)

Earn gift cards/discounts by submitting a review: [www.novusbio.com/reviews/submit/NBP2-77754](http://www.novusbio.com/reviews/submit/NBP2-77754)

Earn gift cards/discounts by submitting a publication using this product:  
[www.novusbio.com/publications](http://www.novusbio.com/publications)

