

Product Datasheet

Kallikrein 3/PSA Antibody (RM323) NBP2-77416

Unit Size: 100 ul

Store at -20C. Avoid freeze-thaw cycles.

www.novusbio.com



technical@novusbio.com

Protocols, Publications, Related Products, Reviews, Research Tools and Images at:
www.novusbio.com/NBP2-77416

Updated 10/23/2024 v.20.1

Earn rewards for product
reviews and publications.

Submit a publication at www.novusbio.com/publications

Submit a review at www.novusbio.com/reviews/destination/NBP2-77416

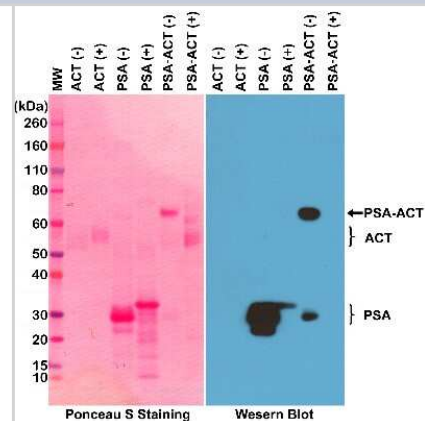


NBP2-77416**Kallikrein 3/PSA Antibody (RM323)**

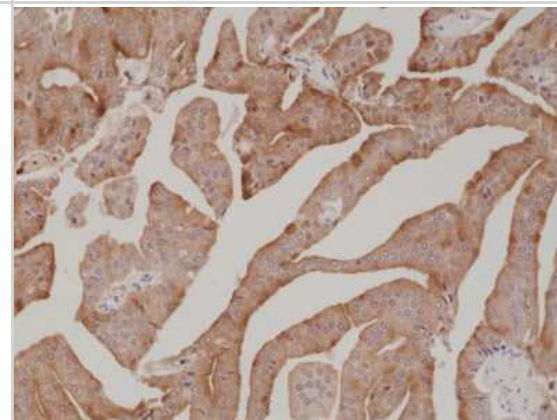
Product Information	
Unit Size	100 ul
Concentration	Please see the vial label for concentration. If unlisted please contact technical services.
Storage	Store at -20C. Avoid freeze-thaw cycles.
Clonality	Monoclonal
Clone	RM323
Preservative	0.09% Sodium Azide
Isotype	IgG
Purity	Protein A purified
Buffer	50% Glycerol/PBS, 1% BSA
Product Description	
Host	Rabbit
Gene ID	354
Gene Symbol	KLK3
Species	Human
Specificity/Sensitivity	This antibody reacts to native human Kallikrein 3/PSA, including both free (unbound) form and in a complex with ACT (alpha 1-antichymotrypsin). It may react to reduced Kallikrein 3/PSA at a higher concentration.
Immunogen	Native Kallikrein 3/PSA protein purified from human seminal fluid
Product Application Details	
Applications	Western Blot, ELISA, Immunohistochemistry
Recommended Dilutions	Western Blot 1:1000 - 1:2500 (non-reducing conditions), ELISA 1:100 - 1:5000, Immunohistochemistry 1:500 - 1:1000

Images

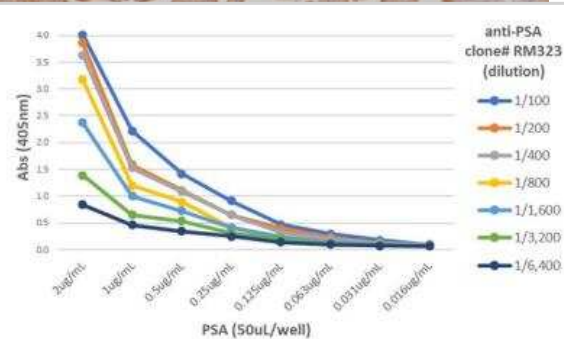
Western Blot: Kallikrein 3/PSA Antibody (RM323) [NBP2-77416] - Western Blot of PSA (purified from human seminal fluid), ACT (alpha 1-antichymotrypsin, from human plasma), and PSA-ACT complex, under non-reduced (-) or reduced (+) conditions, using NBP2-77416.



Immunohistochemistry: Kallikrein 3/PSA Antibody (RM323) [NBP2-77416] - Immunohistochemical staining of formalin fixed and paraffin embedded human prostate cancer tissue section using NBP2-77416.



ELISA: Kallikrein 3/PSA Antibody (RM323) [NBP2-77416] - A titer ELISA of PSA (purified from human seminal fluid). The plate was coated with different amounts of PSA. A serial dilution of NBP2-77416 was used as the primary antibody. An alkaline phosphatase conjugated anti-rabbit IgG as the secondary antibody.





Novus Biologicals USA

10730 E. Briarwood Avenue
Centennial, CO 80112
USA
Phone: 303.730.1950
Toll Free: 1.888.506.6887
Fax: 303.730.1966
nb-customerservice@bio-techne.com

Bio-Techne Canada

21 Canmotor Ave
Toronto, ON M8Z 4E6
Canada
Phone: 905.827.6400
Toll Free: 855.668.8722
Fax: 905.827.6402
canada.inquires@bio-techne.com

Bio-Techne Ltd

19 Barton Lane
Abingdon Science Park
Abingdon, OX14 3NB, United Kingdom
Phone: (44) (0) 1235 529449
Free Phone: 0800 37 34 15
Fax: (44) (0) 1235 533420
info.EMEA@bio-techne.com

General Contact Information

www.novusbio.com
Technical Support: nb-technical@bio-techne.com
Orders: nb-customerservice@bio-techne.com
General: novus@novusbio.com

Products Related to NBP2-77416

HAF008	Goat anti-Rabbit IgG Secondary Antibody [HRP]
NB7160	Goat anti-Rabbit IgG (H+L) Secondary Antibody [HRP]
NBP2-24891	Rabbit IgG Isotype Control
NBP2-61380-1mg	Recombinant Human Kallikrein 3/PSA Protein

Limitations

This product is for research use only and is not approved for use in humans or in clinical diagnosis. Primary Antibodies are guaranteed for 1 year from date of receipt.

For more information on our 100% guarantee, please visit www.novusbio.com/guarantee

Earn gift cards/discounts by submitting a review: www.novusbio.com/reviews/submit/NBP2-77416

Earn gift cards/discounts by submitting a publication using this product:
www.novusbio.com/publications

