

# Product Datasheet

## TLR8 Antibody (44C143) - Azide and BSA Free NBP2-77073

Unit Size: 0.1 mg

Store at 4C short term. Aliquot and store at -20C long term. Avoid freeze-thaw cycles.

[www.novusbio.com](http://www.novusbio.com)



[technical@novusbio.com](mailto:technical@novusbio.com)

Protocols, Publications, Related Products, Reviews, Research Tools and Images at:  
[www.novusbio.com/NBP2-77073](http://www.novusbio.com/NBP2-77073)

Updated 4/13/2025 v.20.1

Earn rewards for product  
reviews and publications.

Submit a publication at [www.novusbio.com/publications](http://www.novusbio.com/publications)

Submit a review at [www.novusbio.com/reviews/destination/NBP2-77073](http://www.novusbio.com/reviews/destination/NBP2-77073)



**NBP2-77073**

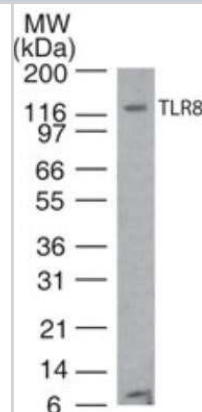
TLR8 Antibody (44C143) - Azide and BSA Free

Product Information	
Unit Size	0.1 mg
Concentration	1.0 mg/ml
Storage	Store at 4C short term. Aliquot and store at -20C long term. Avoid freeze-thaw cycles.
Clonality	Monoclonal
Clone	44C143
Preservative	No Preservative
Isotype	IgG1 Kappa
Purity	Protein G purified
Buffer	PBS pH 7.4
Product Description	
Host	Mouse
Gene ID	51311
Gene Symbol	TLR8
Species	Human, Mouse, Rabbit
Immunogen	This antibody was developed against a KLH-conjugated synthetic peptide of human TLR8, within amino acids 750-850.
Product Application Details	
Applications	Western Blot, Simple Western, Flow Cytometry, Flow (Intracellular), Immunocytochemistry/ Immunofluorescence, Immunohistochemistry, Immunohistochemistry-Paraffin, CyTOF-ready
Recommended Dilutions	Western Blot 1-3 ug/ml, Simple Western 20 ug/ml, Flow Cytometry 0.5-1 ug/10 <sup>6</sup> cells, Immunohistochemistry, Immunocytochemistry/ Immunofluorescence, Immunohistochemistry-Paraffin 5 ug/ml, Flow (Intracellular) reported in scientific literature (PMID 24836676), CyTOF-ready
Application Notes	<p>Staining of formalin-fixed tissues is enhanced by boiling tissue sections in 10 mM sodium citrate buffer, pH 6.0 for 10-20 min followed by cooling at RT for 20 min.</p> <p>In Simple Western only 10 - 15 ul of the recommended dilution is used per data point.</p> <p>See <a href="#">Simple Western Antibody Database</a> for Simple Western validation: antibody dilution of 20 ug/mL. Separated by Size-Wes, Sally Sue/Peggy Sue. This antibody is CyTOF ready.</p>

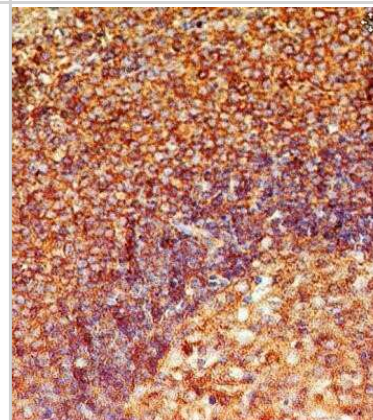


## Images

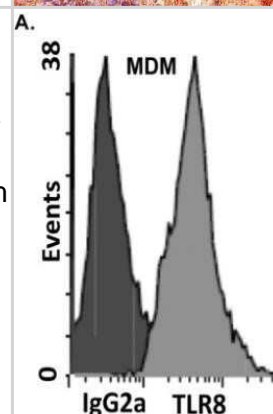
Western Blot: TLR8 Antibody (44C143) - Azide Free [NBP2-77073] - Analysis of TLR8 in human Ramos cell lysate. Goat anti-mouse Ig HRP secondary antibody and PicoTect ECL substrate solution were used for this test. Image from the standard format of this antibody.



Immunohistochemistry-Paraffin: TLR8 Antibody (44C143) - Azide Free [NBP2-77073] - Formalin-fixed, paraffin-embedded human spleen stained with TLR8 antibody at 2 ug/ml. Image from the standard format of this antibody.



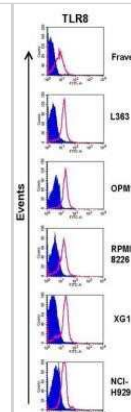
Flow Cytometry: TLR8 Antibody (44C143) - Azide Free [NBP2-77073] - Intracellular expression of TLR8 in monocyte-derived macrophages (MDMs). MDMs which were incubated with PE-conjugated anti-TLR8 or isotype antibody control. Intracellular expression was determined by flow cytometry. Representative profiles were similar in four independent experiments (n=4 subjects). Image collected and cropped by CiteAb from the following publication ([//doi.org/10.1371/journal.pone.0104039](https://doi.org/10.1371/journal.pone.0104039)) licensed under a CC-BY license. Image from the standard format of this antibody.



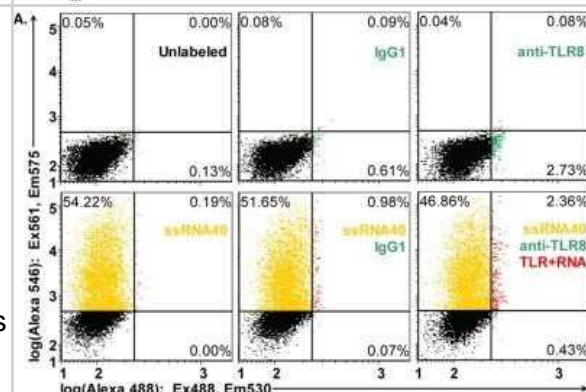
Western Blot: TLR8 Antibody (44C143) - Azide Free [NBP2-77073] - All the cell lines expressed mRNA for TLR8 (Figure 1) and displayed a strong expression of TLR8 protein (Figure 2). Lysates of human intestinal tissue and mouse splenocytes were used as positive controls. Beta-actin was served as loading control and was used to normalize expression levels between cells. Data are representative for analysis of  $\geq 2$  independent experiments. Image collected and cropped by CiteAb from the following publication ([//doi.org/10.1371/journal.pone.0060671](https://doi.org/10.1371/journal.pone.0060671)) licensed under a CC-BY license. Image from the standard format of this antibody.



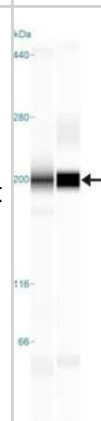
Flow Cytometry: TLR8 Antibody (44C143) - Azide Free [NBP2-77073] - Expression of TLR8 in Fravel, L363, OPM1, RPMI8226, XG1, and NCI-H929 as determined by flow cytometry. HCMLs were stained using an intracellular staining protocol with TLR8 antibodies followed by relevant secondary fluorescent-conjugated antibodies. Filled histograms (purple) represent the isotype controls and the open histograms (red) indicate TLR8. Data are representative for analysis of  $\geq 2$  independent experiments. Image collected and cropped by CiteAb from the following publication ([//doi.org/10.1371/journal.pone.0060671](https://doi.org/10.1371/journal.pone.0060671)) licensed under a CC-BY license. Image from the standard format of this antibody.



Flow Cytometry: TLR8 Antibody (44C143) - Azide Free [NBP2-77073] - HEK cells expressing TLR8 were treated with ssRNA40-Alexa 546 followed by fixation, permeabilization and staining for TLR8 using anti-TLR8 Alexa 488 conjugate or isotype control IgG1/Kappa Alexa 488. TLR8 detection is shown along the horizontal axis, and ssRNA40 Alexa 546 detection is shown along the vertical axis. Direct excitation (488 and 561 nm lasers) of both fluorophores (Alexa 488 and Alexa 546) allowed quantitation of cells staining positive for TLR8 (anti-TLR8-Alexa488) and cells that had taken up ssRNA40-Alexa 546. Single-stranded RNA40 binds TLR8 (flow cytometry FRET assay). A representative experiment is shown from three independent experiments with similar results. Image collected and cropped by CiteAb from the following publication ([//doi.org/10.1371/journal.pone.0104039](https://doi.org/10.1371/journal.pone.0104039)) licensed under a CC-BY license. Image from the standard format of this antibody.



Simple Western: TLR8 Antibody (44C143) - Azide Free [NBP2-77073] - Simple Western lane view shows a specific band for TLR8 in 0.5 mg/ml of Ramos (left) and Human Spleen (right) lysate. This experiment was performed under reducing conditions using the 12-230 kDa separation system. \* Non-specific interaction with the 230 kDa Simple Western standard may be seen with this antibody Image from the standard format of this antibody.





### **Novus Biologicals USA**

10730 E. Briarwood Avenue  
Centennial, CO 80112  
USA  
Phone: 303.730.1950  
Toll Free: 1.888.506.6887  
Fax: 303.730.1966  
nb-customerservice@bio-techne.com

### **Bio-Techne Canada**

21 Canmotor Ave  
Toronto, ON M8Z 4E6  
Canada  
Phone: 905.827.6400  
Toll Free: 855.668.8722  
Fax: 905.827.6402  
canada.inquires@bio-techne.com

### **Bio-Techne Ltd**

19 Barton Lane  
Abingdon Science Park  
Abingdon, OX14 3NB, United Kingdom  
Phone: (44) (0) 1235 529449  
Free Phone: 0800 37 34 15  
Fax: (44) (0) 1235 533420  
info.EMEA@bio-techne.com

### **General Contact Information**

www.novusbio.com  
Technical Support: nb-technical@bio-techne.com  
Orders: nb-customerservice@bio-techne.com  
General: novus@novusbio.com

### **Products Related to NBP2-77073**

---

HAF007	Goat anti-Mouse IgG Secondary Antibody [HRP]
NB720-B	Rabbit anti-Mouse IgG (H+L) Secondary Antibody [Biotin]
NBP1-43319-0.5mg	Mouse IgG1 Kappa Isotype Control (P3.6.2.8.1)
NBP1-85767PEP	TLR8 Recombinant Protein Antigen

---

### **Limitations**

This product is for research use only and is not approved for use in humans or in clinical diagnosis. Primary Antibodies are guaranteed for 1 year from date of receipt.

For more information on our 100% guarantee, please visit [www.novusbio.com/guarantee](http://www.novusbio.com/guarantee)

Earn gift cards/discounts by submitting a review: [www.novusbio.com/reviews/submit/NBP2-77073](http://www.novusbio.com/reviews/submit/NBP2-77073)

Earn gift cards/discounts by submitting a publication using this product:  
[www.novusbio.com/publications](http://www.novusbio.com/publications)

