

# Product Datasheet

## BANF1 Antibody (JG40-43)

### NBP2-76978

Unit Size: 100 ul

Store at 4C short term. Aliquot and store at -20C long term. Avoid freeze-thaw cycles.

[www.novusbio.com](http://www.novusbio.com)



[technical@novusbio.com](mailto:technical@novusbio.com)

Protocols, Publications, Related Products, Reviews, Research Tools and Images at:  
[www.novusbio.com/NBP2-76978](http://www.novusbio.com/NBP2-76978)

Updated 9/9/2025 v.20.1

Earn rewards for product  
reviews and publications.

Submit a publication at [www.novusbio.com/publications](http://www.novusbio.com/publications)

Submit a review at [www.novusbio.com/reviews/destination/NBP2-76978](http://www.novusbio.com/reviews/destination/NBP2-76978)



**NBP2-76978**

BANF1 Antibody (JG40-43)

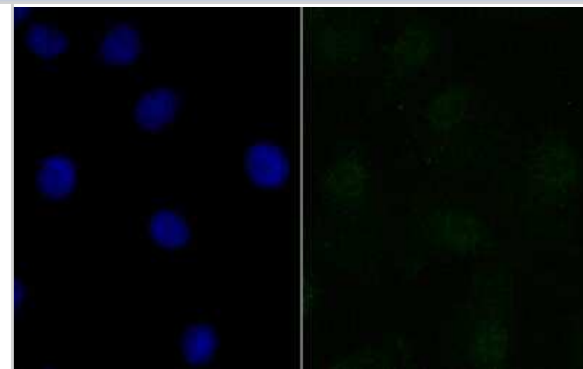
Product Information	
Unit Size	100 ul
Concentration	1 mg/ml
Storage	Store at 4C short term. Aliquot and store at -20C long term. Avoid freeze-thaw cycles.
Clonality	Monoclonal
Clone	JG40-43
Preservative	0.05% Sodium Azide
Isotype	IgG
Purity	Protein A purified
Buffer	TBS (pH7.4), 0.05% BSA, 40% Glycerol
Target Molecular Weight	10 kDa

Product Description	
Description	Novus Biologicals Rabbit BANF1 Antibody (JG40-43) (NBP2-76978) is a recombinant monoclonal antibody validated for use in IHC, WB, Flow and ICC/IF. All Novus Biologicals antibodies are covered by our 100% guarantee.
Host	Rabbit
Gene ID	8815
Gene Symbol	BANF1
Species	Human, Mouse, Rat
Immunogen	Synthetic peptide within Human BANF1 aa 1-50 / 89. (SwissProt: O75531 Human; SwissProt: O54962 Mouse; SwissProt: Q9R1T1 Rat)

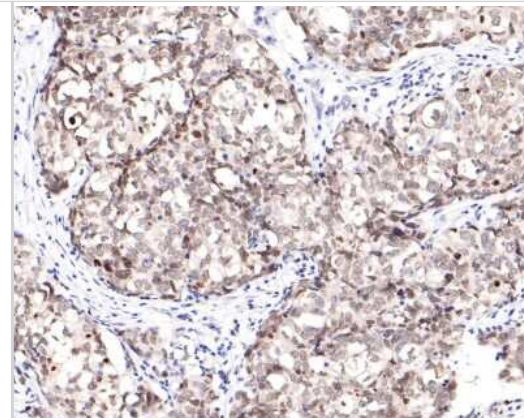
Product Application Details	
Applications	Western Blot, Immunohistochemistry-Paraffin, Flow Cytometry, Immunocytochemistry/ Immunofluorescence, Immunohistochemistry
Recommended Dilutions	Western Blot 1:500, Flow Cytometry 1:50-1:100, Immunohistochemistry, Immunocytochemistry/ Immunofluorescence 1:50-1:100, Immunohistochemistry-Paraffin 1:50-1:500

**Images**

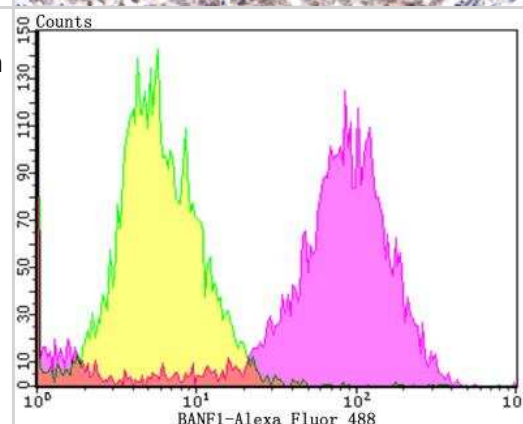
Immunocytochemistry/Immunofluorescence: BANF1 Antibody (JG40-43) [NBP2-76978] - ICC staining BANF1 in A549 cells (green). The nuclear counter stain is DAPI (blue). Cells were fixed in paraformaldehyde, permeabilised with 0.25% Triton X100/PBS.



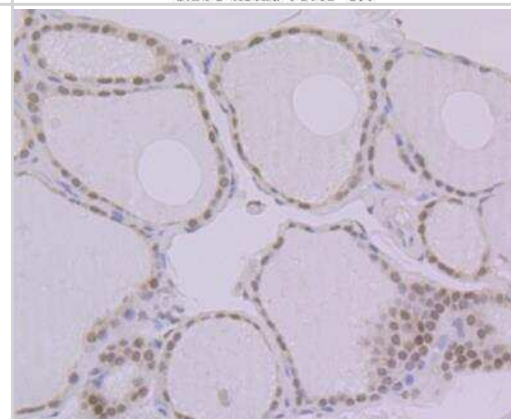
**Immunohistochemistry-Paraffin: BANF1 Antibody (JG40-43) [NBP2-76978]** - Analysis of paraffin-embedded human breast carcinoma tissue using anti-BANF1 antibody. The section was pre-treated using heat mediated antigen retrieval with sodium citrate buffer (pH 6.0) for 20 minutes. The tissues were blocked in 1% BSA for 30 minutes at room temperature, washed with ddH<sub>2</sub>O and PBS, and then probed with the primary antibody (1/400) for 30 minutes at room temperature. The detection was performed using an HRP conjugated compact polymer system. DAB was used as the chromogen. Tissues were counterstained with hematoxylin and mounted with DPX.



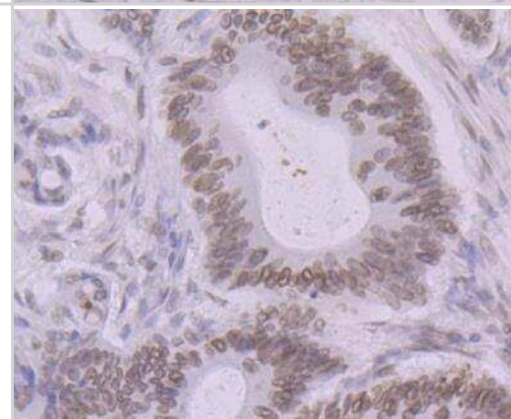
**Flow Cytometry: BANF1 Antibody (JG40-43) [NBP2-76978]** - Flow cytometric analysis of MCF-7 cells with BANF1 antibody at 1/100 dilution (purple) compared with an unlabelled control (cells without incubation with primary antibody; yellow). Alexa Fluor 488-conjugated goat anti-rabbit IgG was used as the secondary antibody.



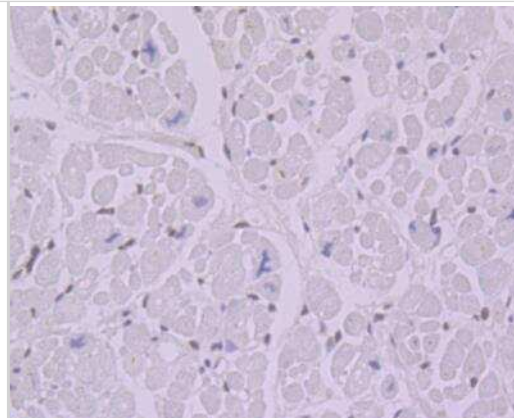
**Immunohistochemistry: BANF1 Antibody (JG40-43) [NBP2-76978]** - Immunohistochemical analysis of paraffin-embedded human thyroid gland tissue using anti-BANF1 antibody. Counter stained with hematoxylin.



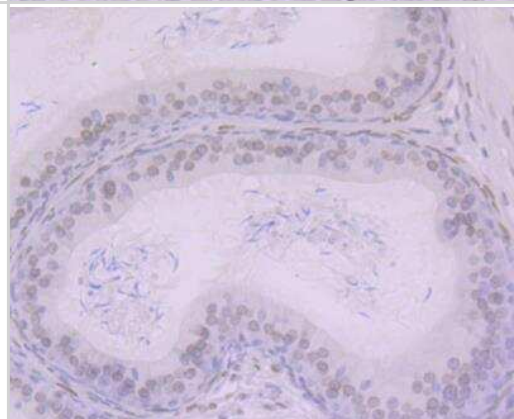
**Immunohistochemistry: BANF1 Antibody (JG40-43) [NBP2-76978]** - Immunohistochemical analysis of paraffin-embedded human colon cancer tissue using anti-BANF1 antibody. Counter stained with hematoxylin.



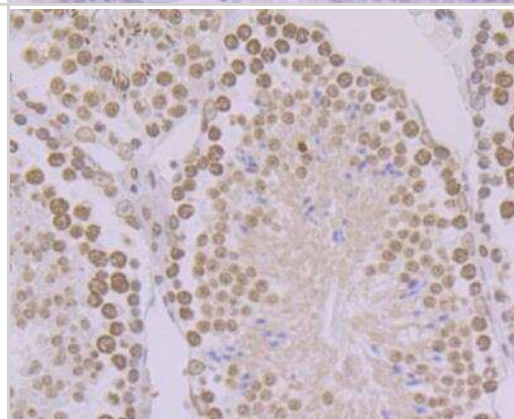
Immunohistochemistry: BANF1 Antibody (JG40-43) [NBP2-76978] - Immunohistochemical analysis of paraffin-embedded human heart tissue using anti-BANF1 antibody. Counter stained with hematoxylin.



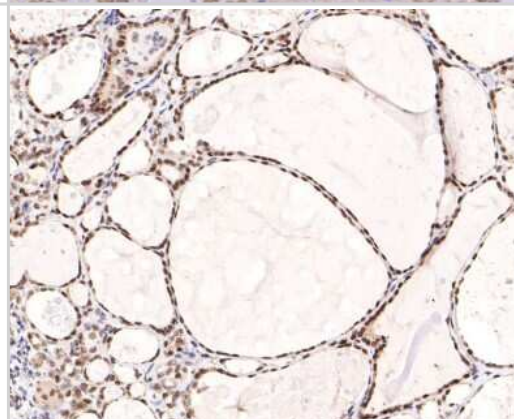
Immunohistochemistry: BANF1 Antibody (JG40-43) [NBP2-76978] - Immunohistochemical analysis of paraffin-embedded rat epididymis tissue using anti-BANF1 antibody. Counter stained with hematoxylin.



Immunohistochemistry: BANF1 Antibody (JG40-43) [NBP2-76978] - Immunohistochemical analysis of paraffin-embedded mouse testis tissue using anti-BANF1 antibody. Counter stained with hematoxylin.

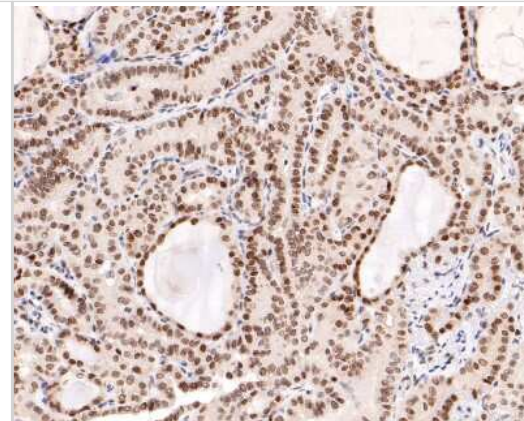


Immunohistochemistry-Paraffin: BANF1 Antibody (JG40-43) [NBP2-76978] - Analysis of paraffin-embedded human thyroid tissue using anti-BANF1 antibody. The section was pre-treated using heat mediated antigen retrieval with Tris-EDTA buffer (pH 9.0) for 20 minutes. The tissues were blocked in 1% BSA for 30 minutes at room temperature, washed with ddH<sub>2</sub>O and PBS, and then probed with the primary antibody (1/400) for 30 minutes at room temperature. The detection was performed using an HRP conjugated compact polymer system. DAB was used as the chromogen. Tissues were counterstained with hematoxylin and mounted with DPX.





Immunohistochemistry-Paraffin: BANF1 Antibody (JG40-43) [NBP2-76978] - Analysis of paraffin-embedded human thyroid carcinoma tissue using anti-BANF1 antibody. The section was pre-treated using heat mediated antigen retrieval with sodium citrate buffer (pH 6.0) for 20 minutes. The tissues were blocked in 1% BSA for 30 minutes at room temperature, washed with ddH<sub>2</sub>O and PBS, and then probed with the primary antibody (1/400) for 30 minutes at room temperature. The detection was performed using an HRP conjugated compact polymer system. DAB was used as the chromogen. Tissues were counterstained with hematoxylin and mounted with DPX.





### **Novus Biologicals USA**

10730 E. Briarwood Avenue  
Centennial, CO 80112  
USA  
Phone: 303.730.1950  
Toll Free: 1.888.506.6887  
Fax: 303.730.1966  
nb-customerservice@bio-techne.com

### **Bio-Techne Canada**

21 Canmotor Ave  
Toronto, ON M8Z 4E6  
Canada  
Phone: 905.827.6400  
Toll Free: 855.668.8722  
Fax: 905.827.6402  
canada.inquires@bio-techne.com

### **Bio-Techne Ltd**

19 Barton Lane  
Abingdon Science Park  
Abingdon, OX14 3NB, United Kingdom  
Phone: (44) (0) 1235 529449  
Free Phone: 0800 37 34 15  
Fax: (44) (0) 1235 533420  
info.EMEA@bio-techne.com

### **General Contact Information**

www.novusbio.com  
Technical Support: nb-technical@bio-  
techne.com  
Orders: nb-customerservice@bio-techne.com  
General: novus@novusbio.com

### **Products Related to NBP2-76978**

---

HAF008	Goat anti-Rabbit IgG Secondary Antibody [HRP]
NB7160	Goat anti-Rabbit IgG (H+L) Secondary Antibody [HRP]
NBP2-24891	Rabbit IgG Isotype Control
H00008815-P01-10ug	Recombinant Human BANF1 GST (N-Term) Protein

---

### **Limitations**

This product is for research use only and is not approved for use in humans or in clinical diagnosis. Primary Antibodies are guaranteed for 1 year from date of receipt.

For more information on our 100% guarantee, please visit [www.novusbio.com/guarantee](http://www.novusbio.com/guarantee)

Earn gift cards/discounts by submitting a review: [www.novusbio.com/reviews/submit/NBP2-76978](http://www.novusbio.com/reviews/submit/NBP2-76978)

Earn gift cards/discounts by submitting a publication using this product:  
[www.novusbio.com/publications](http://www.novusbio.com/publications)

