

Product Datasheet

Recombinant Human PTH Protein NBP2-76813-100ug

Unit Size: 100 ug

Store at -20 to -70C as supplied. After reconstitution, store at 2 to 8C for 1 month and at -20 to -70C for long term storage. Avoid repeated freeze-thaw cycles.

www.novusbio.com



technical@novusbio.com

Protocols, Publications, Related Products, Reviews, Research Tools and Images at:
www.novusbio.com/NBP2-76813

Updated 1/25/2025 v.20.1

Earn rewards for product
reviews and publications.

Submit a publication at www.novusbio.com/publications

Submit a review at www.novusbio.com/reviews/destination/NBP2-76813



NBP2-76813-100ug**Recombinant Human PTH Protein****Product Information**

Unit Size	100 ug
Concentration	Lyoph
Storage	Store at -20 to -70C as supplied. After reconstitution, store at 2 to 8C for 1 month and at -20 to -70C for long term storage. Avoid repeated freeze-thaw cycles.
Preservative	No Preservative
Reconstitution Instructions	Recommended to centrifuge prior to opening. Reconstitute in sterile distilled water or aqueous buffer containing 0.1% BSA to a concentration of 0.1-1.0mg/mL.
Purity	> 97 % pure by SDS-PAGE and HPLC
Buffer	Lyophilized from a 0.2 um filtered concentrated solution in PBS, pH 7.4.
Target Molecular Weight	9.4 kDa

Product Description

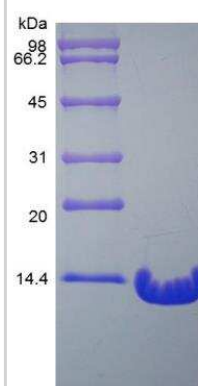
Description	<p>A single non-glycosylated polypeptide chain containing 84 amino acids corresponding to PTH Source: <i>E. coli</i></p> <p>Uniprot ID: P01270</p> <p>Amino Acid Sequence: SVSEIQLMHN LGKHLNSMER VEWLRKKLQD VHNFVALGAP LAPRDAGSQR PRKKEDNVLV ESHEKSLGEA DKADVNVLTAKSQ</p>
Gene ID	5741
Gene Symbol	PTH
Species	Human
Details of Functionality	Parathyroid Hormone Protein is fully biologically active when compared to standard. The ED50 as determined by its ability to induce cAMP accumulation in murine MC3T3E1 cells is less than 50 ng/ml, corresponding to a specific activity of $> 2.0 \times 10^4$ IU/mg.
Endotoxin Note	Less than 1 EU/ug of PTH as determined by LAL method.

Product Application Details

Applications	SDS-Page, Bioactivity
Recommended Dilutions	SDS-Page, Bioactivity

Images

SDS-Page: Recombinant Human PTH Protein [NBP2-76813]





Novus Biologicals USA

10730 E. Briarwood Avenue
Centennial, CO 80112
USA
Phone: 303.730.1950
Toll Free: 1.888.506.6887
Fax: 303.730.1966
nb-customerservice@bio-techne.com

Bio-Techne Canada

21 Canmotor Ave
Toronto, ON M8Z 4E6
Canada
Phone: 905.827.6400
Toll Free: 855.668.8722
Fax: 905.827.6402
canada.inquires@bio-techne.com

Bio-Techne Ltd

19 Barton Lane
Abingdon Science Park
Abingdon, OX14 3NB, United Kingdom
Phone: (44) (0) 1235 529449
Free Phone: 0800 37 34 15
Fax: (44) (0) 1235 533420
info.EMEA@bio-techne.com

General Contact Information

www.novusbio.com
Technical Support: nb-technical@bio-techne.com
Orders: nb-customerservice@bio-techne.com
General: novus@novusbio.com

Products Related to NBP2-76813-100ug

NBP2-35212-100ug	Recombinant Human PTH Protein
M6000B-1	IL-6 [HRP]
MAB7665	PTH Antibody (918462) [Unconjugated]
291-G1-200	IGF-I/IGF-1 [Unconjugated]

Limitations

This product is for research use only and is not approved for use in humans or in clinical diagnosis. Peptides and proteins are guaranteed for 3 months from date of receipt.

For more information on our 100% guarantee, please visit www.novusbio.com/guarantee

Earn gift cards/discounts by submitting a review: www.novusbio.com/reviews/submit/NBP2-76813

Earn gift cards/discounts by submitting a publication using this product:
www.novusbio.com/publications

