

Product Datasheet

Niemann-Pick C1 Antibody (1318A) - BSA Free NBP2-76798

Unit Size: 0.1 mg

Store at 4C short term. Aliquot and store at -20C long term. Avoid freeze-thaw cycles.

www.novusbio.com



technical@novusbio.com

Publications: 1

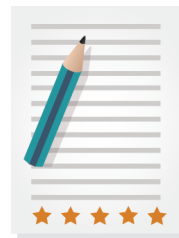
Protocols, Publications, Related Products, Reviews, Research Tools and Images at:
www.novusbio.com/NBP2-76798

Updated 10/23/2024 v.20.1

Earn rewards for product
reviews and publications.

Submit a publication at www.novusbio.com/publications

Submit a review at www.novusbio.com/reviews/destination/NBP2-76798



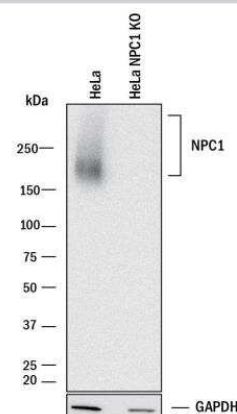
NBP2-76798

Niemann-Pick C1 Antibody (1318A) - BSA Free

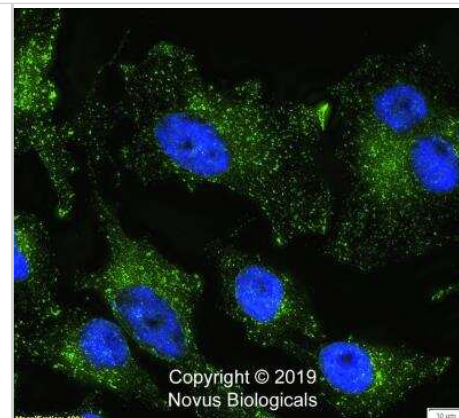
Product Information	
Unit Size	0.1 mg
Concentration	1.0 mg/ml
Storage	Store at 4C short term. Aliquot and store at -20C long term. Avoid freeze-thaw cycles.
Clonality	Monoclonal
Clone	1318A
Preservative	0.02% Sodium Azide
Isotype	IgG
Purity	Protein A or G purified
Buffer	PBS
Product Description	
Host	Rabbit
Gene ID	4864
Gene Symbol	NPC1
Species	Human, Mouse, Rat
Immunogen	A synthetic peptide made to the C-terminal region of human Niemann-Pick C. [UniProt# O15118]
Product Application Details	
Applications	Western Blot, Immunocytochemistry/ Immunofluorescence, Immunohistochemistry, Immunohistochemistry-Paraffin, Knockout Validated
Recommended Dilutions	Western Blot 0.5 - 1.0 ug/ml, Immunohistochemistry 5 - 10 ug/ml, Immunocytochemistry/ Immunofluorescence 2-5 ug/ml, Immunohistochemistry-Paraffin 5 - 10 ug/ml, Knockout Validated

Images

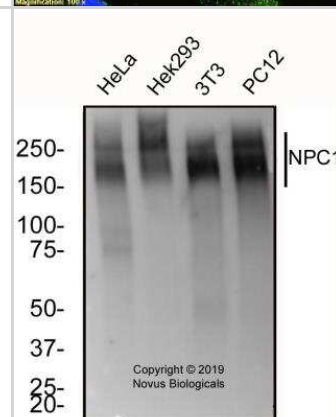
Knockout Validated: Niemann-Pick C1 Antibody (1318A) [NBP2-76798] - Western blot shows lysates of HeLa human cervical epithelial carcinoma parental cell line and Niemann-Pick Type C1/NPC1 knockout HeLa cell line (KO). PVDF membrane was probed with 0.5 ug/mL of Rabbit Anti-Human/Mouse/Rat Niemann-Pick Type C1/NPC1 Monoclonal Antibody (Catalog # MAB10105) followed by HRP-conjugated Anti-Rabbit IgG Secondary Antibody (Catalog # HAF008). A specific band was detected for Niemann-Pick Type C1/NPC1 at approximately 170-250 kDa (as indicated) in the parental HeLa cell line, but is not detectable in knockout HeLa cell line. GAPDH (Catalog # MAB5718) is shown as a loading control. This experiment was conducted under reducing conditions.



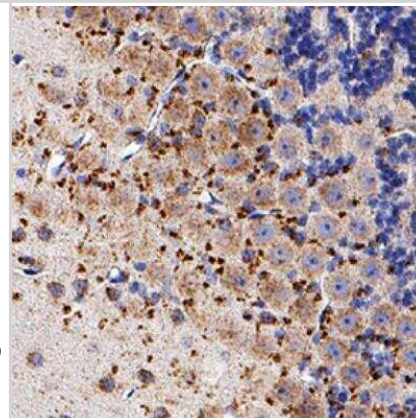
Immunocytochemistry/Immunofluorescence: Niemann-Pick C1 Antibody (1318A) [NBP2-76798] - HeLa cells were fixed in 4% paraformaldehyde for 10 min and permeabilized in 0.05% Triton X-100 for 5 minutes. The cells were incubated with anti- Niemann-Pick C1 Antibody at 2 ug/ml for 60 minutes at room temperature and detected with an anti-rabbit Dylight 488 (Green) at a 1:1000 dilution for 60 minutes. Nuclei were counterstained with DAPI (Blue). Cells were imaged using a 100X objective and digitally deconvolved.



Western Blot: Niemann-Pick C1 Antibody (1318A) [NBP2-76798] - Total protein from human HeLa, Hek293, mouse 3T3 and Rat PC12 cell lines were separated on a 7.5% gel by SDS-PAGE, transferred to PVDF membrane and blocked in 5% non-fat milk in TBST. The membrane was probed with 2.0 ug/ml anti-NPC1 in block buffer and detected with an anti-rabbit HRP secondary antibody using West Pico PLUS chemiluminescence detection reagent.



Immunohistochemistry-Paraffin: Niemann-Pick C1 Antibody (1318A) [NBP2-76798] - Niemann-Pick Type C1/NPC1 was detected in immersion fixed paraffin-embedded sections of human brain (cerebellum) using Rabbit Anti-Human/Mouse/Rat Niemann-Pick Type C1/NPC1 Monoclonal Antibody (NBP2-76798) at 3 ug/mL for 1 hour at room temperature followed by incubation with the Anti-Rabbit IgG VisUCyte™ HRP Polymer Antibody (Catalog # VC003). Before incubation with the primary antibody, tissue was subjected to heat-induced epitope retrieval using Antigen Retrieval Reagent-Basic (Catalog # CTS013). Tissue was stained using DAB (brown) and counterstained with hematoxylin (blue). Specific staining was localized to synaptic puncta.



Immunocytochemistry/Immunofluorescence: Niemann-Pick C1 Antibody (1318A) [NBP2-76798] - HeLa cells were fixed and permeabilized for 10 minutes using -20C MeOH. The cells were incubated with anti-Niemann-Pick C1 Antibody (1318A) at 2 ug/ml overnight at 4C and detected with an anti-rabbit Dylight 488 (Green) at a 1:500 dilution. Alpha tubulin (DM1A) NB100-690 was used as a co-stain at a 1:1000 dilution and detected with an anti-mouse Dylight 550 (Red) at a 1:500 dilution. Nuclei were counterstained with DAPI (Blue). Cells were imaged using a 40X objective.



Publications

Geng F, Zhong Y, Su H et al. SREBP-1 upregulates lipophagy to maintain cholesterol homeostasis in brain tumor cells Cell reports 2023-07-25 [PMID: 37436895] (WB, Human)

Details:
1:30, 000



Novus Biologicals USA

10730 E. Briarwood Avenue
Centennial, CO 80112
USA
Phone: 303.730.1950
Toll Free: 1.888.506.6887
Fax: 303.730.1966
nb-customerservice@bio-techne.com

Bio-Techne Canada

21 Canmotor Ave
Toronto, ON M8Z 4E6
Canada
Phone: 905.827.6400
Toll Free: 855.668.8722
Fax: 905.827.6402
canada.inquires@bio-techne.com

Bio-Techne Ltd

19 Barton Lane
Abingdon Science Park
Abingdon, OX14 3NB, United Kingdom
Phone: (44) (0) 1235 529449
Free Phone: 0800 37 34 15
Fax: (44) (0) 1235 533420
info.EMEA@bio-techne.com

General Contact Information

www.novusbio.com
Technical Support: nb-technical@bio-techne.com
Orders: nb-customerservice@bio-techne.com
General: novus@novusbio.com

Products Related to NBP2-76798

HAF008	Goat anti-Rabbit IgG Secondary Antibody [HRP]
NB7160	Goat anti-Rabbit IgG (H+L) Secondary Antibody [HRP]
NBP2-24891	Rabbit IgG Isotype Control
NB400-148PEP	Niemann-Pick C1 Antibody Blocking Peptide

Limitations

This product is for research use only and is not approved for use in humans or in clinical diagnosis. Primary Antibodies are guaranteed for 1 year from date of receipt.

For more information on our 100% guarantee, please visit www.novusbio.com/guarantee

Earn gift cards/discounts by submitting a review: www.novusbio.com/reviews/submit/NBP2-76798

Earn gift cards/discounts by submitting a publication using this product:
www.novusbio.com/publications

