

Product Datasheet

Cytokeratin, pan Antibody (PAN-CK (Cocktail)) - Azide and BSA Free NBP2-76425

Unit Size: 100 ug

Store at -20 to -80C. Avoid freeze-thaw cycles.

www.novusbio.com



technical@novusbio.com

Protocols, Publications, Related Products, Reviews, Research Tools and Images at:
www.novusbio.com/NBP2-76425

Updated 10/23/2024 v.20.1

Earn rewards for product reviews and publications.

Submit a publication at www.novusbio.com/publications

Submit a review at www.novusbio.com/reviews/destination/NBP2-76425



NBP2-76425

Cytokeratin, pan Antibody (PAN-CK (Cocktail)) - Azide and BSA Free

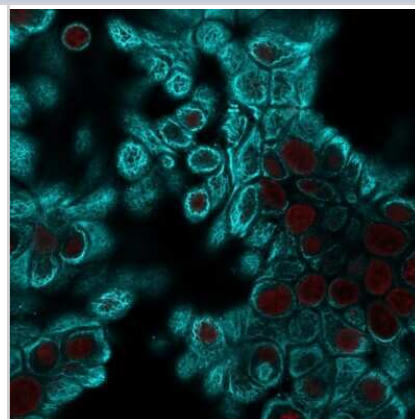
Product Information	
Unit Size	100 ug
Concentration	1.0 mg/ml
Storage	Store at -20 to -80C. Avoid freeze-thaw cycles.
Clonality	Monoclonal
Clone	PAN-CK (Cocktail)
Preservative	No Preservative
Isotype	IgG Kappa
Purity	Protein A or G purified
Buffer	10 mM PBS
Product Description	
Description	<p>1.0 mg/ml of antibody purified from Bioreactor Concentrate by Protein A/G. Prepared in 10mM PBS WITHOUT BSA & azide. Also available at 200 ug/ml WITH BSA & azide (NBP2-44368).</p> <p>Antibody with azide - store at 2 to 8C. Antibody without azide - store at -20 to -80 C.</p>
Host	Mouse
Gene ID	3848
Gene Symbol	KRT1
Species	Human, Mouse, Rat, Bovine, Canine, Chicken, Feline, Monkey, Rabbit
Reactivity Notes	Use in Mouse reported in scientific literature (PMID:34289354)
Marker	Epithelial Marker
Specificity/Sensitivity	<p>Twenty human keratins are resolved with two-dimensional gel electrophoresis into acidic (pI 6.0) subfamilies. This antibody cocktail recognizes acidic (Type I or LMW) and basic (Type II or HMW) cytokeratins, with 67kDa (CK1); 64kDa (CK3); 59kDa (CK4); 58kDa (CK5); 56kDa (CK6); 55kDa (CK7); 52kDa (CK8); 56.5kDa (CK10); 53kDa (CK13); 50kDa (CK14); 50kDa (CK15); 48kDa (CK16); 46kDa (CK17); 45kDa (CK18) and 40kDa (CK19). Many studies have shown the usefulness of keratins as markers in cancer research and tumor diagnosis. KRT-PAN is a broad-spectrum anti pan-cytokeratin antibody cocktail, which differentiates epithelial tumors from non-epithelial tumors e.g. squamous vs. adenocarcinoma of the lung, liver carcinoma, breast cancer, and esophageal cancer. It is useful in characterizing the source of various neoplasms and to study the distribution of cytokeratin containing cells in epithelia during normal development and during the development of epithelial neoplasms. This antibody stains cytokeratins present in normal and abnormal human tissues and shows high sensitivity in the recognition of epithelial cells and carcinomas.</p>
Immunogen	Human epidermal keratins
Product Application Details	
Applications	Western Blot, Flow Cytometry, Immunocytochemistry/ Immunofluorescence, Immunohistochemistry, Immunohistochemistry-Frozen, Immunohistochemistry-Paraffin, CyTOF-ready, Immunofluorescence



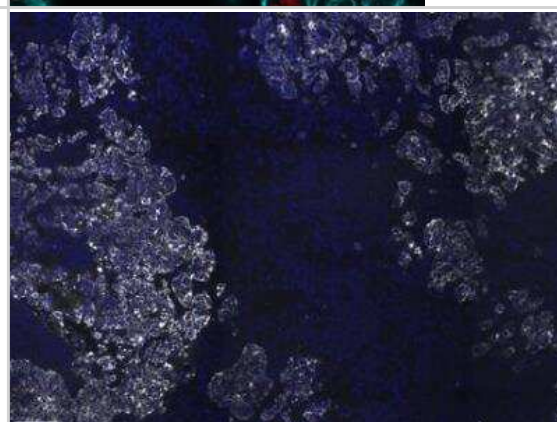
Recommended Dilutions	Western Blot 0.5 - 1.0 ug/ml, Flow Cytometry 0.5 - 1 ug/million cells in 0.1 ml, Immunohistochemistry, Immunocytochemistry/ Immunofluorescence 1-2 ug/ml, Immunohistochemistry-Paraffin 0.5 - 1.0 ug/ml, Immunohistochemistry-Frozen, Immunofluorescence 1 - 2 ug/ml, CyTOF-ready
Application Notes	Immunohistochemistry (Formalin-fixed): 1-2ug/ml for 30 minutes at RT. Staining of formalin-fixed tissues requires heating tissue sections in 10mM Tris with 1mM EDTA, pH 9.0, for 45 min at 95C followed by cooling at RT for 20 minutes. Optimal dilution for a specific application should be determined. Western Blot: 0.5-2ug/ml for 2 hours at RT.

Images

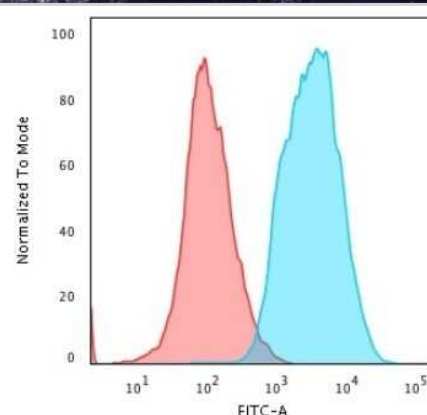
Immunocytochemistry/Immunofluorescence: Cytokeratin, pan Antibody (PAN-CK (Cocktail)) - Azide and BSA Free [NBP2-76425] - Confocal immunofluorescent analysis of HeLa cells using Cytokeratin, panMouse Monoclonal Antibody (PAN-CK) followed by goat anti-mouse IgG-CF488 (cyan). Nuclei are counterstained with NucSpot (red).



Immunohistochemistry-Paraffin: Cytokeratin, pan Antibody (PAN-CK (Cocktail)) - Azide and BSA Free [NBP2-76425] - Human breast cancer tissue stained for panCK (white) and counterstained with DAPI (blue). The Alexa Fluor 750 conjugate of this antibody was used (NBP2-76425AF750). Image from verified customer review.



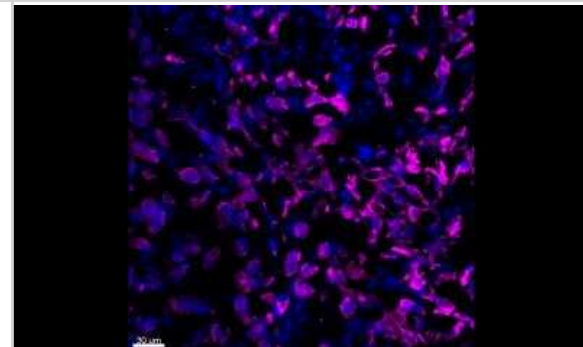
Flow Cytometry: Cytokeratin, pan Antibody (PAN-CK (Cocktail)) - Azide and BSA Free [NBP2-76425] - Flow Cytometric Analysis of human HeLa cells. Cytokeratin, pan Antibody (PAN-CK (Cocktail)). using followed by Goat anti-Mouse IgG-CF488 (Blue); Isotype control (Red).



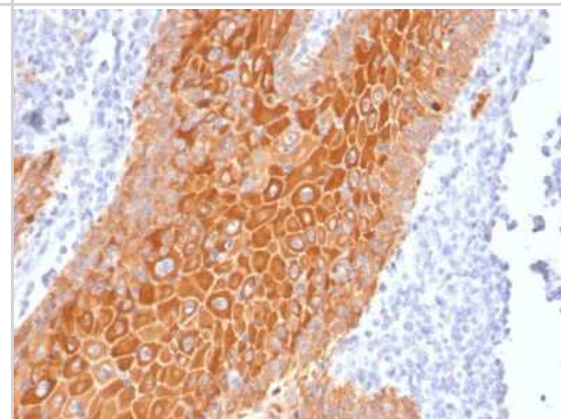
Immunohistochemistry-Paraffin: Cytokeratin, pan Antibody (PAN-CK (Cocktail)) - Azide and BSA Free [NBP2-76425] - FFPE human skin stained with cytokeratin, pan monoclonal antibody cocktail (PAN-CK)



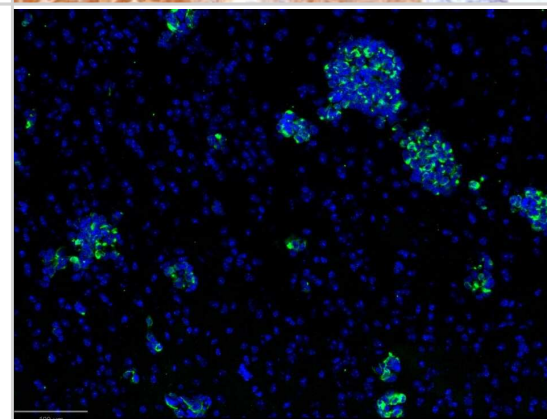
Immunohistochemistry-Frozen: Cytokeratin, pan Antibody (PAN-CK (Cocktail)) - Azide and BSA Free [NBP2-76425] - Human breast cancer tissue stained for panCK (purple) and counterstained with DAPI (blue). The Alexa Fluor 750 conjugate of this antibody was used. IHC-Fr image submitted by a verified customer review.



Immunohistochemistry-Paraffin: Cytokeratin, pan Antibody (PAN-CK (Cocktail)) - Azide and BSA Free [NBP2-76425] - Formalin-fixed, paraffin-embedded human squamous cell carcinoma stained with Cytokeratin, pan Mouse Monoclonal Antibody (PAN-CK).



Immunohistochemistry-Frozen: Mouse Monoclonal Cytokeratin, pan Antibody (PAN-CK (Cocktail)) - Azide and BSA Free [NBP2-76425] - MDA-MB-231 tumor cells (human breast tumor cell line) have been injected intracranially in immunodeficient mouse pups to form tumor. Sections have been stained with Pan-CK-A488 (green) (Catalog # NBP2-76425AF488) and Hoechst (blue). Image from a verified customer review.





Novus Biologicals USA

10730 E. Briarwood Avenue
Centennial, CO 80112
USA
Phone: 303.730.1950
Toll Free: 1.888.506.6887
Fax: 303.730.1966
nb-customerservice@bio-techne.com

Bio-Techne Canada

21 Canmotor Ave
Toronto, ON M8Z 4E6
Canada
Phone: 905.827.6400
Toll Free: 855.668.8722
Fax: 905.827.6402
canada.inquires@bio-techne.com

Bio-Techne Ltd

19 Barton Lane
Abingdon Science Park
Abingdon, OX14 3NB, United Kingdom
Phone: (44) (0) 1235 529449
Free Phone: 0800 37 34 15
Fax: (44) (0) 1235 533420
info.EMEA@bio-techne.com

General Contact Information

www.novusbio.com
Technical Support: nb-technical@bio-techne.com
Orders: nb-customerservice@bio-techne.com
General: novus@novusbio.com

Products Related to NBP2-76425

HAF007	Goat anti-Mouse IgG Secondary Antibody [HRP]
NB720-B	Rabbit anti-Mouse IgG (H+L) Secondary Antibody [Biotin]
DNST0	Endostatin [HRP]
MAB1455	Albumin Antibody (188835) [Unconjugated] - Serum

Limitations

This product is for research use only and is not approved for use in humans or in clinical diagnosis. Primary Antibodies are guaranteed for 1 year from date of receipt.

For more information on our 100% guarantee, please visit www.novusbio.com/guarantee

Earn gift cards/discounts by submitting a review: www.novusbio.com/reviews/submit/NBP2-76425

Earn gift cards/discounts by submitting a publication using this product:
www.novusbio.com/publications

