

Product Datasheet

CD3 epsilon Antibody (BL-298-5D12) NBP2-76424

Unit Size: 100 ul

Store at 2 - 8 C / 1 year from date of receipt

www.novusbio.com



technical@novusbio.com

Protocols, Publications, Related Products, Reviews, Research Tools and Images at:
www.novusbio.com/NBP2-76424

Updated 10/23/2024 v.20.1

Earn rewards for product
reviews and publications.

Submit a publication at www.novusbio.com/publications

Submit a review at www.novusbio.com/reviews/destination/NBP2-76424



NBP2-76424

CD3 epsilon Antibody (BL-298-5D12)

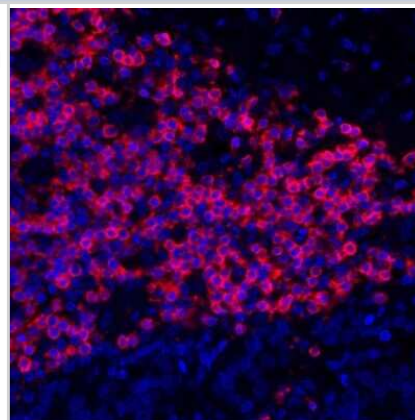
Product Information	
Unit Size	100 ul
Concentration	Please see the vial label for concentration. If unlisted please contact technical services.
Storage	Store at 2 - 8 C / 1 year from date of receipt
Clonality	Monoclonal
Clone	BL-298-5D12
Preservative	0.09% Sodium Azide
Isotype	IgG
Purity	Antigen Affinity-purified
Buffer	Borate Buffered Saline (BBS) pH 8.2 with 0.1% BSA

Product Description	
Host	Rabbit
Gene ID	916
Gene Symbol	CD3E
Species	Human
Immunogen	Immunogen sequence between amino acids 157 and 207
Notes	This Product sold under License from Bethyl Laboratories, Inc.

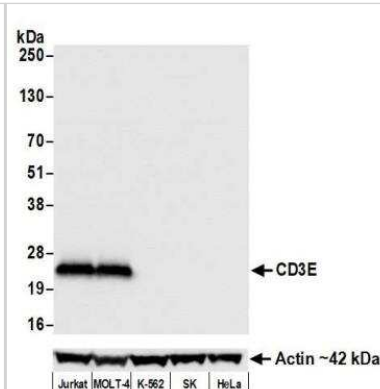
Product Application Details	
Applications	Western Blot, Flow Cytometry, Immunocytochemistry/ Immunofluorescence, Immunohistochemistry, Immunohistochemistry-Paraffin, Immunoprecipitation
Recommended Dilutions	Western Blot 1:1000, Flow Cytometry 1 ul per 1 X 10 ⁶ cells, Immunohistochemistry 1:100 - 1:500, Immunocytochemistry/ Immunofluorescence 1:100 - 1:500, Immunoprecipitation 20 ul/mg lysate, Immunohistochemistry-Paraffin 1:100 - 1:500
Application Notes	Epitope retrieval with citrate buffer pH6.0 is recommended for FFPE cell sections.

Images

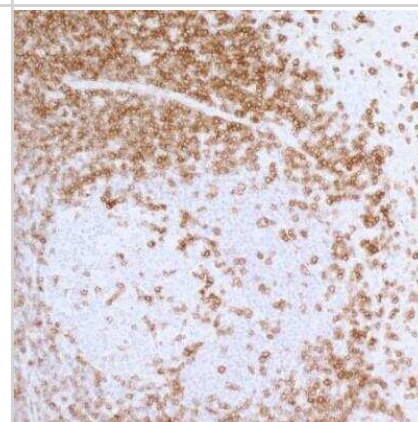
Immunocytochemistry/Immunofluorescence: CD3 epsilon Antibody (BL-298-5D12) [NBP2-76424] - Detection of human CD3E (red) in FFPE lung carcinoma by IHC-IF. Antibody: Rabbit anti-CD3E recombinant monoclonal [BL-298-5D12] (NBP2-76424). Secondary: HRP-conjugated goat anti-rabbit IgG. Substrate: Opal™. Counterstain: DAPI (blue).



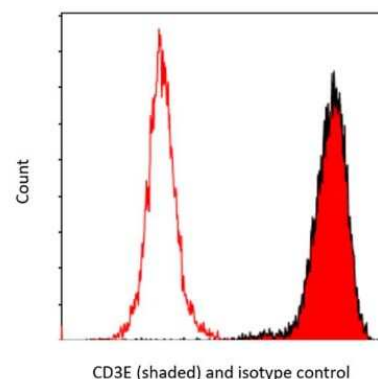
Western Blot: CD3 epsilon Antibody (BL-298-5D12) [NBP2-76424] - Detection of human CD3E by WB of Jurkat, MOLT-4, K-562, SK-MEL-28 (SK), and HeLa lysate Antibody: Rabbit anti-CD3E recombinant monoclonal [BL-298-5D12] (NBP2-76424). Secondary: HRP-conjugated goat anti-rabbit IgG. Lower Panel: Rabbit anti-Actin.



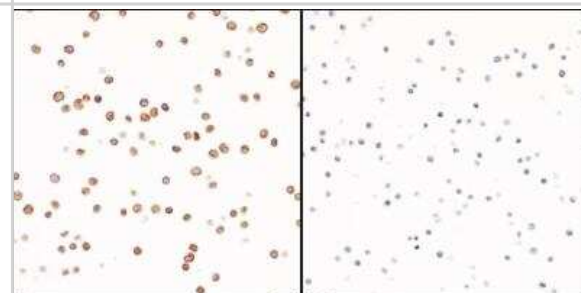
Immunohistochemistry: CD3 epsilon Antibody (BL-298-5D12) [NBP2-76424] - Detection of human CD3E in FFPE tonsil by IHC. Antibody: Rabbit anti-CD3E recombinant monoclonal [BL-298-5D12] (NBP2-76424). Secondary: HRP-conjugated goat anti-rabbit IgG. Substrate: DAB.



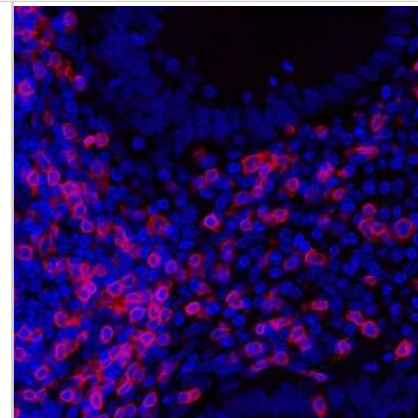
Flow Cytometry: CD3 epsilon Antibody (BL-298-5D12) [NBP2-76424] - Detection of human CD3E in Jurkat cells by flow cytometry. Antibody: Rabbit anti-CD3E recombinant monoclonal [BL-298-5D12] (NBP2-76424) (red shaded) or isotype control (unshaded). Secondary: DyLight® 650-conjugated goat anti-rabbit IgG.



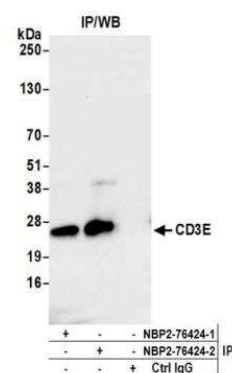
Immunocytochemistry/Immunofluorescence: CD3 epsilon Antibody (BL-298-5D12) [NBP2-76424] - Detection of human CD3E in FFPE MOLT-4 cells (left) and Ramos cells (right) by ICC. Antibody: Rabbit anti-CD3E recombinant monoclonal [BL-298-5D12] (NBP2-76424). Secondary: HRP-conjugated goat anti-rabbit IgG. Substrate: DAB.



Immunocytochemistry/Immunofluorescence: CD3 epsilon Antibody (BL-298-5D12) [NBP2-76424] - Detection of human CD3E (red) in FFPE appendix by IHC-IF. Antibody: Rabbit anti-CD3E recombinant monoclonal [BL-298-5D12] NBP2-76424. Secondary: DyLight® 594-conjugated goat anti-rabbit IgG.



Immunoprecipitation: CD3 epsilon Antibody (BL-298-5D12) [NBP2-76424] - Detection of human CD3E by WB of immunoprecipitates from Jurkat lysate. Antibodies: Rabbit anti-CD3E recombinant monoclonal [BL-298-5D12] (NBP2-76424).





Novus Biologicals USA

10730 E. Briarwood Avenue
Centennial, CO 80112
USA
Phone: 303.730.1950
Toll Free: 1.888.506.6887
Fax: 303.730.1966
nb-customerservice@bio-techne.com

Bio-Techne Canada

21 Canmotor Ave
Toronto, ON M8Z 4E6
Canada
Phone: 905.827.6400
Toll Free: 855.668.8722
Fax: 905.827.6402
canada.inquires@bio-techne.com

Bio-Techne Ltd

19 Barton Lane
Abingdon Science Park
Abingdon, OX14 3NB, United Kingdom
Phone: (44) (0) 1235 529449
Free Phone: 0800 37 34 15
Fax: (44) (0) 1235 533420
info.EMEA@bio-techne.com

General Contact Information

www.novusbio.com
Technical Support: nb-technical@bio-techne.com
Orders: nb-customerservice@bio-techne.com
General: novus@novusbio.com

Products Related to NBP2-76424

HAF008	Goat anti-Rabbit IgG Secondary Antibody [HRP]
NB7160	Goat anti-Rabbit IgG (H+L) Secondary Antibody [HRP]
NBP2-24891	Rabbit IgG Isotype Control
NBP2-22752	Recombinant Human CD3 epsilon His Protein

Limitations

This product is for research use only and is not approved for use in humans or in clinical diagnosis. Primary Antibodies are guaranteed for 1 year from date of receipt.

For more information on our 100% guarantee, please visit www.novusbio.com/guarantee

Earn gift cards/discounts by submitting a review: www.novusbio.com/reviews/submit/NBP2-76424

Earn gift cards/discounts by submitting a publication using this product:
www.novusbio.com/publications

