

# Product Datasheet

## KAP1 Antibody (BL-248-2G6) NBP2-76411

Unit Size: 100 ul

Store at 2 - 8 C / 1 year from date of receipt

[www.novusbio.com](http://www.novusbio.com)



[technical@novusbio.com](mailto:technical@novusbio.com)

Protocols, Publications, Related Products, Reviews, Research Tools and Images at:  
[www.novusbio.com/NBP2-76411](http://www.novusbio.com/NBP2-76411)

Updated 9/9/2025 v.20.1

Earn rewards for product  
reviews and publications.

Submit a publication at [www.novusbio.com/publications](http://www.novusbio.com/publications)

Submit a review at [www.novusbio.com/reviews/destination/NBP2-76411](http://www.novusbio.com/reviews/destination/NBP2-76411)



**NBP2-76411**

KAP1 Antibody (BL-248-2G6)

Product Information	
Unit Size	100 ul
Concentration	Please see the vial label for concentration. If unlisted please contact technical services.
Storage	Store at 2 - 8 C / 1 year from date of receipt
Clonality	Monoclonal
Clone	BL-248-2G6
Preservative	0.09% Sodium Azide
Isotype	IgG
Purity	Antigen Affinity-purified
Buffer	Borate Buffered Saline (BBS) pH 8.2 with 0.1% BSA
Product Description	
Description	Novus Biologicals Rabbit KAP1 Antibody (BL-248-2G6) (NBP2-76411) is a recombinant monoclonal antibody validated for use in IHC, WB, Flow, ICC/IF and IP. All Novus Biologicals antibodies are covered by our 100% guarantee.
Host	Rabbit
Gene ID	10155
Gene Symbol	TRIM28
Species	Human, Mouse
Immunogen	Surrounding serine 824
Notes	This Product sold under License from Bethyl Laboratories, Inc.
Product Application Details	
Applications	Western Blot, Flow Cytometry, Immunocytochemistry/ Immunofluorescence, Immunohistochemistry, Immunoprecipitation
Recommended Dilutions	Western Blot 1:1000, Flow Cytometry 1 µl per 1 X 10 <sup>6</sup> cells, Immunohistochemistry 1:100 - 1:500, Immunocytochemistry/ Immunofluorescence 1:100 - 1:500, Immunoprecipitation 20 ul/mg lysate
Application Notes	Epitope retrieval with citrate buffer pH6.0 is recommended for FFPE cell sections.

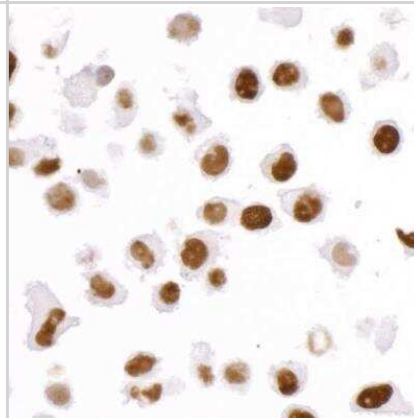


## Images

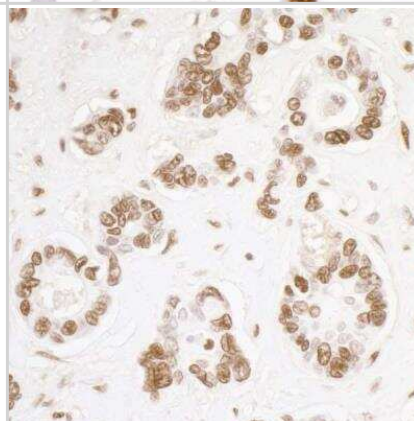
**Western Blot: KAP1 Antibody (BL-248-2G6) [NBP2-76411] - Detection of human and mouse KAP-1 by WB of HeLa, HEK293T, MCF-7, Hep-G2, A-549, SW620, SK-MEL-28 (SK), Jurkat, TCMK-1, NIH 3T3, and CT26 lysate. Antibody: Rabbit anti-KAP-1 recombinant monoclonal [BL-248-2G6] (NBP2-76411). Secondary: HRP-conjugated goat anti-rabbit IgG.**



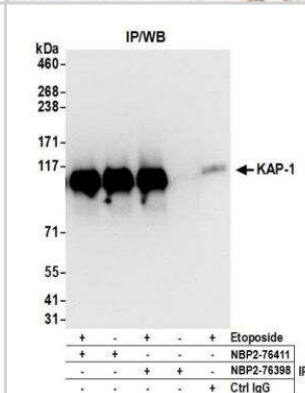
**Immunocytochemistry: KAP1 Antibody (BL-248-2G6) [NBP2-76411] - Detection of human KAP-1 in FFPE HeLa cells by ICC. Antibody: Rabbit anti-KAP-1 recombinant monoclonal [BL-248-2G6] (NBP2-76411). Secondary: HRP-conjugated goat anti-rabbit IgG. Substrate: DAB.**



**Immunohistochemistry: KAP1 Antibody (BL-248-2G6) [NBP2-76411] - Detection of human KAP-1 in FFPE ovarian carcinoma by IHC. Antibody: Rabbit anti-KAP-1 recombinant monoclonal [BL-248-2G6] (NBP2-76411). Secondary: HRP-conjugated goat anti-rabbit IgG. Substrate: DAB.**



**Immunoprecipitation: KAP1 Antibody (BL-248-2G6) [NBP2-76411] - Detection of human KAP-1 by WB of immunoprecipitates from HEK293T lysate treated with 100 uM EPE (+) or mock treated (-). Antibodies: Rabbit anti-KAP-1 recombinant monoclonal [BL-248-2G6] (NBP2-76411) and rabbit anti-Phospho KAP-1 (S824) recombinant monoclonal [BL-246-7B5] (NBP2-76398).**





### **Novus Biologicals USA**

10730 E. Briarwood Avenue  
Centennial, CO 80112  
USA  
Phone: 303.730.1950  
Toll Free: 1.888.506.6887  
Fax: 303.730.1966  
nb-customerservice@bio-techne.com

### **Bio-Techne Canada**

21 Canmotor Ave  
Toronto, ON M8Z 4E6  
Canada  
Phone: 905.827.6400  
Toll Free: 855.668.8722  
Fax: 905.827.6402  
canada.inquires@bio-techne.com

### **Bio-Techne Ltd**

19 Barton Lane  
Abingdon Science Park  
Abingdon, OX14 3NB, United Kingdom  
Phone: (44) (0) 1235 529449  
Free Phone: 0800 37 34 15  
Fax: (44) (0) 1235 533420  
info.EMEA@bio-techne.com

### **General Contact Information**

www.novusbio.com  
Technical Support: nb-technical@bio-techne.com  
Orders: nb-customerservice@bio-techne.com  
General: novus@novusbio.com

### **Products Related to NBP2-76411**

---

HAF008	Goat anti-Rabbit IgG Secondary Antibody [HRP]
NB7160	Goat anti-Rabbit IgG (H+L) Secondary Antibody [HRP]
NBP2-24891	Rabbit IgG Isotype Control
NBP2-22889	Recombinant Human KAP1 His Protein

---

### **Limitations**

This product is for research use only and is not approved for use in humans or in clinical diagnosis. Primary Antibodies are guaranteed for 1 year from date of receipt.

For more information on our 100% guarantee, please visit [www.novusbio.com/guarantee](http://www.novusbio.com/guarantee)

Earn gift cards/discounts by submitting a review: [www.novusbio.com/reviews/submit/NBP2-76411](http://www.novusbio.com/reviews/submit/NBP2-76411)

Earn gift cards/discounts by submitting a publication using this product:  
[www.novusbio.com/publications](http://www.novusbio.com/publications)

