

Product Datasheet

KAP1 [p Ser824] Antibody (BL-246-7B5) NBP2-76398

Unit Size: 100 ul

Store at 2 - 8 C / 1 year from date of receipt

www.novusbio.com



technical@novusbio.com

Protocols, Publications, Related Products, Reviews, Research Tools and Images at:
www.novusbio.com/NBP2-76398

Updated 4/13/2025 v.20.1

Earn rewards for product
reviews and publications.

Submit a publication at www.novusbio.com/publications

Submit a review at www.novusbio.com/reviews/destination/NBP2-76398



NBP2-76398

KAP1 [p Ser824] Antibody (BL-246-7B5)

Product Information

Unit Size	100 ul
Concentration	Please see the vial label for concentration. If unlisted please contact technical services.
Storage	Store at 2 - 8 C / 1 year from date of receipt
Clonality	Monoclonal
Clone	BL-246-7B5
Preservative	0.09% Sodium Azide
Isotype	IgG
Purity	Antigen Affinity-purified
Buffer	Borate Buffered Saline (BBS) pH 8.2 with 0.1% BSA

Product Description

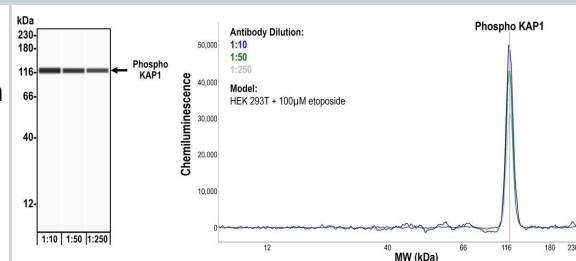
Host	Rabbit
Gene ID	10155
Gene Symbol	TRIM28
Species	Human, Mouse
Immunogen	Immunogen was a synthetic phosphorylated peptide, which represented a portion of human KRAB-Associated Protein 1 surrounding Serine 824 according to the numbering given in entry NP_005753.1 (GeneID 10155)
Notes	This Product sold under License from Bethyl Laboratories, Inc.

Product Application Details

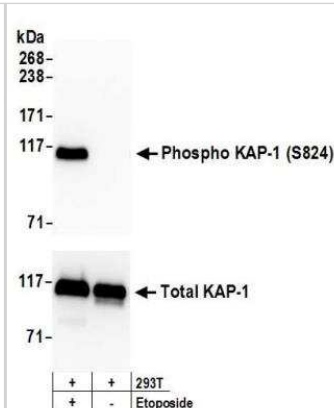
Applications	Western Blot, Simple Western, Flow Cytometry, Immunocytochemistry/Immunofluorescence, Immunohistochemistry, Immunohistochemistry-Paraffin, Immunoprecipitation
Recommended Dilutions	Western Blot 1:1000, Simple Western 1:10 - 1:250, Flow Cytometry Fixed in 4% formaldehyde and permeabilized with 90% methanol. 1 ul, Immunohistochemistry 1:100 - 1:500, Immunocytochemistry/Immunofluorescence 1:100 - 1:500, Immunoprecipitation 20 ul/mg lysate, Immunohistochemistry-Paraffin 1:100 - 1:500
Application Notes	Epitope retrieval with citrate buffer pH 6.0 is recommended for FFPE tissue sections.

Images

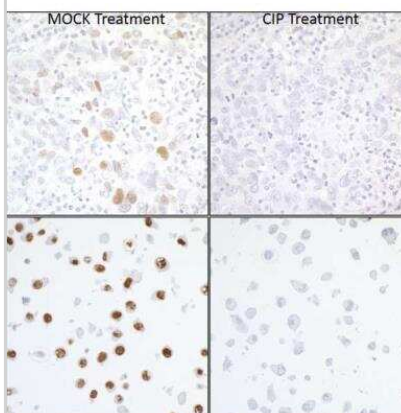
Simple Western: KAP1 [p Ser824] Antibody (BL-246-7B5) [NBP2-76398] - Detection of human Phospho KAP-1 (S824) by Simple Western™. Samples: Whole cell lysate (0.4 mg/mL) from HEK293T cells treated with 100 μ M etoposide prepared using NETN lysis buffer. Antibody: Rabbit anti-Phospho KAP-1 (S824) recombinant monoclonal antibody [BL-246-7B5] (NBP2-76398) used at 1:10, 1:50, and 1:250. Separation and Detection: SallySue ProteinSimple instrument with the 12-230 kDa separation module and anti-Rabbit detection module. Left Panel: Virtual Lane View. Right Panel: Electropherogram. Image validated internally.



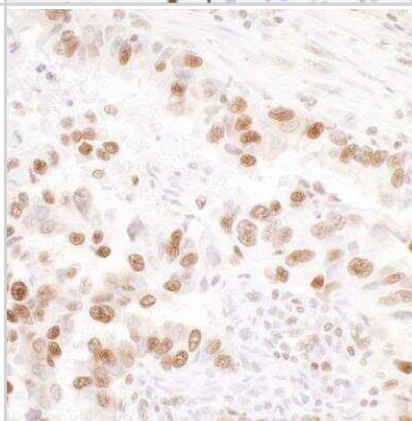
Western Blot: KAP1 [p Ser824] Antibody (BL-246-7B5) [NBP2-76398] - Detection of human Phospho KAP-1 (S824) by WB of HEK293T lysate treated with 100 uM EPE (+) or mock treated (-). Antibodies: Rabbit anti-Phospho KAP-1 (S824) recombinant monoclonal [BL-246-7B5] (NBP2-76398). Lower panel shows WB for total KAP-1 using rabbit anti-KAP-1 recombinant monoclonal [BL-248-2G6] (NBP2-76398). Secondary: HRP-conjugated goat anti-rabbit IgG.



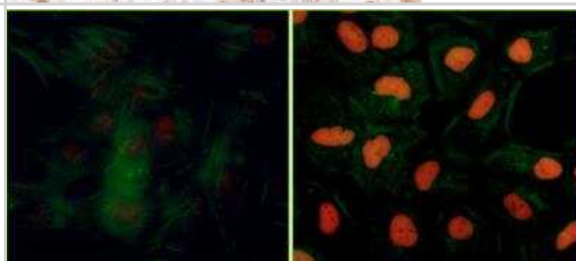
Immunocytochemistry/Immunofluorescence: KAP1 [p Ser824] Antibody (BL-246-7B5) [NBP2-76398] - Detection of human Phospho KAP1 (S824) in FFPE breast carcinoma by IHC and in FFPE EPE treated HeLa cells by ICC. Mock phosphatase treated sections (left) and calf intestinal phosphatase-treated sections (right). Antibody: Rabbit anti-Phospho KAP-1 (S824) recombinant monoclonal [BL-246-7B5] (NBP2-76398). Secondary: HRP-conjugated goat anti-rabbit IgG. Substrate: DAB.



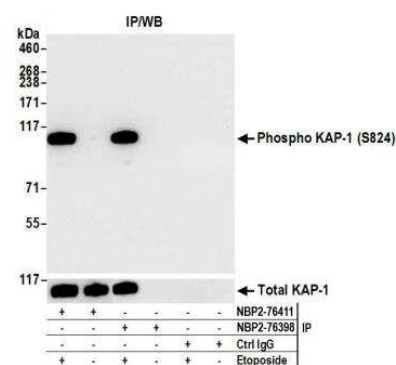
Immunohistochemistry: KAP1 [p Ser824] Antibody (BL-246-7B5) [NBP2-76398] - Detection of human Phospho KAP-1 (S824) in FFPE lung carcinoma by IHC. Antibody: Rabbit anti-Phospho KAP-1 (S824) recombinant monoclonal [BL-246-7B5] (NBP2-76398). Secondary: HRP-conjugated goat anti-rabbit IgG. Substrate: DAB.



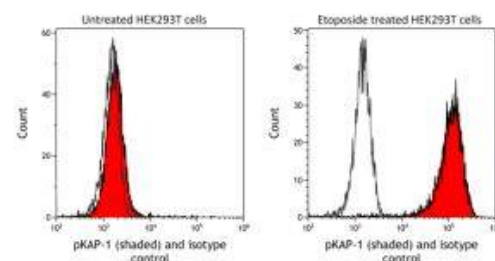
Immunocytochemistry/Immunofluorescence: KAP1 [p Ser824] Antibody (BL-246-7B5) [NBP2-76398] - Detection of human Phospho KAP-1 (S824) (red) in formaldehyde-fixed asynchronous HeLa cells treated with EPE (right) or untreated (left) by ICC-IF. Antibody: Rabbit anti-Phospho KAP-1 (S824) recombinant monoclonal [BL-246-7B5] (NBP2-76398). Secondary: DyLight 594-conjugated goat anti-rabbit IgG. Counterstain: Phalloidin conjugated Alexafluor 488 (green).



Immunoprecipitation: KAP1 [p Ser824] Antibody (BL-246-7B5) [NBP2-76398] - Detection of human Phospho KAP-1 (S824) by WB of immunoprecipitates from HEK293T lysate treated with 100 uM EPE (+) or mock treated (-). Antibodies: Rabbit anti-Phospho KAP-1 (S824) recombinant monoclonal [BL-246-7B5] (NBP2-76398) and rabbit anti-KAP-1 recombinant monoclonal [BL-248-2G6] (NBP2-76411).



Flow Cytometry- KAP1 [p Ser824] Antibody (BL-246-7B5) [NBP2-76398]
 - Antibody: Rabbit anti-phospho KAP-1 recombinant monoclonal [BL-246-7B5] or isotype control (unshaded). Secondary: DyLight® 488-conjugated goat anti-rabbit IgG





Novus Biologicals USA

10730 E. Briarwood Avenue
Centennial, CO 80112
USA
Phone: 303.730.1950
Toll Free: 1.888.506.6887
Fax: 303.730.1966
nb-customerservice@bio-techne.com

Bio-Techne Canada

21 Canmotor Ave
Toronto, ON M8Z 4E6
Canada
Phone: 905.827.6400
Toll Free: 855.668.8722
Fax: 905.827.6402
canada.inquires@bio-techne.com

Bio-Techne Ltd

19 Barton Lane
Abingdon Science Park
Abingdon, OX14 3NB, United Kingdom
Phone: (44) (0) 1235 529449
Free Phone: 0800 37 34 15
Fax: (44) (0) 1235 533420
info.EMEA@bio-techne.com

General Contact Information

www.novusbio.com
Technical Support: nb-technical@bio-techne.com
Orders: nb-customerservice@bio-techne.com
General: novus@novusbio.com

Products Related to NBP2-76398

HAF008	Goat anti-Rabbit IgG Secondary Antibody [HRP]
NB7160	Goat anti-Rabbit IgG (H+L) Secondary Antibody [HRP]
NBP2-24891	Rabbit IgG Isotype Control
NBP2-22889	Recombinant Human KAP1 His Protein

Limitations

This product is for research use only and is not approved for use in humans or in clinical diagnosis. Primary Antibodies are guaranteed for 1 year from date of receipt.

For more information on our 100% guarantee, please visit www.novusbio.com/guarantee

Earn gift cards/discounts by submitting a review: www.novusbio.com/reviews/submit/NBP2-76398

Earn gift cards/discounts by submitting a publication using this product:
www.novusbio.com/publications

