

Product Datasheet

TET1 Antibody - BSA Free NBP2-76345

Unit Size: 100 uL

Aliquot and store at -20C or -80C. Avoid freeze-thaw cycles.

www.novusbio.com



technical@novusbio.com

Protocols, Publications, Related Products, Reviews, Research Tools and Images at:
www.novusbio.com/NBP2-76345

Updated 9/9/2025 v.20.1

Earn rewards for product
reviews and publications.

Submit a publication at www.novusbio.com/publications

Submit a review at www.novusbio.com/reviews/destination/NBP2-76345



NBP2-76345

TET1 Antibody - BSA Free

Product Information

Unit Size	100 uL
Concentration	Concentrations vary lot to lot. See vial label for concentration. If unlisted please contact technical services.
Storage	Aliquot and store at -20C or -80C. Avoid freeze-thaw cycles.
Clonality	Polyclonal
Preservative	0.025% Proclin 300
Isotype	IgG
Purity	Antigen Affinity-purified
Buffer	PBS (pH 7), 20% Glycerol
Target Molecular Weight	235 kDa

Product Description

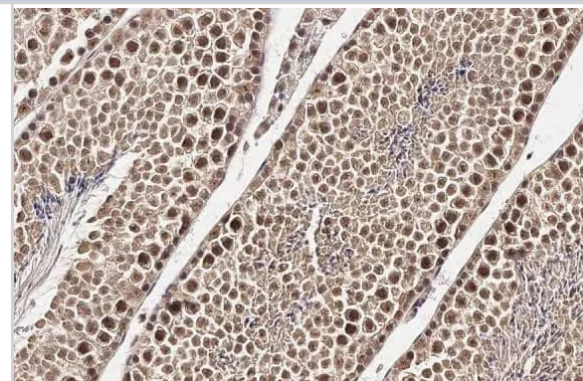
Description	Novus Biologicals Rabbit TET1 Antibody - BSA Free (NBP2-76345) is a polyclonal antibody validated for use in IHC, WB, ICC/IF, IP and ChIP. All Novus Biologicals antibodies are covered by our 100% guarantee.
Host	Rabbit
Gene ID	80312
Gene Symbol	TET1
Species	Human, Mouse, Monkey
Immunogen	Recombinant protein encompassing a sequence within the center region of human TET1. The exact sequence is proprietary.

Product Application Details

Applications	Western Blot, Immunohistochemistry-Paraffin, Immunocytochemistry/Immunofluorescence, Immunohistochemistry, Immunoprecipitation, Chromatin Immunoprecipitation (ChIP)
Recommended Dilutions	Western Blot 1:500-1:3000, Immunohistochemistry, Immunocytochemistry/Immunofluorescence 1:100-1:1000, Immunoprecipitation, Immunohistochemistry-Paraffin 1:100-1:1000, Chromatin Immunoprecipitation (ChIP)

Images

Immunohistochemistry-Paraffin: TET1 Antibody [NBP2-76345] - TET1 antibody [N3C1] detects TET1 protein at nucleus by immunohistochemical analysis. Sample: Paraffin-embedded mouse testis. TET1 stained by TET1 antibody [N3C1] (NBP2-76345) diluted at 1:500. Antigen Retrieval: Citrate buffer, pH 6.0, 15 min

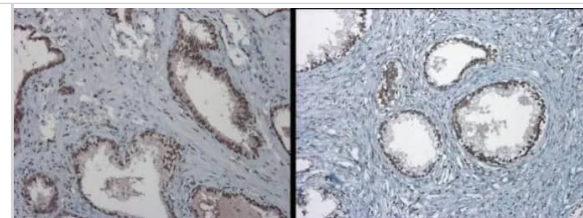


Immunohistochemistry: TET1 Antibody [NBP2-76345] - TET1 antibody [N3C1] detects TET1 protein at nucleus on Human normal prostate tissue by immunohistochemical analysis.

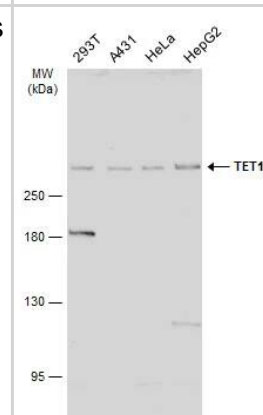
Sample: Paraffin-embedded Human normal prostate tissue.

TET1 antibody [N3C1] (NBP2-76345) dilution: 1:1000.

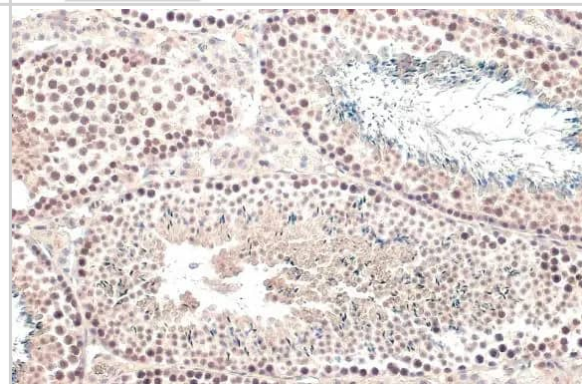
Antigen Retrieval: Trilogy™ (EDTA based, pH 8.0) buffer, 15min



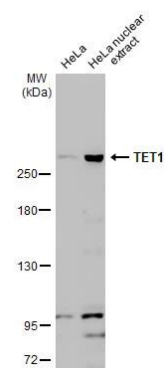
Western Blot: TET1 Antibody [NBP2-76345] - Various whole cell extracts (30 ug) were separated by 5% SDS-PAGE, and the membrane was blotted with TET1 antibody [N3C1] (NBP2-76345) diluted at 1:2000. The HRP-conjugated anti-rabbit IgG antibody was used to detect the primary antibody.



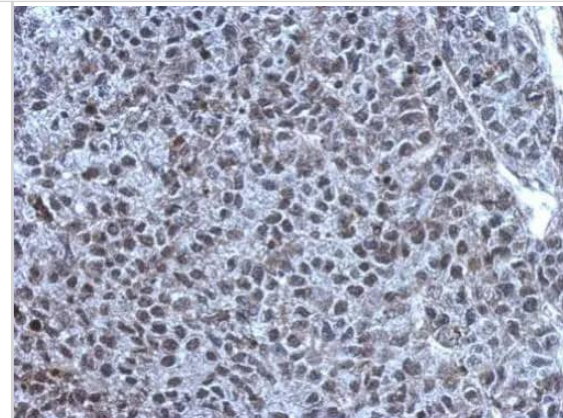
Immunohistochemistry-Paraffin: TET1 Antibody [NBP2-76345] - TET1 antibody [N3C1] detects TET1 protein at nucleus by immunohistochemical analysis. Sample: Paraffin-embedded mouse testis. TET1 stained by TET1 antibody [N3C1] (NBP2-76345) diluted at 1:500. Antigen Retrieval: Citrate buffer, pH 6.0, 15 min



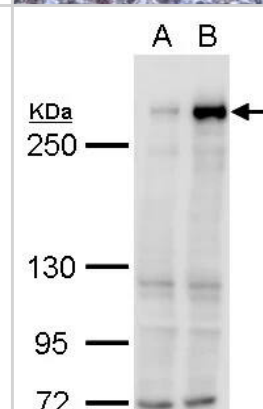
Western Blot: TET1 Antibody [NBP2-76345] - HeLa whole cell and nuclear extracts (30 ug) were separated by 5% SDS-PAGE, and the membrane was blotted with TET1 antibody [N3C1] (NBP2-76345) diluted at 1:1000. The HRP-conjugated anti-rabbit IgG antibody was used to detect the primary antibody.



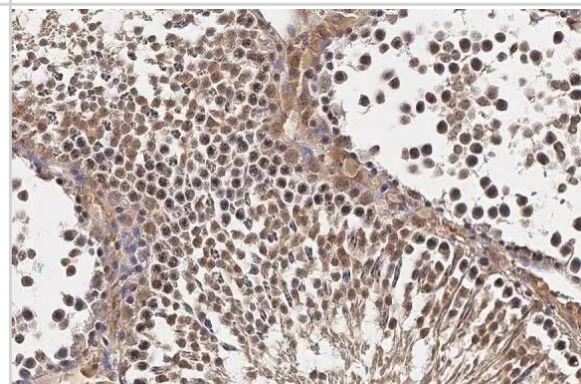
Immunohistochemistry: TET1 Antibody [NBP2-76345] - Immunohistochemical analysis of paraffin-embedded Hela xenograft, using TET1 (NBP2-76345) antibody at 1:1000 dilution.
Antigen Retrieval: Trilogy™ (EDTA based, pH 8.0) buffer, 15min



Western Blot: TET1 Antibody [NBP2-76345] - TET1 antibody [N3C1] detects TET1 protein by western blot analysis.
A. 30 ug 293T whole cell lysate/extract
B. 30 ug whole cell lysate/extract of DDDDK-human TET1-transfected 293T cells
5% SDS-PAGE
TET1 antibody [N3C1] (NBP2-76345) dilution: 1:5000
The HRP-conjugated anti-rabbit IgG antibody was used to detect the primary antibody.

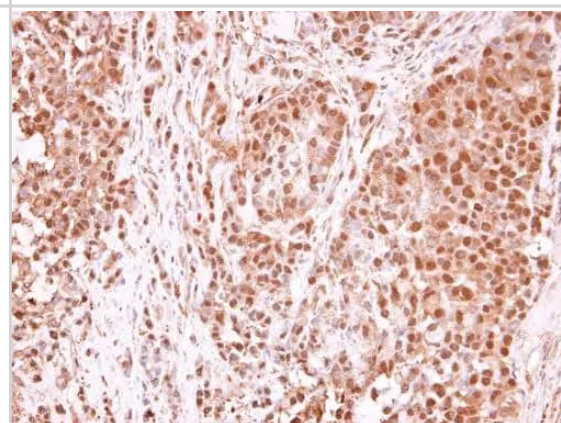


Immunohistochemistry-Paraffin: TET1 Antibody [NBP2-76345] - TET1 antibody [N3C1] detects TET1 protein at nucleus by immunohistochemical analysis. Sample: Paraffin-embedded rat testis. TET1 stained by TET1 antibody [N3C1] (NBP2-76345) diluted at 1:500. Antigen Retrieval: Citrate buffer, pH 6.0, 15 min

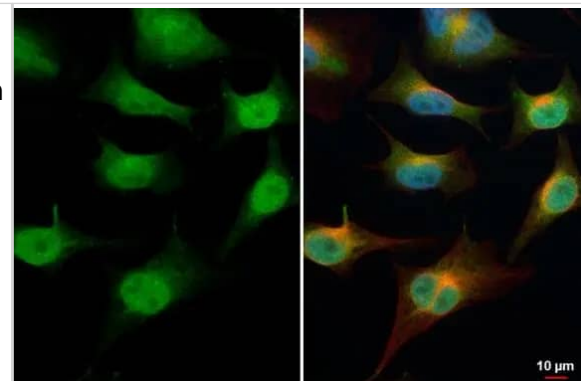


Immunohistochemistry-Paraffin: TET1 Antibody [NBP2-76345] - TET1 antibody [N3C1] detects TET1 protein at nucleus in human A549 xenograft by immunohistochemical analysis.
Sample: Paraffin-embedded human A549 xenograft .
TET1 antibody [N3C1] (NBP2-76345) diluted at 1:250.

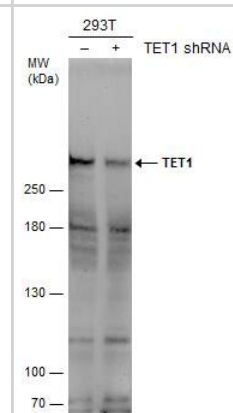
Antigen Retrieval: Trilogy™ (EDTA based, pH 8.0) buffer, 15min



Immunocytochemistry/ Immunofluorescence: TET1 Antibody [NBP2-76345] - TET1 antibody [N3C1] detects TET1 protein at cytoplasm and nucleus by immunofluorescent analysis. Sample: HeLa cells were fixed in 4% paraformaldehyde at RT for 15 min. Green: TET1 stained by TET1 antibody [N3C1] (NBP2-76345) diluted at 1:500. Red: alpha Tubulin, a cytoskeleton marker, stained by alpha Tubulin antibody [GT114] diluted at 1:1000. Blue: Fluoroshield with DAPI .



Western Blot: TET1 Antibody [NBP2-76345] - Non-transfected (–) and transfected (+) 293T whole cell extracts (50 ug) were separated by 5% SDS-PAGE, and the membrane was blotted with TET1 antibody [N3C1] diluted at 1:1000. The HRP-conjugated anti-rabbit IgG antibody was used to detect the primary antibody.





Novus Biologicals USA

10730 E. Briarwood Avenue
Centennial, CO 80112
USA
Phone: 303.730.1950
Toll Free: 1.888.506.6887
Fax: 303.730.1966
nb-customerservice@bio-techne.com

Bio-Techne Canada

21 Canmotor Ave
Toronto, ON M8Z 4E6
Canada
Phone: 905.827.6400
Toll Free: 855.668.8722
Fax: 905.827.6402
canada.inquires@bio-techne.com

Bio-Techne Ltd

19 Barton Lane
Abingdon Science Park
Abingdon, OX14 3NB, United Kingdom
Phone: (44) (0) 1235 529449
Free Phone: 0800 37 34 15
Fax: (44) (0) 1235 533420
info.EMEA@bio-techne.com

General Contact Information

www.novusbio.com
Technical Support: nb-technical@bio-techne.com
Orders: nb-customerservice@bio-techne.com
General: novus@novusbio.com

Products Related to NBP2-76345

HAF008	Goat anti-Rabbit IgG Secondary Antibody [HRP]
NB7160	Goat anti-Rabbit IgG (H+L) Secondary Antibody [HRP]
NBP2-24891	Rabbit IgG Isotype Control
NBP1-78965PEP	TET1 Antibody Blocking Peptide

Limitations

This product is for research use only and is not approved for use in humans or in clinical diagnosis. Primary Antibodies are guaranteed for 1 year from date of receipt.

For more information on our 100% guarantee, please visit www.novusbio.com/guarantee

Earn gift cards/discounts by submitting a review: www.novusbio.com/reviews/submit/NBP2-76345

Earn gift cards/discounts by submitting a publication using this product:
www.novusbio.com/publications

