

Product Datasheet

Siglec-3/CD33 Antibody (hP67.6 (Gemtuzumab)) - Chimeric - Azide and BSA Free NBP2-75906-0.2mg

Unit Size: 0.2 mg

Store at 4C for up to 3 months. For longer storage, aliquot and store at -20C.

www.novusbio.com



technical@novusbio.com

Protocols, Publications, Related Products, Reviews, Research Tools and Images at:
www.novusbio.com/NBP2-75906

Updated 2/24/2026 v.20.1

Earn rewards for product
reviews and publications.

Submit a publication at www.novusbio.com/publications

Submit a review at www.novusbio.com/reviews/destination/NBP2-75906



NBP2-75906-0.2mg

Siglec-3/CD33 Antibody (hP67.6 (Gemtuzumab)) - Chimeric - Azide and BSA Free

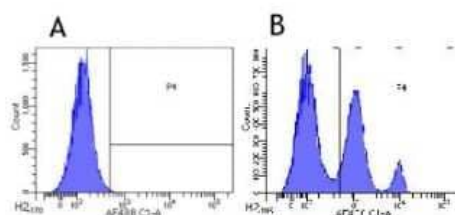
Product Information	
Unit Size	0.2 mg
Concentration	1 mg/ml
Storage	Store at 4C for up to 3 months. For longer storage, aliquot and store at -20C.
Clonality	Monoclonal
Clone	hP67.6 (Gemtuzumab)
Preservative	0.02% Proclin 300
Isotype	IgG Kappa
Purity	Protein A purified
Buffer	PBS

Product Description	
Description	Novus Biologicals Rabbit Siglec-3/CD33 Antibody (hP67.6 (Gemtuzumab)) - Chimeric - Azide and BSA Free (NBP2-75906) is a recombinant monoclonal antibody validated for use in Flow and ICC/IF. All Novus Biologicals antibodies are covered by our 100% guarantee.
Host	Rabbit
Gene ID	945
Gene Symbol	CD33
Species	Human
Specificity/Sensitivity	Recognises human CD33.
Immunogen	Gemtuzumab was generated by humanization of the murine P67.6 clone, raised against CD33-transfected FMY9S5 cells of human origin. CD33 is a transmembrane receptor expressed on predominantly on cells of the myeloid lineage, but it can also be found on some lymphoid cells.

Product Application Details	
Applications	Flow Cytometry, Immunocytochemistry/ Immunofluorescence
Recommended Dilutions	Flow Cytometry, Immunocytochemistry/ Immunofluorescence
Application Notes	This chimeric rabbit antibody was made using the variable domain sequences of the original Human IgG4 format, for improved compatibility with existing reagents, assays and techniques.

Images

Flow Cytometry: Siglec-3/CD33 Antibody (hP67.6 (Gemtuzumab)) - Chimeric [NBP2-75906] - Human leukocytes were stained with an isotype control (panel A) or the rabbit-chimeric version of hP67.6 (Gemtuzumab) (NBP2-75906, panel B) at a concentration of 1 ug/ml for 30 mins at RT. After washing, bound antibody was detected using a AF488 conjugated donkey anti-rabbit antibody (ab150073) and cells analysed on a FACSCanto flow-cytometer.





Novus Biologicals USA

10730 E. Briarwood Avenue
Centennial, CO 80112
USA
Phone: 303.730.1950
Toll Free: 1.888.506.6887
Fax: 303.730.1966
nb-customerservice@bio-techne.com

Bio-Techne Canada

21 Canmotor Ave
Toronto, ON M8Z 4E6
Canada
Phone: 905.827.6400
Toll Free: 855.668.8722
Fax: 905.827.6402
canada.inquires@bio-techne.com

Bio-Techne Ltd

19 Barton Lane
Abingdon Science Park
Abingdon, OX14 3NB, United Kingdom
Phone: (44) (0) 1235 529449
Free Phone: 0800 37 34 15
Fax: (44) (0) 1235 533420
info.EMEA@bio-techne.com

General Contact Information

www.novusbio.com
Technical Support: nb-technical@bio-techne.com
Orders: nb-customerservice@bio-techne.com
General: novus@novusbio.com

Products Related to NBP2-75906-0.2mg

HAF008	Goat anti-Rabbit IgG Secondary Antibody [HRP]
NB7160	Goat anti-Rabbit IgG (H+L) Secondary Antibody [HRP]
NBP2-32709PEP	Siglec-3/CD33 Recombinant Protein Antigen
DC140	CD14 [HRP]

Limitations

This product is for research use only and is not approved for use in humans or in clinical diagnosis. Primary Antibodies are guaranteed for 1 year from date of receipt.

For more information on our 100% guarantee, please visit www.novusbio.com/guarantee

Earn gift cards/discounts by submitting a review: www.novusbio.com/reviews/submit/NBP2-75906

Earn gift cards/discounts by submitting a publication using this product:
www.novusbio.com/publications

