

Product Datasheet

CD25/IL-2R alpha Antibody (Basiliximab) [FITC] - Chimeric NBP2-75902F

Unit Size: 0.1 ml

Store at 4C in the dark.

www.novusbio.com



technical@novusbio.com

Protocols, Publications, Related Products, Reviews, Research Tools and Images at:
www.novusbio.com/NBP2-75902F

Updated 10/23/2024 v.20.1

Earn rewards for product
reviews and publications.

Submit a publication at www.novusbio.com/publications

Submit a review at www.novusbio.com/reviews/destination/NBP2-75902F



NBP2-75902F

CD25/IL-2R alpha Antibody (Basiliximab) [FITC] - Chimeric

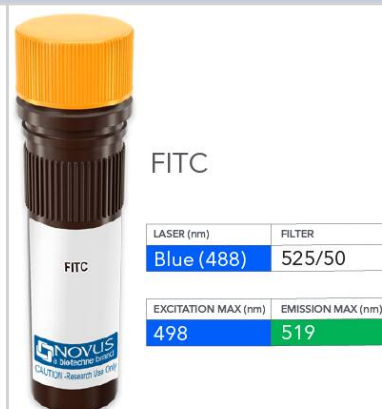
Product Information	
Unit Size	0.1 ml
Concentration	Please see the vial label for concentration. If unlisted please contact technical services.
Storage	Store at 4C in the dark.
Clonality	Monoclonal
Clone	Basiliximab
Preservative	0.05% Sodium Azide
Isotype	IgG1 Kappa
Conjugate	FITC
Purity	Protein A purified
Buffer	PBS

Product Description	
Host	Human
Gene ID	3559
Gene Symbol	IL2RA
Species	Human, Cynomolgus Monkey, Rhesus Macaque
Specificity/Sensitivity	Basiliximab recognises the human IL-2R and binds to the epitope (116)ERIYHFV (122) within the extracellular domain of the CD25 subunit -binding is abolished when 2 or more residues within the epitope are mutated. This epitope overlaps with the interaction site of CD25 and IL-2. CD25 is found in the high-affinity IL-2R ((alpha)(beta)(gamma)c) -T cells only express CD25 upon activation. IL-2 binding to IL-2R on T cells modulates proliferation and differentiation.
Immunogen	Basiliximab was prepared by immunizing BALB/c mice with CTC 16 cells.

Product Application Details	
Applications	Western Blot, Flow Cytometry, Immunocytochemistry/ Immunofluorescence, Immunohistochemistry, Block/Neutralize
Recommended Dilutions	Western Blot, Flow Cytometry, Immunohistochemistry, Immunocytochemistry/ Immunofluorescence, Block/Neutralize
Application Notes	Optimal dilution of this antibody should be experimentally determined.

Images

CD25/IL-2R alpha Antibody (Basiliximab) [FITC] - Chimeric [NBP2-75902F] - Vial of FITC conjugated antibody. FITC is optimally excited at 498 nm by the Blue laser (488 nm) and has an emission maximum of 519 nm.





Novus Biologicals USA

10730 E. Briarwood Avenue
Centennial, CO 80112
USA
Phone: 303.730.1950
Toll Free: 1.888.506.6887
Fax: 303.730.1966
nb-customerservice@bio-techne.com

Bio-Techne Canada

21 Canmotor Ave
Toronto, ON M8Z 4E6
Canada
Phone: 905.827.6400
Toll Free: 855.668.8722
Fax: 905.827.6402
canada.inquires@bio-techne.com

Bio-Techne Ltd

19 Barton Lane
Abingdon Science Park
Abingdon, OX14 3NB, United Kingdom
Phone: (44) (0) 1235 529449
Free Phone: 0800 37 34 15
Fax: (44) (0) 1235 533420
info.EMEA@bio-techne.com

General Contact Information

www.novusbio.com
Technical Support: nb-technical@bio-techne.com
Orders: nb-customerservice@bio-techne.com
General: novus@novusbio.com

Products Related to NBP2-75902F

NBP3-06872F	Human IgG1 Kappa Isotype Control [FITC]
NBP2-38730PEP	CD25/IL-2R alpha Recombinant Protein Antigen
210-TA-005	TNF-alpha [Unconjugated]
DR2A00	CD25/IL-2R alpha [HRP]

Limitations

This product is for research use only and is not approved for use in humans or in clinical diagnosis. Primary Antibodies are guaranteed for 1 year from date of receipt.

For more information on our 100% guarantee, please visit www.novusbio.com/guarantee

Earn gift cards/discounts by submitting a review: www.novusbio.com/reviews/submit/NBP2-75902F

Earn gift cards/discounts by submitting a publication using this product:
www.novusbio.com/publications

