

Product Datasheet

GluR2 Antibody (JU20-43) NBP2-75510

Unit Size: 100 ul

Store at 4C short term. Aliquot and store at -20C long term. Avoid freeze-thaw cycles.

www.novusbio.com



technical@novusbio.com

Publications: 2

Protocols, Publications, Related Products, Reviews, Research Tools and Images at:
www.novusbio.com/NBP2-75510

Updated 10/23/2024 v.20.1

Earn rewards for product
reviews and publications.

Submit a publication at www.novusbio.com/publications

Submit a review at www.novusbio.com/reviews/destination/NBP2-75510



NBP2-75510

GluR2 Antibody (JU20-43)

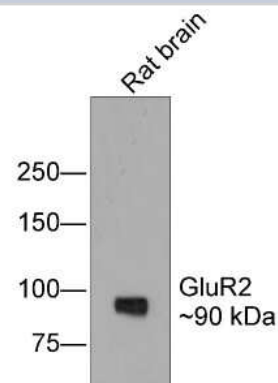
Product Information	
Unit Size	100 ul
Concentration	1 mg/ml
Storage	Store at 4C short term. Aliquot and store at -20C long term. Avoid freeze-thaw cycles.
Clonality	Monoclonal
Clone	JU20-43
Preservative	0.05% Sodium Azide
Isotype	IgG
Purity	Protein A purified
Buffer	TBS (pH7.4), 0.05% BSA, 40% Glycerol
Target Molecular Weight	99 kDa

Product Description	
Host	Rabbit
Gene ID	2891
Gene Symbol	GRIA2
Species	Human, Mouse, Rat
Immunogen	Synthetic peptide within Human GluR2 aa 181-230 / 883. (SwissProt: P42262 Human; SwissProt: P23819 Mouse; SwissProt: P19491 Rat)

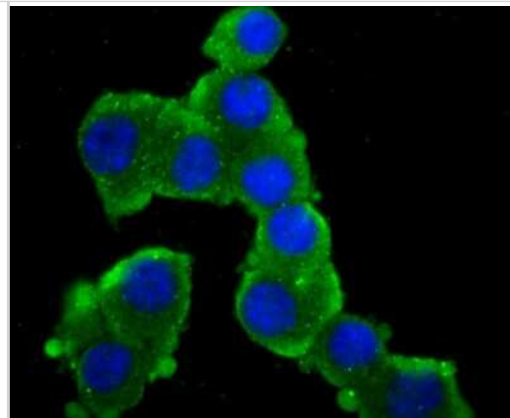
Product Application Details	
Applications	Western Blot, Immunocytochemistry/ Immunofluorescence, Immunohistochemistry, Immunohistochemistry-Paraffin, Immunoprecipitation
Recommended Dilutions	Western Blot 1:500, Immunohistochemistry, Immunocytochemistry/ Immunofluorescence 1:50-1:200, Immunoprecipitation, Immunohistochemistry-Paraffin 1:50-1:200

Images

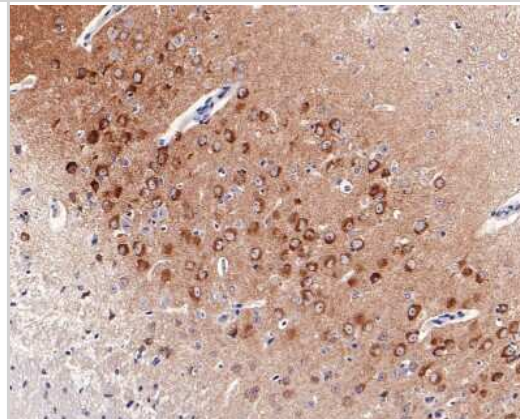
Western Blot: GluR2 Antibody (JU20-43) [NBP2-75510] - Analysis of GluR2 on rat brain lysates with Rabbit anti-GluR2 antibody at 1/500 dilution. Lysates/proteins at 20 ug/Lane. Predicted band size: 99 kDa Observed band size: 90 kDa Exposure time: 2 minutes; 6% SDS-PAGE gel. Proteins were transferred to a PVDF membrane and blocked with 5% NFDM/TBST for 1 hour at room temperature. The primary antibody at 1/500 dilution was used in 5% NFDM/TBST at room temperature for 2 hours. Goat Anti-Rabbit IgG - HRP Secondary Antibody at 1:200,000 dilution was used for 1 hour at room temperature.



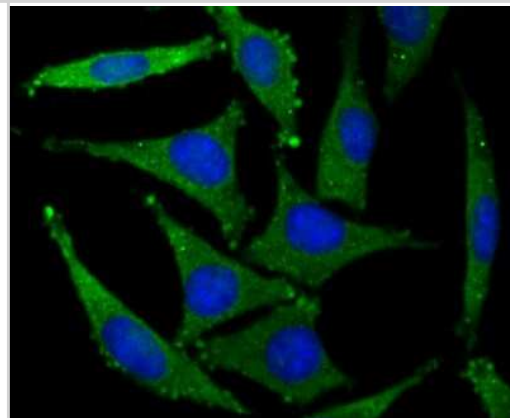
Immunocytochemistry/Immunofluorescence: GluR2 Antibody (JU20-43) [NBP2-75510] - Staining GluR2 in N2A cells (green). The nuclear counter stain is DAPI (blue). Cells were fixed in paraformaldehyde, permeabilised with 0.25% Triton X100/PBS.



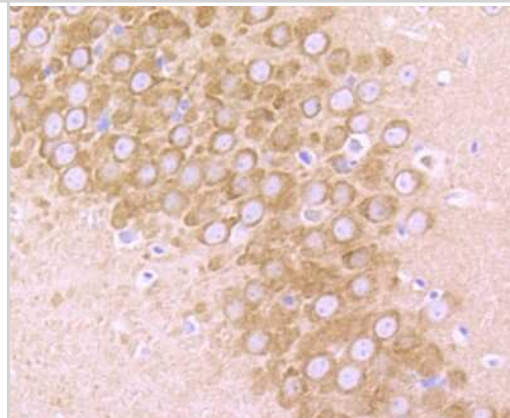
Immunohistochemistry-Paraffin: GluR2 Antibody (JU20-43) [NBP2-75510] - Analysis of paraffin-embedded mouse brain tissue with Rabbit anti-GluR2 antibody washed with ddH₂O and PBS, and then probed with the primary antibody at 1/200 dilution for 1 hour at room temperature. The detection was performed using an HRP conjugated compact polymer system. DAB was used as the chromogen. Tissues were counterstained with hematoxylin and mounted with DPX.



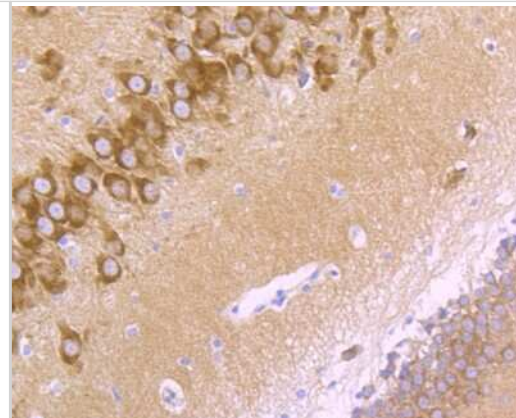
Immunocytochemistry/Immunofluorescence: GluR2 Antibody (JU20-43) [NBP2-75510] - Staining GluR2 in SH-SY5Y cells (green). The nuclear counter stain is DAPI (blue). Cells were fixed in paraformaldehyde, permeabilised with 0.25% Triton X100/PBS.



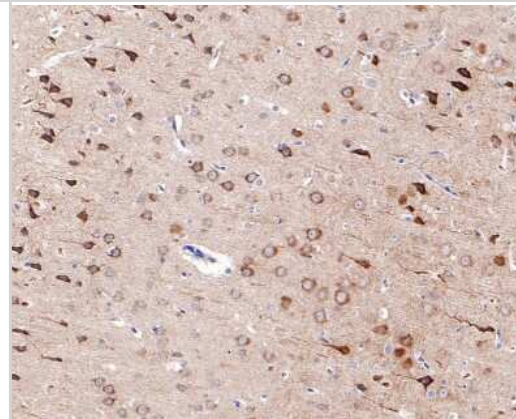
Immunohistochemistry-Paraffin: GluR2 Antibody (JU20-43) [NBP2-75510] - Analysis of paraffin-embedded mouse brain tissue using anti-GluR2 antibody. Counter stained with hematoxylin.



Immunohistochemistry-Paraffin: GluR2 Antibody (JU20-43) [NBP2-75510] - Analysis of paraffin-embedded rat brain tissue using anti-GluR2 antibody. Counter stained with hematoxylin.



Immunohistochemistry-Paraffin: GluR2 Antibody (JU20-43) [NBP2-75510] - Analysis of paraffin-embedded rat brain tissue with Rabbit anti-GluR2 antibody washed with ddH₂O and PBS, and then probed with the primary antibody at 1/200 dilution for 1 hour at room temperature. The detection was performed using an HRP conjugated compact polymer system. DAB was used as the chromogen. Tissues were counterstained with hematoxylin and mounted with DPX.



Publications

Zhang N, Zhang Z, He R et al. GLAST-CreER(T2) mediated deletion of GDNF increases brain damage and exacerbates long-term stroke outcomes after focal ischemic stroke in mouse model *Glia* 2020-06-04 [PMID: 32497340]

Kulikov AA, Naumova AA, Dorofeeva NA et al. Dynamics of neurodegeneration in the hippocampus of Krushinsky-Molodkina rats correlates with the progression of limbic seizures *Epilepsy & behavior : E&B* 2022-07-15 [PMID: 35849865]



Novus Biologicals USA

10730 E. Briarwood Avenue
Centennial, CO 80112
USA
Phone: 303.730.1950
Toll Free: 1.888.506.6887
Fax: 303.730.1966
nb-customerservice@bio-techne.com

Bio-Techne Canada

21 Canmotor Ave
Toronto, ON M8Z 4E6
Canada
Phone: 905.827.6400
Toll Free: 855.668.8722
Fax: 905.827.6402
canada.inquires@bio-techne.com

Bio-Techne Ltd

19 Barton Lane
Abingdon Science Park
Abingdon, OX14 3NB, United Kingdom
Phone: (44) (0) 1235 529449
Free Phone: 0800 37 34 15
Fax: (44) (0) 1235 533420
info.EMEA@bio-techne.com

General Contact Information

www.novusbio.com
Technical Support: nb-technical@bio-techne.com
Orders: nb-customerservice@bio-techne.com
General: novus@novusbio.com

Products Related to NBP2-75510

HAF008	Goat anti-Rabbit IgG Secondary Antibody [HRP]
NB7160	Goat anti-Rabbit IgG (H+L) Secondary Antibody [HRP]
NBP2-24891	Rabbit IgG Isotype Control
NBP2-10653	GluR2 Overexpression Lysate

Limitations

This product is for research use only and is not approved for use in humans or in clinical diagnosis. Primary Antibodies are guaranteed for 1 year from date of receipt.

For more information on our 100% guarantee, please visit www.novusbio.com/guarantee

Earn gift cards/discounts by submitting a review: www.novusbio.com/reviews/submit/NBP2-75510

Earn gift cards/discounts by submitting a publication using this product:
www.novusbio.com/publications

