

Product Datasheet

Chymase/CMA1/Mast Cell Chymase Antibody (JB74-32) NBP2-75441

Unit Size: 100 ul

Store at 4C short term. Aliquot and store at -20C long term. Avoid freeze-thaw cycles.

www.novusbio.com



technical@novusbio.com

Protocols, Publications, Related Products, Reviews, Research Tools and Images at:
www.novusbio.com/NBP2-75441

Updated 10/23/2024 v.20.1

Earn rewards for product
reviews and publications.

Submit a publication at www.novusbio.com/publications

Submit a review at www.novusbio.com/reviews/destination/NBP2-75441



NBP2-75441**Chymase/CMA1/Mast Cell Chymase Antibody (JB74-32)****Product Information**

Unit Size	100 ul
Concentration	1 mg/ml
Storage	Store at 4C short term. Aliquot and store at -20C long term. Avoid freeze-thaw cycles.
Clonality	Monoclonal
Clone	JB74-32
Preservative	0.05% Sodium Azide
Isotype	IgG
Purity	Protein A purified
Buffer	TBS (pH7.4), 0.05% BSA, 40% Glycerol
Target Molecular Weight	27 kDa

Product Description

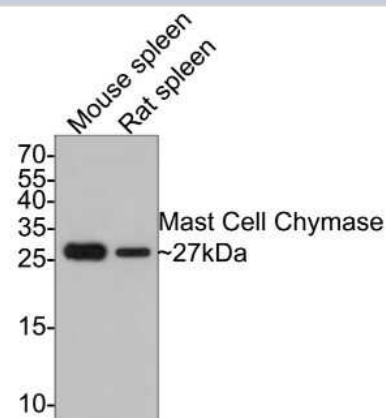
Host	Rabbit
Gene ID	1215
Gene Symbol	CMA1
Species	Human, Mouse, Rat
Immunogen	Synthetic peptide within Human Chymase/CMA1/Mast Cell Chymase aa 198-247 / 247. (SwissProt: P23946 Human; SwissProt: P21844 Mouse; SwissProt: P50339 Rat)

Product Application Details

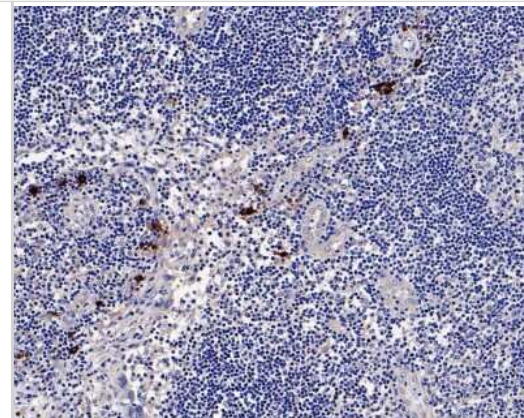
Applications	Western Blot, Immunohistochemistry, Immunohistochemistry-Paraffin
Recommended Dilutions	Western Blot 1:500, Immunohistochemistry, Immunohistochemistry-Paraffin 1:50 -1:200

Images

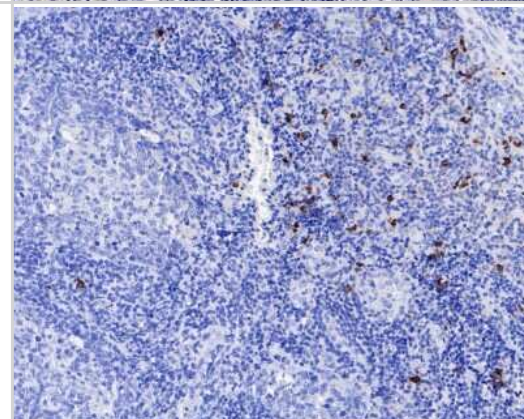
Western Blot: Chymase/CMA1/Mast Cell Chymase Antibody (JB74-32) [NBP2-75441] - Analysis of Chymase/CMA1/Mast Cell on different lysates with Rabbit anti-Chymase/CMA1/Mast Cell antibody at 1/500 dilution. Lane 1: Mouse spleen tissue lysate Lane 2: Rat spleen tissue lysate Lysates/proteins at 20 ug/Lane. Predicted band size: 27 kDa Observed band size: 27 kDa Exposure time: 2 minutes; 15% SDS-PAGE gel. Proteins were transferred to a PVDF membrane and blocked with 5% NFDm/TBST for 1 hour at room temperature. The primary antibody at 1/500 dilution was used in 5% NFDm/TBST at room temperature for 2 hours. Goat Anti-Rabbit IgG - HRP Secondary Antibody at 1:300,000 dilution was used for 1 hour at room temperature.



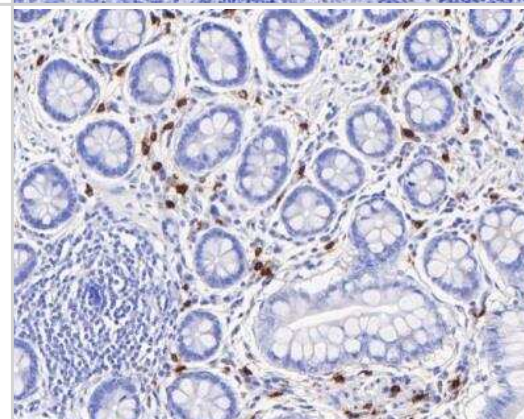
Immunohistochemistry-Paraffin: Chymase/CMA1/Mast Cell Chymase Antibody (JB74-32) [NBP2-75441] - Analysis of paraffin-embedded human lymph nodes tissue with Rabbit anti-Chymase/CMA1/Mast Cell Chymase antibody washed with ddH₂O and PBS, and then probed with the primary antibody at 1/800 dilution for 1 hour at room temperature. The detection was performed using an HRP conjugated compact polymer system. DAB was used as the chromogen. Tissues were counterstained with hematoxylin and mounted with DPX.



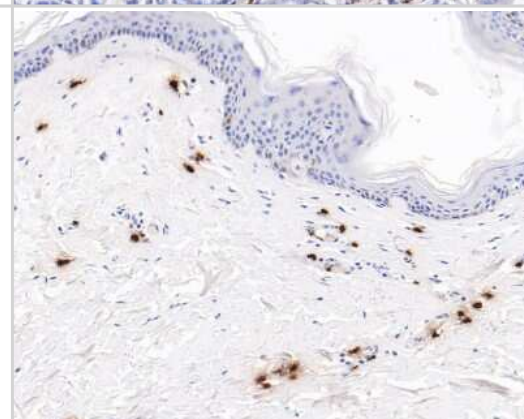
Immunohistochemistry-Paraffin: Chymase/CMA1/Mast Cell Chymase Antibody (JB74-32) [NBP2-75441] - Analysis of paraffin-embedded human tonsil tissue using anti-Mast Cell Chymase antibody. The section was pre-treated using heat mediated antigen retrieval with Tris-EDTA buffer (pH 8.0-8.4) for 20 minutes. The tissues were blocked in 5% BSA for 30 minutes at room temperature, washed with ddH₂O and PBS, and then probed with the primary antibody (1/50) for 30 minutes at room temperature. The detection was performed using an HRP conjugated compact polymer system. DAB was used as the chromogen. Tissues were counterstained with hematoxylin and mounted with DPX.



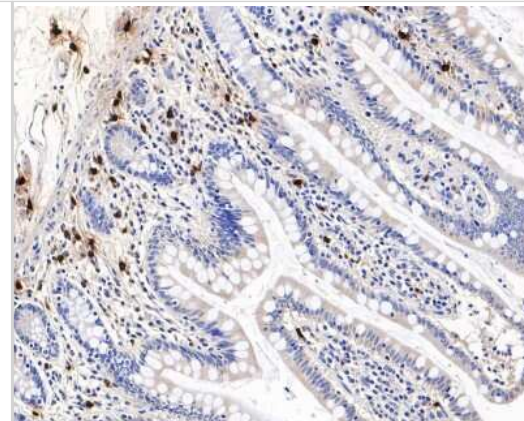
Immunohistochemistry-Paraffin: Chymase/CMA1/Mast Cell Chymase Antibody (JB74-32) [NBP2-75441] - Human small intestine tissue using anti-Mast Cell Chymase antibody. The section was pre-treated using heat mediated antigen retrieval with Tris-EDTA buffer (pH 8.0-8.4) for 20 minutes. The tissues were blocked in 5% BSA for 30 minutes at room temperature, washed with ddH₂O and PBS, and then probed with the primary antibody (1/200) for 30 minutes at room temperature. The detection was performed using an HRP conjugated compact polymer system. DAB was used as the chromogen. Tissues were counterstained with hematoxylin and mounted with DPX.



Immunohistochemistry-Paraffin: Chymase/CMA1/Mast Cell Chymase Antibody (JB74-32) [NBP2-75441] - Analysis of paraffin-embedded human skin tissue using anti-Mast Cell Chymase antibody. The section was pre-treated using heat mediated antigen retrieval with Tris-EDTA buffer (pH 8.0-8.4) for 20 minutes. The tissues were blocked in 5% BSA for 30 minutes at room temperature, washed with ddH₂O and PBS, and then probed with the primary antibody (1/50) for 30 minutes at room temperature. The detection was performed using an HRP conjugated compact polymer system. DAB was used as the chromogen. Tissues were counterstained with hematoxylin and mounted with DPX.



Immunohistochemistry-Paraffin: Chymase/CMA1/Mast Cell Chymase Antibody (JB74-32) [NBP2-75441] - Analysis of paraffin-embedded human small intestine tissue with Rabbit anti-Chymase/CMA1/Mast Cell Chymase antibody washed with ddH₂O and PBS, and then probed with the primary antibody at 1/800 dilution for 1 hour at room temperature. The detection was performed using an HRP conjugated compact polymer system. DAB was used as the chromogen. Tissues were counterstained with hematoxylin and mounted with DPX.





Novus Biologicals USA

10730 E. Briarwood Avenue
Centennial, CO 80112
USA
Phone: 303.730.1950
Toll Free: 1.888.506.6887
Fax: 303.730.1966
nb-customerservice@bio-techne.com

Bio-Techne Canada

21 Canmotor Ave
Toronto, ON M8Z 4E6
Canada
Phone: 905.827.6400
Toll Free: 855.668.8722
Fax: 905.827.6402
canada.inquires@bio-techne.com

Bio-Techne Ltd

19 Barton Lane
Abingdon Science Park
Abingdon, OX14 3NB, United Kingdom
Phone: (44) (0) 1235 529449
Free Phone: 0800 37 34 15
Fax: (44) (0) 1235 533420
info.EMEA@bio-techne.com

General Contact Information

www.novusbio.com
Technical Support: nb-technical@bio-
techne.com
Orders: nb-customerservice@bio-techne.com
General: novus@novusbio.com

Products Related to NBP2-75441

HAF008	Goat anti-Rabbit IgG Secondary Antibody [HRP]
NB7160	Goat anti-Rabbit IgG (H+L) Secondary Antibody [HRP]
NBP2-24891	Rabbit IgG Isotype Control
NBP2-33660PEP	Chymase/CMA1/Mast Cell Chymase Recombinant Protein Antigen

Limitations

This product is for research use only and is not approved for use in humans or in clinical diagnosis. Primary Antibodies are guaranteed for 1 year from date of receipt.

For more information on our 100% guarantee, please visit www.novusbio.com/guarantee

Earn gift cards/discounts by submitting a review: www.novusbio.com/reviews/submit/NBP2-75441

Earn gift cards/discounts by submitting a publication using this product:
www.novusbio.com/publications

