

Product Datasheet

SLA2 Antibody (OTI3A7) - Azide and BSA Free NBP2-74210

Unit Size: 100 ug

Store at -20C. Avoid freeze-thaw cycles.

www.novusbio.com



technical@novusbio.com

Protocols, Publications, Related Products, Reviews, Research Tools and Images at:
www.novusbio.com/NBP2-74210

Updated 9/9/2025 v.20.1

Earn rewards for product
reviews and publications.

Submit a publication at www.novusbio.com/publications

Submit a review at www.novusbio.com/reviews/destination/NBP2-74210



NBP2-74210

SLA2 Antibody (OTI3A7) - Azide and BSA Free

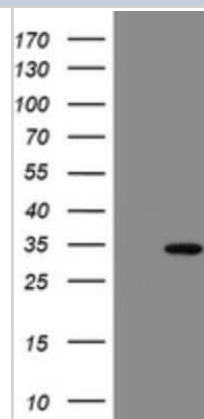
Product Information	
Unit Size	100 ug
Concentration	LYOPH mg/ml
Storage	Store at -20C. Avoid freeze-thaw cycles.
Clonality	Monoclonal
Clone	OTI3A7
Preservative	No Preservative
Reconstitution Instructions	we recommend adding 100uL distilled water to a final antibody concentration of about 1 mg/mL. To use this carrier-free antibody for conjugation experiment, we strongly recommend performing another round of desalting process.
Isotype	IgG1
Purity	Immunogen affinity purified
Buffer	Lyophilized from PBS (pH 7.3) with 8% Trehalose
Target Molecular Weight	28.4 kDa

Product Description	
Description	Novus Biologicals Mouse SLA2 Antibody (OTI3A7) - Azide and BSA Free (NBP2-45867) is a monoclonal antibody validated for use in IHC, WB and Flow. All Novus Biologicals antibodies are covered by our 100% guarantee.
Host	Mouse
Gene ID	84174
Gene Symbol	SLA2
Species	Human
Immunogen	Full length human recombinant protein of human SLA2(NP_115590) produced in HEK293T cell.

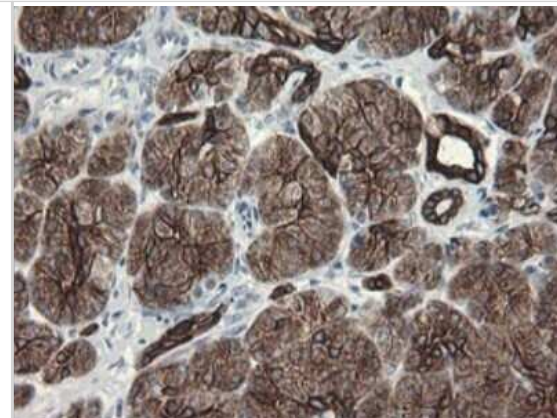
Product Application Details	
Applications	Western Blot, Immunohistochemistry-Paraffin, Flow Cytometry, Immunohistochemistry, CyTOF-ready
Recommended Dilutions	Western Blot 1:2000, Flow Cytometry 1:100, Immunohistochemistry 1:150, Immunohistochemistry-Paraffin 1:150, CyTOF-ready

Images

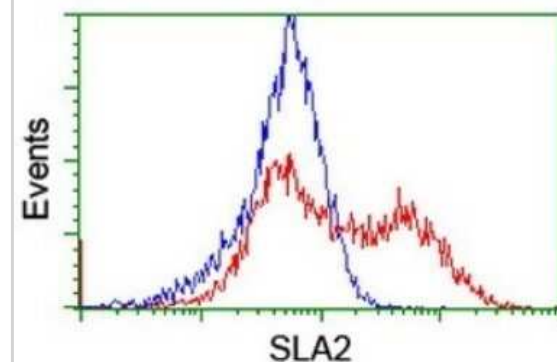
Western Blot: SLA2 Antibody (OTI3A7) - Azide and BSA Free [NBP2-74210] - Analysis of HEK293T cells were transfected with the pCMV6-ENTRY control (Left lane) or pCMV6-ENTRY SLA2.



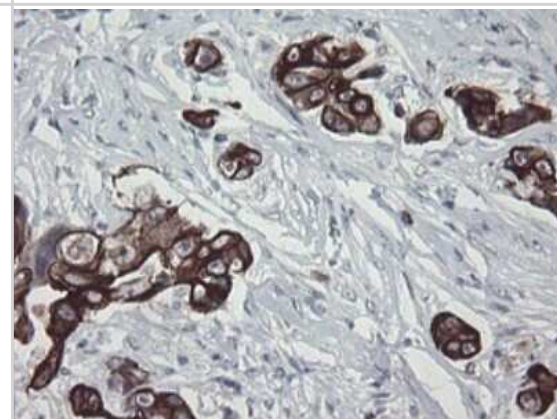
Immunohistochemistry: SLA2 Antibody (OTI3A7) - Azide and BSA Free [NBP2-74210] - Analysis of Human pancreas tissue.



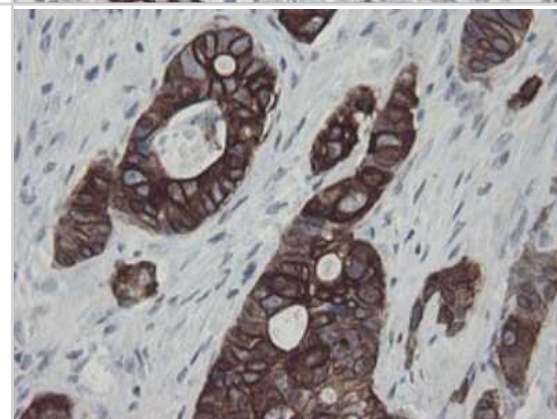
Flow Cytometry: SLA2 Antibody (OTI3A7) - Azide and BSA Free [NBP2-74210] - Analysis of HEK293T cells transfected with either overexpress plasmid(Red) or empty vector control plasmid(Blue) were immunostaining by SLA2 antibody.



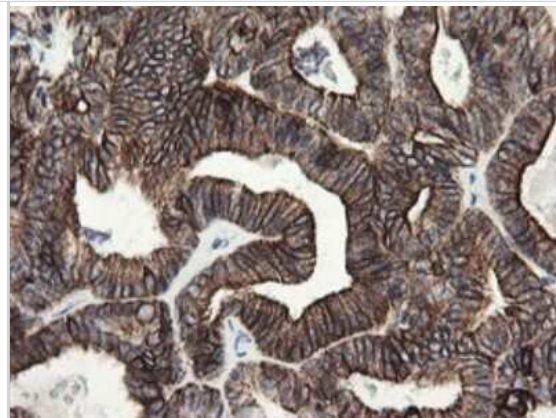
Immunohistochemistry: SLA2 Antibody (OTI3A7) - Azide and BSA Free [NBP2-74210] - Analysis of Adenocarcinoma of Human breast tissue.



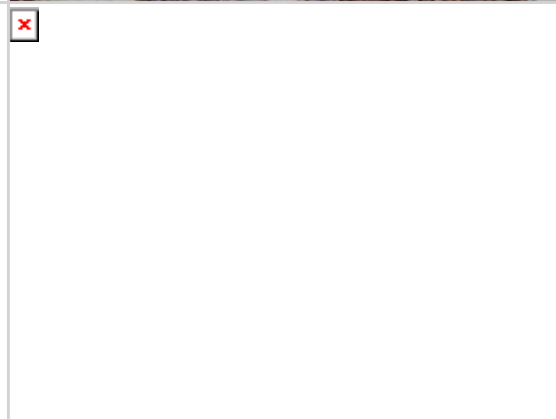
Immunohistochemistry: SLA2 Antibody (OTI3A7) - Azide and BSA Free [NBP2-74210] - Analysis of Adenocarcinoma of Human colon tissue.



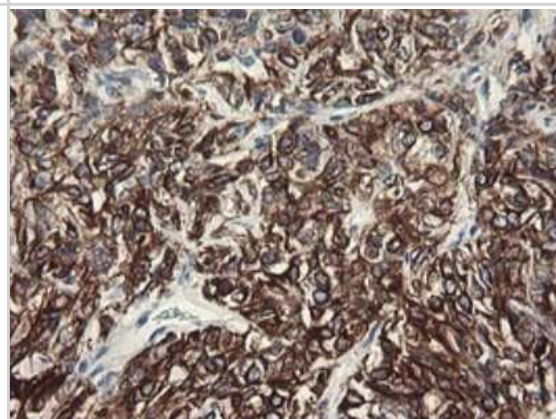
Immunohistochemistry: SLA2 Antibody (OTI3A7) - Azide and BSA Free [NBP2-74210] - Analysis of Adenocarcinoma of Human endometrium tissue.



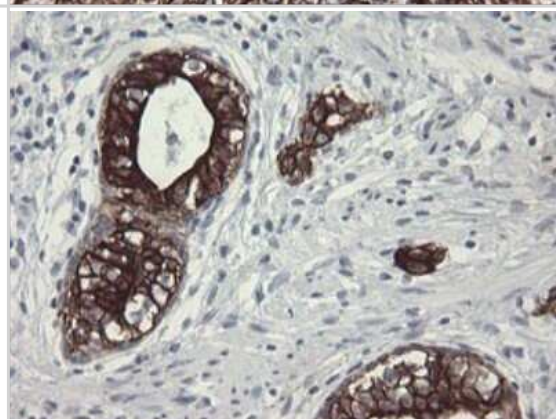
Immunohistochemistry: SLA2 Antibody (OTI3A7) - Azide and BSA Free [NBP2-74210] - Analysis of Adenocarcinoma of Human ovary tissue.



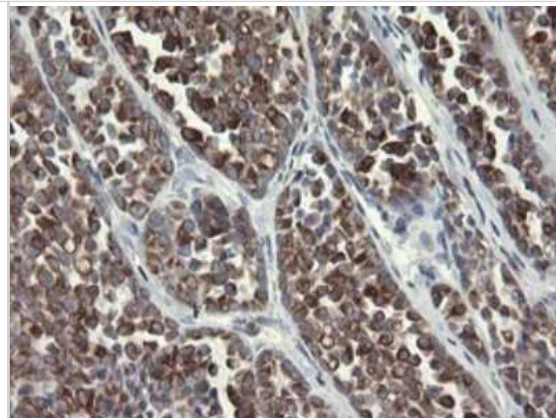
Immunohistochemistry: SLA2 Antibody (OTI3A7) - Azide and BSA Free [NBP2-74210] - Analysis of Carcinoma of Human kidney tissue.



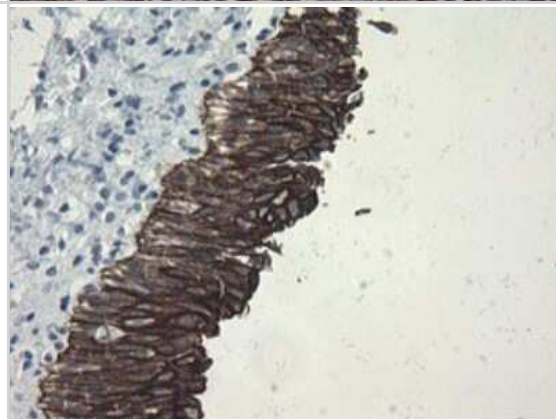
Immunohistochemistry: SLA2 Antibody (OTI3A7) - Azide and BSA Free [NBP2-74210] - Analysis of Carcinoma of Human prostate tissue.



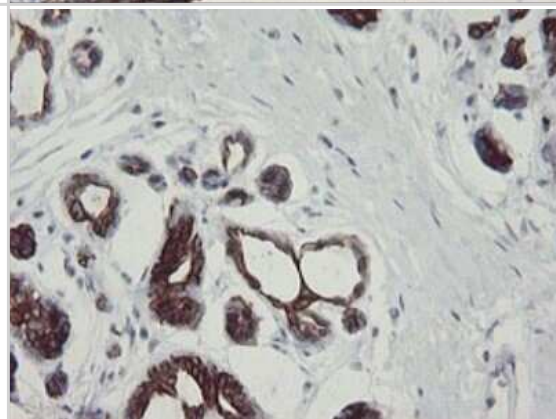
Immunohistochemistry: SLA2 Antibody (OTI3A7) - Azide and BSA Free [NBP2-74210] - Analysis of Carcinoma of Human thyroid tissue.



Immunohistochemistry: SLA2 Antibody (OTI3A7) - Azide and BSA Free [NBP2-74210] - Analysis of Human bladder tissue.



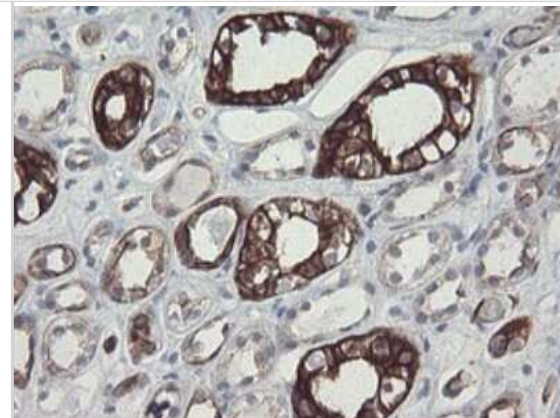
Immunohistochemistry: SLA2 Antibody (OTI3A7) - Azide and BSA Free [NBP2-74210] - Analysis of Human breast tissue.



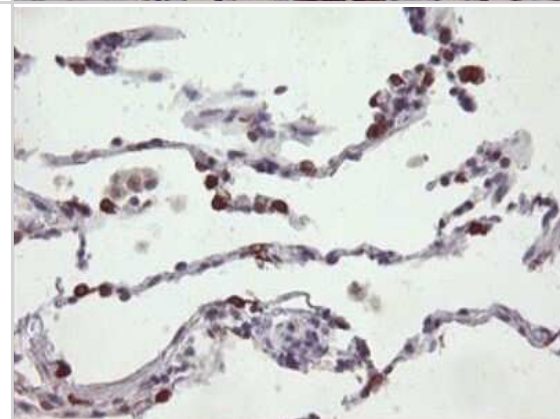
Immunohistochemistry: SLA2 Antibody (OTI3A7) - Azide and BSA Free [NBP2-74210] - Analysis of Human colon tissue.



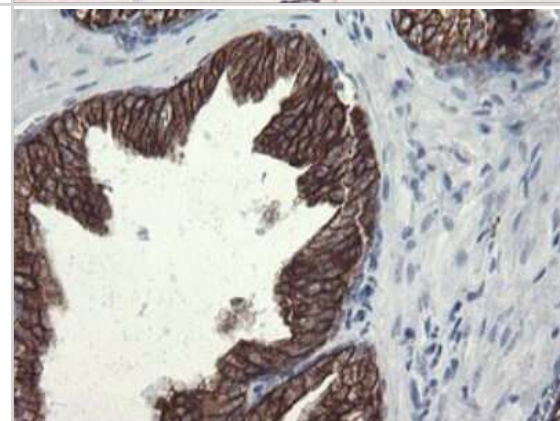
Immunohistochemistry: SLA2 Antibody (OTI3A7) - Azide and BSA Free [NBP2-74210] - Analysis of Human Kidney tissue.



Immunohistochemistry: SLA2 Antibody (OTI3A7) - Azide and BSA Free [NBP2-74210] - Analysis of Human lung tissue.



Immunohistochemistry: SLA2 Antibody (OTI3A7) - Azide and BSA Free [NBP2-74210] - Analysis of Human prostate tissue.





Novus Biologicals USA

10730 E. Briarwood Avenue
Centennial, CO 80112
USA
Phone: 303.730.1950
Toll Free: 1.888.506.6887
Fax: 303.730.1966
nb-customerservice@bio-techne.com

Bio-Techne Canada

21 Canmotor Ave
Toronto, ON M8Z 4E6
Canada
Phone: 905.827.6400
Toll Free: 855.668.8722
Fax: 905.827.6402
canada.inquires@bio-techne.com

Bio-Techne Ltd

19 Barton Lane
Abingdon Science Park
Abingdon, OX14 3NB, United Kingdom
Phone: (44) (0) 1235 529449
Free Phone: 0800 37 34 15
Fax: (44) (0) 1235 533420
info.EMEA@bio-techne.com

General Contact Information

www.novusbio.com
Technical Support: nb-technical@bio-techne.com
Orders: nb-customerservice@bio-techne.com
General: novus@novusbio.com

Products Related to NBP2-74210

HAF007	Goat anti-Mouse IgG Secondary Antibody [HRP]
NB720-B	Rabbit anti-Mouse IgG (H+L) Secondary Antibody [Biotin]
NBP1-97005-0.5mg	Mouse IgG1 Isotype Control (MG1)
NBP2-22823	Recombinant Human SLA2 His Protein

Limitations

This product is for research use only and is not approved for use in humans or in clinical diagnosis. Primary Antibodies are guaranteed for 1 year from date of receipt.

For more information on our 100% guarantee, please visit www.novusbio.com/guarantee

Earn gift cards/discounts by submitting a review: www.novusbio.com/reviews/submit/NBP2-74210

Earn gift cards/discounts by submitting a publication using this product:
www.novusbio.com/publications

