

# Product Datasheet

## PTP1B/PTPN1 Antibody (OTI1D10) - Azide and BSA Free NBP2-73729

Unit Size: 100 ug

Store at -20C. Avoid freeze-thaw cycles.

[www.novusbio.com](http://www.novusbio.com)



[technical@novusbio.com](mailto:technical@novusbio.com)

Protocols, Publications, Related Products, Reviews, Research Tools and Images at:  
[www.novusbio.com/NBP2-73729](http://www.novusbio.com/NBP2-73729)

Updated 10/23/2024 v.20.1

Earn rewards for product  
reviews and publications.

Submit a publication at [www.novusbio.com/publications](http://www.novusbio.com/publications)

Submit a review at [www.novusbio.com/reviews/destination/NBP2-73729](http://www.novusbio.com/reviews/destination/NBP2-73729)



**NBP2-73729**

PTP1B/PTPN1 Antibody (OTI1D10) - Azide and BSA Free

**Product Information**

<b>Unit Size</b>	100 ug
<b>Concentration</b>	LYOPH mg/ml
<b>Storage</b>	Store at -20C. Avoid freeze-thaw cycles.
<b>Clonality</b>	Monoclonal
<b>Clone</b>	OTI1D10
<b>Preservative</b>	No Preservative
<b>Reconstitution Instructions</b>	we recommend adding 100uL distilled water to a final antibody concentration of about 1 mg/mL. To use this carrier-free antibody for conjugation experiment, we strongly recommend performing another round of desalting process.
<b>Isotype</b>	IgG2a
<b>Purity</b>	Immunogen affinity purified
<b>Buffer</b>	Lyophilized from PBS (pH 7.3) with 8% Trehalose
<b>Target Molecular Weight</b>	49.8 kDa

**Product Description**

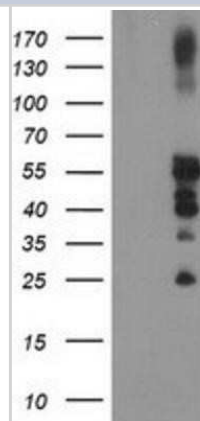
<b>Host</b>	Mouse
<b>Gene ID</b>	5770
<b>Gene Symbol</b>	PTPN1
<b>Species</b>	Human, Rat, Canine, Primate, Monkey
<b>Immunogen</b>	Full length human recombinant protein of human PTPN1(NP_002818) produced in HEK293 cell.

**Product Application Details**

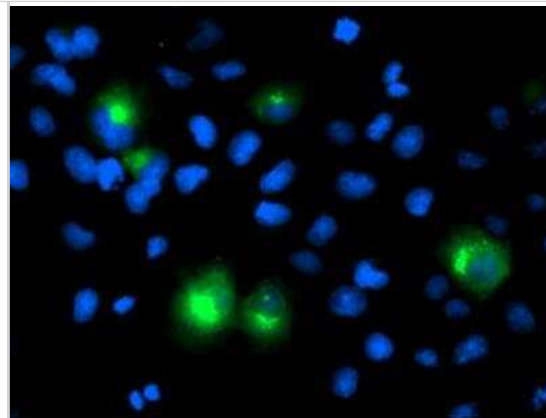
<b>Applications</b>	Western Blot, Flow Cytometry, Immunocytochemistry/ Immunofluorescence, Immunohistochemistry, Immunohistochemistry-Paraffin, CyTOF-ready, Knockout Validated
<b>Recommended Dilutions</b>	Western Blot 1:500-2000, Flow Cytometry 1:100, Immunohistochemistry 1:150, Immunocytochemistry/ Immunofluorescence 1:100, Immunohistochemistry-Paraffin, CyTOF-ready, Knockout Validated

**Images**

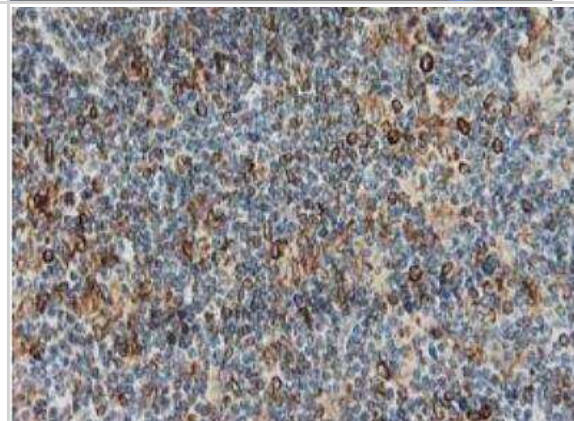
Western Blot: PTP1B/PTPN1 Antibody (OTI1D10) - Azide and BSA Free [NBP2-73729] - HEK293T cells were transfected with the pCMV6-ENTRY control (Left lane) or pCMV6-ENTRY PTPN1 (Right lane) cDNA for 48 hrs and lysed. Equivalent amounts of cell lysates (5 ug per lane) were separated by SDS-PAGE and immunoblotted with anti-PTPN1.



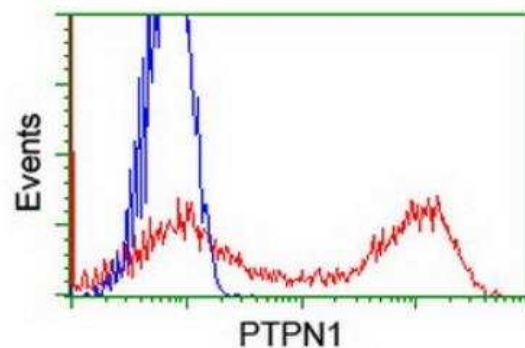
**Immunocytochemistry/Immunofluorescence:** PTP1B/PTPN1 Antibody (OT11D10) - Azide and BSA Free [NBP2-73729] - Staining of COS7 cells transiently transfected by pCMV6-ENTRY PTPN1.



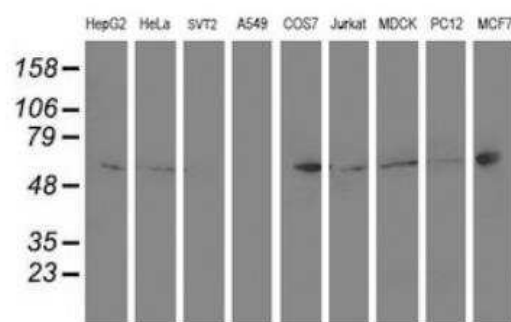
**Immunohistochemistry-Paraffin:** PTP1B/PTPN1 Antibody (OT11D10) - Azide and BSA Free [NBP2-73729] - Staining of paraffin-embedded Human lymphoma tissue using anti-PTPN1 mouse monoclonal antibody. (Heat-induced epitope retrieval by 10mM citric buffer, pH6.0, 100C for 10min.



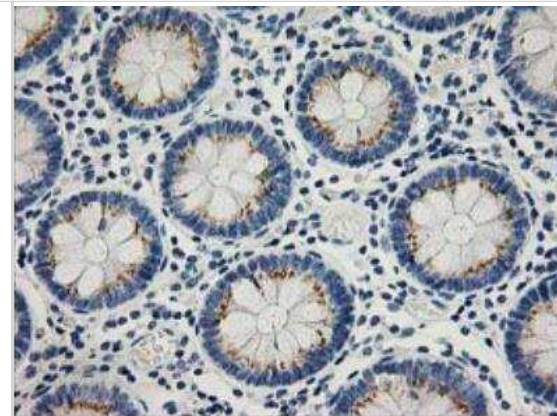
**Flow Cytometry:** PTP1B/PTPN1 Antibody (OT11D10) - Azide and BSA Free [NBP2-73729] - HEK293T cells transfected with either RC204902 overexpress plasmid (Red) or empty vector control plasmid (Blue) were immunostained by anti-PTPN1 antibody and then analyzed.



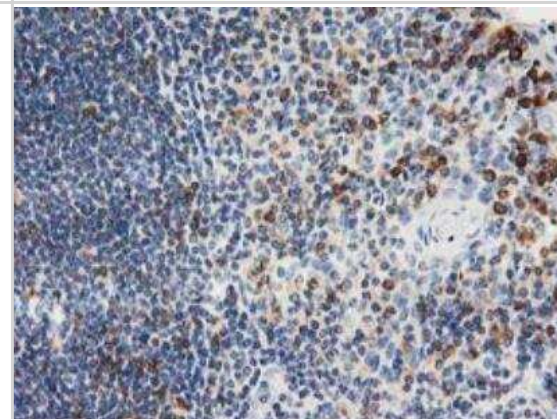
**Western Blot:** PTP1B/PTPN1 Antibody (OT11D10) - Azide and BSA Free [NBP2-73729] - Analysis of extracts (35ug) from 9 different cell lines by using anti-PTPN1 monoclonal antibody.



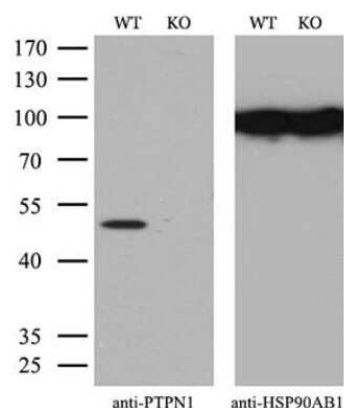
Immunohistochemistry-Paraffin: PTP1B/PTPN1 Antibody (OTI1D10) - Azide and BSA Free [NBP2-73729] - Staining of paraffin-embedded Human colon tissue within the normal limits using anti-PTPN1 mouse monoclonal antibody. (Heat-induced epitope retrieval by 10mM citric buffer, pH6.0, 100C for 10min.



Immunohistochemistry-Paraffin: PTP1B/PTPN1 Antibody (OTI1D10) - Azide and BSA Free [NBP2-73729] - Staining of paraffin-embedded Human lymph node tissue within the normal limits using anti-PTPN1 mouse monoclonal antibody. (Heat-induced epitope retrieval by 10mM citric buffer, pH6.0, 100C for 10min.



Knockout Validated: PTP1B/PTPN1 Antibody (OTI1D10) - Azide and BSA Free [NBP2-73729] - Equivalent amounts of cell lysates (10 ug per lane) of wild-type Hela cells (WT) and PTPN1-Knockout Hela cells (KO) were separated by SDS-PAGE and immunoblotted with anti-PTPN1 monoclonal antibody. Then the blotted membrane was stripped and reprobed with anti-HSP90AB1 antibody as a loading control.(1:500)F





### **Novus Biologicals USA**

10730 E. Briarwood Avenue  
Centennial, CO 80112  
USA  
Phone: 303.730.1950  
Toll Free: 1.888.506.6887  
Fax: 303.730.1966  
nb-customerservice@bio-techne.com

### **Bio-Techne Canada**

21 Canmotor Ave  
Toronto, ON M8Z 4E6  
Canada  
Phone: 905.827.6400  
Toll Free: 855.668.8722  
Fax: 905.827.6402  
canada.inquires@bio-techne.com

### **Bio-Techne Ltd**

19 Barton Lane  
Abingdon Science Park  
Abingdon, OX14 3NB, United Kingdom  
Phone: (44) (0) 1235 529449  
Free Phone: 0800 37 34 15  
Fax: (44) (0) 1235 533420  
info.EMEA@bio-techne.com

### **General Contact Information**

[www.novusbio.com](http://www.novusbio.com)  
Technical Support: nb-technical@bio-techne.com  
Orders: nb-customerservice@bio-techne.com  
General: novus@novusbio.com

### **Products Related to NBP2-73729**

---

HAF007	Goat anti-Mouse IgG Secondary Antibody [HRP]
NB720-B	Rabbit anti-Mouse IgG (H+L) Secondary Antibody [Biotin]
NBP1-96778	Mouse IgG2a Isotype Control (M2A)
NBP1-87191PEP	PTP1B/PTPN1 Recombinant Protein Antigen

---

### **Limitations**

This product is for research use only and is not approved for use in humans or in clinical diagnosis. Primary Antibodies are guaranteed for 1 year from date of receipt.

For more information on our 100% guarantee, please visit [www.novusbio.com/guarantee](http://www.novusbio.com/guarantee)

Earn gift cards/discounts by submitting a review: [www.novusbio.com/reviews/submit/NBP2-73729](http://www.novusbio.com/reviews/submit/NBP2-73729)

Earn gift cards/discounts by submitting a publication using this product:  
[www.novusbio.com/publications](http://www.novusbio.com/publications)

