

Product Datasheet

MEF2C Antibody (OT11H5) [mFluor Violet 610 SE] NBP2-72627MFV610

Unit Size: 0.1 ml

Store at 4C in the dark.

www.novusbio.com



technical@novusbio.com

Protocols, Publications, Related Products, Reviews, Research Tools and Images at:
www.novusbio.com/NBP2-72627MFV610

Updated 11/9/2023 v.20.1

Earn rewards for product
reviews and publications.

Submit a publication at www.novusbio.com/publications

Submit a review at www.novusbio.com/reviews/destination/NBP2-72627MFV610



NBP2-72627MFV610

MEF2C Antibody (OT11H5) [mFluor Violet 610 SE]

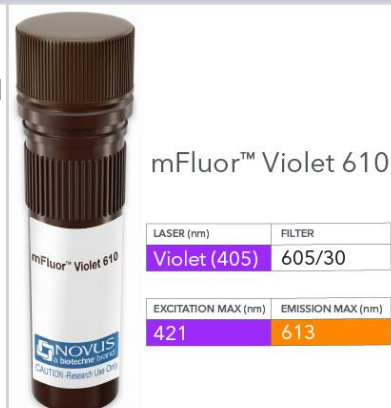
Product Information	
Unit Size	0.1 ml
Concentration	Please see the vial label for concentration. If unlisted please contact technical services.
Storage	Store at 4C in the dark.
Clonality	Monoclonal
Clone	OT11H5
Preservative	0.05% Sodium Azide
Isotype	IgG1
Conjugate	mFluor Violet 610 SE
Purity	Immunogen affinity purified
Buffer	50mM Sodium Borate

Product Description	
Host	Mouse
Gene ID	4208
Gene Symbol	MEF2C
Species	Human, Mouse, Rat
Reactivity Notes	Please note that this antibody is reactive to Mouse and derived from the same host, Mouse. Mouse-On-Mouse blocking reagent may be needed for IHC and ICC experiments to reduce high background signal. You can find these reagents under catalog numbers PK-2200-NB and MP-2400-NB. Please contact Technical Support if you have any questions.
Immunogen	Full length human recombinant protein of human MEF2C (NP_002388) produced in HEK293T cell.

Product Application Details	
Applications	Western Blot, Flow Cytometry, Immunocytochemistry/Immunofluorescence, Immunohistochemistry-Paraffin
Recommended Dilutions	Western Blot, Flow Cytometry, Immunocytochemistry/Immunofluorescence, Immunohistochemistry-Paraffin
Application Notes	Optimal dilution of this antibody should be experimentally determined.

Images

MEF2C Antibody (OT11H5) [mFluor Violet 610 SE] [NBP2-72627MFV610] - Vial of mFluor Violet 610 conjugated antibody. mFluor Violet 610 is optimally excited at 421 nm by the Violet laser (405 nm) and has an emission maximum of 613 nm.





Novus Biologicals USA

10730 E. Briarwood Avenue
Centennial, CO 80112
USA
Phone: 303.730.1950
Toll Free: 1.888.506.6887
Fax: 303.730.1966
nb-customerservice@bio-techne.com

Bio-Techne Canada

21 Canmotor Ave
Toronto, ON M8Z 4E6
Canada
Phone: 905.827.6400
Toll Free: 855.668.8722
Fax: 905.827.6402
canada.inquires@bio-techne.com

Bio-Techne Ltd

19 Barton Lane
Abingdon Science Park
Abingdon, OX14 3NB, United Kingdom
Phone: (44) (0) 1235 529449
Free Phone: 0800 37 34 15
Fax: (44) (0) 1235 533420
info.EMEA@bio-techne.com

General Contact Information

www.novusbio.com
Technical Support: nb-technical@bio-techne.com
Orders: nb-customerservice@bio-techne.com
General: novus@novusbio.com

Products Related to NBP2-72627MFV610

H00004208-P01-2ug	Recombinant Human MEF2C GST (N-Term) Protein
DVE00	VEGF [HRP]
NBL1-12999	MEF2C Overexpression Lysate
314-BP-010	BMP-4 [Unconjugated]

Limitations

This product is for research use only and is not approved for use in humans or in clinical diagnosis. Primary Antibodies are guaranteed for 1 year from date of receipt.

For more information on our 100% guarantee, please visit www.novusbio.com/guarantee

Earn gift cards/discounts by submitting a review: www.novusbio.com/reviews/submit/NBP2-72627MFV610

Earn gift cards/discounts by submitting a publication using this product:
www.novusbio.com/publications

