

# Product Datasheet

## ATPB Antibody (OTI4E5) - Azide and BSA Free NBP2-70224

Unit Size: 100 ug

Store at -20C. Avoid freeze-thaw cycles.

[www.novusbio.com](http://www.novusbio.com)



[technical@novusbio.com](mailto:technical@novusbio.com)

Protocols, Publications, Related Products, Reviews, Research Tools and Images at:  
[www.novusbio.com/NBP2-70224](http://www.novusbio.com/NBP2-70224)

Updated 10/23/2024 v.20.1

Earn rewards for product  
reviews and publications.

Submit a publication at [www.novusbio.com/publications](http://www.novusbio.com/publications)

Submit a review at [www.novusbio.com/reviews/destination/NBP2-70224](http://www.novusbio.com/reviews/destination/NBP2-70224)



**NBP2-70224**

ATPB Antibody (OTI4E5) - Azide and BSA Free

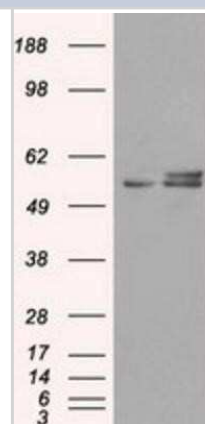
Product Information	
Unit Size	100 ug
Concentration	LYOPH mg/ml
Storage	Store at -20C. Avoid freeze-thaw cycles.
Clonality	Monoclonal
Clone	OTI4E5
Preservative	No Preservative
Reconstitution Instructions	we recommend adding 100uL distilled water to a final antibody concentration of about 1 mg/mL. To use this carrier-free antibody for conjugation experiment, we strongly recommend performing another round of desalting process.
Isotype	IgG2a
Purity	Immunogen affinity purified
Buffer	Lyophilized from PBS (pH 7.3) with 8% Trehalose
Target Molecular Weight	56.6 kDa

Product Description	
Host	Mouse
Gene ID	506
Gene Symbol	ATP5F1B
Species	Human, Rat, Canine, Monkey, Primate
Immunogen	Full length human recombinant protein of human ATP5B (NP_001677) produced in HEK293T cell.

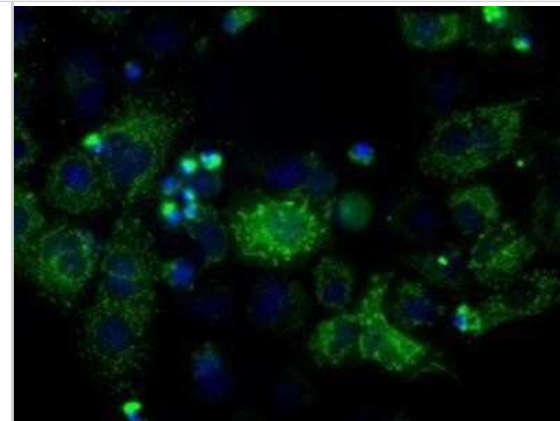
Product Application Details	
Applications	Western Blot, Flow Cytometry, Immunocytochemistry/ Immunofluorescence, Immunohistochemistry, CyTOF-ready
Recommended Dilutions	Western Blot 1:1000, Flow Cytometry 1:100, Immunohistochemistry, Immunocytochemistry/ Immunofluorescence 1:100, CyTOF-ready

**Images**

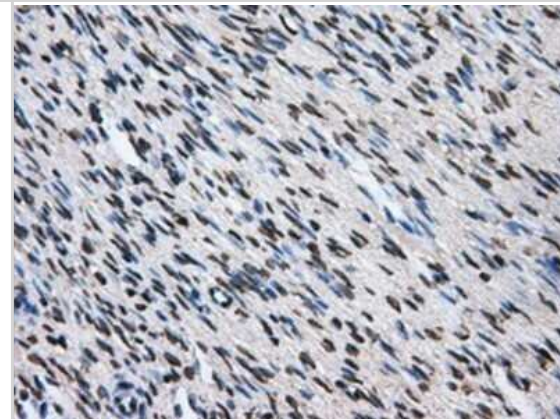
Western Blot: ATPB Antibody (OTI4E5) - Azide and BSA Free [NBP2-70224] - HEK293T cells were transfected with the pCMV6-ENTRY control (Left lane) or pCMV6-ENTRY ATPB (Right lane) cDNA for 48 hrs and lysed. Equivalent amounts of cell lysates (5 ug per lane) were separated by SDS-PAGE and immunoblotted with anti-ATPB.



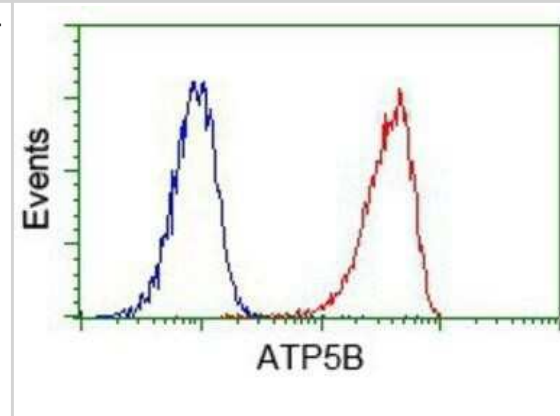
Immunocytochemistry/Immunofluorescence: ATPB Antibody (OTI4E5) - Azide and BSA Free [NBP2-70224] - Staining of COS7 cells transiently transfected by pCMV6-ENTRY ATPB.



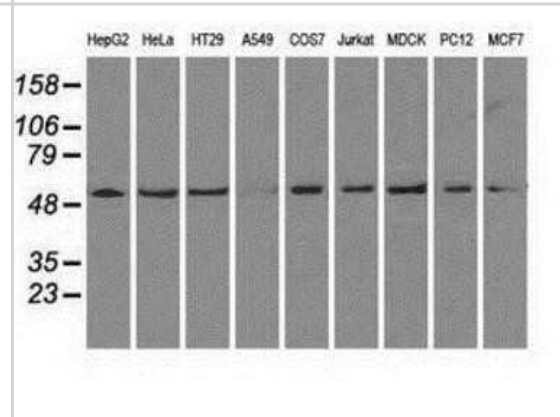
Immunohistochemistry: ATPB Antibody (OTI4E5) - Azide and BSA Free [NBP2-70224] - Staining of paraffin-embedded Ovary tissue using anti-ATPB mouse monoclonal antibody.



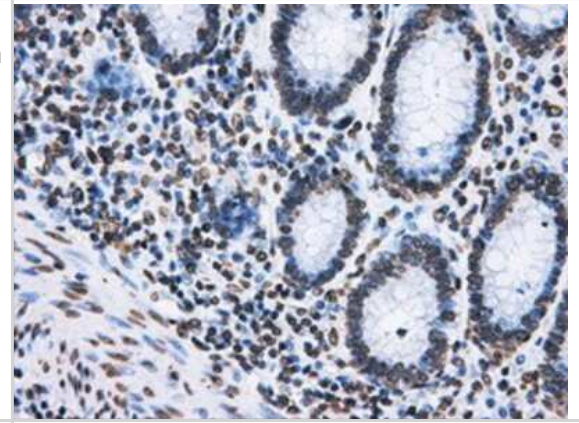
Flow Cytometry: ATPB Antibody (OTI4E5) - Azide and BSA Free [NBP2-70224] - Analysis of Jurkat cells, using anti-ATPB antibody, (Red) compared to a nonspecific negative control antibody (Blue).



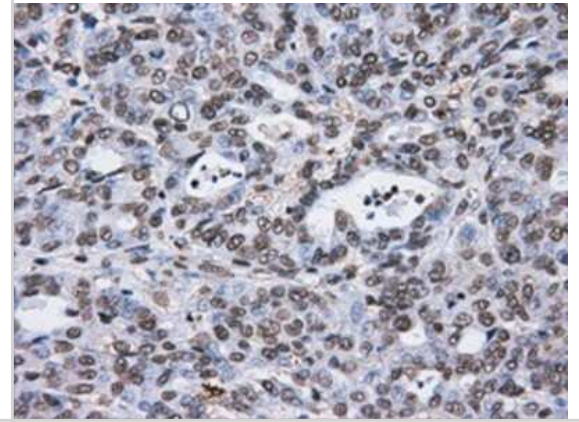
Western Blot: ATPB Antibody (OTI4E5) - Azide and BSA Free [NBP2-70224] - Analysis of extracts (35ug) from 9 different cell lines by using anti-ATPB monoclonal antibody.



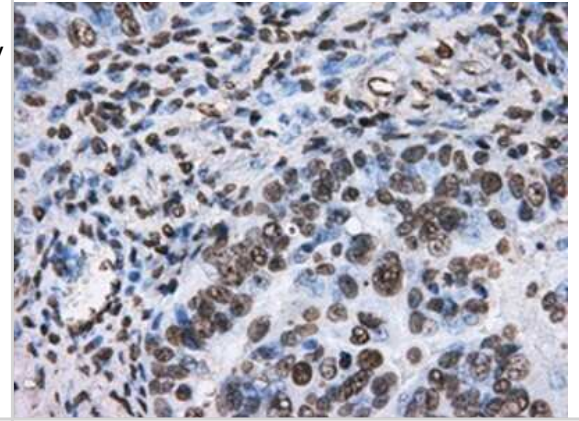
Immunohistochemistry: ATPB Antibody (OTI4E5) - Azide and BSA Free [NBP2-70224] - Staining of paraffin-embedded Adenocarcinoma of colon tissue using anti-ATPB mouse monoclonal antibody.



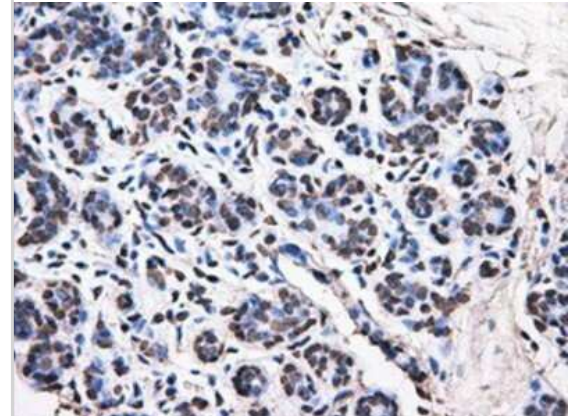
Immunohistochemistry: ATPB Antibody (OTI4E5) - Azide and BSA Free [NBP2-70224] - Staining of paraffin-embedded Adenocarcinoma of endometrium tissue using anti-ATPB mouse monoclonal antibody.



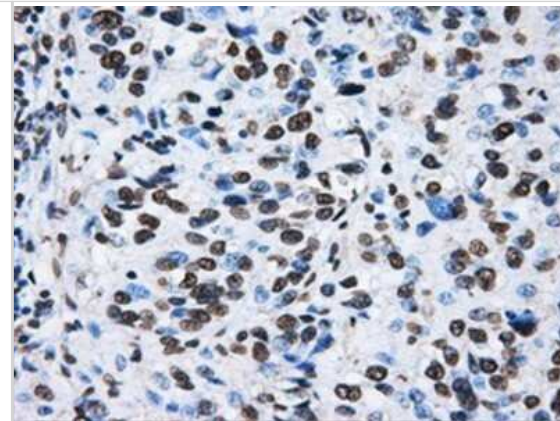
Immunohistochemistry: ATPB Antibody (OTI4E5) - Azide and BSA Free [NBP2-70224] - Staining of paraffin-embedded Adenocarcinoma of ovary tissue using anti-ATPB mouse monoclonal antibody.



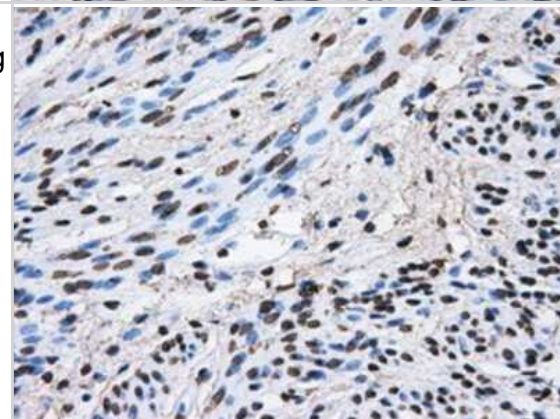
Immunohistochemistry: ATPB Antibody (OTI4E5) - Azide and BSA Free [NBP2-70224] - Staining of paraffin-embedded breast tissue using anti-ATPB mouse monoclonal antibody.



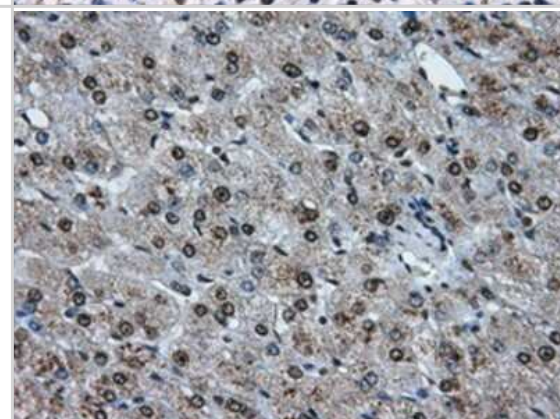
Immunohistochemistry: ATPB Antibody (OTI4E5) - Azide and BSA Free [NBP2-70224] - Staining of paraffin-embedded Carcinoma of bladder tissue using anti-ATPB mouse monoclonal antibody.



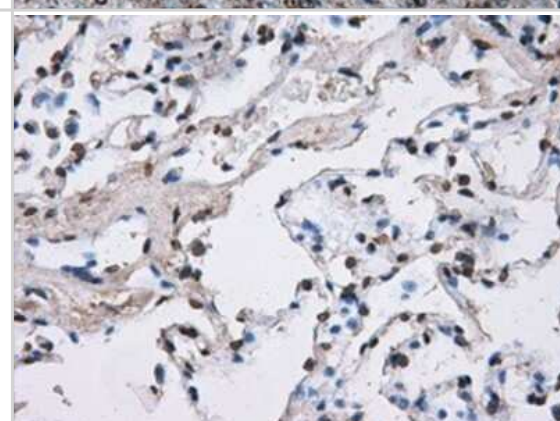
Immunohistochemistry: ATPB Antibody (OTI4E5) - Azide and BSA Free [NBP2-70224] - Staining of paraffin-embedded endometrium tissue using anti-ATPB mouse monoclonal antibody.



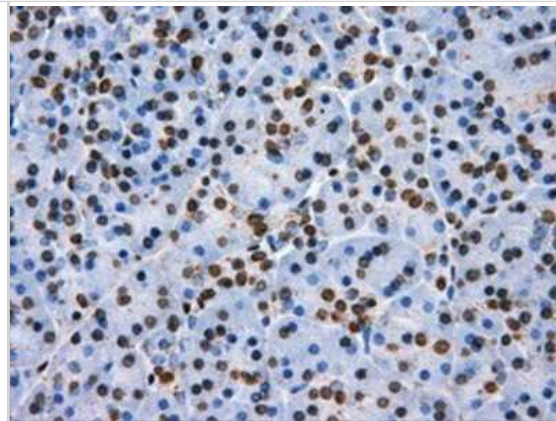
Immunohistochemistry: ATPB Antibody (OTI4E5) - Azide and BSA Free [NBP2-70224] - Staining of paraffin-embedded liver tissue using anti-ATPB mouse monoclonal antibody.



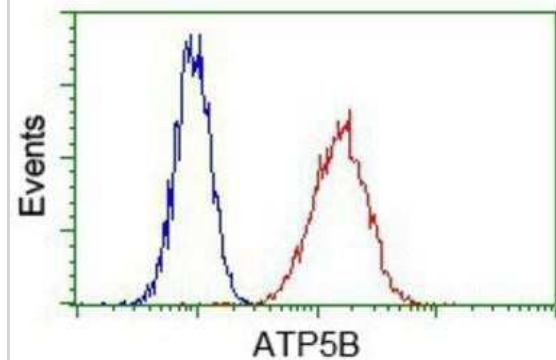
Immunohistochemistry: ATPB Antibody (OTI4E5) - Azide and BSA Free [NBP2-70224] - Staining of paraffin-embedded lung tissue using anti-ATPB mouse monoclonal antibody.



Immunohistochemistry: ATPB Antibody (OTI4E5) - Azide and BSA Free [NBP2-70224] - Staining of paraffin-embedded pancreas tissue using anti-ATPB mouse monoclonal antibody.



Flow Cytometry: ATPB Antibody (OTI4E5) - Azide and BSA Free [NBP2-70224] - Analysis of HeLa cells, using anti-ATPB antibody, (Red) compared to a nonspecific negative control antibody (Blue).





### **Novus Biologicals USA**

10730 E. Briarwood Avenue  
Centennial, CO 80112  
USA  
Phone: 303.730.1950  
Toll Free: 1.888.506.6887  
Fax: 303.730.1966  
nb-customerservice@bio-techne.com

### **Bio-Techne Canada**

21 Canmotor Ave  
Toronto, ON M8Z 4E6  
Canada  
Phone: 905.827.6400  
Toll Free: 855.668.8722  
Fax: 905.827.6402  
canada.inquires@bio-techne.com

### **Bio-Techne Ltd**

19 Barton Lane  
Abingdon Science Park  
Abingdon, OX14 3NB, United Kingdom  
Phone: (44) (0) 1235 529449  
Free Phone: 0800 37 34 15  
Fax: (44) (0) 1235 533420  
info.EMEA@bio-techne.com

### **General Contact Information**

www.novusbio.com  
Technical Support: nb-technical@bio-techne.com  
Orders: nb-customerservice@bio-techne.com  
General: novus@novusbio.com

### **Products Related to NBP2-70224**

---

HAF007	Goat anti-Mouse IgG Secondary Antibody [HRP]
NB720-B	Rabbit anti-Mouse IgG (H+L) Secondary Antibody [Biotin]
NBP1-96778	Mouse IgG2a Isotype Control (M2A)
H00000506-P01-10ug	Recombinant Human ATPB GST (N-Term) Protein

---

### **Limitations**

This product is for research use only and is not approved for use in humans or in clinical diagnosis. Primary Antibodies are guaranteed for 1 year from date of receipt.

For more information on our 100% guarantee, please visit [www.novusbio.com/guarantee](http://www.novusbio.com/guarantee)

Earn gift cards/discounts by submitting a review: [www.novusbio.com/reviews/submit/NBP2-70224](http://www.novusbio.com/reviews/submit/NBP2-70224)

Earn gift cards/discounts by submitting a publication using this product:  
[www.novusbio.com/publications](http://www.novusbio.com/publications)

