

Product Datasheet

G-substrate Antibody - BSA Free NBP2-68949

Unit Size: 100 ul

Store at 4C short term. Aliquot and store at -20C long term. Avoid freeze-thaw cycles.

www.novusbio.com



technical@novusbio.com

Protocols, Publications, Related Products, Reviews, Research Tools and Images at:
www.novusbio.com/NBP2-68949

Updated 2/23/2025 v.20.1

Earn rewards for product
reviews and publications.

Submit a publication at www.novusbio.com/publications

Submit a review at www.novusbio.com/reviews/destination/NBP2-68949



NBP2-68949

G-substrate Antibody - BSA Free

Product Information

Unit Size	100 ul
Concentration	Concentrations vary lot to lot. See vial label for concentration. If unlisted please contact technical services.
Storage	Store at 4C short term. Aliquot and store at -20C long term. Avoid freeze-thaw cycles.
Clonality	Polyclonal
Preservative	0.02% Sodium Azide
Isotype	IgG
Purity	Protein A purified
Buffer	PBS (pH 7.2) and 40% Glycerol

Product Description

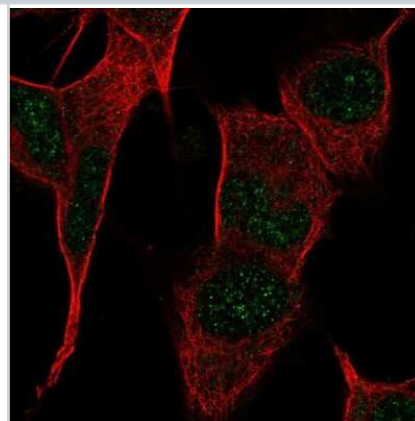
Host	Rabbit
Gene ID	10842
Gene Symbol	PPP1R17
Species	Human
Reactivity Notes	Mouse 81%, Rat 81%
Immunogen	This antibody was developed against a recombinant protein corresponding to amino acids: PPFIPGVFSEHLIKRYDVQERHPKGMIPVLHNTDLEQKKPRRKDTPALHMS

Product Application Details

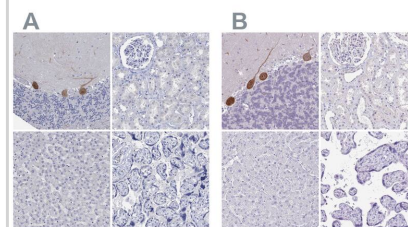
Applications	Immunocytochemistry/ Immunofluorescence
Recommended Dilutions	Immunocytochemistry/ Immunofluorescence 0.25-2 ug/ml
Application Notes	Recommended conditions: Fixation/Permeabilization: PFA/Triton X-100

Images

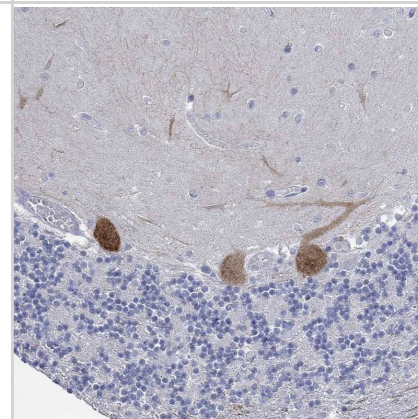
Immunocytochemistry/Immunofluorescence: G-substrate Antibody [NBP2-68949] - Staining of human cell line SH-SY5Y shows localization to nucleoplasm.



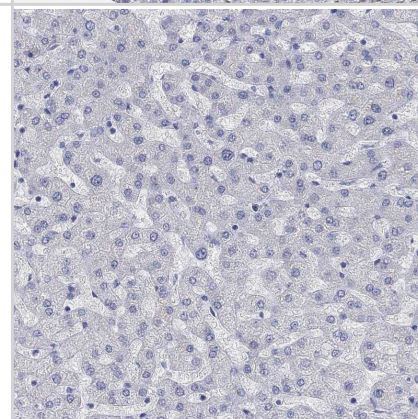
Staining of human cerebellum, kidney, liver and placenta using NBP2-68949 (A) shows similar protein distribution across tissues to independent antibody NBP2-13800 (B).



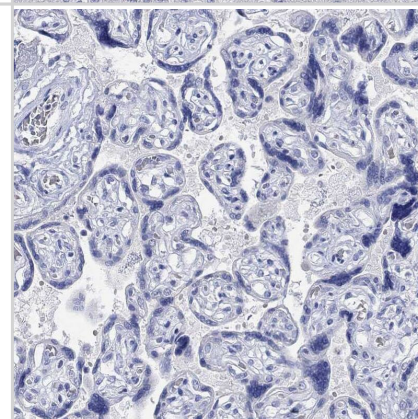
Staining of human cerebellum shows strong cytoplasmic positivity in Purkinje cells.



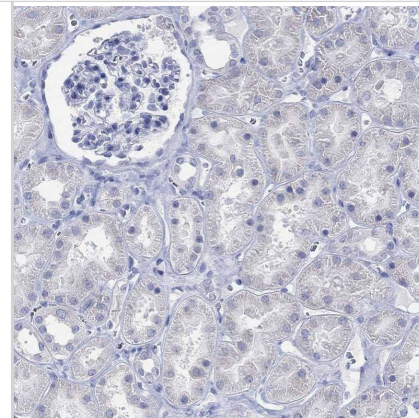
Staining of human liver shows no positivity in hepatocytes as expected.



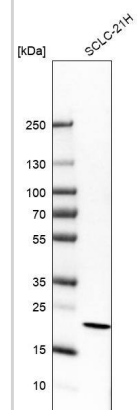
Staining of human placenta shows no positivity in trophoblastic cells as expected.



Staining of human kidney shows no positivity in cells in tubules as expected.



Analysis in human cell line SCLC-21H.





Novus Biologicals USA

10730 E. Briarwood Avenue
Centennial, CO 80112
USA
Phone: 303.730.1950
Toll Free: 1.888.506.6887
Fax: 303.730.1966
nb-customerservice@bio-techne.com

Bio-Techne Canada

21 Canmotor Ave
Toronto, ON M8Z 4E6
Canada
Phone: 905.827.6400
Toll Free: 855.668.8722
Fax: 905.827.6402
canada.inquires@bio-techne.com

Bio-Techne Ltd

19 Barton Lane
Abingdon Science Park
Abingdon, OX14 3NB, United Kingdom
Phone: (44) (0) 1235 529449
Free Phone: 0800 37 34 15
Fax: (44) (0) 1235 533420
info.EMEA@bio-techne.com

General Contact Information

www.novusbio.com
Technical Support: nb-technical@bio-techne.com
Orders: nb-customerservice@bio-techne.com
General: novus@novusbio.com

Products Related to NBP2-68949

NBP2-68949PEP	G-substrate Recombinant Protein Antigen
HAF008	Goat anti-Rabbit IgG Secondary Antibody [HRP]
NB7160	Goat anti-Rabbit IgG (H+L) Secondary Antibody [HRP]
NBP2-24891	Rabbit IgG Isotype Control

Limitations

This product is for research use only and is not approved for use in humans or in clinical diagnosis. Primary Antibodies are guaranteed for 1 year from date of receipt.

For more information on our 100% guarantee, please visit www.novusbio.com/guarantee

Earn gift cards/discounts by submitting a review: www.novusbio.com/reviews/submit/NBP2-68949

Earn gift cards/discounts by submitting a publication using this product:
www.novusbio.com/publications

