

Product Datasheet

IGSF1 Antibody - BSA Free

NBP2-68582

Unit Size: 100 ul

Store at 4C short term. Aliquot and store at -20C long term. Avoid freeze-thaw cycles.

www.novusbio.com



technical@novusbio.com

Protocols, Publications, Related Products, Reviews, Research Tools and Images at:
www.novusbio.com/NBP2-68582

Updated 2/23/2025 v.20.1

Earn rewards for product
reviews and publications.

Submit a publication at www.novusbio.com/publications

Submit a review at www.novusbio.com/reviews/destination/NBP2-68582



NBP2-68582

IGSF1 Antibody - BSA Free

Product Information

Unit Size	100 ul
Concentration	Concentrations vary lot to lot. See vial label for concentration. If unlisted please contact technical services.
Storage	Store at 4C short term. Aliquot and store at -20C long term. Avoid freeze-thaw cycles.
Clonality	Polyclonal
Preservative	0.02% Sodium Azide
Isotype	IgG
Purity	Protein A purified
Buffer	PBS (pH 7.2) and 40% Glycerol

Product Description

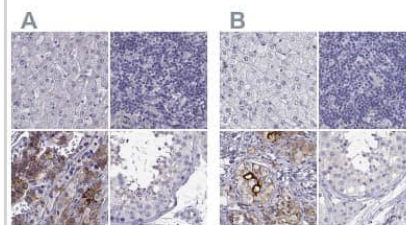
Host	Rabbit
Gene ID	3547
Gene Symbol	IGSF1
Species	Human
Reactivity Notes	Rat 88%
Immunogen	This antibody was developed against a recombinant protein corresponding to amino acids: SRISSKFLLLKDKTQMTWIRPSHKTFQVSFLIGALTESNAGLYRCCYWKETGWS KPSKVLELEAPGQLPKPIFWIQAETPALPGCNVNILCHGWLQDLVFMFLFKEGYA EPVDYQVPTGTMAIFSIDNLTPEDEGVYICRTHIQM

Product Application Details

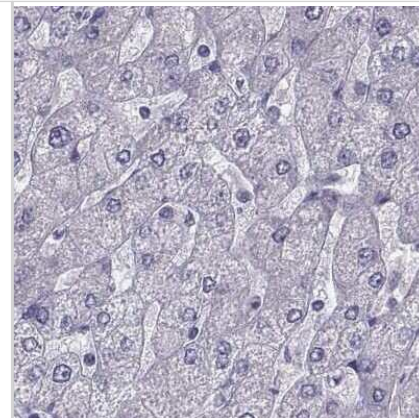
Applications	Immunohistochemistry, Immunohistochemistry-Paraffin
Recommended Dilutions	Immunohistochemistry 1:50 - 1:200, Immunohistochemistry-Paraffin 1:50 - 1:200
Application Notes	Recommended conditions for IHC, Retrieval method: HIER pH6

Images

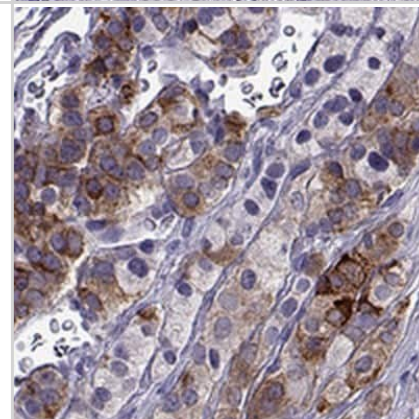
Immunohistochemistry-Paraffin: IGSF1 Antibody [NBP2-68582] - Staining of human liver, lymph node, pituitary gland and testis using Anti-IGSF1 antibody NBP2-68582 (A) shows similar protein distribution across tissues to independent antibody NBP2-14119 (B).



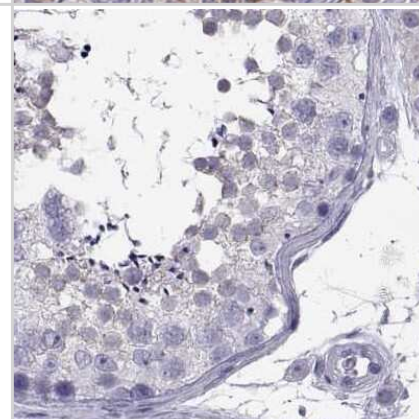
Immunohistochemistry-Paraffin: IGSF1 Antibody [NBP2-68582] - Staining of human liver.



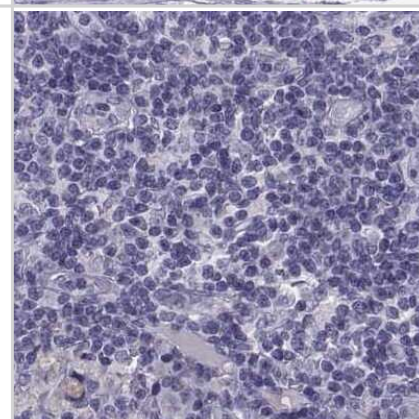
Immunohistochemistry: IGSF1 Antibody [NBP2-68582] - Immunohistochemical staining of human pituitary gland shows strong cytoplasmic positivity in subset of cells in anterior lobe.



Immunohistochemistry-Paraffin: IGSF1 Antibody [NBP2-68582] - Staining of human testis.



Immunohistochemistry-Paraffin: IGSF1 Antibody [NBP2-68582] - Staining of human lymph node.





Novus Biologicals USA

10730 E. Briarwood Avenue
Centennial, CO 80112
USA
Phone: 303.730.1950
Toll Free: 1.888.506.6887
Fax: 303.730.1966
nb-customerservice@bio-techne.com

Bio-Techne Canada

21 Canmotor Ave
Toronto, ON M8Z 4E6
Canada
Phone: 905.827.6400
Toll Free: 855.668.8722
Fax: 905.827.6402
canada.inquires@bio-techne.com

Bio-Techne Ltd

19 Barton Lane
Abingdon Science Park
Abingdon, OX14 3NB, United Kingdom
Phone: (44) (0) 1235 529449
Free Phone: 0800 37 34 15
Fax: (44) (0) 1235 533420
info.EMEA@bio-techne.com

General Contact Information

www.novusbio.com
Technical Support: nb-technical@bio-techne.com
Orders: nb-customerservice@bio-techne.com
General: novus@novusbio.com

Products Related to NBP2-68582

NBP2-68582PEP	IGSF1 Recombinant Protein Antigen
HAF008	Goat anti-Rabbit IgG Secondary Antibody [HRP]
NB7160	Goat anti-Rabbit IgG (H+L) Secondary Antibody [HRP]
NBP2-24891	Rabbit IgG Isotype Control

Limitations

This product is for research use only and is not approved for use in humans or in clinical diagnosis. Primary Antibodies are guaranteed for 1 year from date of receipt.

For more information on our 100% guarantee, please visit www.novusbio.com/guarantee

Earn gift cards/discounts by submitting a review: www.novusbio.com/reviews/submit/NBP2-68582

Earn gift cards/discounts by submitting a publication using this product:
www.novusbio.com/publications

