

# Product Datasheet

## Goat anti-Mouse IgG2b Secondary Antibody [Alkaline Phosphatase] (Pre-adsorbed) NBP2-68513

Unit Size: 1 ml

Store at 4C short term. Aliquot and store at -20C long term. Avoid freeze-thaw cycles.

[www.novusbio.com](http://www.novusbio.com)



[technical@novusbio.com](mailto:technical@novusbio.com)

Protocols, Publications, Related Products, Reviews, Research Tools and Images at:  
[www.novusbio.com/NBP2-68513](http://www.novusbio.com/NBP2-68513)

Updated 10/23/2024 v.20.1

Earn rewards for product reviews and publications.

Submit a publication at [www.novusbio.com/publications](http://www.novusbio.com/publications)

Submit a review at [www.novusbio.com/reviews/destination/NBP2-68513](http://www.novusbio.com/reviews/destination/NBP2-68513)



**NBP2-68513**

Goat anti-Mouse IgG2b Secondary Antibody [Alkaline Phosphatase] (Pre-adsorbed)

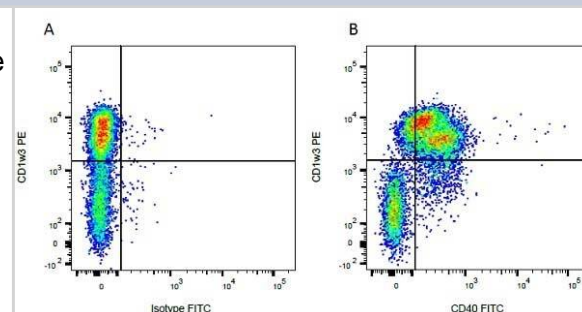
Product Information	
Unit Size	1 ml
Concentration	Please see the vial label for concentration. If unlisted please contact technical services.
Storage	Store at 4C short term. Aliquot and store at -20C long term. Avoid freeze-thaw cycles.
Clonality	Polyclonal
Preservative	<0.1% Sodium Azide
Isotype	IgG
Conjugate	Alkaline Phosphatase
Purity	Affinity purified
Buffer	50mM TRIS, 1mM MgCl2

Product Description	
Host	Goat
Species	Mouse
Specificity/Sensitivity	Goat anti Mouse IgG2b antibody recognizes Mouse IgG2b as has been pre-adsorbed against mouse IgM, IgG1, IgG2a, IgG3 and IgA, pooled human sera and purified human paraproteins. The antibody shows minimal cross-reactivity with human immunoglobulins.
Immunogen	Mouse IgG2b paraproteins

Product Application Details	
Applications	Western Blot, ELISA, Immunohistochemistry, Immunohistochemistry-Frozen, Immunohistochemistry-Paraffin
Recommended Dilutions	Western Blot, ELISA 1:2000 - 1:4000, Immunohistochemistry, Immunohistochemistry-Paraffin, Immunohistochemistry-Frozen

**Images**

Flow Cytometry: Goat anti-Mouse IgG2b Secondary Antibody [Alkaline Phosphatase] - (Pre-adsorbed) [NBP2-68513] - Figure A. Purified mouse anti bovine CD1w3 detected with goat anti mouse IgG2b RPE and FITC conjugated mouse IgG1 isotype control. Figure B. Purified mouse anti bovine CD1w3 detected with goat anti mouse IgG2b RPE and FITC conjugated mouse anti bovine CD40. All experiments performed on red cell lysed bovine blood gated on mononuclear cells.





### **Novus Biologicals USA**

10730 E. Briarwood Avenue  
Centennial, CO 80112  
USA  
Phone: 303.730.1950  
Toll Free: 1.888.506.6887  
Fax: 303.730.1966  
nb-customerservice@bio-techne.com

### **Bio-Techne Canada**

21 Canmotor Ave  
Toronto, ON M8Z 4E6  
Canada  
Phone: 905.827.6400  
Toll Free: 855.668.8722  
Fax: 905.827.6402  
canada.inquires@bio-techne.com

### **Bio-Techne Ltd**

19 Barton Lane  
Abingdon Science Park  
Abingdon, OX14 3NB, United Kingdom  
Phone: (44) (0) 1235 529449  
Free Phone: 0800 37 34 15  
Fax: (44) (0) 1235 533420  
info.EMEA@bio-techne.com

### **General Contact Information**

www.novusbio.com  
Technical Support: nb-technical@bio-techne.com  
Orders: nb-customerservice@bio-techne.com  
General: novus@novusbio.com

### **Products Related to NBP2-68513**

---

MAB004	Mouse IgG2b Isotype Control (20116) [Unconjugated]
--------	--

---

#### **Limitations**

This product is for research use only and is not approved for use in humans or in clinical diagnosis. Secondary Antibodies are guaranteed for 1 year from date of receipt.

For more information on our 100% guarantee, please visit [www.novusbio.com/guarantee](http://www.novusbio.com/guarantee)

Earn gift cards/discounts by submitting a review: [www.novusbio.com/reviews/submit/NBP2-68513](http://www.novusbio.com/reviews/submit/NBP2-68513)

Earn gift cards/discounts by submitting a publication using this product:  
[www.novusbio.com/publications](http://www.novusbio.com/publications)

