

Product Datasheet

IRF3 Antibody (SD2062) NBP2-67741

Unit Size: 100 ul

Store at 4C short term. Aliquot and store at -20C long term. Avoid freeze-thaw cycles.

www.novusbio.com



technical@novusbio.com

Publications: 2

Protocols, Publications, Related Products, Reviews, Research Tools and Images at:
www.novusbio.com/NBP2-67741

Updated 10/23/2024 v.20.1

Earn rewards for product
reviews and publications.

Submit a publication at www.novusbio.com/publications

Submit a review at www.novusbio.com/reviews/destination/NBP2-67741



NBP2-67741

IRF3 Antibody (SD2062)

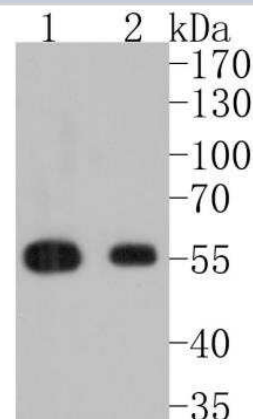
Product Information	
Unit Size	100 ul
Concentration	1 mg/ml
Storage	Store at 4C short term. Aliquot and store at -20C long term. Avoid freeze-thaw cycles.
Clonality	Monoclonal
Clone	SD2062
Preservative	0.05% Sodium Azide
Isotype	IgG
Purity	Protein A purified
Buffer	TBS (pH7.4), 0.05% BSA, 40% Glycerol

Product Description	
Host	Rabbit
Gene ID	3661
Gene Symbol	IRF3
Species	Human, Mouse, Rat
Immunogen	Synthetic peptide within Human IRF3 aa 71-120 / 427. (SwissProt: Q14653 Human; SwissProt: P70671 Mouse)

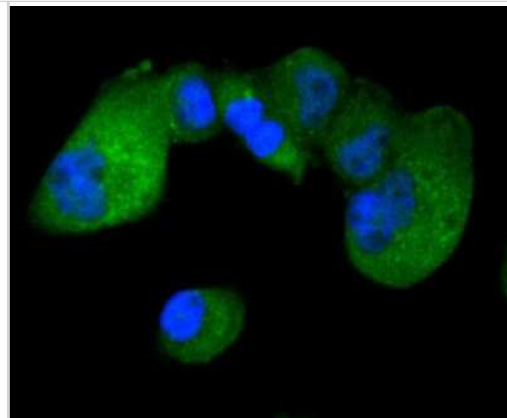
Product Application Details	
Applications	Western Blot, Flow Cytometry, Immunocytochemistry/ Immunofluorescence, Immunohistochemistry, Immunohistochemistry-Paraffin
Recommended Dilutions	Western Blot 1:500-1:5000, Flow Cytometry 1:50-1:100, Immunohistochemistry, Immunocytochemistry/ Immunofluorescence 1:50-1:200, Immunohistochemistry-Paraffin 1:50-1:200

Images

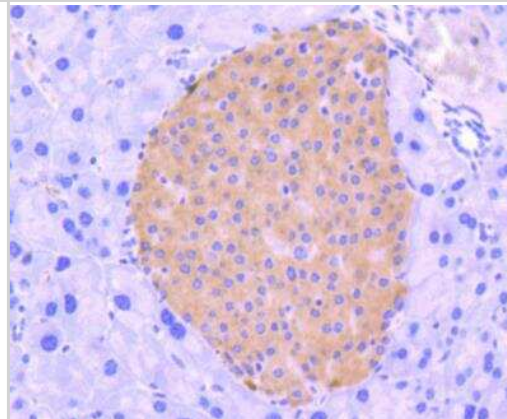
Western Blot: IRF3 Antibody (SD2062) [NBP2-67741] - Analysis of IRF3 on different lysates. Proteins were transferred to a PVDF membrane and blocked with 5% BSA in PBS for 1 hour at room temperature. The primary antibody (1/500) was used in 5% BSA at room temperature for 2 hours. Goat Anti-Rabbit IgG - HRP Secondary Antibody at 1:5,000 dilution was used for 1 hour at room temperature. Positive control: Lane 1: Jurkat cell lysate Lane 2: Hela cell lysate



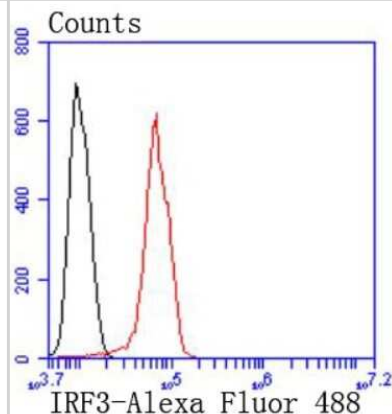
Immunocytochemistry/Immunofluorescence: IRF3 Antibody (SD2062) [NBP2-67741] - Staining IRF3 in PANC-1 cells (green). The nuclear counter stain is DAPI (blue). Cells were fixed in paraformaldehyde, permeabilised with 0.25% Triton X100/PBS.



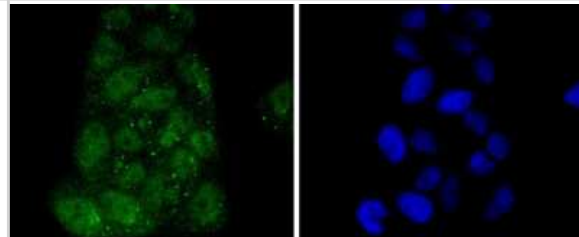
Immunohistochemistry-Paraffin: IRF3 Antibody (SD2062) [NBP2-67741] - Analysis of paraffin-embedded mouse pancreas tissue using anti-IRF3 antibody. Counter stained with hematoxylin.



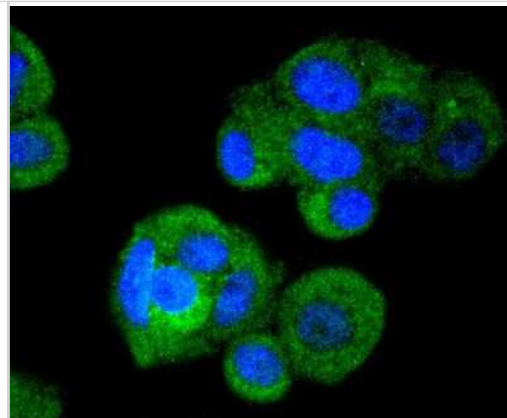
Flow Cytometry: IRF3 Antibody (SD2062) [NBP2-67741] - Flow cytometric analysis of IRF3 was done on Hela cells. The cells were fixed, permeabilized and stained with the primary antibody (1/50) (red). After incubation of the primary antibody at room temperature for an hour, the cells were stained with a Alexa Fluor 488-conjugated Goat anti-Rabbit IgG Secondary antibody at 1/1000 dilution for 30 minutes. Unlabeled sample was used as a control (cells without incubation with primary antibody; black).



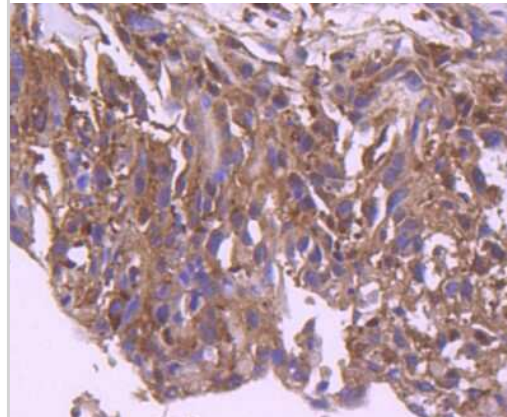
Immunocytochemistry/Immunofluorescence: IRF3 Antibody (SD2062) [NBP2-67741] - Staining IRF3 in Hela cells (green). The nuclear counter stain is DAPI (blue). Cells were fixed in paraformaldehyde, permeabilised with 0.25% Triton X100/PBS.



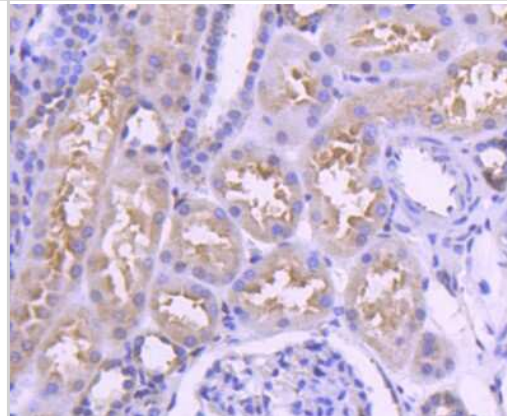
Immunocytochemistry/Immunofluorescence: IRF3 Antibody (SD2062) [NBP2-67741] - Staining IRF3 in MCF-7 cells (green). The nuclear counter stain is DAPI (blue). Cells were fixed in paraformaldehyde, permeabilised with 0.25% Triton X100/PBS.



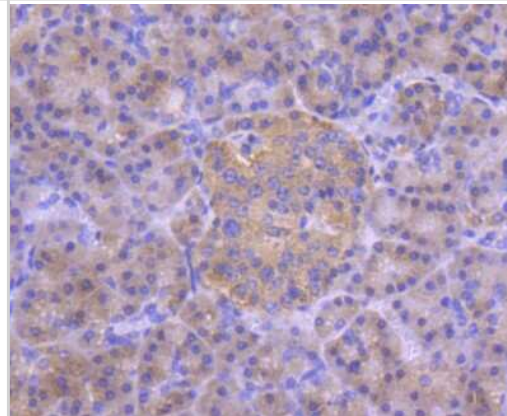
Immunohistochemistry-Paraffin: IRF3 Antibody (SD2062) [NBP2-67741] - Analysis of paraffin-embedded human breast carcinoma tissue using anti-IRF3 antibody. Counter stained with hematoxylin.



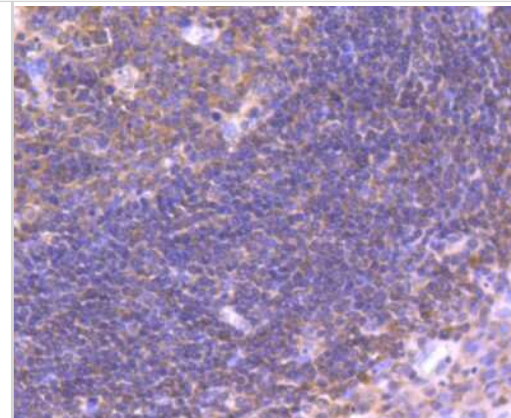
Immunohistochemistry-Paraffin: IRF3 Antibody (SD2062) [NBP2-67741] - Analysis of paraffin-embedded human kidney tissue using anti-IRF3 antibody. Counter stained with hematoxylin.



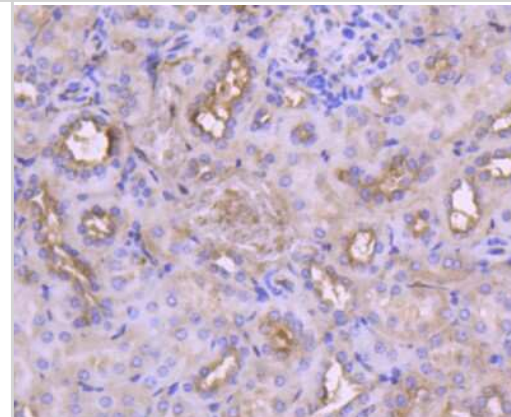
Immunohistochemistry-Paraffin: IRF3 Antibody (SD2062) [NBP2-67741] - Analysis of paraffin-embedded human pancreas tissue using anti-IRF3 antibody. Counter stained with hematoxylin.



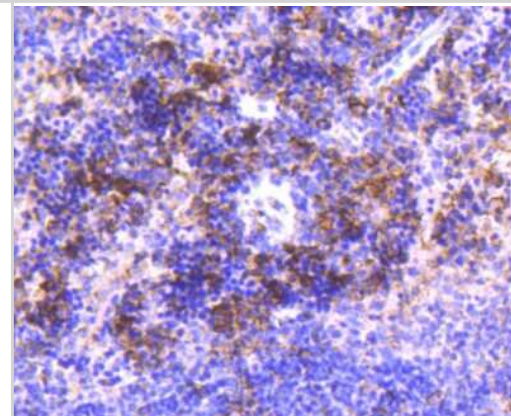
Immunohistochemistry-Paraffin: IRF3 Antibody (SD2062) [NBP2-67741]
- Analysis of paraffin-embedded human tonsil tissue using anti-IRF3 antibody. Counter stained with hematoxylin.



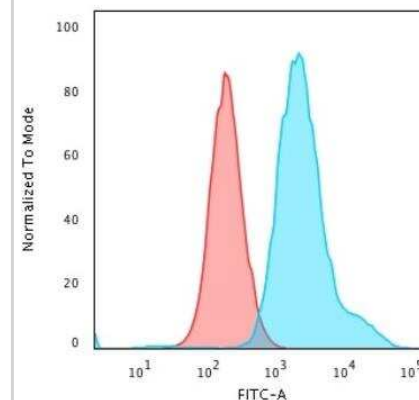
Immunohistochemistry-Paraffin: IRF3 Antibody (SD2062) [NBP2-67741]
- Analysis of paraffin-embedded mouse kidney tissue using anti-IRF3 antibody. Counter stained with hematoxylin.



Immunohistochemistry-Paraffin: IRF3 Antibody (SD2062) [NBP2-67741]
- Analysis of paraffin-embedded mouse spleen tissue using anti-IRF3 antibody. Counter stained with hematoxylin.



Flow Cytometry: IRF3 Antibody (SD2062) [NBP2-67741] - Analysis of HeLa cells with IRF3 antibody at 1/50 dilution (red) compared with an unlabelled control (cells without incubation with primary antibody; black). Alexa Fluor 488-conjugated goat anti rabbit IgG was used as the secondary antibody.



Publications

R Ko, J Seo, H Park, N Lee, SY Lee Pim1 promotes IFN-beta production by interacting with IRF3 *Experimental & Molecular Medicine*, 2022-11-29;54(11):2092-2103. 2022-11-29 [PMID: 36446848]

Glou D, Vilmen G, Perdiz D et al. Essential role of hyperacetylated microtubules in innate immunity escape orchestrated by the EBV-encoded BHRF1 protein *PLoS pathogens* 2022-03-01 [PMID: 35275978]



Novus Biologicals USA

10730 E. Briarwood Avenue
Centennial, CO 80112
USA

Phone: 303.730.1950

Toll Free: 1.888.506.6887

Fax: 303.730.1966

nb-customerservice@bio-techne.com

Bio-Techne Canada

21 Canmotor Ave
Toronto, ON M8Z 4E6
Canada

Phone: 905.827.6400

Toll Free: 855.668.8722

Fax: 905.827.6402

canada.inquires@bio-techne.com

Bio-Techne Ltd

19 Barton Lane
Abingdon Science Park
Abingdon, OX14 3NB, United Kingdom

Phone: (44) (0) 1235 529449

Free Phone: 0800 37 34 15

Fax: (44) (0) 1235 533420

info.EMEA@bio-techne.com

General Contact Information

www.novusbio.com

Technical Support: nb-technical@bio-techne.com

Orders: nb-customerservice@bio-techne.com

General: novus@novusbio.com

Products Related to NBP2-67741

HAF008	Goat anti-Rabbit IgG Secondary Antibody [HRP]
NB7160	Goat anti-Rabbit IgG (H+L) Secondary Antibody [HRP]
NBP2-24891	Rabbit IgG Isotype Control
NBC1-18469	Recombinant Human IRF3 Protein

Limitations

This product is for research use only and is not approved for use in humans or in clinical diagnosis. Primary Antibodies are guaranteed for 1 year from date of receipt.

For more information on our 100% guarantee, please visit www.novusbio.com/guarantee

Earn gift cards/discounts by submitting a review: www.novusbio.com/reviews/submit/NBP2-67741

Earn gift cards/discounts by submitting a publication using this product:
www.novusbio.com/publications

