

Product Datasheet

CCR2 Antibody (SN707) NBP2-67700

Unit Size: 100 ul

Store at 4C short term. Aliquot and store at -20C long term. Avoid freeze-thaw cycles.

www.novusbio.com



technical@novusbio.com

Publications: 5

Protocols, Publications, Related Products, Reviews, Research Tools and Images at:
www.novusbio.com/NBP2-67700

Updated 10/23/2024 v.20.1

Earn rewards for product
reviews and publications.

Submit a publication at www.novusbio.com/publications

Submit a review at www.novusbio.com/reviews/destination/NBP2-67700



NBP2-67700

CCR2 Antibody (SN707)

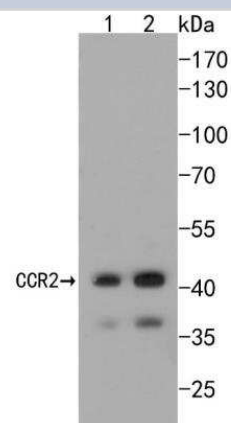
Product Information	
Unit Size	100 ul
Concentration	1 mg/ml
Storage	Store at 4C short term. Aliquot and store at -20C long term. Avoid freeze-thaw cycles.
Clonality	Monoclonal
Clone	SN707
Preservative	0.05% Sodium Azide
Isotype	IgG
Purity	Protein A purified
Buffer	TBS (pH7.4), 0.05% BSA, 40% Glycerol

Product Description	
Host	Rabbit
Gene ID	729230
Gene Symbol	CCR2
Species	Human, Mouse
Immunogen	Synthetic peptide within N-terminal human CCR2. (SwissProt: P41597 Human; SwissProt: P51683 Mouse)

Product Application Details	
Applications	Western Blot, Flow Cytometry, Immunohistochemistry, Immunohistochemistry-Paraffin, Immunoprecipitation
Recommended Dilutions	Western Blot 1:500-1:1000, Flow Cytometry 1:50-1:100, Immunohistochemistry, Immunoprecipitation, Immunohistochemistry-Paraffin 1:50-1:200
Application Notes	IP: Use at an assay dependent concentration.

Images

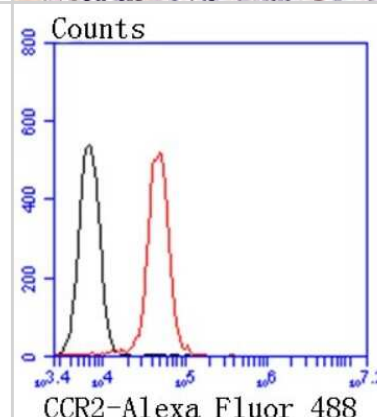
Western Blot: CCR2 Antibody (SN707) [NBP2-67700] - Analysis of CCR2 on different lysates. Proteins were transferred to a PVDF membrane and blocked with 5% BSA in PBS for 1 hour at room temperature. The primary antibody (1/500) was used in 5% BSA at room temperature for 2 hours. Goat Anti-Rabbit IgG - HRP Secondary Antibody at 1:5,000 dilution was used for 1 hour at room temperature. Positive control: Lane 1: Mouse spleen tissue lysate Lane 2: THP-1 cell lysate



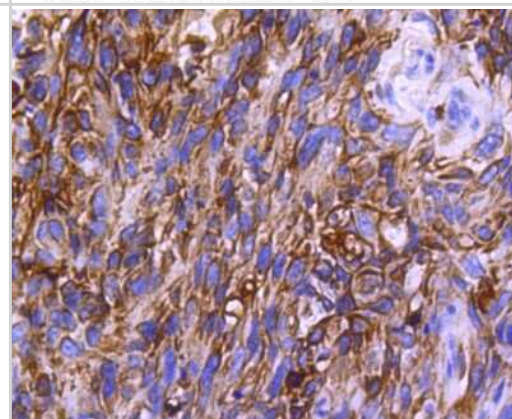
Immunohistochemistry-Paraffin: CCR2 Antibody (SN707) [NBP2-67700]
 - Analysis of paraffin-embedded human esophagus tissue with Rabbit anti-CCR2 antibody washed with ddH₂O and PBS, and then probed with the primary antibody at 1/400 dilution for 1 hour at room temperature. The detection was performed using an HRP conjugated compact polymer system. DAB was used as the chromogen. Tissues were counterstained with hematoxylin and mounted with DPX.



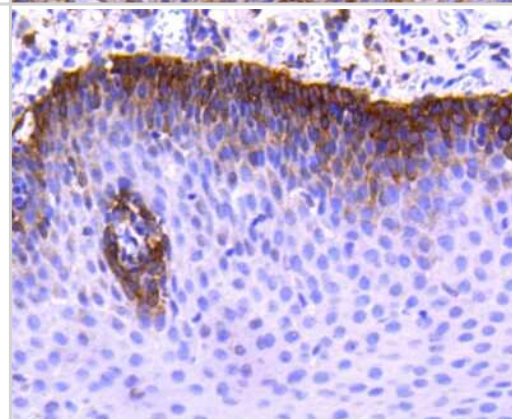
Flow Cytometry: CCR2 Antibody (SN707) [NBP2-67700] - Analysis of K562 cells with CCR2 antibody at 1/50 dilution (red) compared with an unlabelled control (cells without incubation with primary antibody; black). Alexa Fluor 488-conjugated goat anti rabbit IgG was used as the secondary antibody



Immunohistochemistry-Paraffin: CCR2 Antibody (SN707) [NBP2-67700]
 - Analysis of paraffin-embedded human breast carcinoma tissue using anti-CCR2 antibody. Counter stained with hematoxylin.



Immunohistochemistry-Paraffin: CCR2 Antibody (SN707) [NBP2-67700]
 - Analysis of paraffin-embedded human tonsil tissue using anti-CCR2 antibody. Counter stained with hematoxylin.



Publications

J Huang, H Tao, PG Yancey, Z Leuthner, LS May-Zhang, JY Jung, Y Zhang, L Ding, V Amarnath, D Liu, S Collins, SS Davies, MF Linton Scavenging dicarbonyls with 5'-O-pentyl-pyridoxamine increases HDL net cholesterol efflux capacity and attenuates atherosclerosis and insulin resistance Molecular Metabolism, 2022-12-05;67(0):101651. 2022-12-05 [PMID: 36481344]

Obi AT, Sharma SB, Elflin MA et al. Experimental venous thrombus resolution is driven by IL-6 mediated monocyte actions Scientific reports 2023-02-24 [PMID: 36828892] (IHC-P, Mouse)

Details:

Dilution used in IHC-P 1:800

Dowling A, Luke C, Cai Q et al. MODULATION OF IL-6 AND ITS EFFECT ON LATE VEIN WALL INJURY IN A STASIS MOUSE MODEL OF DEEP VEIN THROMBOSIS JVS: Vascular Science 2022-04-01 [PMID: 35647566] (IHC-P, Mouse)

Kim M, Jo H, Kwon Y et al. MiR-154-5p-MCP1 Axis Regulates Allergic Inflammation by Mediating Cellular Interactions Frontiers in Immunology 2021-05-31 [PMID: 34135893] (WB, Mouse)

Gaurav R, Mikuls TR, Thiele GM et al. High-throughput analysis of lung immune cells in a combined murine model of agriculture dust-triggered airway inflammation with rheumatoid arthritis PloS one 2021-02-12 [PMID: 33577605] (IF/IHC, Human)





Novus Biologicals USA

10730 E. Briarwood Avenue
Centennial, CO 80112
USA
Phone: 303.730.1950
Toll Free: 1.888.506.6887
Fax: 303.730.1966
nb-customerservice@bio-techne.com

Bio-Techne Canada

21 Canmotor Ave
Toronto, ON M8Z 4E6
Canada
Phone: 905.827.6400
Toll Free: 855.668.8722
Fax: 905.827.6402
canada.inquires@bio-techne.com

Bio-Techne Ltd

19 Barton Lane
Abingdon Science Park
Abingdon, OX14 3NB, United Kingdom
Phone: (44) (0) 1235 529449
Free Phone: 0800 37 34 15
Fax: (44) (0) 1235 533420
info.EMEA@bio-techne.com

General Contact Information

www.novusbio.com
Technical Support: nb-technical@bio-techne.com
Orders: nb-customerservice@bio-techne.com
General: novus@novusbio.com

Products Related to NBP2-67700

HAF008	Goat anti-Rabbit IgG Secondary Antibody [HRP]
NB7160	Goat anti-Rabbit IgG (H+L) Secondary Antibody [HRP]
NBP2-24891	Rabbit IgG Isotype Control
NBP1-48338PEP	CCR2 Antibody Blocking Peptide

Limitations

This product is for research use only and is not approved for use in humans or in clinical diagnosis. Primary Antibodies are guaranteed for 1 year from date of receipt.

For more information on our 100% guarantee, please visit www.novusbio.com/guarantee

Earn gift cards/discounts by submitting a review: www.novusbio.com/reviews/submit/NBP2-67700

Earn gift cards/discounts by submitting a publication using this product:
www.novusbio.com/publications

