

# Product Datasheet

## Lactate Dehydrogenase A/LDHA Antibody (SU39-06) NBP2-67483

Unit Size: 100 ul

Store at 4C short term. Aliquot and store at -20C long term. Avoid freeze-thaw cycles.

[www.novusbio.com](http://www.novusbio.com)



[technical@novusbio.com](mailto:technical@novusbio.com)

### Publications: 3

Protocols, Publications, Related Products, Reviews, Research Tools and Images at:  
[www.novusbio.com/NBP2-67483](http://www.novusbio.com/NBP2-67483)

Updated 10/23/2024 v.20.1

Earn rewards for product  
reviews and publications.

Submit a publication at [www.novusbio.com/publications](http://www.novusbio.com/publications)

Submit a review at [www.novusbio.com/reviews/destination/NBP2-67483](http://www.novusbio.com/reviews/destination/NBP2-67483)



**NBP2-67483****Lactate Dehydrogenase A/LDHA Antibody (SU39-06)**

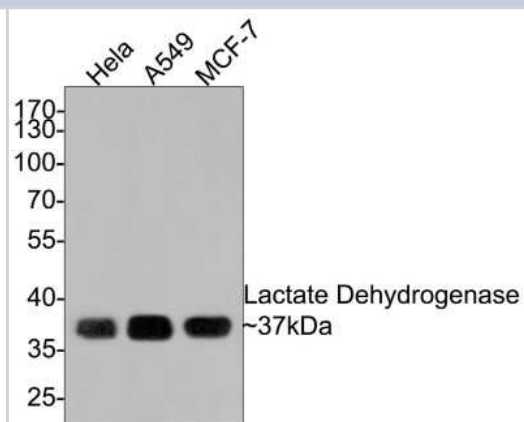
| Product Information |  |
|---------------------|--|
| Unit Size           | 100 ul   |
| Concentration       | 1 mg/ml  |
| Storage             | Store at 4C short term. Aliquot and store at -20C long term. Avoid freeze-thaw cycles. |
| Clonality           | Monoclonal   |
| Clone               | SU39-06  |
| Preservative        | 0.05% Sodium Azide   |
| Isotype             | IgG  |
| Purity              | Protein A purified   |
| Buffer              | TBS (pH7.4), 0.05% BSA, 40% Glycerol   |

| Product Description |  |
|---------------------|--|
| Host                | Rabbit   |
| Gene ID             | 3939   |
| Gene Symbol         | LDHA   |
| Species             | Human, Mouse, Rat, Zebrafish   |
| Immunogen           | Synthetic peptide within human Lactate Dehydrogenase A/LDHA aa 270-310. (SwissProt: P07195 Human; SwissProt: P00338 Human; SwissProt: P16125 Mouse; SwissProt: P06151 Mouse; SwissProt: P42123 Rat; SwissProt: P04642 Rat) |

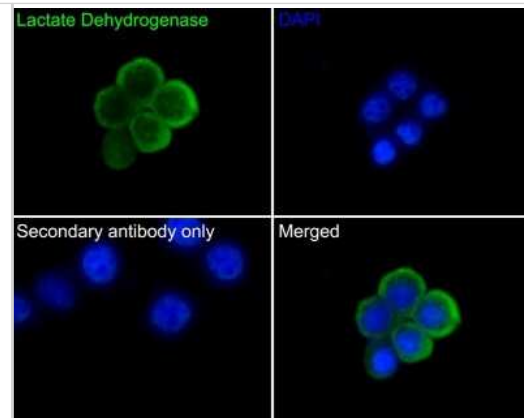
| Product Application Details |  |
|-----------------------------|--|
| Applications                | Western Blot, Flow Cytometry, Immunocytochemistry/ Immunofluorescence, Immunohistochemistry, Immunohistochemistry-Paraffin, Immunoprecipitation  |
| Recommended Dilutions       | Western Blot 1:1000-1:5000, Flow Cytometry 1:50-1:100, Immunohistochemistry, Immunocytochemistry/ Immunofluorescence 1:50-1:200, Immunoprecipitation Use at an assay dependent concentration, Immunohistochemistry-Paraffin 1:200-1:2000 |

**Images**

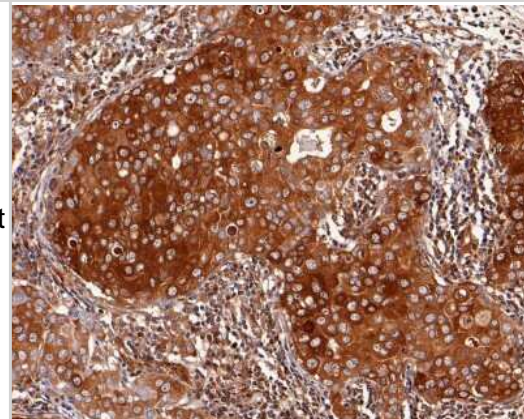
Western Blot: Lactate Dehydrogenase A/LDHA Antibody (SU39-06) [NBP2-67483] - Analysis of Lactate Dehydrogenase on different lysates with Rabbit anti-Lactate Dehydrogenase antibody at 1/1,000 dilution. Lane 1: HeLa cell lysate Lane 2: A549 cell lysate Lane 3: MCF-7 cell lysate Lysates/proteins at 10 ug/Lane. Predicted band size: 37 kDa Observed band size: 37 kDa Exposure time: 1 minute; 10% SDS-PAGE gel. Proteins were transferred to a PVDF membrane and blocked with 5% NFDM/TBST for 1 hour at room temperature. The primary antibody at 1/1,000 dilution was used in 5% NFDM/TBST at room temperature for 2 hours. Goat Anti-Rabbit IgG - HRP Secondary Antibody at 1:300,000 dilution was used for 1 hour at room temperature.



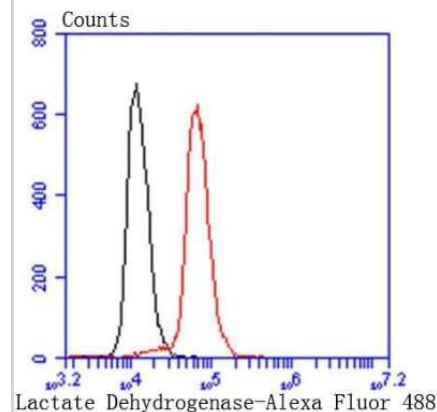
**Immunocytochemistry/Immunofluorescence: Lactate Dehydrogenase A/LDHA Antibody (SU39-06) [NBP2-67483]** - Analysis of LOVO cells labeling Lactate Dehydrogenase with Rabbit anti-Lactate Dehydrogenase A/LDHA antibody (permeabilized with 0.05% Triton X-100 in PBS for 20 minutes, and then blocked with 2% negative goat serum for 30 minutes at room temperature. Cells were then incubated with Rabbit anti-Lactate Dehydrogenase antibody was used as the secondary antibody at 1/1,000 dilution. PBS instead of the primary antibody was used as the secondary antibody only control. Nuclear DNA was labelled in blue with DAPI.



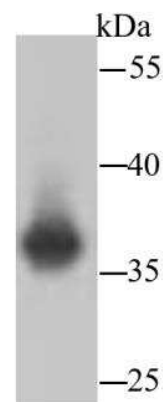
**Immunohistochemistry-Paraffin: Lactate Dehydrogenase A/LDHA Antibody (SU39-06) [NBP2-67483]** - Analysis of paraffin-embedded human breast carcinoma tissue with Rabbit anti-Lactate Dehydrogenase antibody. The section was pre-treated using heat mediated antigen retrieval with Tris-EDTA buffer (pH 9.0) for 20 minutes. The tissues were blocked in 1% BSA for 20 minutes at room temperature, washed with ddH<sub>2</sub>O and PBS, and then probed with the primary antibody for 1 hour at room temperature. The detection was performed using an HRP conjugated compact polymer system. DAB was used as the chromogen. Tissues were counterstained with hematoxylin and mounted with DPX.



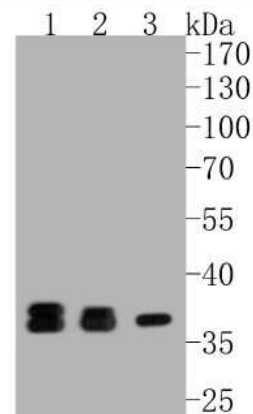
**Flow Cytometry: Lactate Dehydrogenase A/LDHA Antibody (SU39-06) [NBP2-67483]** - Analysis of Hela cells with Lactate Dehydrogenase antibody at 1/50 dilution (red) compared with an unlabelled control (cells without incubation with primary antibody; black).



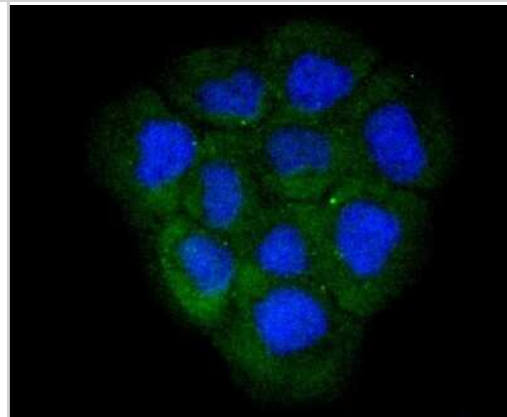
**Western Blot: Lactate Dehydrogenase A/LDHA Antibody (SU39-06) [NBP2-67483]** - Western blot analysis of Lactate Dehydrogenase on hybrid fish (crucian-carp) brain tissue lysate using anti-Lactate Dehydrogenase antibody at 1/500 dilution.



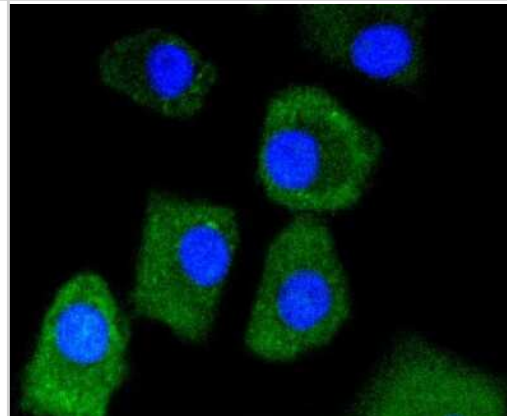
**Western Blot: Lactate Dehydrogenase A/LDHA Antibody (SU39-06) [NBP2-67483]** - Western blot analysis of Lactate Dehydrogenase A/LDHA on different lysates. Proteins were transferred to a PVDF membrane and blocked with 5% BSA in PBS for 1 hour at room temperature. The primary antibody (1/500) was used in 5% BSA at room temperature for



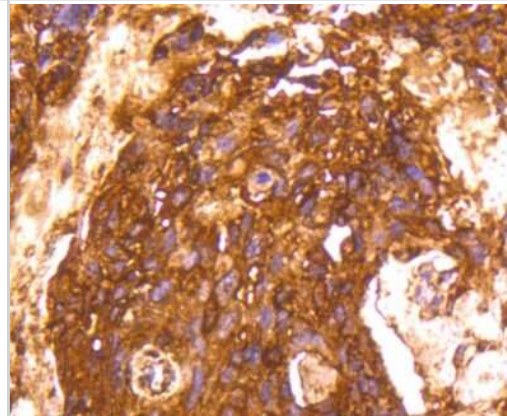
**Immunocytochemistry/Immunofluorescence: Lactate Dehydrogenase A/LDHA Antibody (SU39-06) [NBP2-67483]** - Staining Lactate Dehydrogenase in A431 cells (green). The nuclear counter stain is DAPI (blue). Cells were fixed in paraformaldehyde, permeabilised with 0.25% Triton X100/PBS.



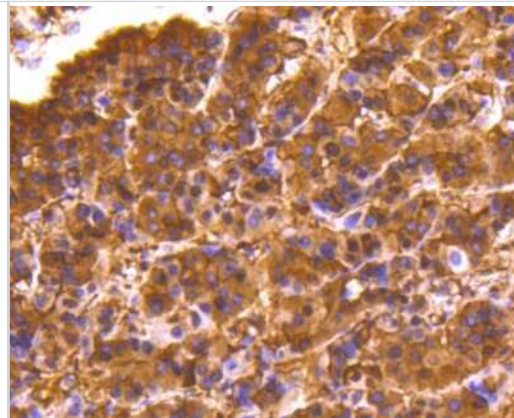
**Immunocytochemistry/Immunofluorescence: Lactate Dehydrogenase A/LDHA Antibody (SU39-06) [NBP2-67483]** - Staining Lactate Dehydrogenase in A549 cells (green). The nuclear counter stain is DAPI (blue). Cells were fixed in paraformaldehyde, permeabilised with 0.25% Triton X100/PBS.



**Immunohistochemistry-Paraffin: Lactate Dehydrogenase A/LDHA Antibody (SU39-06) [NBP2-67483]** - Analysis of paraffin-embedded human breast carcinoma tissue using anti-Lactate Dehydrogenase antibody. Counter stained with hematoxylin.



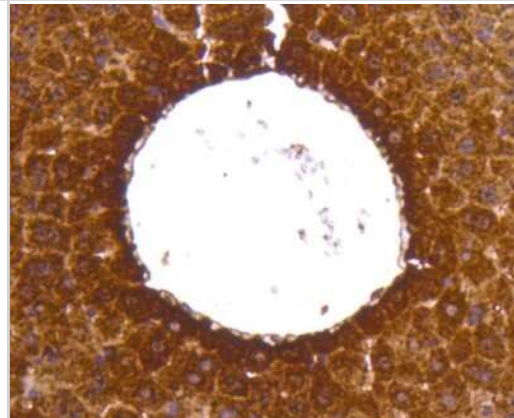
Immunohistochemistry-Paraffin: Lactate Dehydrogenase A/LDHA Antibody (SU39-06) [NBP2-67483] - Analysis of paraffin-embedded human liver cancer tissue using anti-Lactate Dehydrogenase antibody. Counter stained with hematoxylin.



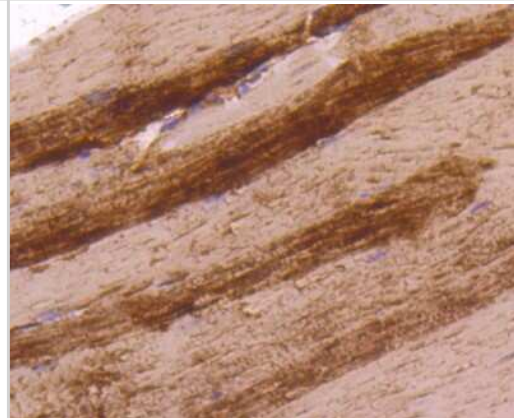
Immunohistochemistry-Paraffin: Lactate Dehydrogenase A/LDHA Antibody (SU39-06) [NBP2-67483] - Analysis of paraffin-embedded human liver tissue using anti-Lactate Dehydrogenase antibody. Counter stained with hematoxylin.



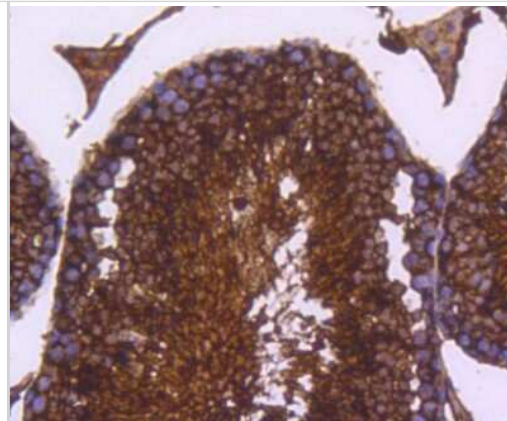
Immunohistochemistry-Paraffin: Lactate Dehydrogenase A/LDHA Antibody (SU39-06) [NBP2-67483] - Analysis of paraffin-embedded mouse liver tissue using anti-Lactate Dehydrogenase antibody. Counter stained with hematoxylin.



Immunohistochemistry-Paraffin: Lactate Dehydrogenase A/LDHA Antibody (SU39-06) [NBP2-67483] - Analysis of paraffin-embedded mouse skeletal muscle tissue using anti-Lactate Dehydrogenase antibody. Counter stained with hematoxylin.



Immunohistochemistry-Paraffin: Lactate Dehydrogenase A/LDHA Antibody (SU39-06) [NBP2-67483] - Analysis of paraffin-embedded mouse testis tissue using anti-Lactate Dehydrogenase antibody. Counter stained with hematoxylin.



## Publications

Sung CS, Cheng HJ, Chen NF et al. Antinociceptive Effects of Aaptamine, a Sponge Component, on Peripheral Neuropathy in Rats Marine drugs 2023-02-04 [PMID: 36827154] (IHC-Fr)

Details:

Dilution used in IHC-Fr 1:800

McFarland A, Yalin A, Wang S et al. Multi-tissue single-cell analysis deconstructs the complex programs of mouse natural killer and type 1 innate lymphoid cells in tissues and circulation Immunity 2021-05-01 [PMID: 33945787]

Singh KB, Hahm ER, Alumkal JJ et al. Reversal of the Warburg phenomenon in chemoprevention of prostate cancer by sulforaphane Carcinogenesis 2019-09-26 [PMID: 31555797]



### **Novus Biologicals USA**

10730 E. Briarwood Avenue  
Centennial, CO 80112  
USA  
Phone: 303.730.1950  
Toll Free: 1.888.506.6887  
Fax: 303.730.1966  
nb-customerservice@bio-techne.com

### **Bio-Techne Canada**

21 Canmotor Ave  
Toronto, ON M8Z 4E6  
Canada  
Phone: 905.827.6400  
Toll Free: 855.668.8722  
Fax: 905.827.6402  
canada.inquires@bio-techne.com

### **Bio-Techne Ltd**

19 Barton Lane  
Abingdon Science Park  
Abingdon, OX14 3NB, United Kingdom  
Phone: (44) (0) 1235 529449  
Free Phone: 0800 37 34 15  
Fax: (44) (0) 1235 533420  
info.EMEA@bio-techne.com

### **General Contact Information**

www.novusbio.com  
Technical Support: nb-technical@bio-techne.com  
Orders: nb-customerservice@bio-techne.com  
General: novus@novusbio.com

### **Products Related to NBP2-67483**

---

|               |  |
|---------------|--|
| HAF008        | Goat anti-Rabbit IgG Secondary Antibody [HRP]          |
| NB7160        | Goat anti-Rabbit IgG (H+L) Secondary Antibody [HRP]    |
| NBP2-24891    | Rabbit IgG Isotype Control                             |
| NBP1-48336PEP | Lactate Dehydrogenase A/LDHA Antibody Blocking Peptide |

---

### **Limitations**

This product is for research use only and is not approved for use in humans or in clinical diagnosis. Primary Antibodies are guaranteed for 1 year from date of receipt.

For more information on our 100% guarantee, please visit [www.novusbio.com/guarantee](http://www.novusbio.com/guarantee)

Earn gift cards/discounts by submitting a review: [www.novusbio.com/reviews/submit/NBP2-67483](http://www.novusbio.com/reviews/submit/NBP2-67483)

Earn gift cards/discounts by submitting a publication using this product:  
[www.novusbio.com/publications](http://www.novusbio.com/publications)

