

# Product Datasheet

## Mcl-1 Antibody (SI16-04) NBP2-67400

Unit Size: 100 ul

Store at 4C short term. Aliquot and store at -20C long term. Avoid freeze-thaw cycles.

[www.novusbio.com](http://www.novusbio.com)



[technical@novusbio.com](mailto:technical@novusbio.com)

Protocols, Publications, Related Products, Reviews, Research Tools and Images at:  
[www.novusbio.com/NBP2-67400](http://www.novusbio.com/NBP2-67400)

Updated 10/23/2024 v.20.1

Earn rewards for product  
reviews and publications.

Submit a publication at [www.novusbio.com/publications](http://www.novusbio.com/publications)

Submit a review at [www.novusbio.com/reviews/destination/NBP2-67400](http://www.novusbio.com/reviews/destination/NBP2-67400)



**NBP2-67400**

Mcl-1 Antibody (SI16-04)

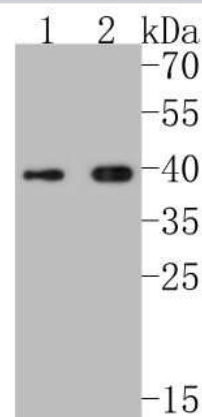
Product Information	
Unit Size	100 ul
Concentration	1 mg/ml
Storage	Store at 4C short term. Aliquot and store at -20C long term. Avoid freeze-thaw cycles.
Clonality	Monoclonal
Clone	SI16-04
Preservative	0.05% Sodium Azide
Isotype	IgG
Purity	Protein A purified
Buffer	TBS (pH7.4), 0.05% BSA, 40% Glycerol

Product Description	
Host	Rabbit
Gene ID	4170
Gene Symbol	MCL1
Species	Human, Mouse, Rat
Immunogen	Synthetic peptide within Human Mcl-1 aa 101-150 / 350. (SwissProt: Q07820 Human; SwissProt: P97287 Mouse; SwissProt: Q9Z1P3 Rat)

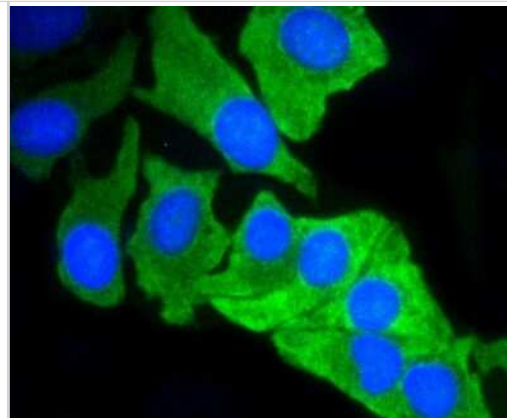
Product Application Details	
Applications	Western Blot, Flow Cytometry, Immunocytochemistry/ Immunofluorescence, Immunohistochemistry, Immunohistochemistry-Paraffin, Immunoprecipitation
Recommended Dilutions	Western Blot 1:500-1:1000, Flow Cytometry 1:50-1:100, Immunohistochemistry, Immunocytochemistry/ Immunofluorescence 1:50-1:200, Immunoprecipitation, Immunohistochemistry-Paraffin 1:50-1:200

**Images**

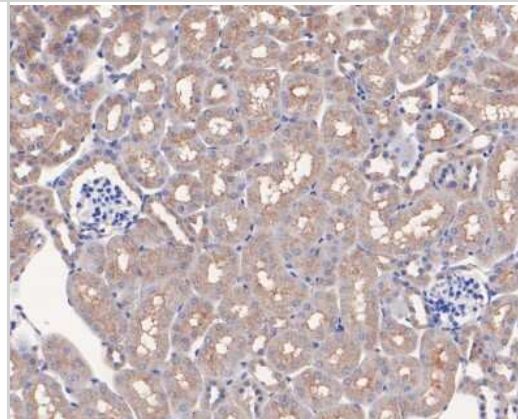
Western Blot: Mcl-1 Antibody (SI16-04) [NBP2-67400] - Western blot analysis of Mcl-1 on different lysates. Proteins were transferred to a PVDF membrane and blocked with 5% BSA in PBS for 1 hour at room temperature. The primary antibody (1/500) was used in 5% BSA at room temperature for 2 hours. Goat Anti-Rab



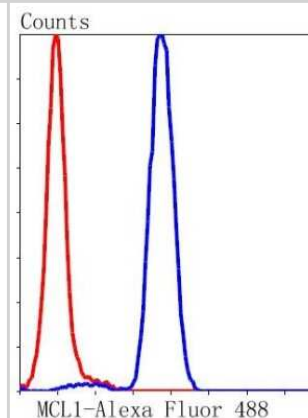
**Immunocytochemistry/Immunofluorescence: Mcl-1 Antibody (SI16-04) [NBP2-67400]** - Staining MCL1 in BT-20 cells (green). The nuclear counter stain is DAPI (blue). Cells were fixed in paraformaldehyde, permeabilised with 0.25% Triton X100/PBS.



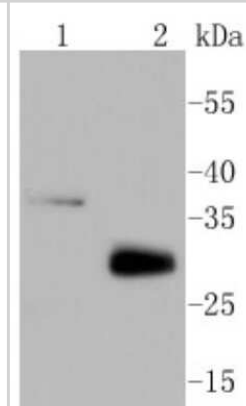
**Immunohistochemistry-Paraffin: Mcl-1 Antibody (SI16-04) [NBP2-67400]** - Immunohistochemical analysis of paraffin-embedded mouse kidney tissue using anti-Mcl-1 antibody. The section was pre-treated using heat mediated antigen retrieval with Tris-EDTA buffer (pH 8.0-8.4) for 20 minutes. The tissues were blocked in 5% BSA for 30 minutes at room temperature, washed with ddH<sub>2</sub>O and PBS, and then probed with the primary antibody (ET1606-14, 1/50) for 30 minutes at room temperature. The detection was performed using an HRP conjugated compact polymer system. DAB was used as the chromogen. Tissues were counterstained with hematoxylin and mounted with DPX.



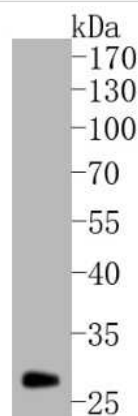
**Flow Cytometry: Mcl-1 Antibody (SI16-04) [NBP2-67400]** - Analysis of Jurkat cells with MCL1 antibody at 1/50 dilution (blue) compared with an unlabelled control (cells without incubation with primary antibody; red). Alexa Fluor 488-conjugated goat anti rabbit IgG was used as the secondary antibody.



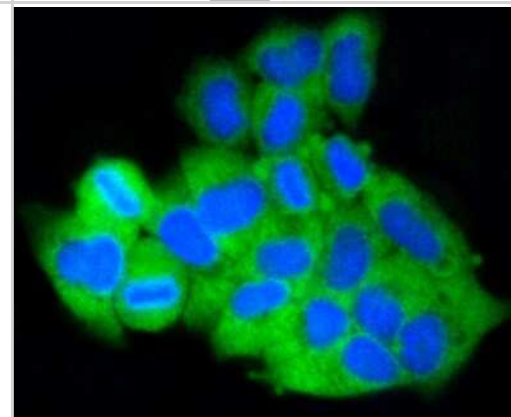
**Western Blot: Mcl-1 Antibody (SI16-04) [NBP2-67400]** - Analysis of MCL1 on different lysates using anti-MCL1 antibody at 1/1,000 dilution. Positive control: Lane 1: Raji Lane 2: Mouse heart



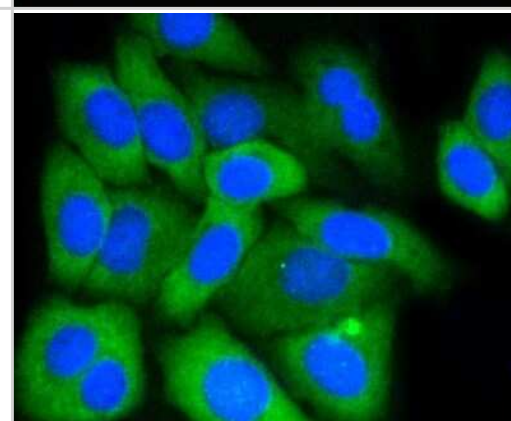
Western Blot: Mcl-1 Antibody (SI16-04) [NBP2-67400] - Western blot analysis of Mcl-1 on mouse heart tissue lysates. Proteins were transferred to a PVDF membrane and blocked with 5% BSA in PBS for 1 hour at room temperature. The primary antibody (1/500) was used in 5% BSA at room temperature for 2 hours. Goat



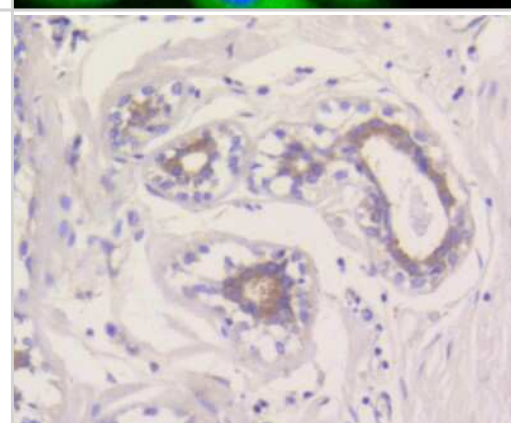
Immunocytochemistry/Immunofluorescence: Mcl-1 Antibody (SI16-04) [NBP2-67400] - Staining MCL1 in Hela cells (green). The nuclear counter stain is DAPI (blue). Cells were fixed in paraformaldehyde, permeabilised with 0.25% Triton X100/PBS.



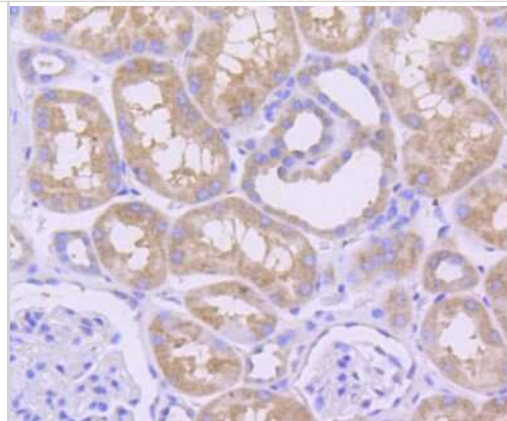
Immunocytochemistry/Immunofluorescence: Mcl-1 Antibody (SI16-04) [NBP2-67400] - Staining MCL1 in HepG2 cells (green). The nuclear counter stain is DAPI (blue). Cells were fixed in paraformaldehyde, permeabilised with 0.25% Triton X100/PBS.



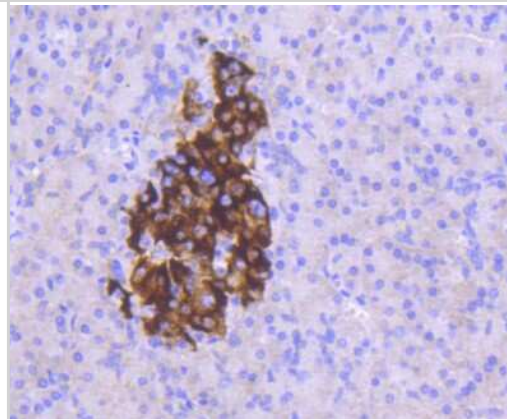
Immunohistochemistry-Paraffin: Mcl-1 Antibody (SI16-04) [NBP2-67400] - Analysis of paraffin-embedded human breast tissue using anti-MCL1 antibody. Counter stained with hematoxylin.



Immunohistochemistry-Paraffin: Mcl-1 Antibody (SI16-04) [NBP2-67400]  
- Analysis of paraffin-embedded human kidney tissue using anti-MCL1 antibody. Counter stained with hematoxylin.



Immunohistochemistry-Paraffin: Mcl-1 Antibody (SI16-04) [NBP2-67400]  
- Analysis of paraffin-embedded human pancreas tissue using anti-MCL1 antibody. Counter stained with hematoxylin.





### **Novus Biologicals USA**

10730 E. Briarwood Avenue  
Centennial, CO 80112  
USA  
Phone: 303.730.1950  
Toll Free: 1.888.506.6887  
Fax: 303.730.1966  
nb-customerservice@bio-techne.com

### **Bio-Techne Canada**

21 Canmotor Ave  
Toronto, ON M8Z 4E6  
Canada  
Phone: 905.827.6400  
Toll Free: 855.668.8722  
Fax: 905.827.6402  
canada.inquires@bio-techne.com

### **Bio-Techne Ltd**

19 Barton Lane  
Abingdon Science Park  
Abingdon, OX14 3NB, United Kingdom  
Phone: (44) (0) 1235 529449  
Free Phone: 0800 37 34 15  
Fax: (44) (0) 1235 533420  
info.EMEA@bio-techne.com

### **General Contact Information**

www.novusbio.com  
Technical Support: nb-technical@bio-techne.com  
Orders: nb-customerservice@bio-techne.com  
General: novus@novusbio.com

### **Products Related to NBP2-67400**

---

HAF008	Goat anti-Rabbit IgG Secondary Antibody [HRP]
NB7160	Goat anti-Rabbit IgG (H+L) Secondary Antibody [HRP]
NBP2-24891	Rabbit IgG Isotype Control
NB100-56146PEP	Mcl-1 Antibody Blocking Peptide

---

### **Limitations**

This product is for research use only and is not approved for use in humans or in clinical diagnosis. Primary Antibodies are guaranteed for 1 year from date of receipt.

For more information on our 100% guarantee, please visit [www.novusbio.com/guarantee](http://www.novusbio.com/guarantee)

Earn gift cards/discounts by submitting a review: [www.novusbio.com/reviews/submit/NBP2-67400](http://www.novusbio.com/reviews/submit/NBP2-67400)

Earn gift cards/discounts by submitting a publication using this product:  
[www.novusbio.com/publications](http://www.novusbio.com/publications)

