

# Product Datasheet

## LAMP-2/CD107b Antibody (SA46-01) NBP2-67298

Unit Size: 100 ul

Store at 4C short term. Aliquot and store at -20C long term. Avoid freeze-thaw cycles.

[www.novusbio.com](http://www.novusbio.com)



[technical@novusbio.com](mailto:technical@novusbio.com)

### Publications: 4

Protocols, Publications, Related Products, Reviews, Research Tools and Images at:  
[www.novusbio.com/NBP2-67298](http://www.novusbio.com/NBP2-67298)

Updated 10/23/2024 v.20.1

Earn rewards for product  
reviews and publications.

Submit a publication at [www.novusbio.com/publications](http://www.novusbio.com/publications)

Submit a review at [www.novusbio.com/reviews/destination/NBP2-67298](http://www.novusbio.com/reviews/destination/NBP2-67298)



**NBP2-67298****LAMP-2/CD107b Antibody (SA46-01)**

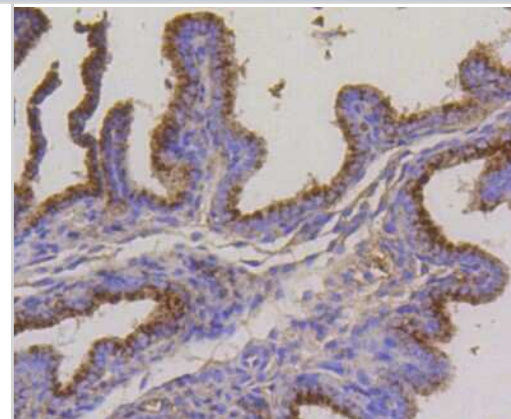
<b>Product Information</b>	
<b>Unit Size</b>	100 ul
<b>Concentration</b>	1 mg/ml
<b>Storage</b>	Store at 4C short term. Aliquot and store at -20C long term. Avoid freeze-thaw cycles.
<b>Clonality</b>	Monoclonal
<b>Clone</b>	SA46-01
<b>Preservative</b>	0.05% Sodium Azide
<b>Isotype</b>	IgG
<b>Purity</b>	Protein A purified
<b>Buffer</b>	TBS (pH7.4), 0.05% BSA, 40% Glycerol
<b>Target Molecular Weight</b>	45 kDa

<b>Product Description</b>	
<b>Host</b>	Rabbit
<b>Gene ID</b>	3920
<b>Gene Symbol</b>	LAMP2
<b>Species</b>	Human, Mouse, Rat
<b>Immunogen</b>	Synthetic peptide within Human LAMP-2/CD107b aa 361-410 / 410. (SwissProt: P13473 Human; SwissProt: P17047 Mouse; SwissProt: P17046 Rat)

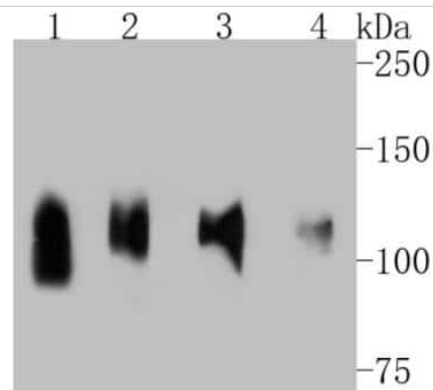
<b>Product Application Details</b>	
<b>Applications</b>	Western Blot, Immunohistochemistry, Immunohistochemistry-Paraffin, Immunoprecipitation
<b>Recommended Dilutions</b>	Western Blot 1:500-1:5000, Immunohistochemistry, Immunoprecipitation, Immunohistochemistry-Paraffin 1:50-1:200
<b>Application Notes</b>	IP-assay-dependent

**Images**

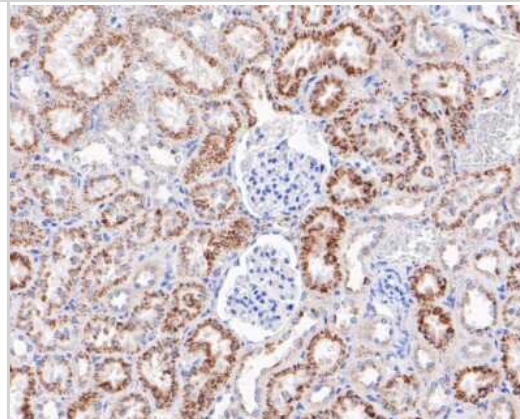
Immunohistochemistry-Paraffin: LAMP-2/CD107b Antibody (SA46-01) [NBP2-67298] - Analysis of paraffin-embedded mouse placenta tissue using anti-LAMP-2/CD107b antibody. Counter stained with hematoxylin.



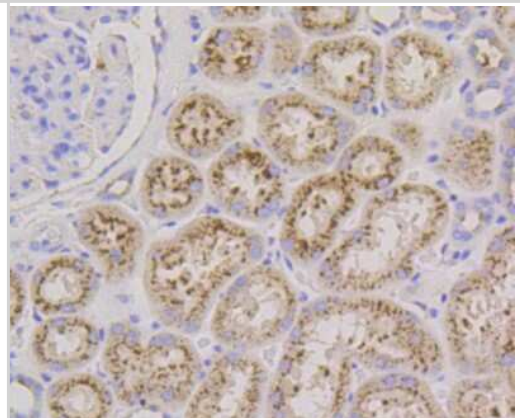
Western Blot: LAMP-2/CD107b Antibody (SA46-01) [NBP2-67298] - Analysis of LAMP2a on different lysates. Proteins were transferred to a PVDF membrane and blocked with 5% BSA in PBS for 1 hour at room temperature. The primary antibody (1/500) was used in 5% BSA at room temperature for 2 hours. Goat Anti-Rabbit IgG - HRP Secondary Antibody at 1:5,000 dilution was used for 1 hour at room temperature. Positive control: Lane 1: human liver tissue lysate Lane 2: JAR cell lysate Lane 3: human placenta tissue lysate Lane 4: human lung tissue lysate



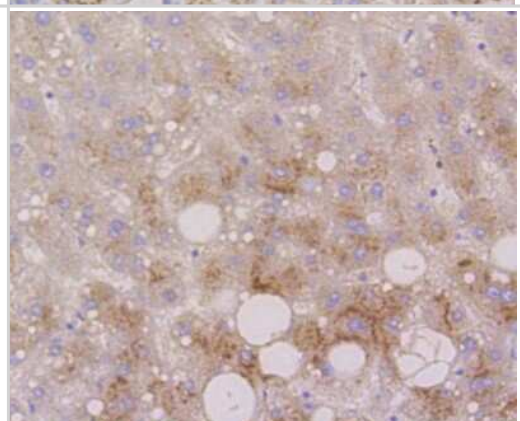
Immunohistochemistry-Paraffin: LAMP-2/CD107b Antibody (SA46-01) [NBP2-67298] - Immunohistochemical analysis of paraffin-embedded rat kidney tissue using anti-LAMP-2/CD107b antibody. The section was pre-treated using heat mediated antigen retrieval with Tris-EDTA buffer (pH 8.0-8.4) for 20 minutes. The tissues were blocked in 5% BSA



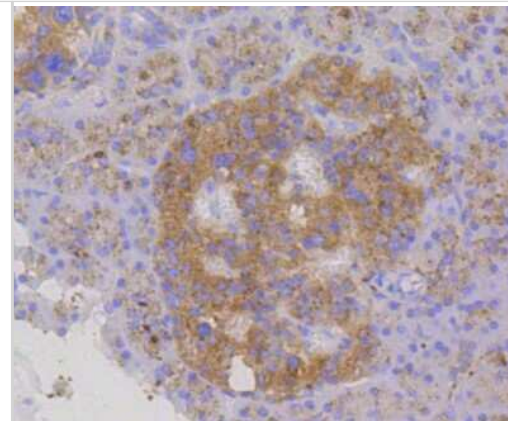
Immunohistochemistry-Paraffin: LAMP-2/CD107b Antibody (SA46-01) [NBP2-67298] - Analysis of paraffin-embedded human kidney tissue using anti-LAMP-2/CD107b antibody. Counter stained with hematoxylin.



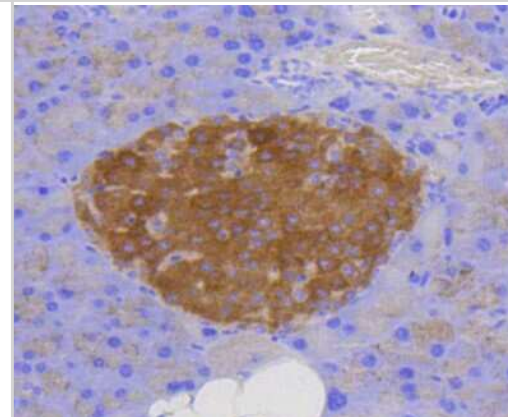
Immunohistochemistry-Paraffin: LAMP-2/CD107b Antibody (SA46-01) [NBP2-67298] - Analysis of paraffin-embedded human liver tissue using anti-LAMP-2/CD107b antibody. Counter stained with hematoxylin.



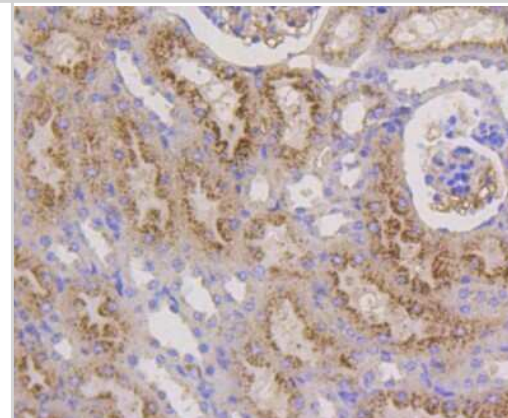
Immunohistochemistry-Paraffin: LAMP-2/CD107b Antibody (SA46-01) [NBP2-67298] - Analysis of paraffin-embedded human pancreas tissue using anti-LAMP-2/CD107b antibody. Counter stained with hematoxylin.



Immunohistochemistry-Paraffin: LAMP-2/CD107b Antibody (SA46-01) [NBP2-67298] - Analysis of paraffin-embedded mouse brain tissue using anti-LAMP-2/CD107b antibody. Counter stained with hematoxylin.



Immunohistochemistry-Paraffin: LAMP-2/CD107b Antibody (SA46-01) [NBP2-67298] - Analysis of paraffin-embedded mouse kidney tissue using anti-LAMP-2/CD107b antibody. Counter stained with hematoxylin.



## Publications

Jan Philipp Dobert, Simon Bub, Rebecca Mächtel, Dovile Janulienė, Lisa Steger, Martin Regensburger, Sibylle Wilfling, Jia-Xuan Chen, Mario Dejung, Sonja Plötz, Ute Hehr, Arne Moeller, Philipp Arnold, Friederike Zünke  
Activation and Purification of  $\beta$ -Glucocerebrosidase by Exploiting its Transporter LIMP-2 - Implications for Novel Treatment Strategies in Gaucher's and Parkinson's Disease. *Advanced science* (Weinheim, Baden-Württemberg, Germany) 2024-04-26 [PMID: 38666485]

Meenakshisundaram Balasubramaniam, Jagadeesh Narasimhappagari, Ling Liu, Akshatha Ganne, Srinivas Ayyadevara, Ramani Atluri, Haarika Ayyadevara, Guy Caldwell, Robert J Shmookler Reis, Steven W Barger, W Sue T Griffin  
Rescue of ApoE4-related lysosomal autophagic failure in Alzheimer's disease by targeted small molecules. *Communications biology* 2024-01-10 [PMID: 38191671]

Drobny A, Boros FA, Balta D et al. Reciprocal effects of alpha-synuclein aggregation and lysosomal homeostasis in synucleinopathy models *Translational neurodegeneration* 2023-06-13 [PMID: 37312133] (Western Blot)

Akel N, MacLeod RS, Berryhill SB et al. Loss of chaperone-mediated autophagy is associated with low vertebral cancellous bone mass *Scientific reports* 2022-02-24 [PMID: 35210514] (WB, Mouse)



### **Novus Biologicals USA**

10730 E. Briarwood Avenue  
Centennial, CO 80112  
USA  
Phone: 303.730.1950  
Toll Free: 1.888.506.6887  
Fax: 303.730.1966  
nb-customerservice@bio-techne.com

### **Bio-Techne Canada**

21 Canmotor Ave  
Toronto, ON M8Z 4E6  
Canada  
Phone: 905.827.6400  
Toll Free: 855.668.8722  
Fax: 905.827.6402  
canada.inquires@bio-techne.com

### **Bio-Techne Ltd**

19 Barton Lane  
Abingdon Science Park  
Abingdon, OX14 3NB, United Kingdom  
Phone: (44) (0) 1235 529449  
Free Phone: 0800 37 34 15  
Fax: (44) (0) 1235 533420  
info.EMEA@bio-techne.com

### **General Contact Information**

www.novusbio.com  
Technical Support: nb-technical@bio-techne.com  
Orders: nb-customerservice@bio-techne.com  
General: novus@novusbio.com

### **Products Related to NBP2-67298**

---

HAF008	Goat anti-Rabbit IgG Secondary Antibody [HRP]
NB7160	Goat anti-Rabbit IgG (H+L) Secondary Antibody [HRP]
NBP2-24891	Rabbit IgG Isotype Control
NBP2-50563-50ug	Recombinant Mouse LAMP-2/CD107b His Protein

---

### **Limitations**

This product is for research use only and is not approved for use in humans or in clinical diagnosis. Primary Antibodies are guaranteed for 1 year from date of receipt.

For more information on our 100% guarantee, please visit [www.novusbio.com/guarantee](http://www.novusbio.com/guarantee)

Earn gift cards/discounts by submitting a review: [www.novusbio.com/reviews/submit/NBP2-67298](http://www.novusbio.com/reviews/submit/NBP2-67298)

Earn gift cards/discounts by submitting a publication using this product:  
[www.novusbio.com/publications](http://www.novusbio.com/publications)

