

Product Datasheet

LRP-1 Antibody (SA0290) NBP2-67286

Unit Size: 100 ul

Store at 4C short term. Aliquot and store at -20C long term. Avoid freeze-thaw cycles.

www.novusbio.com



technical@novusbio.com

Protocols, Publications, Related Products, Reviews, Research Tools and Images at:
www.novusbio.com/NBP2-67286

Updated 10/23/2024 v.20.1

Earn rewards for product
reviews and publications.

Submit a publication at www.novusbio.com/publications

Submit a review at www.novusbio.com/reviews/destination/NBP2-67286



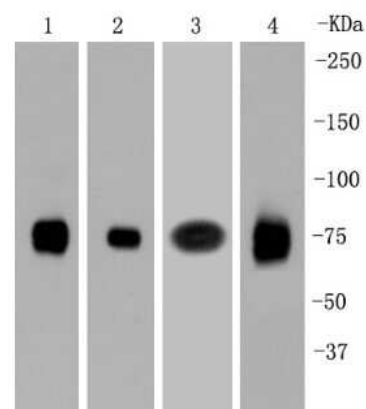
NBP2-67286

LRP-1 Antibody (SA0290)

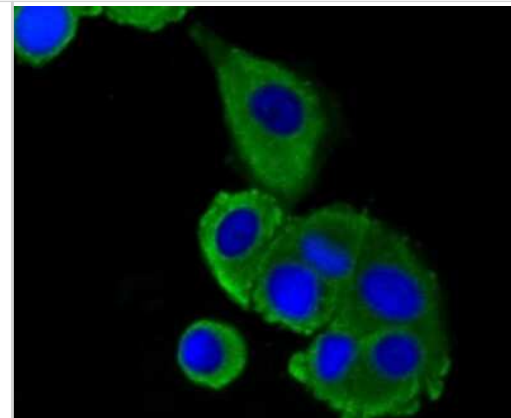
Product Information	
Unit Size	100 ul
Concentration	1 mg/ml
Storage	Store at 4C short term. Aliquot and store at -20C long term. Avoid freeze-thaw cycles.
Clonality	Monoclonal
Clone	SA0290
Preservative	0.05% Sodium Azide
Isotype	IgG
Purity	Protein A purified
Buffer	TBS (pH7.4), 0.05% BSA, 40% Glycerol
Product Description	
Host	Rabbit
Gene ID	4035
Gene Symbol	LRP1
Species	Human, Mouse, Rat
Immunogen	Synthetic peptide within Human LRP-1 aa 4,471-4,520 / 4,544. (SwissProt: Q07954 Human; SwissProt: Q91ZX7 Mouse; SwissProt: G3V928 Rat)
Product Application Details	
Applications	Western Blot, Flow Cytometry, Immunocytochemistry/ Immunofluorescence, Immunohistochemistry, Immunohistochemistry-Frozen, Immunohistochemistry-Paraffin, Immunoprecipitation
Recommended Dilutions	Western Blot 1:500-1:5000, Flow Cytometry 1:50-1:100, Immunohistochemistry, Immunocytochemistry/ Immunofluorescence 1:50-1:200, Immunoprecipitation, Immunohistochemistry-Paraffin 1:200, Immunohistochemistry-Frozen 1:100
Application Notes	IP-assay-dependent

Images

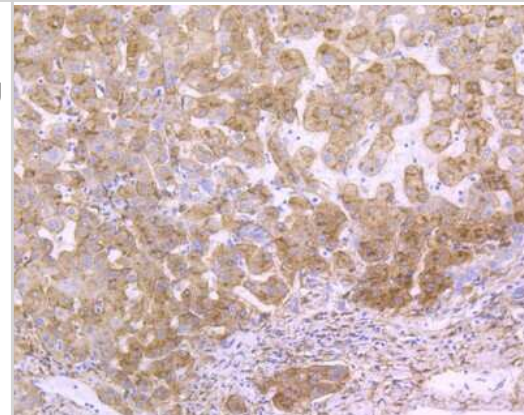
Western Blot: LRP-1 Antibody (SA0290) [NBP2-67286] - Western blot analysis of LRP-1 on different lysates. Proteins were transferred to a PVDF membrane and blocked with 5% BSA in PBS for 1 hour at room temperature. The primary antibody (1/500) was used in 5% BSA at room temperature for 2 hours. Goat Anti-Rab



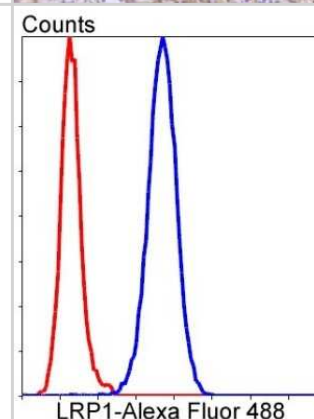
Immunocytochemistry/Immunofluorescence: LRP-1 Antibody (SA0290) [NBP2-67286] - Staining LRP-1 in MCF-7 cells (green). The nuclear counter stain is DAPI (blue). Cells were fixed in paraformaldehyde, permeabilised with 0.25% Triton X100/PBS.



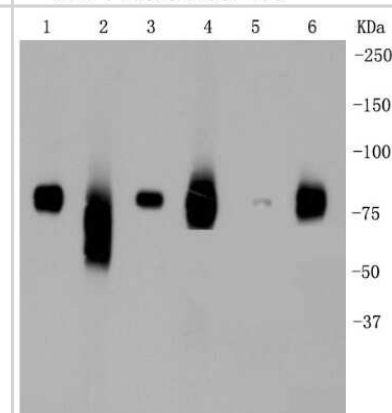
Immunohistochemistry-Paraffin: LRP-1 Antibody (SA0290) [NBP2-67286] - Immunohistochemical analysis of paraffin-embedded human liver tissue using anti-LRP-1 antibody. The section was pre-treated using heat mediated antigen retrieval with Tris-EDTA buffer (pH 8.0-8.4) for 20 minutes. The tissues were blocked in 5% BSA for 30



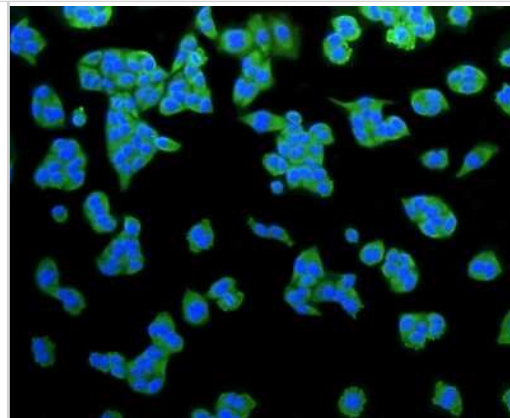
Flow Cytometry: LRP-1 Antibody (SA0290) [NBP2-67286] - Analysis of Hela cells with LRP1 antibody at 1/50 dilution (blue) compared with an unlabelled control (cells without incubation with primary antibody; red). Alexa Fluor 488-conjugated goat anti-rabbit IgG was used as the secondary antibody.



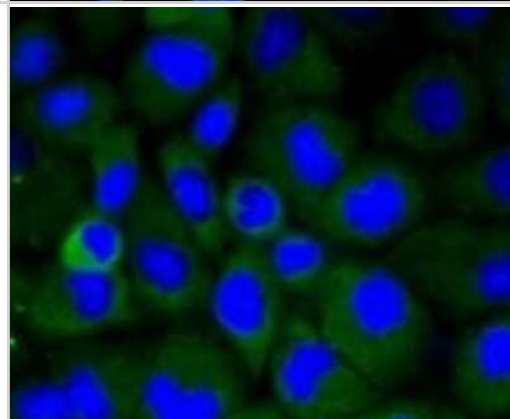
Western Blot: LRP-1 Antibody (SA0290) [NBP2-67286] - Analysis of LRP-1 on different lysates using LRP-1 antibody at 1/1,000 dilution. Positive control: Lane 1: Mouse liver Lane 2: Mouse brain Lane 3: Mouse lung Lane 4: Human liver Lane 5: HepG2 Lane 6: Human lung



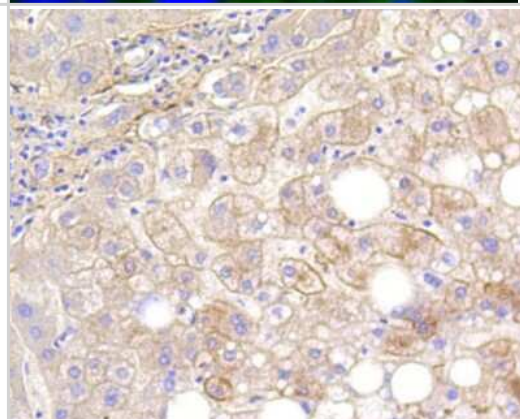
Immunocytochemistry/Immunofluorescence: LRP-1 Antibody (SA0290) [NBP2-67286] - Staining LRP-1 in Hela cells (green). The nuclear counter stain is DAPI (blue). Cells were fixed in paraformaldehyde, permeabilised with 0.25% Triton X100/PBS.



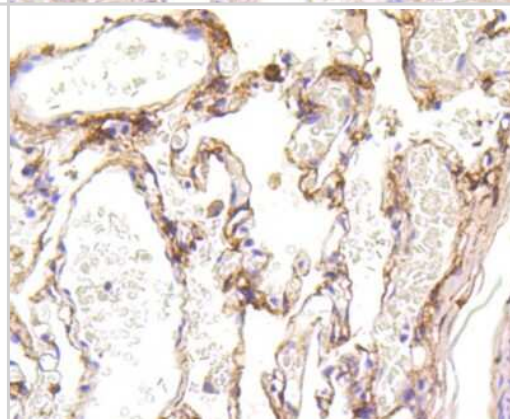
Immunocytochemistry/Immunofluorescence: LRP-1 Antibody (SA0290) [NBP2-67286] - Staining LRP-1 in HUVEC cells (green). Cells were fixed in paraformaldehyde, permeabilised with 0.25% Triton X100/PBS.



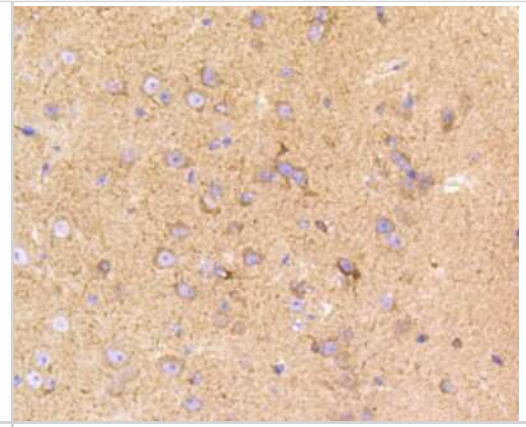
Immunohistochemistry-Paraffin: LRP-1 Antibody (SA0290) [NBP2-67286] - Analysis of paraffin-embedded human liver tissue using LRP-1 antibody. Counter stained with hematoxylin.



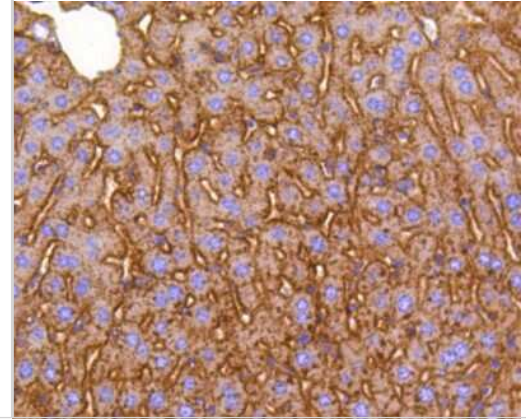
Immunohistochemistry-Paraffin: LRP-1 Antibody (SA0290) [NBP2-67286] - Analysis of paraffin-embedded human lung tissue using LRP-1 antibody. Counter stained with hematoxylin.



Immunohistochemistry-Paraffin: LRP-1 Antibody (SA0290) [NBP2-67286] - Analysis of paraffin-embedded mouse brain tissue using LRP-1 antibody. Counter stained with hematoxylin.



Immunohistochemistry-Paraffin: LRP-1 Antibody (SA0290) [NBP2-67286] - Analysis of paraffin-embedded mouse liver tissue using LRP-1 antibody. Counter stained with hematoxylin.





Novus Biologicals USA

10730 E. Briarwood Avenue
Centennial, CO 80112
USA
Phone: 303.730.1950
Toll Free: 1.888.506.6887
Fax: 303.730.1966
nb-customerservice@bio-techne.com

Bio-Techne Canada

21 Canmotor Ave
Toronto, ON M8Z 4E6
Canada
Phone: 905.827.6400
Toll Free: 855.668.8722
Fax: 905.827.6402
canada.inquires@bio-techne.com

Bio-Techne Ltd

19 Barton Lane
Abingdon Science Park
Abingdon, OX14 3NB, United Kingdom
Phone: (44) (0) 1235 529449
Free Phone: 0800 37 34 15
Fax: (44) (0) 1235 533420
info.EMEA@bio-techne.com

General Contact Information

www.novusbio.com
Technical Support: nb-technical@bio-techne.com
Orders: nb-customerservice@bio-techne.com
General: novus@novusbio.com

Products Related to NBP2-67286

HAF008	Goat anti-Rabbit IgG Secondary Antibody [HRP]
NB7160	Goat anti-Rabbit IgG (H+L) Secondary Antibody [HRP]
NBP2-24891	Rabbit IgG Isotype Control
H00004035-P01-10ug	Recombinant Human LRP-1 GST (N-Term) Protein

Limitations

This product is for research use only and is not approved for use in humans or in clinical diagnosis. Primary Antibodies are guaranteed for 1 year from date of receipt.

For more information on our 100% guarantee, please visit www.novusbio.com/guarantee

Earn gift cards/discounts by submitting a review: www.novusbio.com/reviews/submit/NBP2-67286

Earn gift cards/discounts by submitting a publication using this product:
www.novusbio.com/publications

