

# Product Datasheet

## Complement C3 Antibody (JF10-30) NBP2-66994

Unit Size: 100 ul

Store at 4C short term. Aliquot and store at -20C long term. Avoid freeze-thaw cycles.

[www.novusbio.com](http://www.novusbio.com)



[technical@novusbio.com](mailto:technical@novusbio.com)

### Publications: 1

Protocols, Publications, Related Products, Reviews, Research Tools and Images at:  
[www.novusbio.com/NBP2-66994](http://www.novusbio.com/NBP2-66994)

Updated 10/23/2024 v.20.1

Earn rewards for product  
reviews and publications.

Submit a publication at [www.novusbio.com/publications](http://www.novusbio.com/publications)

Submit a review at [www.novusbio.com/reviews/destination/NBP2-66994](http://www.novusbio.com/reviews/destination/NBP2-66994)



**NBP2-66994**

Complement C3 Antibody (JF10-30)

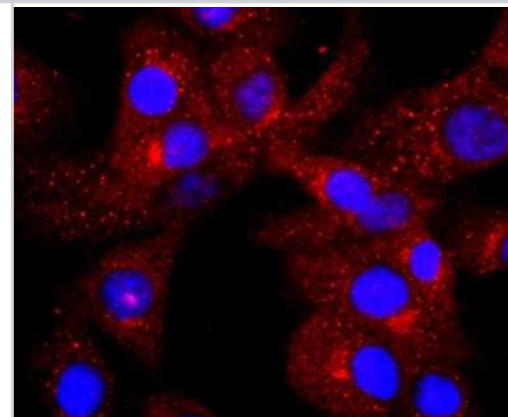
Product Information	
Unit Size	100 ul
Concentration	1 mg/ml
Storage	Store at 4C short term. Aliquot and store at -20C long term. Avoid freeze-thaw cycles.
Clonality	Monoclonal
Clone	JF10-30
Preservative	0.05% Sodium Azide
Isotype	IgG
Purity	Protein A purified
Buffer	TBS (pH7.4), 0.05% BSA, 40% Glycerol
Target Molecular Weight	187 kDa

Product Description	
Host	Rabbit
Gene ID	718
Gene Symbol	C3
Species	Human, Mouse, Rat
Specificity/Sensitivity	Can detect the following chains: Complement C3 alpha chain, Complement C3b alpha, Complement C3dg, and Complement C3d
Immunogen	Synthetic peptide within Human Complement C3 aa 1,210-1,248 / 1,663. (SwissProt: P01024 Human; SwissProt: P01027 Mouse)

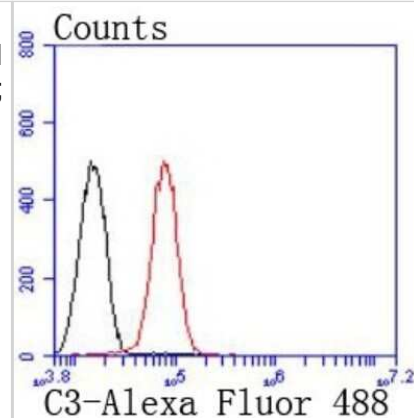
Product Application Details	
Applications	Western Blot, Flow Cytometry, Immunocytochemistry/ Immunofluorescence, Immunohistochemistry-Paraffin
Recommended Dilutions	Western Blot 1:1000, Flow Cytometry 1:50-1:100, Immunocytochemistry/ Immunofluorescence 1:50-1:100, Immunohistochemistry-Paraffin Reported in scientific literature (PMID: 31578522)

**Images**

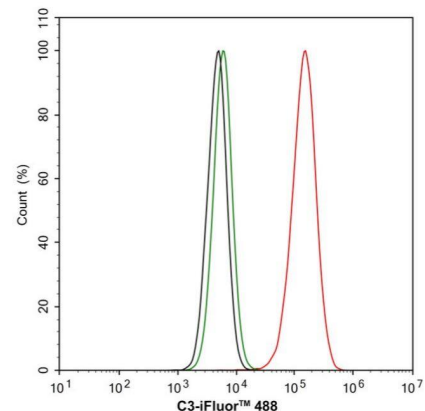
Immunocytochemistry/Immunofluorescence: Complement C3 Antibody (JF10-30) [NBP2-66994] - Staining C3 in NIH/3T3 cells (red). The nuclear counter stain is DAPI (blue). Cells were fixed in paraformaldehyde, permeabilised with 0.25% Triton X-100, PBS.



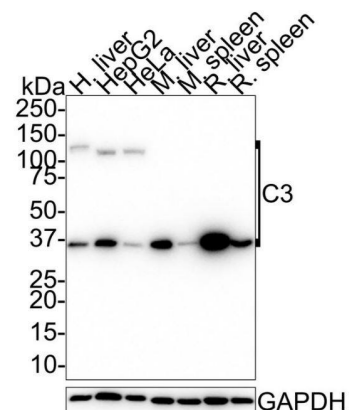
**Flow Cytometry: Complement C3 Antibody (JF10-30) [NBP2-66994]** - Analysis of HepG2 cells with C3 antibody at 1:50 dilution (red) compared with an unlabelled control (cells without incubation with primary antibody; black). Alexa Fluor 488-conjugated goat anti rabbit IgG was used as the secondary antibody



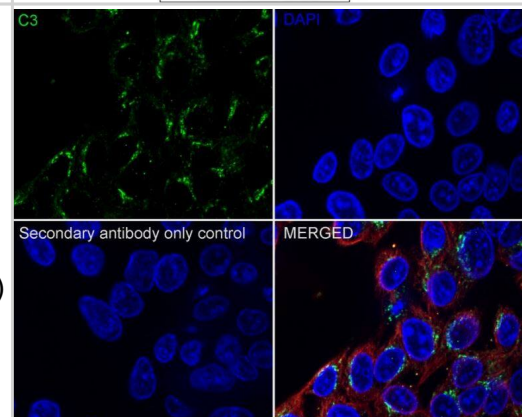
**Flow Cytometry: Complement C3 Antibody (JF10-30) [NBP2-66994]** - Cells were fixed and permeabilized. Then stained with the primary antibody (1µg/mL) (red) compared with Rabbit IgG Isotype Control (green). After incubation of the primary antibody at +4c for an hour, the cells were stained with a iFluor™ 488 conjugate-Goat anti-Rabbit IgG Secondary antibody (HA1121) at 1/1,000 dilution for 30 minutes at +4 c. Unlabelled sample was used as a control (cells without incubation with primary antibody; black).



**Western Blot: Complement C3 Antibody (JF10-30) [NBP2-66994]** - Western blot analysis of C3 on different lysates with Rabbit anti-C3 antibody at 1/1,000 dilution. Lane 1: Human liver tissue lysate Lane 2: HepG2 cell lysate Lane 3: HeLa cell lysate Lane 4: Mouse liver tissue lysate Lane 5: Mouse spleen tissue lysate Lane 6: Rat liver tissue lysate Lane 7: Rat spleen tissue lysate Lysates/proteins at 30 µg/Lane. Predicted band size: 187 kDa Observed band size: 108/37 kDa Exposure time: 1 minute; 4-20% SDS-PAGE gel.



**Immunocytochemistry/Immunofluorescence: Complement C3 Antibody (JF10-30) [NBP2-66994]** - Cells were fixed in 100% precooled methanol for 5 minutes at room temperature, then blocked with 1% BSA in 10% negative goat serum for 1 hour at room temperature. Cells were then incubated with Rabbit anti-C3 antibody at 1/100 dilution in 1% BSA in PBST overnight at 4 °C. Goat Anti-Rabbit IgG H&L (iFluor™ 488, was used as the secondary antibody at 1/1,000 dilution. PBS instead of the primary antibody was used as the secondary antibody only control. Nuclear DNA was labelled in blue with DAPI. Beta tubulin (M1305-2, red) was stained at 1/100 dilution overnight at +4 c. Goat Anti-Mouse IgG H&L (iFluor™ ) was used as the secondary antibody at 1/1,000 dilution.



## Publications

Aykut B, Pushalkar S, Chen R et al. The fungal mycobiome promotes pancreatic oncogenesis via activation of MBL Nature 2019-10-02 [PMID: 31578522] (IHC-P, Mouse)



### **Novus Biologicals USA**

10730 E. Briarwood Avenue  
Centennial, CO 80112  
USA  
Phone: 303.730.1950  
Toll Free: 1.888.506.6887  
Fax: 303.730.1966  
nb-customerservice@bio-techne.com

### **Bio-Techne Canada**

21 Canmotor Ave  
Toronto, ON M8Z 4E6  
Canada  
Phone: 905.827.6400  
Toll Free: 855.668.8722  
Fax: 905.827.6402  
canada.inquires@bio-techne.com

### **Bio-Techne Ltd**

19 Barton Lane  
Abingdon Science Park  
Abingdon, OX14 3NB, United Kingdom  
Phone: (44) (0) 1235 529449  
Free Phone: 0800 37 34 15  
Fax: (44) (0) 1235 533420  
info.EMEA@bio-techne.com

### **General Contact Information**

www.novusbio.com  
Technical Support: nb-technical@bio-techne.com  
Orders: nb-customerservice@bio-techne.com  
General: novus@novusbio.com

### **Products Related to NBP2-66994**

---

HAF008	Goat anti-Rabbit IgG Secondary Antibody [HRP]
NB7160	Goat anti-Rabbit IgG (H+L) Secondary Antibody [HRP]
NBP2-24891	Rabbit IgG Isotype Control
P3343-10ug	Recombinant Mouse Complement C3 GST (N-Term) Protein

---

### **Limitations**

This product is for research use only and is not approved for use in humans or in clinical diagnosis. Primary Antibodies are guaranteed for 1 year from date of receipt.

For more information on our 100% guarantee, please visit [www.novusbio.com/guarantee](http://www.novusbio.com/guarantee)

Earn gift cards/discounts by submitting a review: [www.novusbio.com/reviews/submit/NBP2-66994](http://www.novusbio.com/reviews/submit/NBP2-66994)

Earn gift cards/discounts by submitting a publication using this product:  
[www.novusbio.com/publications](http://www.novusbio.com/publications)

