

Product Datasheet

MMR/CD206/Mannose Receptor Antibody (JF0953) NBP2-66956

Unit Size: 100 ul

Store at 4C short term. Aliquot and store at -20C long term. Avoid freeze-thaw cycles.

www.novusbio.com



technical@novusbio.com

Protocols, Publications, Related Products, Reviews, Research Tools and Images at:
www.novusbio.com/NBP2-66956

Updated 10/23/2024 v.20.1

Earn rewards for product
reviews and publications.

Submit a publication at www.novusbio.com/publications

Submit a review at www.novusbio.com/reviews/destination/NBP2-66956



NBP2-66956

MMR/CD206/Mannose Receptor Antibody (JF0953)

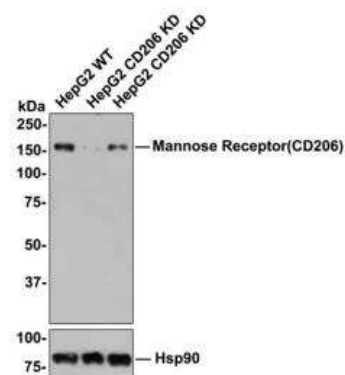
Product Information	
Unit Size	100 ul
Concentration	1 mg/ml
Storage	Store at 4C short term. Aliquot and store at -20C long term. Avoid freeze-thaw cycles.
Clonality	Monoclonal
Clone	JF0953
Preservative	0.05% Sodium Azide
Isotype	IgG
Purity	Protein A purified
Buffer	TBS (pH7.4), 0.2% BSA, 50% Glycerol

Product Description	
Host	Rabbit
Gene ID	4360
Gene Symbol	MRC1
Species	Human, Mouse
Immunogen	Synthetic peptide within Human MMR/CD206/Mannose Receptor aa 1,407-1,456 / 1,456. (SwissProt: P22897 Human; SwissProt: Q61830 Mouse)

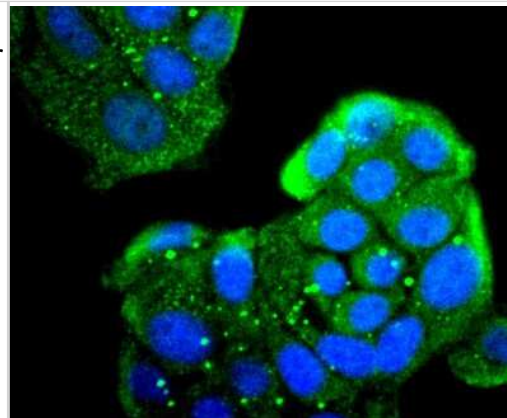
Product Application Details	
Applications	Western Blot, Flow Cytometry, Immunocytochemistry/ Immunofluorescence, Knockdown Validated
Recommended Dilutions	Western Blot 1:1000-1:5000, Flow Cytometry 1:500-1:1000, Immunocytochemistry/ Immunofluorescence 1:100-1:500, Knockdown Validated

Images

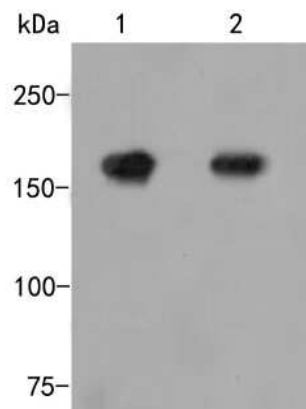
Western Blot: MMR/CD206/Mannose Receptor Antibody (JF0953) [NBP2-66956] - Lane 1: Wild-type HepG2 whole cell lysate (10 ug). Lane 2: CD206 knockdown HepG2 whole cell lysate (10 ug). Lane 3: CD206 knockdown HepG2 whole cell lysate (10 ug). NBP2-66956 was shown to specifically react with CD206 in wild-type Hela cells. Weakened bands were observed when CD206 knockdown samples were tested. Wild-type and CD206 knockdown samples were subjected to SDS-PAGE. Proteins were transferred to a PVDF membrane and blocked with 5% NFDM in TBST for 1 hour at room temperature. The primary antibody (1/500) was used in 5% BSA at room temperature for 2 hours. Goat Anti-Rabbit IgG-HRP Secondary Antibody at 1:300,000 dilution was used for 1 hour at room temperature.



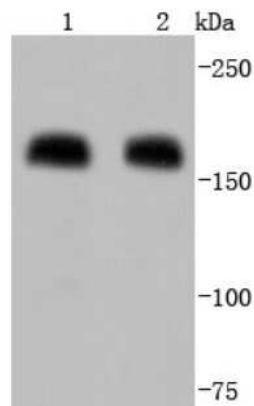
Immunocytochemistry/Immunofluorescence: MMR/CD206/Mannose Receptor Antibody (JF0953) [NBP2-66956] - Staining Mannose Receptor in MCF-7 cells (green). The nuclear counter stain is DAPI (blue). Cells were fixed in paraformaldehyde, permeabilised with 0.25% Triton X100/PBS.



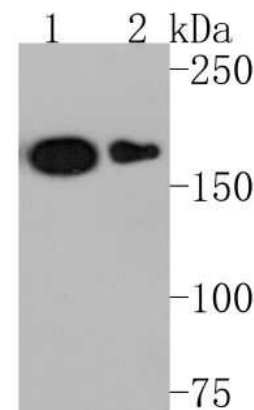
Western Blot: MMR/CD206/Mannose Receptor Antibody (JF0953) [NBP2-66956] - Western blot analysis of MMR/CD206/Mannose Receptor on different lysates. Proteins were transferred to a PVDF membrane and blocked with 5% BSA in PBS for 1 hour at room temperature. The primary antibody (1/500) was used in 5% BSA at room temperature for 2 hours. Goat Anti-Rabbit IgG - HRP Secondary Antibody (HA1001) at 1:5,000 dilution was used for 1 hour at room temperature. Positive control: Lane 1: Mouse lung tissue lysate Lane 2: D3 cell lysate



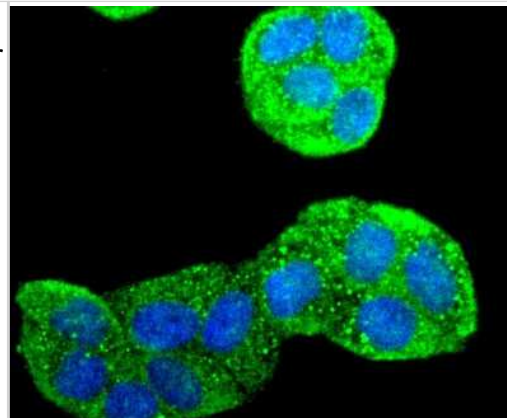
Western Blot: MMR/CD206/Mannose Receptor Antibody (JF0953) [NBP2-66956] - Western blot analysis of Mannose Receptor(CD206) on different lysates. Proteins were transferred to a PVDF membrane and blocked with 5% BSA in PBS for 1 hour at room temperature. The primary antibody (1/500) was used in 5% BSA at room temperature for 2 hours. Goat Anti-Rabbit IgG - HRP Secondary Antibody (HA1001) at 1:5,000 dilution was used for 1 hour at room temperature. Positive control: Lane 1: Human lung tissue lysate Lane 2: HepG2 cell lysate



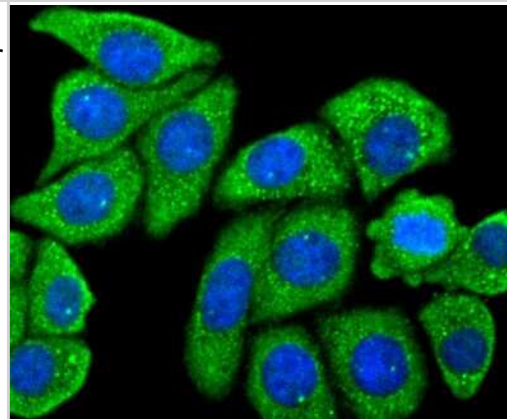
Western Blot: MMR/CD206/Mannose Receptor Antibody (JF0953) [NBP2-66956] - Western blot analysis of Mannose Receptor(CD206) on different lysates. Proteins were transferred to a PVDF membrane and blocked with 5% BSA in PBS for 1 hour at room temperature. The primary antibody (1/500) was used in 5% BSA at room temperature for 2 hours. Goat Anti-Rabbit IgG - HRP Secondary Antibody (HA1001) at 1:200,000 dilution was used for 1 hour at room temperature. Positive control: Lane 1: 293T cell lysate Lane 2: MCF-7 cell lysate



Immunocytochemistry/Immunofluorescence: MMR/CD206/Mannose Receptor Antibody (JF0953) [NBP2-66956] - Staining Mannose Receptor in Hela cells (green). The nuclear counter stain is DAPI (blue). Cells were fixed in paraformaldehyde, permeabilised with 0.25% Triton X100/PBS.



Immunocytochemistry/Immunofluorescence: MMR/CD206/Mannose Receptor Antibody (JF0953) [NBP2-66956] - Staining Mannose Receptor in HepG2 cells (green). The nuclear counter stain is DAPI (blue). Cells were fixed in paraformaldehyde, permeabilised with 0.25% Triton X100/PBS.





Novus Biologicals USA

10730 E. Briarwood Avenue
Centennial, CO 80112
USA
Phone: 303.730.1950
Toll Free: 1.888.506.6887
Fax: 303.730.1966
nb-customerservice@bio-techne.com

Bio-Techne Canada

21 Canmotor Ave
Toronto, ON M8Z 4E6
Canada
Phone: 905.827.6400
Toll Free: 855.668.8722
Fax: 905.827.6402
canada.inquires@bio-techne.com

Bio-Techne Ltd

19 Barton Lane
Abingdon Science Park
Abingdon, OX14 3NB, United Kingdom
Phone: (44) (0) 1235 529449
Free Phone: 0800 37 34 15
Fax: (44) (0) 1235 533420
info.EMEA@bio-techne.com

General Contact Information

www.novusbio.com
Technical Support: nb-technical@bio-techne.com
Orders: nb-customerservice@bio-techne.com
General: novus@novusbio.com

Products Related to NBP2-66956

HAF008	Goat anti-Rabbit IgG Secondary Antibody [HRP]
NB7160	Goat anti-Rabbit IgG (H+L) Secondary Antibody [HRP]
NBP2-24891	Rabbit IgG Isotype Control
NBP1-90020PEP	MMR/CD206/Mannose Receptor Recombinant Protein Antigen

Limitations

This product is for research use only and is not approved for use in humans or in clinical diagnosis. Primary Antibodies are guaranteed for 1 year from date of receipt.

For more information on our 100% guarantee, please visit www.novusbio.com/guarantee

Earn gift cards/discounts by submitting a review: www.novusbio.com/reviews/submit/NBP2-66956

Earn gift cards/discounts by submitting a publication using this product:
www.novusbio.com/publications

