

# Product Datasheet

## LXR alpha/NR1H3 Antibody (JA20-38) NBP2-66938

Unit Size: 100 ul

Store at 4C short term. Aliquot and store at -20C long term. Avoid freeze-thaw cycles.

[www.novusbio.com](http://www.novusbio.com)



[technical@novusbio.com](mailto:technical@novusbio.com)

Reviews: 1

Protocols, Publications, Related Products, Reviews, Research Tools and Images at:  
[www.novusbio.com/NBP2-66938](http://www.novusbio.com/NBP2-66938)

Updated 10/23/2024 v.20.1

Earn rewards for product  
reviews and publications.

Submit a publication at [www.novusbio.com/publications](http://www.novusbio.com/publications)

Submit a review at [www.novusbio.com/reviews/destination/NBP2-66938](http://www.novusbio.com/reviews/destination/NBP2-66938)



**NBP2-66938**

LXR alpha/NR1H3 Antibody (JA20-38)

**Product Information**

<b>Unit Size</b>	100 ul
<b>Concentration</b>	1 mg/ml
<b>Storage</b>	Store at 4C short term. Aliquot and store at -20C long term. Avoid freeze-thaw cycles.
<b>Clonality</b>	Monoclonal
<b>Clone</b>	JA20-38
<b>Preservative</b>	0.05% Sodium Azide
<b>Isotype</b>	IgG
<b>Purity</b>	Protein A purified
<b>Buffer</b>	TBS (pH7.4), 0.05% BSA, 40% Glycerol

**Product Description**

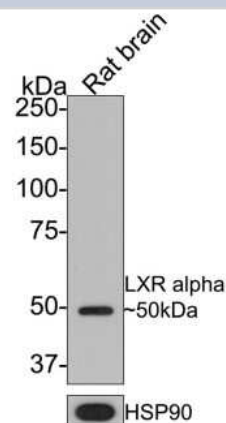
<b>Host</b>	Rabbit
<b>Gene ID</b>	10062
<b>Gene Symbol</b>	NR1H3
<b>Species</b>	Human, Mouse, Rat
<b>Immunogen</b>	Synthetic peptide within Human LXR alpha/NR1H3 aa 49-98 / 447. (SwissProt: Q13133 Human; SwissProt: Q9Z0Y9 Mouse; SwissProt: Q62685 Rat)

**Product Application Details**

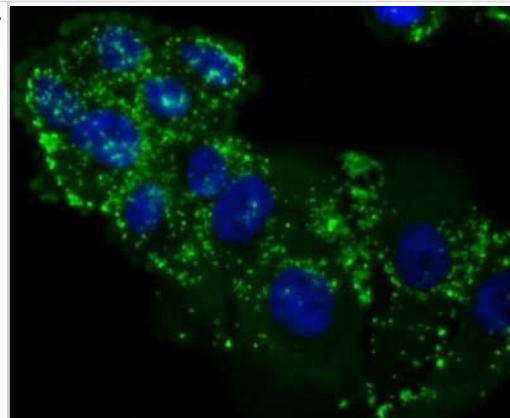
<b>Applications</b>	Western Blot, Flow Cytometry, Immunocytochemistry/ Immunofluorescence, Immunohistochemistry, Immunohistochemistry-Paraffin
<b>Recommended Dilutions</b>	Western Blot 1:500-1:2000, Flow Cytometry 1:50-1:100, Immunohistochemistry, Immunocytochemistry/ Immunofluorescence 1:50-1:100, Immunohistochemistry-Paraffin 1:50-1:200

**Images**

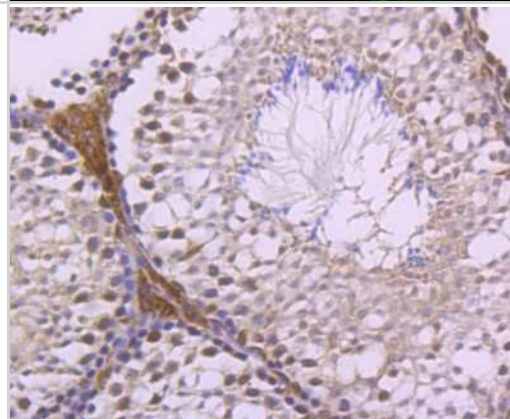
Western Blot: LXR alpha/NR1H3 Antibody (JA20-38) [NBP2-66938] - Analysis of LXR alpha/NR1H3 on rat brain tissue lysates with Rabbit anti-LXR alpha antibody at 1/500 dilution. Lysates/proteins at 20 ug/Lane. Predicted band size: 50 kDa Observed band size: 50 kDa Exposure time: 2 minutes; 8% SDS-PAGE gel. Proteins were transferred to a PVDF membrane and blocked with 5% NFDM/TBST for 1 hour at room temperature. The primary antibody at 1/500 dilution was used in 5% NFDM/TBST at room temperature for 2 hours. Goat Anti-Rabbit IgG - HRP Secondary Antibody at 1:300,000 dilution was used for 1 hour at room temperature.



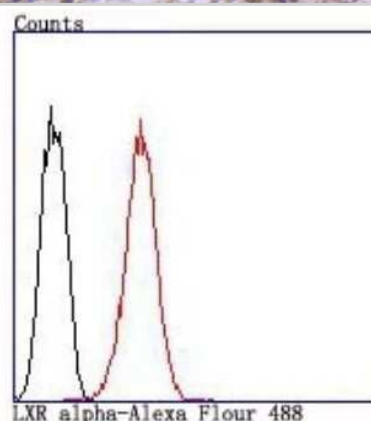
Immunocytochemistry/Immunofluorescence: LXR alpha/NR1H3 Antibody (JA20-38) [NBP2-66938] - Staining LXR alpha/NR1H3 in HepG2 cells (green). The nuclear counter stain is DAPI (blue). Cells were fixed in paraformaldehyde, permeabilised with 0.25% Triton X100/PBS.



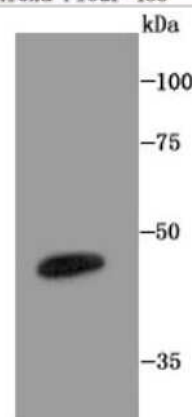
Immunohistochemistry-Paraffin: LXR alpha/NR1H3 Antibody (JA20-38) [NBP2-66938] - Analysis of paraffin-embedded mouse testes tissue using anti-LXR alpha/NR1H3 antibody. Counter stained with hematoxylin.



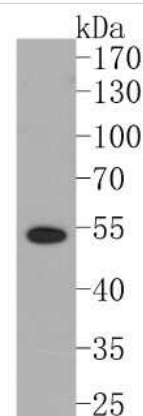
Flow Cytometry: LXR alpha/NR1H3 Antibody (JA20-38) [NBP2-66938] - Analysis of HepG2 cells with LXR alpha/NR1H3 antibody at 1/100 dilution (red) compared with an unlabelled control (cells without incubation with primary antibody; black).



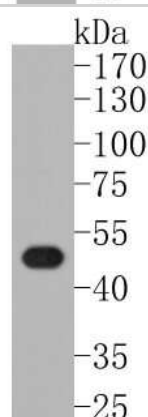
Western Blot: LXR alpha/NR1H3 Antibody (JA20-38) [NBP2-66938] - Analysis of LXR alpha on mouse colon tissue lysate using anti-LXR alpha/NR1H3 antibody at 1/1,000 dilution.



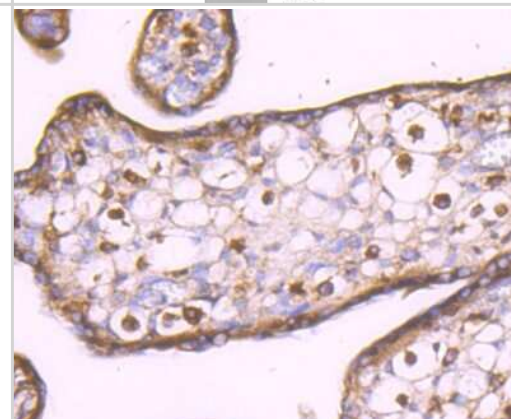
**Western Blot: LXR alpha/NR1H3 Antibody (JA20-38) [NBP2-66938]** - Analysis of LXR alpha/NR1H3 on human liver tissue lysates. Proteins were transferred to a PVDF membrane and blocked with 5% BSA in PBS for 1 hour at room temperature. The primary antibody (1/500) was used in 5% BSA at room temperature for 2 hours. Goat Anti-Rabbit IgG - HRP Secondary Antibody (HA1001) at 1:5,000 dilution was used for 1 hour at room temperature.



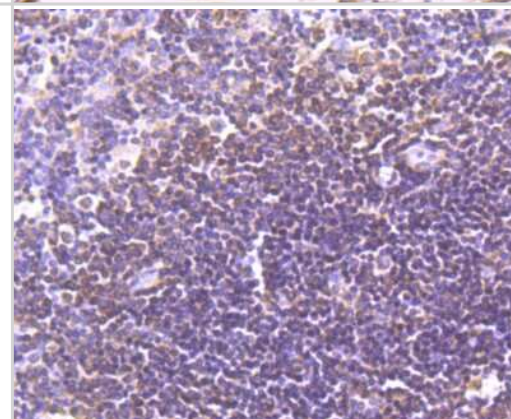
**Western Blot: LXR alpha/NR1H3 Antibody (JA20-38) [NBP2-66938]** - Analysis of LXR alpha/NR1H3 on mouse colon tissue lysates. Proteins were transferred to a PVDF membrane and blocked with 5% BSA in PBS for 1 hour at room temperature. The primary antibody (1/500) was used in 5% BSA at room temperature for 2 hours. Goat Anti-Rabbit IgG - HRP Secondary Antibody at 1:200,000 dilution was used for 1 hour at room temperature.



**Immunohistochemistry-Paraffin: LXR alpha/NR1H3 Antibody (JA20-38) [NBP2-66938]** - Analysis of paraffin-embedded human placenta tissue using anti-LXR alpha/NR1H3 antibody. Counter stained with hematoxylin.



**Immunohistochemistry-Paraffin: LXR alpha/NR1H3 Antibody (JA20-38) [NBP2-66938]** - Analysis of paraffin-embedded human spleen tissue using anti-LXR alpha/NR1H3 antibody. Counter stained with hematoxylin.





### **Novus Biologicals USA**

10730 E. Briarwood Avenue  
Centennial, CO 80112  
USA  
Phone: 303.730.1950  
Toll Free: 1.888.506.6887  
Fax: 303.730.1966  
nb-customerservice@bio-techne.com

### **Bio-Techne Canada**

21 Canmotor Ave  
Toronto, ON M8Z 4E6  
Canada  
Phone: 905.827.6400  
Toll Free: 855.668.8722  
Fax: 905.827.6402  
canada.inquires@bio-techne.com

### **Bio-Techne Ltd**

19 Barton Lane  
Abingdon Science Park  
Abingdon, OX14 3NB, United Kingdom  
Phone: (44) (0) 1235 529449  
Free Phone: 0800 37 34 15  
Fax: (44) (0) 1235 533420  
info.EMEA@bio-techne.com

### **General Contact Information**

[www.novusbio.com](http://www.novusbio.com)  
Technical Support: nb-technical@bio-techne.com  
Orders: nb-customerservice@bio-techne.com  
General: novus@novusbio.com

### **Products Related to NBP2-66938**

---

HAF008	Goat anti-Rabbit IgG Secondary Antibody [HRP]
NB7160	Goat anti-Rabbit IgG (H+L) Secondary Antibody [HRP]
NBP2-24891	Rabbit IgG Isotype Control
NB400-157PEP	LXR alpha/NR1H3 Antibody Blocking Peptide

---

### **Limitations**

This product is for research use only and is not approved for use in humans or in clinical diagnosis. Primary Antibodies are guaranteed for 1 year from date of receipt.

For more information on our 100% guarantee, please visit [www.novusbio.com/guarantee](http://www.novusbio.com/guarantee)

Earn gift cards/discounts by submitting a review: [www.novusbio.com/reviews/submit/NBP2-66938](http://www.novusbio.com/reviews/submit/NBP2-66938)

Earn gift cards/discounts by submitting a publication using this product:  
[www.novusbio.com/publications](http://www.novusbio.com/publications)

