

Product Datasheet

Glucosylceramidase/GBA Antibody (JM10-76) NBP2-66871

Unit Size: 100 ul

Store at 4C short term. Aliquot and store at -20C long term. Avoid freeze-thaw cycles.

www.novusbio.com



technical@novusbio.com

Protocols, Publications, Related Products, Reviews, Research Tools and Images at:
www.novusbio.com/NBP2-66871

Updated 10/23/2024 v.20.1

Earn rewards for product
reviews and publications.

Submit a publication at www.novusbio.com/publications

Submit a review at www.novusbio.com/reviews/destination/NBP2-66871



NBP2-66871**Glucosylceramidase/GBA Antibody (JM10-76)****Product Information**

Unit Size	100 ul
Concentration	1 mg/ml
Storage	Store at 4C short term. Aliquot and store at -20C long term. Avoid freeze-thaw cycles.
Clonality	Monoclonal
Clone	JM10-76
Preservative	0.05% Sodium Azide
Isotype	IgG
Purity	Protein A purified
Buffer	TBS (pH7.4), 0.05% BSA, 40% Glycerol

Product Description

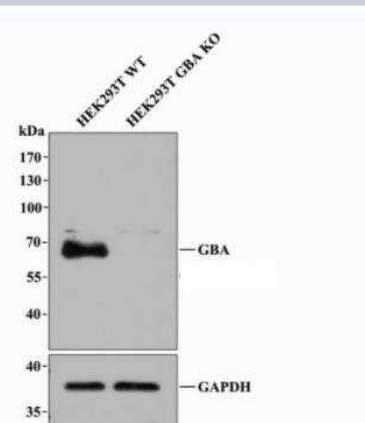
Host	Rabbit
Gene ID	2629
Gene Symbol	GBA1
Species	Human, Mouse, Rat
Immunogen	Synthetic peptide within Human Glucosylceramidase/GBA aa 477-534 / 536. (SwissProt: P04062 Human; SwissProt: P17439 Mouse; Entrez Gene:684536 Rat)

Product Application Details

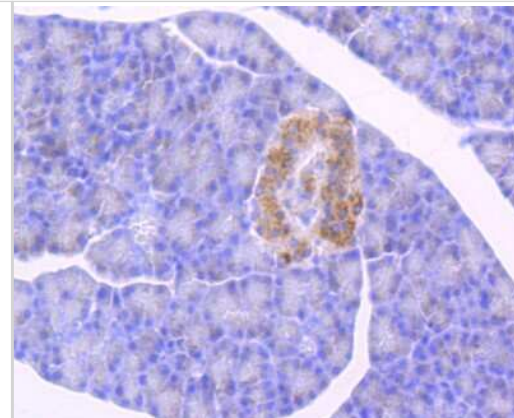
Applications	Western Blot, Flow Cytometry, Immunocytochemistry/ Immunofluorescence, Immunohistochemistry, Immunohistochemistry-Frozen, Immunohistochemistry-Paraffin
Recommended Dilutions	Western Blot 1:500-1:2000, Flow Cytometry 1:500, Immunohistochemistry, Immunocytochemistry/ Immunofluorescence 1:100, Immunohistochemistry-Paraffin 1:50-1:200, Immunohistochemistry-Frozen

Images

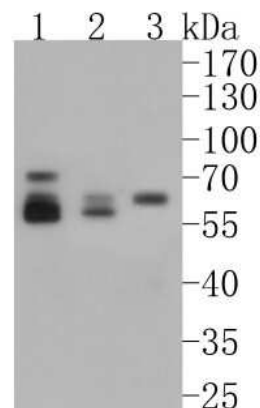
Western Blot: Glucosylceramidase/GBA Antibody (JM10-76) [NBP2-66871] - All lanes: Western blot analysis of GBA with anti-GBA antibody [JM10-76 at 1:1,000 dilution. Lane 1: Wild-type HEK293T whole cell lysate (20 ug). Lane 2: GBA knockout HEK293T whole cell lysate (20 ug). NBP2-66871 was shown to specifically react with GBA in wild-type HEK293T cells. No band was observed when GBA knockout sample was tested. Wild-type and GBA knockout samples were subjected to SDS-PAGE. Proteins were transferred to a PVDF membrane and blocked with 5% NFDM in TBST for 1 hour at room temperature. The primary antibody (1/1,000) and Loading control antibody (Rabbit anti-GAPDH, 1/10,000) was used in 5% BSA at room temperature for 2 hours. Goat Anti-Rabbit IgG-HRP Secondary Antibody at 1:200,000 dilution was used for 1 hour at room temperature.



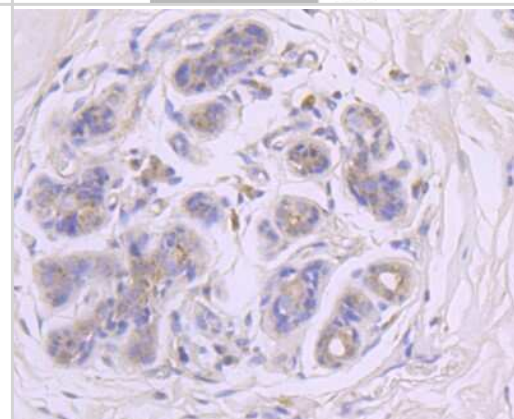
Immunohistochemistry-Paraffin: Glucosylceramidase/GBA Antibody (JM10-76) [NBP2-66871] - Analysis of paraffin-embedded mouse pancreas tissue using anti-GBA antibody. The section was pre-treated using heat mediated antigen retrieval with Tris-EDTA buffer (pH 8.0-8.4) for 20 minutes. The tissues were blocked in 5% BSA for 30 minutes at room temperature, washed with ddH₂O and PBS, and then probed with the primary antibody (1/50) for 30 minutes at room temperature. The detection was performed using an HRP conjugated compact polymer system. DAB was used as the chromogen. Tissues were counterstained with hematoxylin and mounted with DPX.



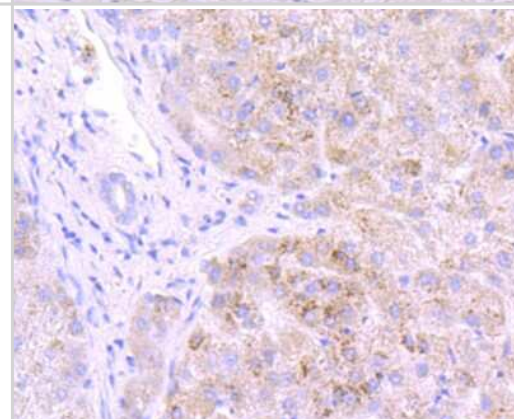
Western Blot: Glucosylceramidase/GBA Antibody (JM10-76) [NBP2-66871] - Western blot analysis of Glucosylceramidase/GBA on different lysates. Proteins were transferred to a PVDF membrane and blocked with 5% BSA in PBS for 1 hour at room temperature. The primary antibody (1/500) was used in 5% BSA at room temperature for 2 hours. Goat Anti-Rabbit IgG - HRP Secondary Antibody (HA1001) at 1:5,000 dilution was used for 1 hour at room temperature. Positive control: Lane 1: SK-Br-3 cell lysate Lane 2: A549 cell lysate Lane 3: MCF-7 cell lysate



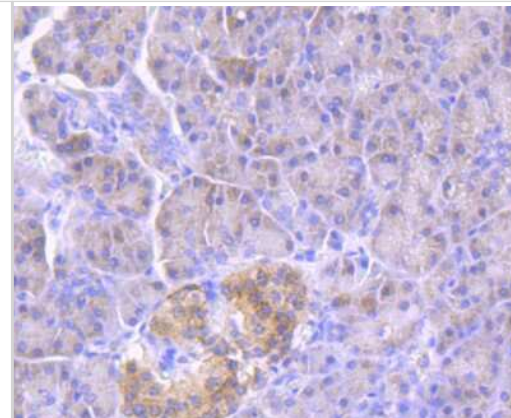
Immunohistochemistry-Paraffin: Glucosylceramidase/GBA Antibody (JM10-76) [NBP2-66871] - Analysis of paraffin-embedded human breast carcinoma tissue using anti-GBA antibody. Counter stained with hematoxylin.



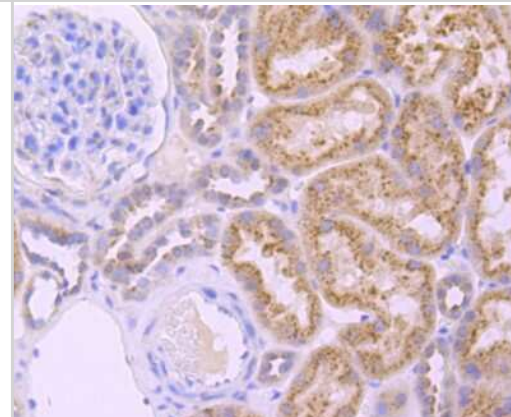
Immunohistochemistry-Paraffin: Glucosylceramidase/GBA Antibody (JM10-76) [NBP2-66871] - Analysis of paraffin-embedded human liver tissue using anti-GBA antibody. Counter stained with hematoxylin.



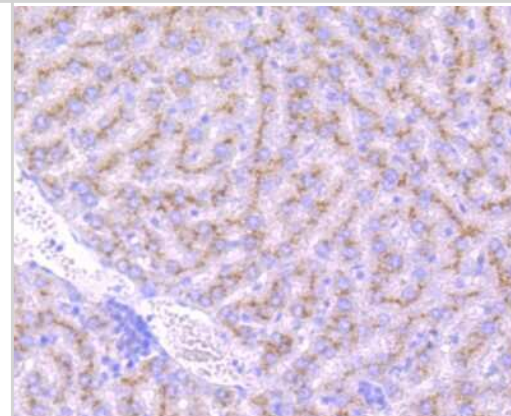
Immunohistochemistry-Paraffin: Glucosylceramidase/GBA Antibody (JM10-76) [NBP2-66871] - Analysis of paraffin-embedded human pancreas tissue using anti-GBA antibody. Counter stained with hematoxylin.



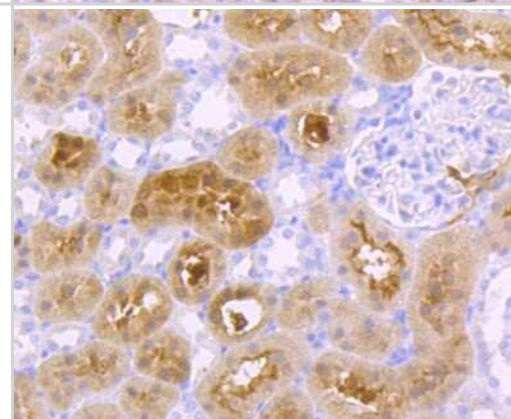
Immunohistochemistry-Paraffin: Glucosylceramidase/GBA Antibody (JM10-76) [NBP2-66871] - Analysis of paraffin-embedded human kidney tissue using anti-GBA antibody. The section was pre-treated using heat mediated antigen retrieval with Tris-EDTA buffer (pH 8.0-8.4) for 20 minutes. The tissues were blocked in 5% BSA for 30 minutes at room temperature, washed with ddH₂O and PBS, and then probed with the primary antibody (1/50) for 30 minutes at room temperature. The detection was performed using an HRP conjugated compact polymer system. DAB was used as the chromogen. Tissues were counterstained with hematoxylin and mounted with DPX.



Immunohistochemistry-Paraffin: Glucosylceramidase/GBA Antibody (JM10-76) [NBP2-66871] - Analysis of paraffin-embedded rat liver tissue using anti-GBA antibody. The section was pre-treated using heat mediated antigen retrieval with Tris-EDTA buffer (pH 8.0-8.4) for 20 minutes. The tissues were blocked in 5% BSA for 30 minutes at room temperature, washed with ddH₂O and PBS, and then probed with the primary antibody (1/50) for 30 minutes at room temperature. The detection was performed using an HRP conjugated compact polymer system. DAB was used as the chromogen. Tissues were counterstained with hematoxylin and mounted with DPX.



Immunohistochemistry-Paraffin: Glucosylceramidase/GBA Antibody (JM10-76) [NBP2-66871] - Analysis of paraffin-embedded rat kidney tissue using anti-GBA antibody. The section was pre-treated using heat mediated antigen retrieval with Tris-EDTA buffer (pH 8.0-8.4) for 20 minutes. The tissues were blocked in 5% BSA for 30 minutes at room temperature, washed with ddH₂O and PBS, and then probed with the primary antibody (1/50) for 30 minutes at room temperature. The detection was performed using an HRP conjugated compact polymer system. DAB was used as the chromogen. Tissues were counterstained with hematoxylin and mounted with DPX.





Novus Biologicals USA

10730 E. Briarwood Avenue
Centennial, CO 80112
USA
Phone: 303.730.1950
Toll Free: 1.888.506.6887
Fax: 303.730.1966
nb-customerservice@bio-techne.com

Bio-Techne Canada

21 Canmotor Ave
Toronto, ON M8Z 4E6
Canada
Phone: 905.827.6400
Toll Free: 855.668.8722
Fax: 905.827.6402
canada.inquires@bio-techne.com

Bio-Techne Ltd

19 Barton Lane
Abingdon Science Park
Abingdon, OX14 3NB, United Kingdom
Phone: (44) (0) 1235 529449
Free Phone: 0800 37 34 15
Fax: (44) (0) 1235 533420
info.EMEA@bio-techne.com

General Contact Information

www.novusbio.com
Technical Support: nb-technical@bio-
techne.com
Orders: nb-customerservice@bio-techne.com
General: novus@novusbio.com

Products Related to NBP2-66871

HAF008	Goat anti-Rabbit IgG Secondary Antibody [HRP]
NB7160	Goat anti-Rabbit IgG (H+L) Secondary Antibody [HRP]
NBP2-24891	Rabbit IgG Isotype Control
NBP2-52148-0.05mg	Recombinant Human Glucosylceramidase/GBA His Protein

Limitations

This product is for research use only and is not approved for use in humans or in clinical diagnosis. Primary Antibodies are guaranteed for 1 year from date of receipt.

For more information on our 100% guarantee, please visit www.novusbio.com/guarantee

Earn gift cards/discounts by submitting a review: www.novusbio.com/reviews/submit/NBP2-66871

Earn gift cards/discounts by submitting a publication using this product:
www.novusbio.com/publications

