

Product Datasheet

TCR gamma/delta Antibody (B1) - Low Endotoxin, Azide and BSA Free NBP2-62225

Unit Size: 0.1 mg

Store at 4C. Do not freeze.

www.novusbio.com



technical@novusbio.com

Protocols, Publications, Related Products, Reviews, Research Tools and Images at:
www.novusbio.com/NBP2-62225

Updated 2/23/2025 v.20.1

Earn rewards for product
reviews and publications.

Submit a publication at www.novusbio.com/publications

Submit a review at www.novusbio.com/reviews/destination/NBP2-62225



NBP2-62225

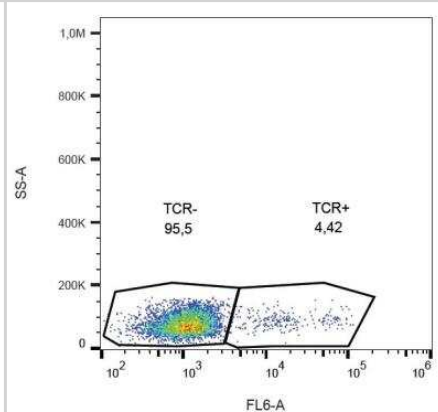
TCR gamma/delta Antibody (B1) - Low Endotoxin, Azide and BSA Free

Product Information	
Unit Size	0.1 mg
Concentration	Please see the vial label for concentration. If unlisted please contact technical services.
Storage	Store at 4C. Do not freeze.
Clonality	Monoclonal
Clone	B1
Preservative	No Preservative
Isotype	IgG1 Kappa
Purity	Protein A purified
Buffer	PBS (pH 7.4), 0.2 um filter sterilized
Product Description	
Host	Mouse
Gene ID	6965
Gene Symbol	TRG
Species	Human, Primate
Specificity/Sensitivity	The mouse monoclonal antibody B1 (also known as B1.1) recognizes TCR gamma/delta, the subtype of T cell receptor expressed mainly in epithelial tissues and at the sites of infection.
Immunogen	TCR gamma/delta, the subtype of T cell receptor expressed mainly in epithelial tissues and at the sites of infection.
Endotoxin Note	Endotoxin level is less than 0.01 EU/ug of the protein
Product Application Details	
Applications	Flow Cytometry, Flow (Cell Surface), Functional, Immunohistochemistry, Immunohistochemistry-Frozen, Immunohistochemistry-Paraffin
Recommended Dilutions	Flow Cytometry 1-4 ug/ml, Immunohistochemistry 1:10-1:500, Immunohistochemistry-Paraffin 1:10-1:500, Immunohistochemistry-Frozen 1:10-1:500, Functional, Flow (Cell Surface)

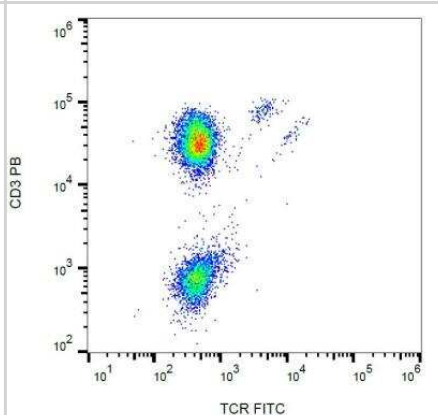


Images

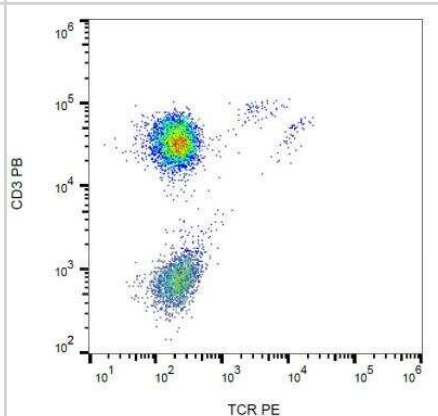
Flow (Cell Surface): TCR gamma/delta Antibody (B1) [NBP2-62225] - Surface staining of human peripheral blood lymphocytes with anti-human TCR gamma/delta (B1) purified, GAM-APC.



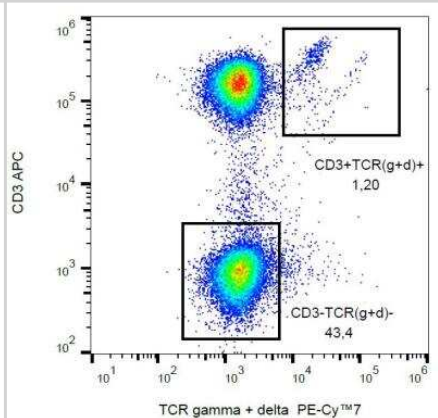
Flow (Cell Surface): TCR gamma/delta Antibody (B1) [NBP2-62225] - Surface staining of human peripheral blood lymphocytes with anti-human TCR gamma/delta (B1) FITC.



Flow (Cell Surface): TCR gamma/delta Antibody (B1) [NBP2-62225] - Surface staining of human peripheral blood lymphocytes with anti-human TCR gamma/delta (B1) PE.



Flow (Cell Surface): TCR gamma/delta Antibody (B1) [NBP2-62225] - Surface staining of human peripheral blood lymphocytes with anti-human TCR gamma/delta (B1) PE-CyTM7.





Novus Biologicals USA

10730 E. Briarwood Avenue
Centennial, CO 80112
USA
Phone: 303.730.1950
Toll Free: 1.888.506.6887
Fax: 303.730.1966
nb-customerservice@bio-techne.com

Bio-Techne Canada

21 Canmotor Ave
Toronto, ON M8Z 4E6
Canada
Phone: 905.827.6400
Toll Free: 855.668.8722
Fax: 905.827.6402
canada.inquires@bio-techne.com

Bio-Techne Ltd

19 Barton Lane
Abingdon Science Park
Abingdon, OX14 3NB, United Kingdom
Phone: (44) (0) 1235 529449
Free Phone: 0800 37 34 15
Fax: (44) (0) 1235 533420
info.EMEA@bio-techne.com

General Contact Information

www.novusbio.com
Technical Support: nb-technical@bio-techne.com
Orders: nb-customerservice@bio-techne.com
General: novus@novusbio.com

Products Related to NBP2-62225

HAF007	Goat anti-Mouse IgG Secondary Antibody [HRP]
NB720-B	Rabbit anti-Mouse IgG (H+L) Secondary Antibody [Biotin]
NBP1-43319-0.5mg	Mouse IgG1 Kappa Isotype Control (P3.6.2.8.1)
NBP1-19371	CD4 Antibody - BSA Free

Limitations

This product is for research use only and is not approved for use in humans or in clinical diagnosis. Primary Antibodies are guaranteed for 1 year from date of receipt.

For more information on our 100% guarantee, please visit www.novusbio.com/guarantee

Earn gift cards/discounts by submitting a review: www.novusbio.com/reviews/submit/NBP2-62225

Earn gift cards/discounts by submitting a publication using this product:
www.novusbio.com/publications

