

Product Datasheet

CD1c/BDCA-1 Antibody (L161) - BSA Free NBP2-62220

Unit Size: 0.1 mg

Store at 4C. Do not freeze.

www.novusbio.com



technical@novusbio.com

Protocols, Publications, Related Products, Reviews, Research Tools and Images at:
www.novusbio.com/NBP2-62220

Updated 2/23/2025 v.20.1

Earn rewards for product
reviews and publications.

Submit a publication at www.novusbio.com/publications

Submit a review at www.novusbio.com/reviews/destination/NBP2-62220



NBP2-62220

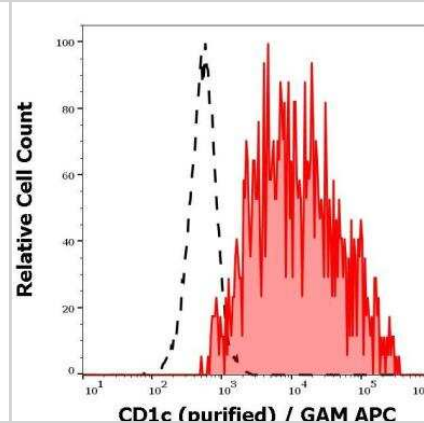
CD1c/BDCA-1 Antibody (L161) - BSA Free

Product Information	
Unit Size	0.1 mg
Concentration	Please see the vial label for concentration. If unlisted please contact technical services.
Storage	Store at 4C. Do not freeze.
Clonality	Monoclonal
Clone	L161
Preservative	0.09% Sodium Azide
Isotype	IgG1 Kappa
Purity	Protein A purified
Buffer	PBS (pH 7.4)
Target Molecular Weight	43 kDa
Product Description	
Host	Mouse
Gene ID	911
Gene Symbol	CD1C
Species	Human
Specificity/Sensitivity	The antibody MEM-97 reacts with CD20 (Bp35), a 33-37 kDa non-glycosylated membrane receptor with four transmembrane domains, expressed on B lymphocytes (it is lost on plasma cells), follicular dendritic cells, and at low levels on peripheral blood T lymphocytes.
Immunogen	human thymocytes
Product Application Details	
Applications	Flow Cytometry, Flow (Cell Surface), Immunohistochemistry, Immunoprecipitation
Recommended Dilutions	Flow Cytometry 1-4 ug/ml, Immunohistochemistry 1:10-1:500, Immunoprecipitation 1:10-1:500, Flow (Cell Surface)

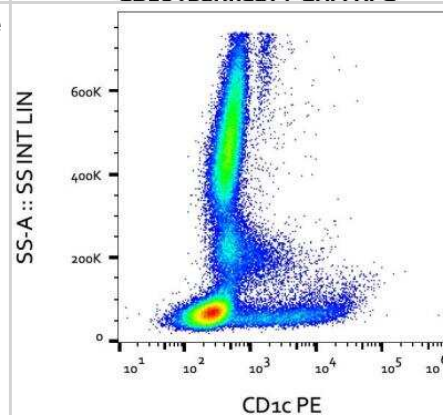


Images

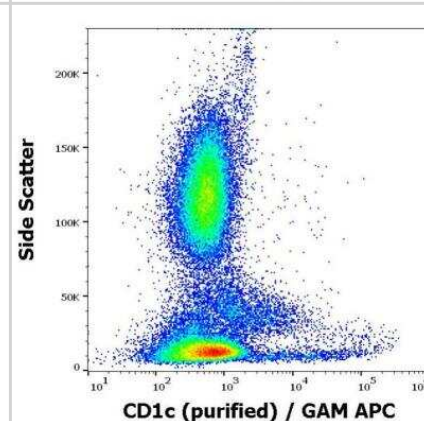
Flow Cytometry: CD1c/BDC4-1 Antibody (L161) [NBP2-62220] - Separation of human CD1c positive CD19 positive lymphocytes (red-filled) from neutrophil granulocytes (black-dashed) in flow cytometry analysis (surface staining) of human peripheral whole blood using anti-human CD1c (L161) purified antibody (concentration in sample 0,33 ug/ml, GAM APC).



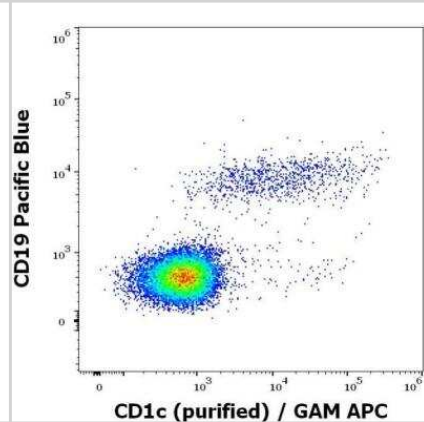
Flow Cytometry: CD1c/BDC4-1 Antibody (L161) [NBP2-62220] - Surface staining of human peripheral blood cells with anti-human CD1c (clone L161) PE.



Flow (Cell Surface): CD1c/BDC4-1 Antibody (L161) [NBP2-62220] - Surface staining pattern of human peripheral whole blood stained using anti-human CD1c (L161) purified antibody (concentration in sample 0,33 ug/ml, GAM APC).



Flow Cytometry: CD1c/BDC4-1 Antibody (L161) [NBP2-62220] - Multicolor surface staining of human lymphocytes stained using anti-human CD1c (L161) purified antibody (concentration in sample 0,33 ug/ml, GAM APC) and anti-human CD19 (LT19) APC antibody (20 ul reagent / 100 ul of peripheral whole blood).





Novus Biologicals USA

10730 E. Briarwood Avenue
Centennial, CO 80112
USA
Phone: 303.730.1950
Toll Free: 1.888.506.6887
Fax: 303.730.1966
nb-customerservice@bio-techne.com

Bio-Techne Canada

21 Canmotor Ave
Toronto, ON M8Z 4E6
Canada
Phone: 905.827.6400
Toll Free: 855.668.8722
Fax: 905.827.6402
canada.inquires@bio-techne.com

Bio-Techne Ltd

19 Barton Lane
Abingdon Science Park
Abingdon, OX14 3NB, United Kingdom
Phone: (44) (0) 1235 529449
Free Phone: 0800 37 34 15
Fax: (44) (0) 1235 533420
info.EMEA@bio-techne.com

General Contact Information

www.novusbio.com
Technical Support: nb-technical@bio-techne.com
Orders: nb-customerservice@bio-techne.com
General: novus@novusbio.com

Products Related to NBP2-62220

HAF007	Goat anti-Mouse IgG Secondary Antibody [HRP]
NB720-B	Rabbit anti-Mouse IgG (H+L) Secondary Antibody [Biotin]
NBP1-43319-0.5mg	Mouse IgG1 Kappa Isotype Control (P3.6.2.8.1)
H00000911-Q01-10ug	Recombinant Human CD1c/BDCA-1 GST (N-Term) Protein

Limitations

This product is for research use only and is not approved for use in humans or in clinical diagnosis. Primary Antibodies are guaranteed for 1 year from date of receipt.

For more information on our 100% guarantee, please visit www.novusbio.com/guarantee

Earn gift cards/discounts by submitting a review: www.novusbio.com/reviews/submit/NBP2-62220

Earn gift cards/discounts by submitting a publication using this product:
www.novusbio.com/publications

