

Product Datasheet

OPAL1 Antibody (OPAL1-01) - BSA Free NBP2-62210

Unit Size: 0.1 mg

Store at 4C. Do not freeze.

www.novusbio.com



technical@novusbio.com

Protocols, Publications, Related Products, Reviews, Research Tools and Images at:
www.novusbio.com/NBP2-62210

Updated 2/23/2025 v.20.1

Earn rewards for product
reviews and publications.

Submit a publication at www.novusbio.com/publications

Submit a review at www.novusbio.com/reviews/destination/NBP2-62210



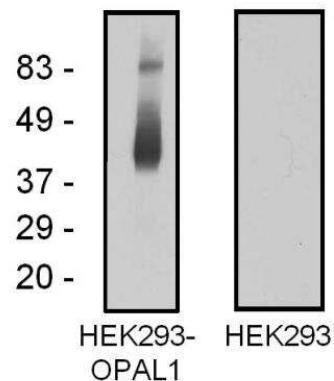
NBP2-62210

OPAL1 Antibody (OPAL1-01) - BSA Free

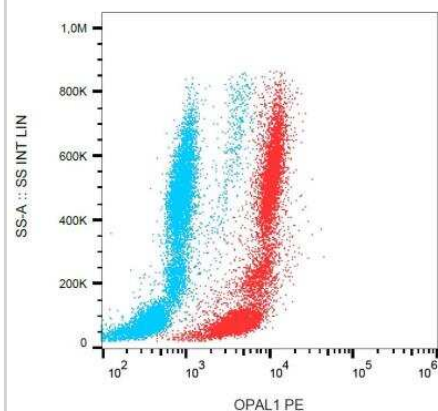
Product Information	
Unit Size	0.1 mg
Concentration	Please see the vial label for concentration. If unlisted please contact technical services.
Storage	Store at 4C. Do not freeze.
Clonality	Monoclonal
Clone	OPAL1-01
Preservative	0.09% Sodium Azide
Isotype	IgG2a
Purity	Protein A purified
Buffer	TBS (pH 8.0)
Product Description	
Host	Mouse
Gene ID	54838
Gene Symbol	WBP1L
Species	Human
Specificity/Sensitivity	The antibody HCG-61 reacts with beta-subunit of human chorionic gonadotropin, a 40 kDa hormone. hCG belongs to the glycoprotein hormone family together with lutropin (LH), follitropin (FSH) and thyrotropin (TSH). hCG is synthesised by trophoblastic cells of the placenta during pregnancy and stimulates the growth of corpus luteum. Following cross-reactivity (%) was determined by classic double-antibody RIA using unlabelled hormones: beta-hCG (77), alpha-hCG (1.3), hLH (0.86), hFSH (< 0.5), hTSH (< 0.5).
Immunogen	Recombinant fragment of human OPAL1 (amino acids 152-342)
Product Application Details	
Applications	Western Blot, Flow Cytometry, Flow (Intracellular)
Recommended Dilutions	Western Blot 1-2 ug/ml, Flow Cytometry 1-4 ug/ml, Flow (Intracellular) 1-4 ug/ml
Application Notes	WB: non-reducing conditions.

Images

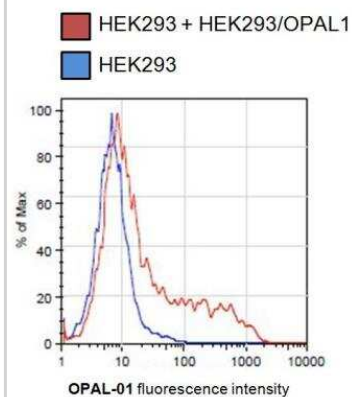
Western Blot: OPAL1 Antibody (OPAL1-01) [NBP2-62210] - Analysis of OPAL1 in OPAL1-transfected HEK293 cells using mouse monoclonal antibody OPAL1-01.



Flow Cytometry: OPAL1 Antibody (OPAL1-01) [NBP2-62210] - Analysis of OPAL1 in human peripheral blood + lyophilized SP2 cells using mouse monoclonal antibody anti-OPAL1 (OPAL1-01) PE.



Flow Cytometry: OPAL1 Antibody (OPAL1-01) [NBP2-62210] - Analysis of OPAL-transfected HEK293 cells using mouse monoclonal antibody OPAL1-01.





Novus Biologicals USA

10730 E. Briarwood Avenue
Centennial, CO 80112
USA
Phone: 303.730.1950
Toll Free: 1.888.506.6887
Fax: 303.730.1966
nb-customerservice@bio-techne.com

Bio-Techne Canada

21 Canmotor Ave
Toronto, ON M8Z 4E6
Canada
Phone: 905.827.6400
Toll Free: 855.668.8722
Fax: 905.827.6402
canada.inquires@bio-techne.com

Bio-Techne Ltd

19 Barton Lane
Abingdon Science Park
Abingdon, OX14 3NB, United Kingdom
Phone: (44) (0) 1235 529449
Free Phone: 0800 37 34 15
Fax: (44) (0) 1235 533420
info.EMEA@bio-techne.com

General Contact Information

www.novusbio.com
Technical Support: nb-technical@bio-techne.com
Orders: nb-customerservice@bio-techne.com
General: novus@novusbio.com

Products Related to NBP2-62210

HAF007	Goat anti-Mouse IgG Secondary Antibody [HRP]
NB720-B	Rabbit anti-Mouse IgG (H+L) Secondary Antibody [Biotin]
NBP1-96778	Mouse IgG2a Isotype Control (M2A)
NBP2-34045PEP	OPAL1 Recombinant Protein Antigen

Limitations

This product is for research use only and is not approved for use in humans or in clinical diagnosis. Primary Antibodies are guaranteed for 1 year from date of receipt.

For more information on our 100% guarantee, please visit www.novusbio.com/guarantee

Earn gift cards/discounts by submitting a review: www.novusbio.com/reviews/submit/NBP2-62210

Earn gift cards/discounts by submitting a publication using this product:
www.novusbio.com/publications

