

# Product Datasheet

## IgG1 Antibody (RM117) NBP2-62028

Unit Size: 100 ug

Store at -20C. Avoid freeze-thaw cycles.

[www.novusbio.com](http://www.novusbio.com)



[technical@novusbio.com](mailto:technical@novusbio.com)

### Publications: 1

Protocols, Publications, Related Products, Reviews, Research Tools and Images at:  
[www.novusbio.com/NBP2-62028](http://www.novusbio.com/NBP2-62028)

Updated 10/23/2024 v.20.1

Earn rewards for product  
reviews and publications.

Submit a publication at [www.novusbio.com/publications](http://www.novusbio.com/publications)

Submit a review at [www.novusbio.com/reviews/destination/NBP2-62028](http://www.novusbio.com/reviews/destination/NBP2-62028)



**NBP2-62028**

IgG1 Antibody (RM117)

<b>Product Information</b>	
<b>Unit Size</b>	100 ug
<b>Concentration</b>	1 mg/ml
<b>Storage</b>	Store at -20C. Avoid freeze-thaw cycles.
<b>Clonality</b>	Monoclonal
<b>Clone</b>	RM117
<b>Preservative</b>	0.09% Sodium Azide
<b>Isotype</b>	IgG
<b>Purity</b>	Protein A purified
<b>Buffer</b>	50% Glycerol/PBS, 1% BSA

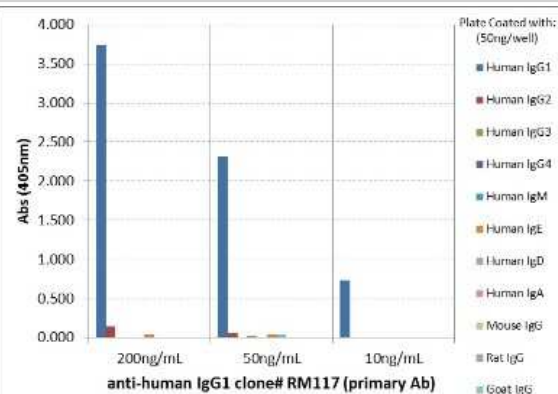
<b>Product Description</b>	
<b>Host</b>	Rabbit
<b>Species</b>	Human
<b>Specificity/Sensitivity</b>	This antibody reacts to the heavy chain of human IgG1. It does not cross react to any other IgG subclasses (IgG2, IgG3, or IgG4), and shows no cross reactivity to IgM, IgA, IgD, IgE. This antibody does not react to monkey (Cyno or Rhesus) IgG, mouse IgG, rat IgG, or goat IgG.
<b>Immunogen</b>	Peptide corresponding to the hinge region of Human IgG1

<b>Product Application Details</b>	
<b>Applications</b>	ELISA, Flow Cytometry, Immunocytochemistry/ Immunofluorescence, Immunohistochemistry, Immunohistochemistry-Paraffin, Sandwich ELISA Capture, Sandwich ELISA Detection
<b>Recommended Dilutions</b>	Flow Cytometry 2ug/ml-8ug/ml, ELISA, Immunohistochemistry 0.5ug/ml - 2ug/ml, Immunocytochemistry/ Immunofluorescence 0.5ug/ml - 2ug/ml, Immunohistochemistry-Paraffin 0.5ug/ml - 2ug/ml, Sandwich ELISA Capture 50 - 200ng/well, Sandwich ELISA Detection 0.05 - 0.2ug/ml

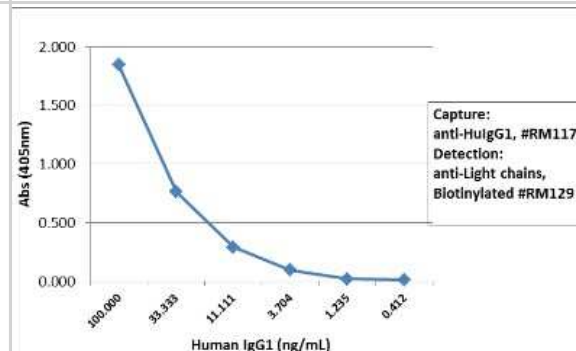


## Images

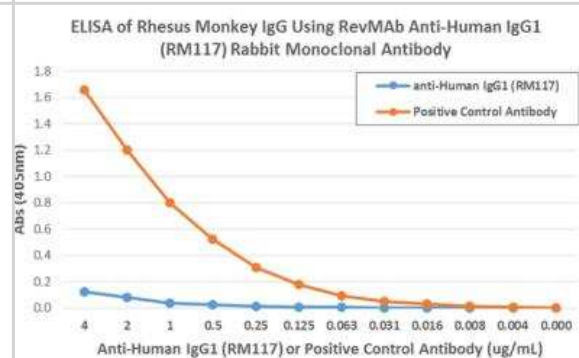
ELISA: IgG1 Antibody (RM117) [Unconjugated] [NBP2-62028] - ELISA of human immunoglobulins shows NBP2-62028 only reacts to human IgG1. No cross reactivity with Human IgG2, IgG3, IgG4, IgE, IgD, IgA, mouse IgG, rat IgG, or goat IgG. The plate was coated with different immunoglobulins. NBP2-62028 was used as the primary antibody. An alkaline phosphatase conjugated anti-rabbit IgG as the secondary antibody.



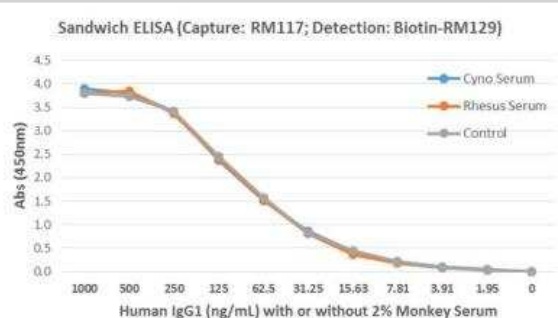
ELISA: IgG1 Antibody (RM117) [Unconjugated] [NBP2-62028] - Sandwich ELISA using NBP2-62028 as the capture antibody, and biotinylated anti-human light chains (kappa+lambda) antibody NBP2-77396 as the detection antibody, followed by an AP conjugated streptavidin.



ELISA: IgG1 Antibody (RM117) [Unconjugated] [NBP2-62028] - ELISA showing RM117 does not react to monkey IgG. The plate was coated with Rhesus monkey IgG. A serial dilution of RM117 and a monkey IgG binding antibody (positive control) was used as the detection antibody.



ELISA: IgG1 Antibody (RM117) [NBP2-62028] - Sandwich ELISA for detection of human IgG1 in monkey serum, using NBP2-62028 as the capture antibody and biotinylated-NBP2-77396 as the detection antibody. HRP conjugated streptavidin and TMB were used to yield the colorimetric reaction.



## Publications

Gobin J Assessment of High Purity Mesenchymal Stromal Cells Derived Extracellular Vesicles Presenting NRP1 Show Functional Suppression of Activated Immune Cells Thesis 2022-01-01 (IP, Human)



### **Novus Biologicals USA**

10730 E. Briarwood Avenue  
Centennial, CO 80112  
USA  
Phone: 303.730.1950  
Toll Free: 1.888.506.6887  
Fax: 303.730.1966  
nb-customerservice@bio-techne.com

### **Bio-Techne Canada**

21 Canmotor Ave  
Toronto, ON M8Z 4E6  
Canada  
Phone: 905.827.6400  
Toll Free: 855.668.8722  
Fax: 905.827.6402  
canada.inquires@bio-techne.com

### **Bio-Techne Ltd**

19 Barton Lane  
Abingdon Science Park  
Abingdon, OX14 3NB, United Kingdom  
Phone: (44) (0) 1235 529449  
Free Phone: 0800 37 34 15  
Fax: (44) (0) 1235 533420  
info.EMEA@bio-techne.com

### **General Contact Information**

www.novusbio.com  
Technical Support: nb-technical@bio-techne.com  
Orders: nb-customerservice@bio-techne.com  
General: novus@novusbio.com

### **Products Related to NBP2-62028**

---

HAF008	Goat anti-Rabbit IgG Secondary Antibody [HRP]
NB7160	Goat anti-Rabbit IgG (H+L) Secondary Antibody [HRP]
NBP2-24891	Rabbit IgG Isotype Control
MAB002	Mouse IgG1 Isotype Control (11711) [Unconjugated]

---

### **Limitations**

This product is for research use only and is not approved for use in humans or in clinical diagnosis. Primary Antibodies are guaranteed for 1 year from date of receipt.

For more information on our 100% guarantee, please visit [www.novusbio.com/guarantee](http://www.novusbio.com/guarantee)

Earn gift cards/discounts by submitting a review: [www.novusbio.com/reviews/submit/NBP2-62028](http://www.novusbio.com/reviews/submit/NBP2-62028)

Earn gift cards/discounts by submitting a publication using this product:  
[www.novusbio.com/publications](http://www.novusbio.com/publications)

