

Product Datasheet

IgE Antibody (RM122) [Biotin] NBP2-62027B

Unit Size: 50 ug

Store at -20C. Avoid freeze-thaw cycles.

www.novusbio.com



technical@novusbio.com

Protocols, Publications, Related Products, Reviews, Research Tools and Images at:
www.novusbio.com/NBP2-62027B

Updated 10/23/2024 v.20.1

Earn rewards for product
reviews and publications.

Submit a publication at www.novusbio.com/publications

Submit a review at www.novusbio.com/reviews/destination/NBP2-62027B



NBP2-62027B

IgE Antibody (RM122) [Biotin]

Product Information	
Unit Size	50 ug
Concentration	1 mg/ml
Storage	Store at -20C. Avoid freeze-thaw cycles.
Clonality	Monoclonal
Clone	RM122
Preservative	0.09% Sodium Azide
Isotype	IgG
Conjugate	Biotin
Purity	Protein A purified
Buffer	PBS, 50% Glycerol, 1% BSA

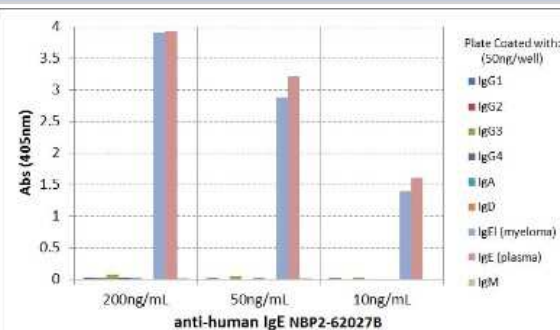
Product Description	
Host	Rabbit
Gene ID	3497
Gene Symbol	IGHE
Species	Human
Specificity/Sensitivity	This antibody reacts to human IgE. No cross reactivity with human IgG, IgM, IgD, or IgA.
Immunogen	Human IgE

Product Application Details	
Applications	ELISA, Sandwich ELISA Capture, Sandwich ELISA Detection
Recommended Dilutions	ELISA, Sandwich ELISA Capture 100 ng/well, Sandwich ELISA Detection 0.01 - 0.1 ug/ml
Application Notes	This primary antibody can also be used as a secondary antibody.

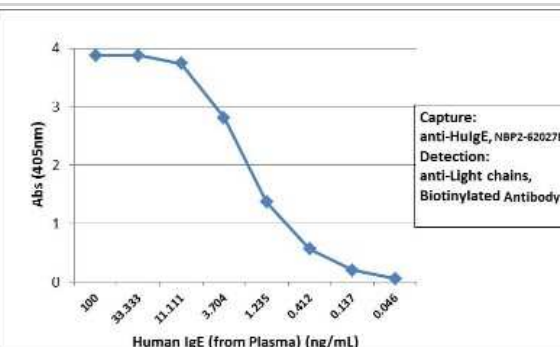


Images

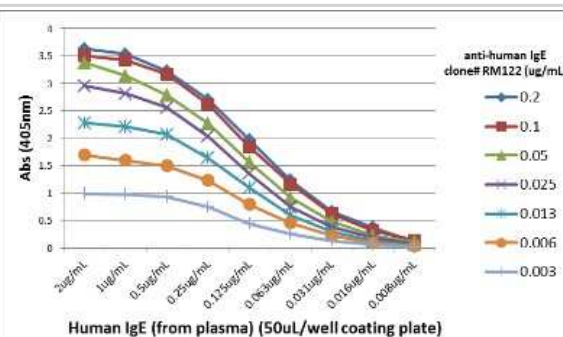
ELISA: IgE Antibody (RM122) [Biotin] [NBP2-62027B] - ELISA of human immunoglobulins shows NBP2-62027B reacts only to human IgE lambda from human myeloma plasma and the IgE from human plasma. No cross reactivity with Human IgG, IgM, IgD, or IgA. The plate was coated with different immunoglobulins. NBP2-62027B was used as the primary antibody. An alkaline phosphatase conjugated anti-rabbit IgG as the secondary antibody.



ELISA: IgE Antibody (RM122) [Biotin] [NBP2-62027B] - Sandwich ELISA using NBP2-62027B as the capture antibody (25 ng/well), and Biotinylated anti-human light chains (kappa + lambda) antibody as the detection antibody, followed by an alkaline phosphatase conjugated streptavidin.



ELISA: IgE Antibody (RM122) [Biotin] [NBP2-62027B] - A titer ELISA using NBP2-62027B. The plate was coated with different amounts of human IgE. A serial dilution of NBP2-62027B was used as the primary antibody. An alkaline phosphatase conjugated anti-rabbit IgG as the secondary antibody.





Novus Biologicals USA

10730 E. Briarwood Avenue
Centennial, CO 80112
USA
Phone: 303.730.1950
Toll Free: 1.888.506.6887
Fax: 303.730.1966
nb-customerservice@bio-techne.com

Bio-Techne Canada

21 Canmotor Ave
Toronto, ON M8Z 4E6
Canada
Phone: 905.827.6400
Toll Free: 855.668.8722
Fax: 905.827.6402
canada.inquires@bio-techne.com

Bio-Techne Ltd

19 Barton Lane
Abingdon Science Park
Abingdon, OX14 3NB, United Kingdom
Phone: (44) (0) 1235 529449
Free Phone: 0800 37 34 15
Fax: (44) (0) 1235 533420
info.EMEA@bio-techne.com

General Contact Information

www.novusbio.com
Technical Support: nb-technical@bio-techne.com
Orders: nb-customerservice@bio-techne.com
General: novus@novusbio.com

Products Related to NBP2-62027B

NBP2-24891B	Rabbit IgG Isotype Control [Biotin]
210-TA-005	TNF-alpha [Unconjugated]
MAB9935-100	Rat anti-Mouse IgE Secondary Antibody (343527) [Unconjugated]
M6000B-1	IL-6 [HRP]

Limitations

This product is for research use only and is not approved for use in humans or in clinical diagnosis. Primary Antibodies are guaranteed for 1 year from date of receipt.

For more information on our 100% guarantee, please visit www.novusbio.com/guarantee

Earn gift cards/discounts by submitting a review: www.novusbio.com/reviews/submit/NBP2-62027B

Earn gift cards/discounts by submitting a publication using this product:
www.novusbio.com/publications

