

# Product Datasheet

## Kappa Light Chain Antibody (RM126) [Biotin] NBP2-62020B

Unit Size: 50 ug

Store at -20C. Avoid freeze-thaw cycles.

[www.novusbio.com](http://www.novusbio.com)



[technical@novusbio.com](mailto:technical@novusbio.com)

Protocols, Publications, Related Products, Reviews, Research Tools and Images at:  
[www.novusbio.com/NBP2-62020B](http://www.novusbio.com/NBP2-62020B)

Updated 10/23/2024 v.20.1

Earn rewards for product  
reviews and publications.

Submit a publication at [www.novusbio.com/publications](http://www.novusbio.com/publications)

Submit a review at [www.novusbio.com/reviews/destination/NBP2-62020B](http://www.novusbio.com/reviews/destination/NBP2-62020B)



**NBP2-62020B**

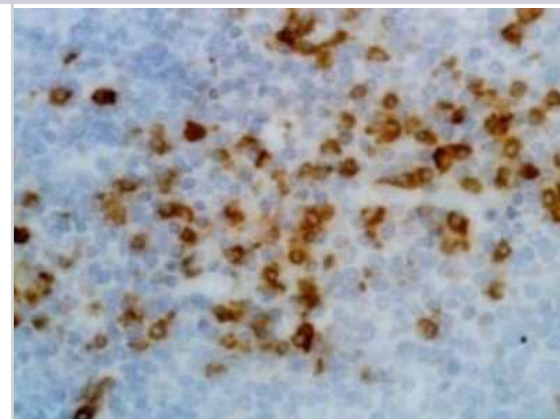
Kappa Light Chain Antibody (RM126) [Biotin]

Product Information	
Unit Size	50 ug
Concentration	1 mg/ml
Storage	Store at -20C. Avoid freeze-thaw cycles.
Clonality	Monoclonal
Clone	RM126
Preservative	0.09% Sodium Azide
Isotype	IgG
Conjugate	Biotin
Purity	Protein A purified
Buffer	PBS, 50% Glycerol, 1% BSA
Product Description	
Host	Rabbit
Gene ID	3514
Gene Symbol	IGKC
Species	Human
Specificity/Sensitivity	This antibody reacts to the kappa light chain of human immunoglobulins, and does not react to the lambda light chain. This antibody does not react to monkey (Cyno or Rhesus) IgG, mouse IgG, rat IgG, or goat IgG.
Immunogen	Human IgG
Product Application Details	
Applications	ELISA, Flow Cytometry, Immunocytochemistry/ Immunofluorescence, Immunohistochemistry
Recommended Dilutions	Flow Cytometry 0.5ug/ml-2ug/ml, ELISA 0.05ug/ml - 0.2ug/ml, Immunohistochemistry 0.5ug/ml - 2ug/ml, Immunocytochemistry/ Immunofluorescence 0.5ug/ml - 2ug/ml
Application Notes	This primary antibody can also be used as a secondary antibody.

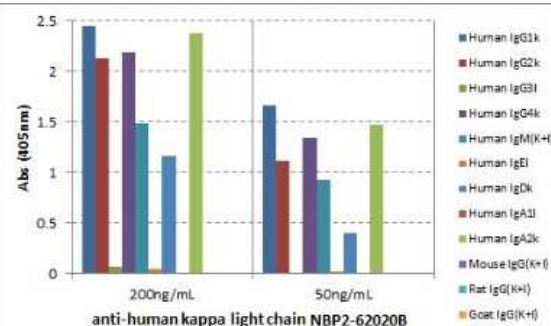


## Images

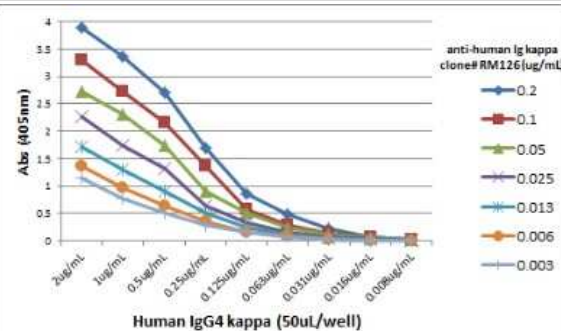
Immunohistochemistry: Kappa Light Chain Antibody (RM126) [Biotin] [NBP2-62020B] - Immunohistochemistry of Human Tonsil using Anti-Kappa Light Chain antibody NBP2-62020B.



ELISA: Kappa Light Chain Antibody (RM126) [Biotin] [NBP2-62020B] - ELISA of human immunoglobulins shows NBP2-62020B reacts to the kappa light chain of human immunoglobulins. No cross reactivity with the lambda light chain, mouse IgG, rat IgG, or goat IgG. The plate was coated with different immunoglobulins. NBP2-62020B was used as the primary antibody. An alkaline phosphatase conjugated anti-rabbit IgG as the secondary antibody.



ELISA: Kappa Light Chain Antibody (RM126) [Biotin] [NBP2-62020B] - A titer ELISA using NBP2-62020B. The plate was coated with different amounts of human IgG4k. A serial dilution of NBP2-62020B was used as the primary antibody. An alkaline phosphatase conjugated anti-rabbit IgG as the secondary antibody.





### **Novus Biologicals USA**

10730 E. Briarwood Avenue  
Centennial, CO 80112  
USA  
Phone: 303.730.1950  
Toll Free: 1.888.506.6887  
Fax: 303.730.1966  
nb-customerservice@bio-techne.com

### **Bio-Techne Canada**

21 Canmotor Ave  
Toronto, ON M8Z 4E6  
Canada  
Phone: 905.827.6400  
Toll Free: 855.668.8722  
Fax: 905.827.6402  
canada.inquires@bio-techne.com

### **Bio-Techne Ltd**

19 Barton Lane  
Abingdon Science Park  
Abingdon, OX14 3NB, United Kingdom  
Phone: (44) (0) 1235 529449  
Free Phone: 0800 37 34 15  
Fax: (44) (0) 1235 533420  
info.EMEA@bio-techne.com

### **General Contact Information**

[www.novusbio.com](http://www.novusbio.com)  
Technical Support: nb-technical@bio-techne.com  
Orders: nb-customerservice@bio-techne.com  
General: novus@novusbio.com

### **Products Related to NBP2-62020B**

NBP2-24891B	Rabbit IgG Isotype Control [Biotin]
H00003514-P01-10ug	Recombinant Human Kappa Light Chain GST (N-Term) Protein
243-B3-002	TGF-beta 3 [Unconjugated]
NB7463	Goat anti-Human Kappa Light Chain Secondary Antibody

### **Limitations**

This product is for research use only and is not approved for use in humans or in clinical diagnosis. Primary Antibodies are guaranteed for 1 year from date of receipt.

For more information on our 100% guarantee, please visit [www.novusbio.com/guarantee](http://www.novusbio.com/guarantee)

Earn gift cards/discounts by submitting a review: [www.novusbio.com/reviews/submit/NBP2-62020B](http://www.novusbio.com/reviews/submit/NBP2-62020B)

Earn gift cards/discounts by submitting a publication using this product:  
[www.novusbio.com/publications](http://www.novusbio.com/publications)

