

Product Datasheet

KDEL Antibody (2C1) - BSA Free NBP2-61926

Unit Size: 100 ug

Store at 4C short term. Aliquot and store at -20C long term. Avoid freeze-thaw cycles.

www.novusbio.com



technical@novusbio.com

Protocols, Publications, Related Products, Reviews, Research Tools and Images at:
www.novusbio.com/NBP2-61926

Updated 2/23/2025 v.20.1

Earn rewards for product
reviews and publications.

Submit a publication at www.novusbio.com/publications

Submit a review at www.novusbio.com/reviews/destination/NBP2-61926



NBP2-61926

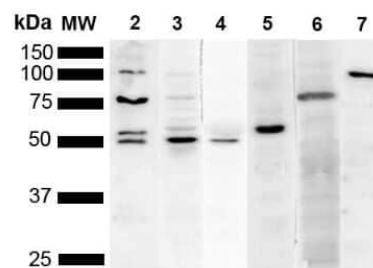
KDEL Antibody (2C1) - BSA Free

Product Information	
Unit Size	100 ug
Concentration	1 mg/ml
Storage	Store at 4C short term. Aliquot and store at -20C long term. Avoid freeze-thaw cycles.
Clonality	Monoclonal
Clone	2C1
Preservative	0.09% Sodium Azide
Isotype	IgG1
Purity	Protein G purified
Buffer	PBS (pH 7.4), 50% Glycerol
Product Description	
Host	Mouse
Gene ID	79070
Gene Symbol	POGLUT2
Species	Human, Mouse, Rat
Specificity/Sensitivity	Detects KDEL tagged proteins.
Immunogen	KDEL peptide (C-AVKDEL -COOH) conjugated at the N-terminal to Bovine Serum Albumin (BSA)
Product Application Details	
Applications	Western Blot, Immunohistochemistry
Recommended Dilutions	Western Blot 1:1000, Immunohistochemistry 1:25
Application Notes	A 1:1000 dilution of this antibody was sufficient for detection of KDEL in 10 ug of HeLa cell lysates by ECL immunoblot analysis using goat anti-mouse IgG:HRP as the secondary antibody.

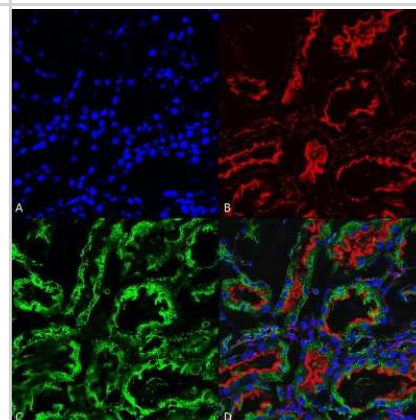


Images

Western Blot: KDEL Antibody (2C1) [NBP2-61926] - Western Blot analysis of Human Cervical cancer cell line (HeLa) lysate showing detection of Multiple KDEL protein using Mouse Anti-KDEL Monoclonal Antibody, Clone 2C1 (NBP2-61926). Lane 1: Molecular Weight Ladder (MW). Lane 2: Anti-KDEL (NBP2-61926). Lane 3: Anti-KDEL control (SPC-109). Lane 4: Anti-PDI control (SPC-114). Lane 5: Anti-Calreticulin control (SPC-122). Lane 6: Anti-GRP78 control (SPC-107). Lane 7: Anti-GRP94 control (SPC-101).. Load: 10 ug. Block: 5% Skim Milk powder in TBST. Primary Antibody: Mouse Anti-KDEL Monoclonal Antibody (NBP2-61926) at 1:1000 for 2 hours at RT. Secondary Antibody: Goat Anti-Mouse IgG:HRP at 1:5000 for 1 hour at RT. Color Development: ECL solution for 5 min in RT. Predicted/Observed Size: Multiple.



Immunohistochemistry: KDEL Antibody (2C1) [NBP2-61926] - Immunohistochemistry analysis using Mouse Anti-KDEL Monoclonal Antibody, Clone 2C1 (NBP2-61926). Tissue: kidney. Species: Rat. Fixation: Formalin fixed, paraffin embedded. Primary Antibody: Mouse Anti-KDEL Monoclonal Antibody (NBP2-61926) at 1:25 for 1 hour at RT. Secondary Antibody: Goat Anti-Mouse IgG: Alexa Fluor 488. Counterstain: Actin-binding Phalloidin-Alexa Fluor 633; DAPI (blue) nuclear stain. Magnification: 63X. (A) DAPI (blue) nuclear stain. (B) Phalloidin Alex Fluor 633 F-Actin stain. (C) KDEL Antibody (D) Composite.





Novus Biologicals USA

10730 E. Briarwood Avenue
Centennial, CO 80112
USA
Phone: 303.730.1950
Toll Free: 1.888.506.6887
Fax: 303.730.1966
nb-customerservice@bio-techne.com

Bio-Techne Canada

21 Canmotor Ave
Toronto, ON M8Z 4E6
Canada
Phone: 905.827.6400
Toll Free: 855.668.8722
Fax: 905.827.6402
canada.inquires@bio-techne.com

Bio-Techne Ltd

19 Barton Lane
Abingdon Science Park
Abingdon, OX14 3NB, United Kingdom
Phone: (44) (0) 1235 529449
Free Phone: 0800 37 34 15
Fax: (44) (0) 1235 533420
info.EMEA@bio-techne.com

General Contact Information

www.novusbio.com
Technical Support: nb-technical@bio-techne.com
Orders: nb-customerservice@bio-techne.com
General: novus@novusbio.com

Products Related to NBP2-61926

HAF007	Goat anti-Mouse IgG Secondary Antibody [HRP]
NB720-B	Rabbit anti-Mouse IgG (H+L) Secondary Antibody [Biotin]
NBP1-97005-0.5mg	Mouse IgG1 Isotype Control (MG1)
H00079070-P01-10ug	Recombinant Human KDEL GST (N-Term) Protein

Limitations

This product is for research use only and is not approved for use in humans or in clinical diagnosis. Primary Antibodies are guaranteed for 1 year from date of receipt.

For more information on our 100% guarantee, please visit www.novusbio.com/guarantee

Earn gift cards/discounts by submitting a review: www.novusbio.com/reviews/submit/NBP2-61926

Earn gift cards/discounts by submitting a publication using this product:
www.novusbio.com/publications

