

Product Datasheet

GRHL2 Antibody (CL3760) - BSA Free NBP2-61634

Unit Size: 100 ul

Store at 4C short term. Aliquot and store at -20C long term. Avoid freeze-thaw cycles.

www.novusbio.com



technical@novusbio.com

Protocols, Publications, Related Products, Reviews, Research Tools and Images at:
www.novusbio.com/NBP2-61634

Updated 2/27/2025 v.20.1

Earn rewards for product
reviews and publications.

Submit a publication at www.novusbio.com/publications

Submit a review at www.novusbio.com/reviews/destination/NBP2-61634



NBP2-61634

GRHL2 Antibody (CL3760) - BSA Free

Product Information

Unit Size	100 ul
Concentration	Concentrations vary lot to lot. See vial label for concentration. If unlisted please contact technical services.
Storage	Store at 4C short term. Aliquot and store at -20C long term. Avoid freeze-thaw cycles.
Clonality	Monoclonal
Clone	CL3760
Preservative	0.02% Sodium Azide
Isotype	IgG1
Purity	Protein A purified
Buffer	PBS (pH 7.2) and 40% Glycerol

Product Description

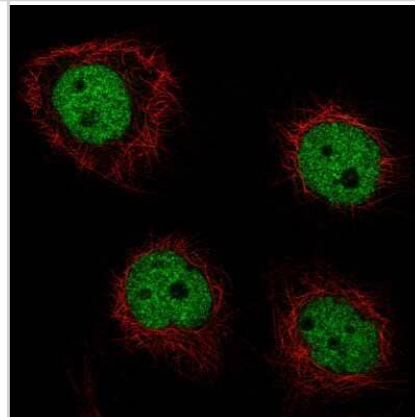
Host	Mouse
Gene ID	79977
Gene Symbol	GRHL2
Species	Human
Reactivity Notes	Expected to cross react based on sequence identity: Mouse (87%), Rat (87%).
Immunogen	This antibody was developed using a recombinant protein derived from Q6ISB3, with the exact immunogen sequence remaining proprietary.

Product Application Details

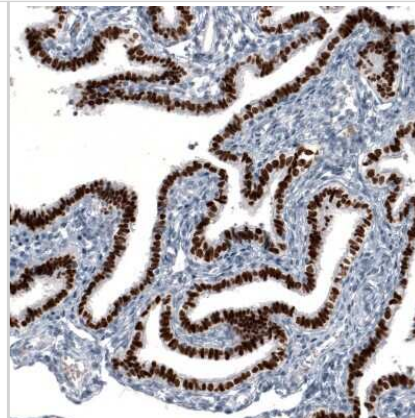
Applications	Immunocytochemistry/ Immunofluorescence, Immunohistochemistry, Immunohistochemistry-Paraffin
Recommended Dilutions	Immunohistochemistry 1:5000 - 1:10000, Immunocytochemistry/ Immunofluorescence 2-10 ug/ml, Immunohistochemistry-Paraffin 1:5000 - 1:10000
Application Notes	For IHC-Paraffin, HIER pH 6 retrieval is recommended. For ICC/IF, PFA/Triton X-100 is recommended for fixation/permeabilization.

Images

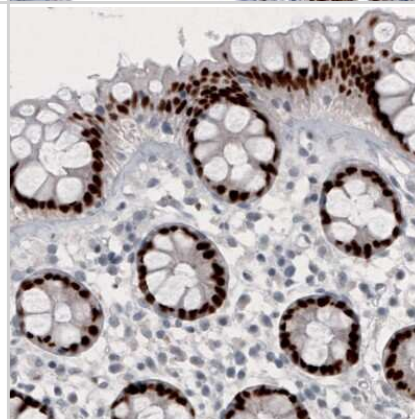
Immunocytochemistry/Immunofluorescence: GRHL2 Antibody (CL3760) [NBP2-61634] - Staining of A-431 cells using the Anti-GRHL2 monoclonal antibody, showing specific staining in the nucleoplasm in green. Microtubule- and nuclear probes are visualized in red and blue, respectively (where available).



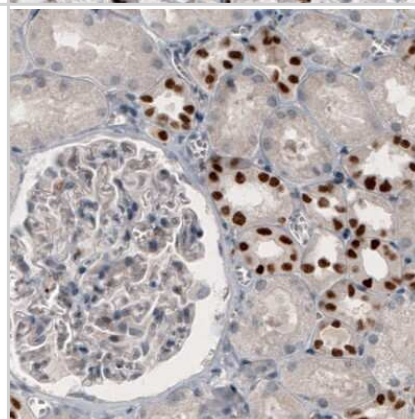
Immunohistochemistry-Paraffin: GRHL2 Antibody (CL3760) [NBP2-61634] - Staining of human fallopian tube shows strong nuclear positivity in glandular cells.



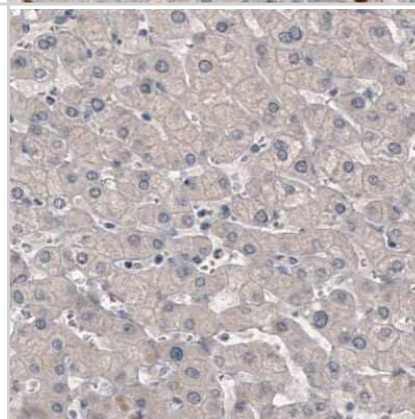
Immunohistochemistry-Paraffin: GRHL2 Antibody (CL3760) [NBP2-61634] - Staining of human rectum shows strong nuclear immunoreactivity in glandular cells.



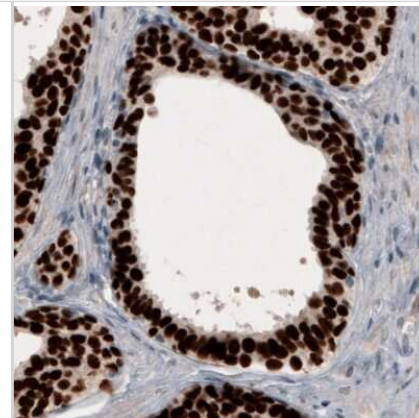
Immunohistochemistry-Paraffin: GRHL2 Antibody (CL3760) [NBP2-61634] - Staining of human kidney shows nuclear positivity in a subset of renal tubules.



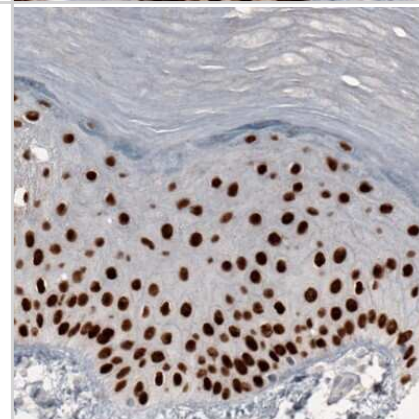
Immunohistochemistry-Paraffin: GRHL2 Antibody (CL3760) [NBP2-61634] - Staining of human liver shows absence of immunoreactivity (negative control).



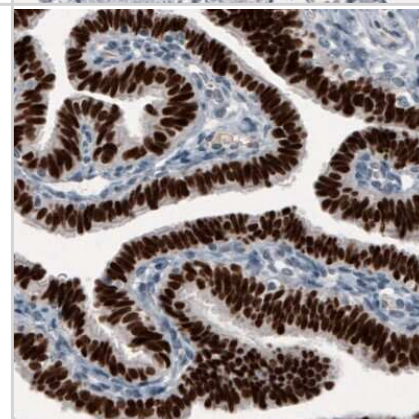
Immunohistochemistry-Paraffin: GRHL2 Antibody (CL3760) [NBP2-61634] - Staining of human prostate shows strong nuclear immunoreactivity in glandular cells.



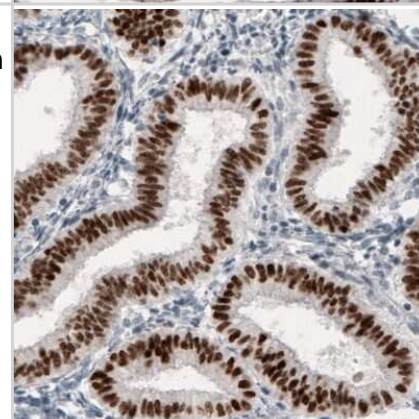
Immunohistochemistry-Paraffin: GRHL2 Antibody (CL3760) [NBP2-61634] - Staining of human skin shows strong nuclear positivity in epithelial cells.



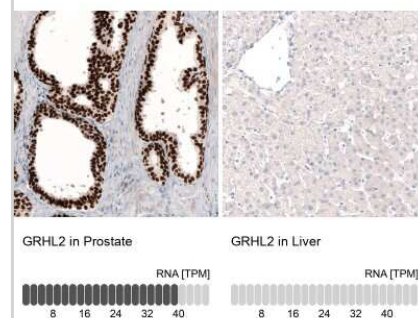
Immunohistochemistry-Paraffin: GRHL2 Antibody (CL3760) [NBP2-61634] - Staining of human fallopian tube shows strong nuclear immunoreactivity in glandular cells.



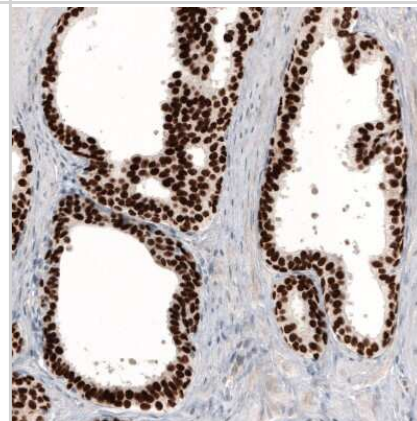
Immunohistochemistry-Paraffin: GRHL2 Antibody (CL3760) [NBP2-61634] - Staining of human endometrium tube shows nuclear positivity in glandular cells.



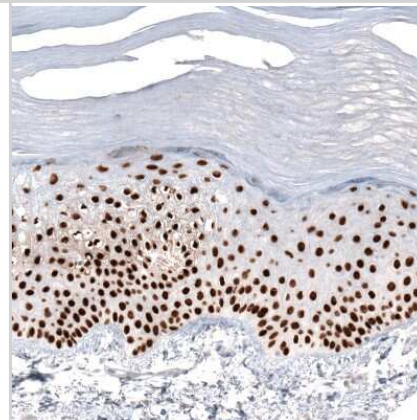
Immunohistochemistry-Paraffin: GRHL2 Antibody (CL3760) [NBP2-61634] - Analysis in human prostate and liver tissues using NBP2-61634 antibody. Corresponding GRHL2 RNA-seq data are presented for the same tissues.



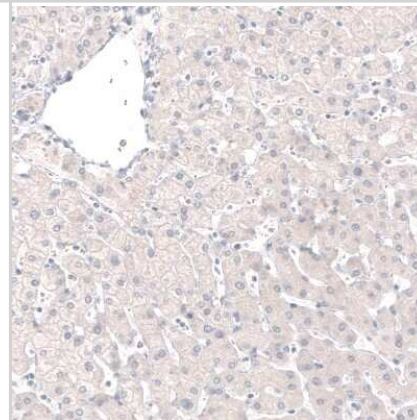
Immunohistochemistry-Paraffin: GRHL2 Antibody (CL3760) [NBP2-61634] - Staining of human prostate shows strong nuclear positivity in glandular cells.



Immunohistochemistry-Paraffin: GRHL2 Antibody (CL3760) [NBP2-61634] - Staining of human skin shows strong nuclear positivity in squamous epithelial cells.



Immunohistochemistry-Paraffin: GRHL2 Antibody (CL3760) [NBP2-61634] - Staining of human liver shows no positivity in hepatocytes as expected.





Novus Biologicals USA

10730 E. Briarwood Avenue
Centennial, CO 80112
USA
Phone: 303.730.1950
Toll Free: 1.888.506.6887
Fax: 303.730.1966
nb-customerservice@bio-techne.com

Bio-Techne Canada

21 Canmotor Ave
Toronto, ON M8Z 4E6
Canada
Phone: 905.827.6400
Toll Free: 855.668.8722
Fax: 905.827.6402
canada.inquires@bio-techne.com

Bio-Techne Ltd

19 Barton Lane
Abingdon Science Park
Abingdon, OX14 3NB, United Kingdom
Phone: (44) (0) 1235 529449
Free Phone: 0800 37 34 15
Fax: (44) (0) 1235 533420
info.EMEA@bio-techne.com

General Contact Information

www.novusbio.com
Technical Support: nb-technical@bio-techne.com
Orders: nb-customerservice@bio-techne.com
General: novus@novusbio.com

Products Related to NBP2-61634

NBP2-61634PEP	GRHL2 Recombinant Protein Antigen
HAF007	Goat anti-Mouse IgG Secondary Antibody [HRP]
NB720-B	Rabbit anti-Mouse IgG (H+L) Secondary Antibody [Biotin]
NBP1-97005-0.5mg	Mouse IgG1 Isotype Control (MG1)

Limitations

This product is for research use only and is not approved for use in humans or in clinical diagnosis. Primary Antibodies are guaranteed for 1 year from date of receipt.

For more information on our 100% guarantee, please visit www.novusbio.com/guarantee

Earn gift cards/discounts by submitting a review: www.novusbio.com/reviews/submit/NBP2-61634

Earn gift cards/discounts by submitting a publication using this product:
www.novusbio.com/publications

