

# Product Datasheet

## TLE3 Antibody (CL3573) - BSA Free NBP2-61621

Unit Size: 100 ul

Store at 4C short term. Aliquot and store at -20C long term. Avoid freeze-thaw cycles.

[www.novusbio.com](http://www.novusbio.com)



[technical@novusbio.com](mailto:technical@novusbio.com)

Protocols, Publications, Related Products, Reviews, Research Tools and Images at:  
[www.novusbio.com/NBP2-61621](http://www.novusbio.com/NBP2-61621)

Updated 2/27/2025 v.20.1

Earn rewards for product  
reviews and publications.

Submit a publication at [www.novusbio.com/publications](http://www.novusbio.com/publications)

Submit a review at [www.novusbio.com/reviews/destination/NBP2-61621](http://www.novusbio.com/reviews/destination/NBP2-61621)



**NBP2-61621**

TLE3 Antibody (CL3573) - BSA Free

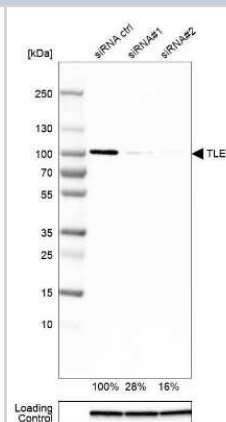
Product Information	
Unit Size	100 ul
Concentration	Concentrations vary lot to lot. See vial label for concentration. If unlisted please contact technical services.
Storage	Store at 4C short term. Aliquot and store at -20C long term. Avoid freeze-thaw cycles.
Clonality	Monoclonal
Clone	CL3573
Preservative	0.02% Sodium Azide
Isotype	IgG1
Purity	Protein A purified
Buffer	PBS (pH 7.2) and 40% Glycerol

Product Description	
Host	Mouse
Gene ID	7090
Gene Symbol	TLE3
Species	Human
Reactivity Notes	Please note that this antibody is reactive to Mouse and derived from the same host, Mouse. Mouse-On-Mouse blocking reagent may be needed for IHC and ICC experiments to reduce high background signal. You can find these reagents under catalog numbers PK-2200-NB and MP-2400-NB. Please contact Technical Support if you have any questions
Immunogen	This antibody was developed using a recombinant protein derived from Q04726, with the exact immunogen sequence remaining proprietary.

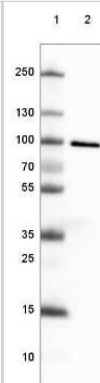
Product Application Details	
Applications	Western Blot, Immunocytochemistry/ Immunofluorescence, Immunohistochemistry, Immunohistochemistry-Paraffin, Knockdown Validated
Recommended Dilutions	Western Blot 1 ug/ml, Immunohistochemistry 1:10000 - 1:20000, Immunocytochemistry/ Immunofluorescence 2-10 ug/ml, Immunohistochemistry-Paraffin 1:10000 - 1:20000, Knockdown Validated
Application Notes	For IHC-Paraffin, HIER pH 6 retrieval is recommended. For ICC/IF, PFA/Triton X-100 is recommended for fixation/permeabilization.

**Images**

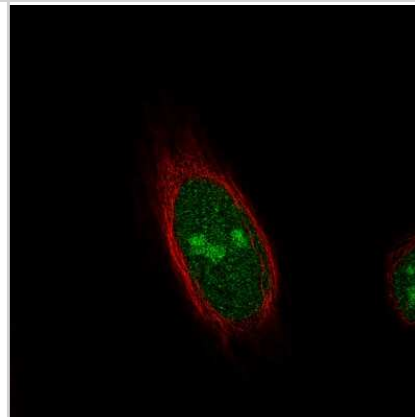
Western Blot: TLE3 Antibody (CL3573) [NBP2-61621] - Western blot analysis in HEK293 cells transfected with control siRNA, target specific siRNA probe #1 and #2, using Anti-TLE3 antibody. Remaining relative intensity is presented. Loading control: Anti-GAPDH.



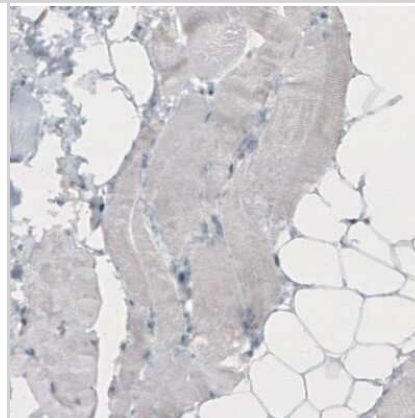
Western Blot: TLE3 Antibody (CL3573) [NBP2-61621] - Lane 1: Marker  
 [kDa] 250, 130, 100, 70, 55, 35, 25, 15, 10  
 Lane 2: Human cell line HEK 293



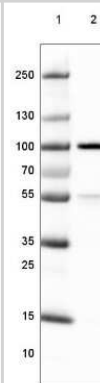
Immunocytochemistry/Immunofluorescence: TLE3 Antibody (CL3573) [NBP2-61621] - Staining of HeLa cells using the Anti-TLE3 monoclonal antibody, showing specific staining in the nucleoplasm and nucleoli in green. Microtubule- and nuclear probes are visualized in red and blue, respectively (where available).



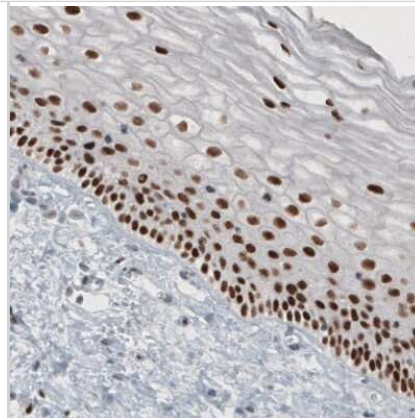
Immunohistochemistry-Paraffin: TLE3 Antibody (CL3573) [NBP2-61621]  
 - Staining of human skeletal muscle shows absence of immunoreactivity (negative control).



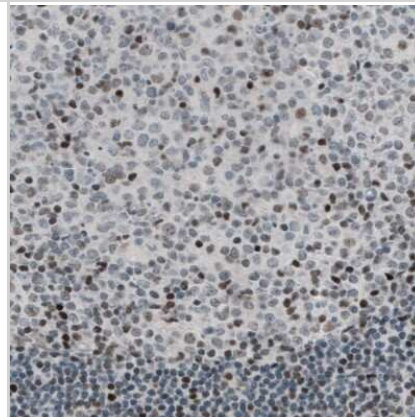
Western Blot: TLE3 Antibody (CL3573) [NBP2-61621] - Lane 1: Marker  
 [kDa] 250, 130, 100, 70, 55, 35, 25, 15, 10  
 Lane 2: Human cell line HeLa nuclear extract



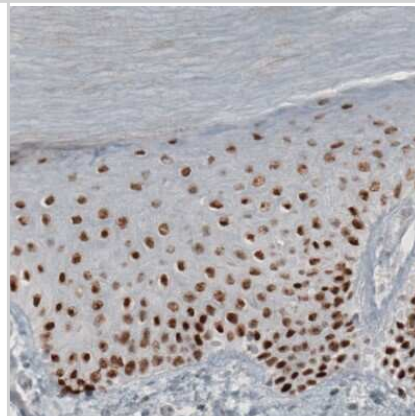
Immunohistochemistry-Paraffin: TLE3 Antibody (CL3573) [NBP2-61621]  
- Staining of human cervix shows strong nuclear immunoreactivity in epithelial cells.



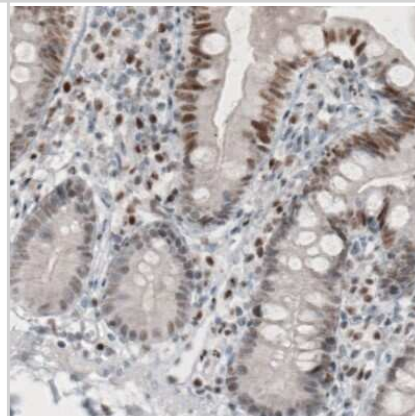
Immunohistochemistry-Paraffin: TLE3 Antibody (CL3573) [NBP2-61621]  
- Staining of human tonsil shows nuclear immunoreactivity in a subset of lymphoid cells.



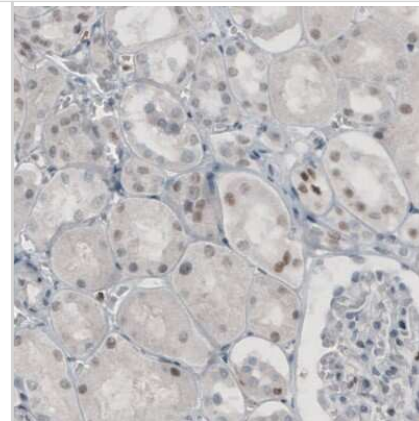
Immunohistochemistry-Paraffin: TLE3 Antibody (CL3573) [NBP2-61621]  
- Staining of human oral mucosa shows strong nuclear positivity in epithelial cells.



Immunohistochemistry-Paraffin: TLE3 Antibody (CL3573) [NBP2-61621]  
- Staining of human small intestine shows moderate nuclear immunoreactivity in glandular epithelium cells.



Immunohistochemistry-Paraffin: TLE3 Antibody (CL3573) [NBP2-61621]  
- Staining of human kidney shows weak to moderate nuclear positivity in a subset of cells.





### **Novus Biologicals USA**

10730 E. Briarwood Avenue  
Centennial, CO 80112  
USA  
Phone: 303.730.1950  
Toll Free: 1.888.506.6887  
Fax: 303.730.1966  
nb-customerservice@bio-techne.com

### **Bio-Techne Canada**

21 Canmotor Ave  
Toronto, ON M8Z 4E6  
Canada  
Phone: 905.827.6400  
Toll Free: 855.668.8722  
Fax: 905.827.6402  
canada.inquires@bio-techne.com

### **Bio-Techne Ltd**

19 Barton Lane  
Abingdon Science Park  
Abingdon, OX14 3NB, United Kingdom  
Phone: (44) (0) 1235 529449  
Free Phone: 0800 37 34 15  
Fax: (44) (0) 1235 533420  
info.EMEA@bio-techne.com

### **General Contact Information**

www.novusbio.com  
Technical Support: nb-technical@bio-techne.com  
Orders: nb-customerservice@bio-techne.com  
General: novus@novusbio.com

### **Products Related to NBP2-61621**

---

NBP2-61621PEP	TLE3 Recombinant Protein Antigen
HAF007	Goat anti-Mouse IgG Secondary Antibody [HRP]
NB720-B	Rabbit anti-Mouse IgG (H+L) Secondary Antibody [Biotin]
NBP1-97005-0.5mg	Mouse IgG1 Isotype Control (MG1)

---

### **Limitations**

This product is for research use only and is not approved for use in humans or in clinical diagnosis. Primary Antibodies are guaranteed for 1 year from date of receipt.

For more information on our 100% guarantee, please visit [www.novusbio.com/guarantee](http://www.novusbio.com/guarantee)

Earn gift cards/discounts by submitting a review: [www.novusbio.com/reviews/submit/NBP2-61621](http://www.novusbio.com/reviews/submit/NBP2-61621)

Earn gift cards/discounts by submitting a publication using this product:  
[www.novusbio.com/publications](http://www.novusbio.com/publications)

