

# Product Datasheet

## LAMP-1/CD107a Antibody (CL3482) - BSA Free NBP2-61619

Unit Size: 100 ul

Store at 4C short term. Aliquot and store at -20C long term. Avoid freeze-thaw cycles.

[www.novusbio.com](http://www.novusbio.com)



[technical@novusbio.com](mailto:technical@novusbio.com)

### Publications: 1

Protocols, Publications, Related Products, Reviews, Research Tools and Images at:  
[www.novusbio.com/NBP2-61619](http://www.novusbio.com/NBP2-61619)

Updated 2/27/2025 v.20.1

Earn rewards for product  
reviews and publications.

Submit a publication at [www.novusbio.com/publications](http://www.novusbio.com/publications)

Submit a review at [www.novusbio.com/reviews/destination/NBP2-61619](http://www.novusbio.com/reviews/destination/NBP2-61619)



**NBP2-61619**

LAMP-1/CD107a Antibody (CL3482) - BSA Free

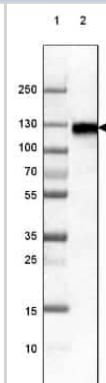
Product Information	
Unit Size	100 ul
Concentration	Concentrations vary lot to lot. See vial label for concentration. If unlisted please contact technical services.
Storage	Store at 4C short term. Aliquot and store at -20C long term. Avoid freeze-thaw cycles.
Clonality	Monoclonal
Clone	CL3482
Preservative	0.02% Sodium Azide
Isotype	IgG1
Purity	Protein A purified
Buffer	PBS (pH 7.2) and 40% Glycerol

Product Description	
Host	Mouse
Gene ID	3916
Gene Symbol	LAMP1
Species	Human
Immunogen	This antibody was developed using a recombinant protein derived from P11279, with the exact immunogen sequence remaining proprietary.

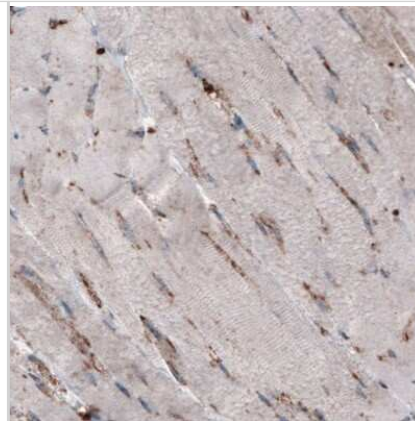
Product Application Details	
Applications	Western Blot, Immunohistochemistry, Immunohistochemistry-Paraffin
Recommended Dilutions	Western Blot 1 ug/ml, Immunohistochemistry 1:10000 - 1:20000, Immunohistochemistry-Paraffin 1:10000 - 1:20000
Application Notes	IHC-Paraffin HIER pH6 retrieval is recommended.

**Images**

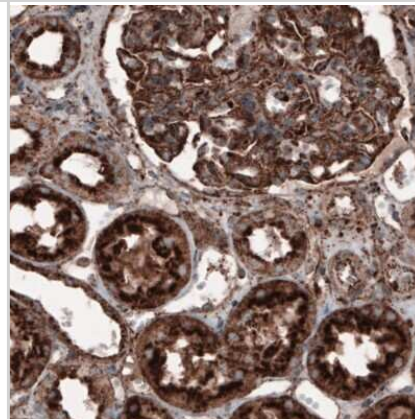
Western Blot: LAMP-1/CD107a Antibody (CL3482) [NBP2-61619] - Lane 1: Marker [kDa] 250, 130, 100, 70, 55, 35, 25, 15, 10  
Lane 2: Human cell line RT-4



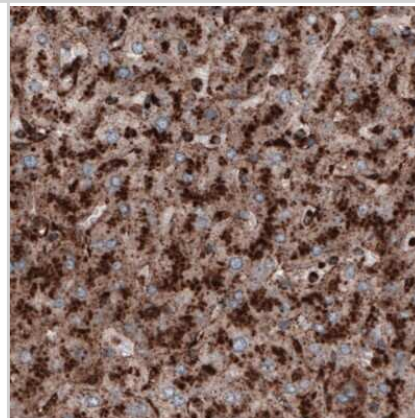
Immunohistochemistry-Paraffin: LAMP-1/CD107a Antibody (CL3482) [NBP2-61619] - Staining of human skeletal muscle shows only very low cytoplasmic immunoreactivity.



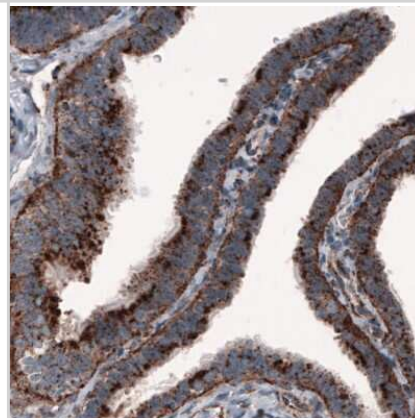
Immunohistochemistry-Paraffin: LAMP-1/CD107a Antibody (CL3482) [NBP2-61619] - Staining of human kidney shows strong granular cytoplasmic immunoreactivity in renal glomerulus and tubules cells.



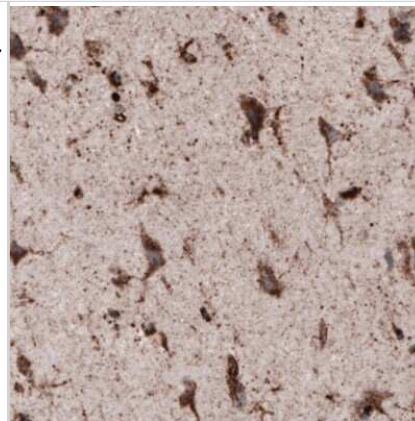
Immunohistochemistry-Paraffin: LAMP-1/CD107a Antibody (CL3482) [NBP2-61619] - Staining of human liver shows strong granular cytoplasmic positivity in hepatocytes.



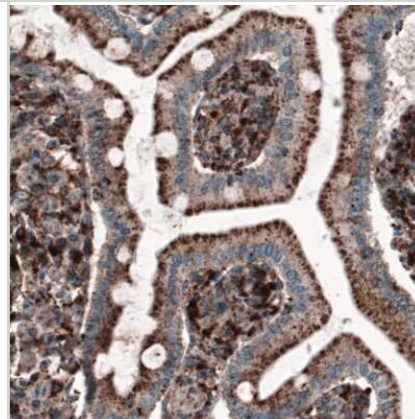
Immunohistochemistry-Paraffin: LAMP-1/CD107a Antibody (CL3482) [NBP2-61619] - Staining of human fallopian tube shows granular cytoplasmic immunoreactivity in epithelial cells.



Immunohistochemistry-Paraffin: LAMP-1/CD107a Antibody (CL3482) [NBP2-61619] - Staining of human cerebral cortex shows strong granular cytoplasmic positivity in neurons.



Immunohistochemistry-Paraffin: LAMP-1/CD107a Antibody (CL3482) [NBP2-61619] - Staining of human small intestine shows granular cytoplasmic immunoreactivity in glandular cells.



## Publications

Carotti S, Lettieri-Barbato D, Piemonte F Et al. Molecular and histological traits of reduced lysosomal acid lipase activity in the fatty liver Cell death & disease 2021-11-18 [PMID: 34795230] (WB, IHC-P)



### **Novus Biologicals USA**

10730 E. Briarwood Avenue  
Centennial, CO 80112  
USA  
Phone: 303.730.1950  
Toll Free: 1.888.506.6887  
Fax: 303.730.1966  
nb-customerservice@bio-techne.com

### **Bio-Techne Canada**

21 Canmotor Ave  
Toronto, ON M8Z 4E6  
Canada  
Phone: 905.827.6400  
Toll Free: 855.668.8722  
Fax: 905.827.6402  
canada.inquires@bio-techne.com

### **Bio-Techne Ltd**

19 Barton Lane  
Abingdon Science Park  
Abingdon, OX14 3NB, United Kingdom  
Phone: (44) (0) 1235 529449  
Free Phone: 0800 37 34 15  
Fax: (44) (0) 1235 533420  
info.EMEA@bio-techne.com

### **General Contact Information**

www.novusbio.com  
Technical Support: nb-technical@bio-techne.com  
Orders: nb-customerservice@bio-techne.com  
General: novus@novusbio.com

### **Products Related to NBP2-61619**

---

NBP2-61619PEP	LAMP-1/CD107a Recombinant Protein Antigen
HAF007	Goat anti-Mouse IgG Secondary Antibody [HRP]
NB720-B	Rabbit anti-Mouse IgG (H+L) Secondary Antibody [Biotin]
NBP1-97005-0.5mg	Mouse IgG1 Isotype Control (MG1)

---

### **Limitations**

This product is for research use only and is not approved for use in humans or in clinical diagnosis. Primary Antibodies are guaranteed for 1 year from date of receipt.

For more information on our 100% guarantee, please visit [www.novusbio.com/guarantee](http://www.novusbio.com/guarantee)

Earn gift cards/discounts by submitting a review: [www.novusbio.com/reviews/submit/NBP2-61619](http://www.novusbio.com/reviews/submit/NBP2-61619)

Earn gift cards/discounts by submitting a publication using this product:  
[www.novusbio.com/publications](http://www.novusbio.com/publications)

