

# Product Datasheet

## beta-III Tubulin Antibody (CL5814) - BSA Free NBP2-61431

Unit Size: 100 ul

Store at 4C short term. Aliquot and store at -20C long term. Avoid freeze-thaw cycles.

[www.novusbio.com](http://www.novusbio.com)



[technical@novusbio.com](mailto:technical@novusbio.com)

Protocols, Publications, Related Products, Reviews, Research Tools and Images at:  
[www.novusbio.com/NBP2-61431](http://www.novusbio.com/NBP2-61431)

Updated 2/27/2025 v.20.1

Earn rewards for product  
reviews and publications.

Submit a publication at [www.novusbio.com/publications](http://www.novusbio.com/publications)

Submit a review at [www.novusbio.com/reviews/destination/NBP2-61431](http://www.novusbio.com/reviews/destination/NBP2-61431)



**NBP2-61431**

beta-III Tubulin Antibody (CL5814) - BSA Free

**Product Information**

<b>Unit Size</b>	100 ul
<b>Concentration</b>	Concentrations vary lot to lot. See vial label for concentration. If unlisted please contact technical services.
<b>Storage</b>	Store at 4C short term. Aliquot and store at -20C long term. Avoid freeze-thaw cycles.
<b>Clonality</b>	Monoclonal
<b>Clone</b>	CL5814
<b>Preservative</b>	0.02% Sodium Azide
<b>Isotype</b>	IgG2b
<b>Purity</b>	Protein A purified
<b>Buffer</b>	PBS (pH 7.2) and 40% Glycerol

**Product Description**

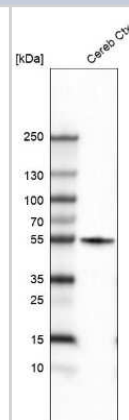
<b>Host</b>	Mouse
<b>Gene ID</b>	10381
<b>Gene Symbol</b>	TUBB3
<b>Species</b>	Human, Mouse, Rat
<b>Reactivity Notes</b>	Please note that this antibody is reactive to Mouse and derived from the same host, Mouse. Mouse-On-Mouse blocking reagent may be needed for IHC and ICC experiments to reduce high background signal. You can find these reagents under catalog numbers PK-2200-NB and MP-2400-NB. Please contact Technical Support if you have any questions
<b>Immunogen</b>	This antibody was developed using a synthetic peptide derived from Q13509, with the exact immunogen sequence remaining proprietary.

**Product Application Details**

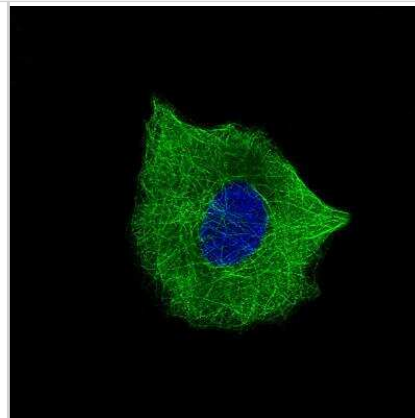
<b>Applications</b>	Western Blot, Immunocytochemistry/ Immunofluorescence, Immunohistochemistry, Immunohistochemistry-Paraffin
<b>Recommended Dilutions</b>	Western Blot 1 ug/ml, Immunohistochemistry 1:50000 - 1:100000, Immunocytochemistry/ Immunofluorescence 2-10 ug/ml, Immunohistochemistry-Paraffin 1:50000 - 1:100000
<b>Application Notes</b>	For IHC-Paraffin, HIER pH 6 retrieval is recommended. ICC/IF Fixation Permeabilization: PFA/Triton X-100

**Images**

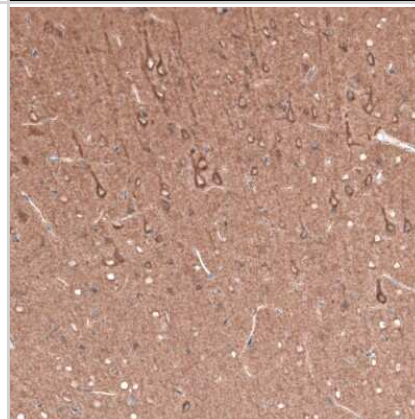
Western Blot: beta-III Tubulin Antibody (CL5814) [NBP2-61431] - Analysis in human cerebral cortex tissue.



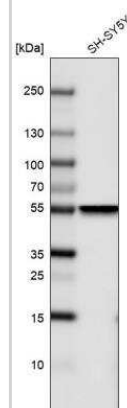
Immunocytochemistry/Immunofluorescence: beta-III Tubulin Antibody (CL5814) [NBP2-61431] - Staining of A549 cells. Nuclear probes are visualized in blue. Antibody staining is shown in green.



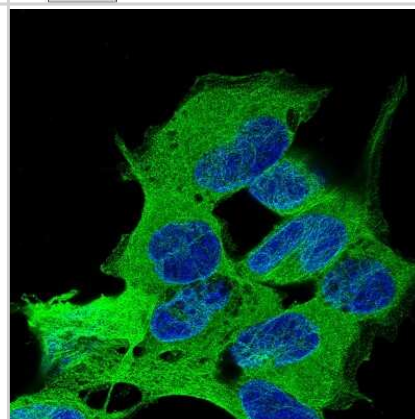
Immunohistochemistry-Paraffin: beta-III Tubulin Antibody (CL5814) [NBP2-61431] - Staining of rat cerebral cortex shows strong positivity in neuronal cell bodies and in neuropil.



Western Blot: beta-III Tubulin Antibody (CL5814) [NBP2-61431] - Analysis in human cell line SH-SY5Y.



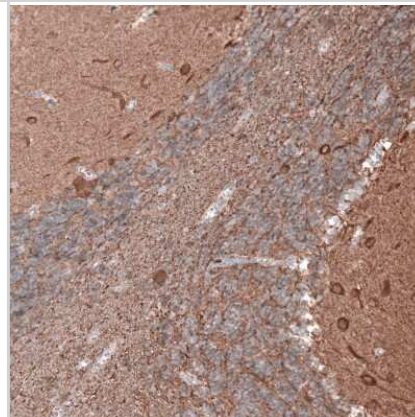
Immunocytochemistry/Immunofluorescence: beta-III Tubulin Antibody (CL5814) [NBP2-61431] - Staining of SH-SY5Y cells using the Anti-TUBB3 monoclonal antibody, showing specific staining on microtubules in green. Nuclear probe is visualized in blue. Antibody staining is shown in green.



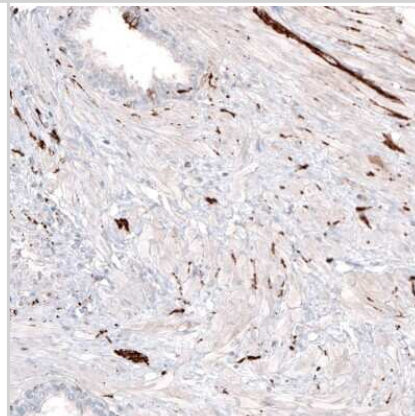
Immunohistochemistry-Paraffin: beta-III Tubulin Antibody (CL5814) [NBP2-61431] - Staining of human cerebral cortex shows strong positivity in neuropil as well as in neurons.



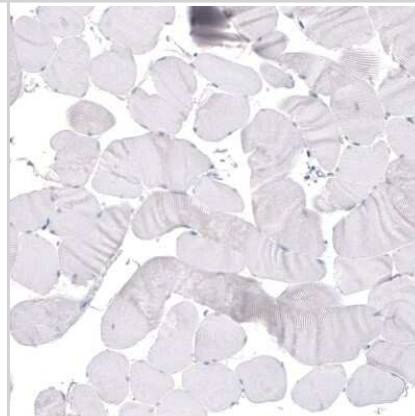
Immunohistochemistry-Paraffin: beta-III Tubulin Antibody (CL5814) [NBP2-61431] - Staining of human cerebellum shows strong positivity in both neuronal cell bodies and neuropil.



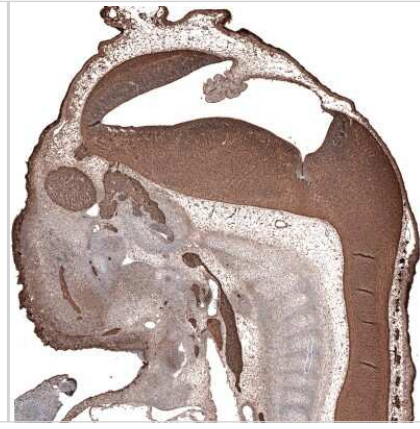
Immunohistochemistry-Paraffin: beta-III Tubulin Antibody (CL5814) [NBP2-61431] - Staining of human prostate shows strong positivity in the peripheral nerves.



Immunohistochemistry-Paraffin: beta-III Tubulin Antibody (CL5814) [NBP2-61431] - Staining of human skeletal muscle shows absence of positivity in striated muscle fibers as expected (negative control).



Immunohistochemistry-Paraffin: beta-III Tubulin Antibody (CL5814) [NBP2-61431] - Staining of mouse embryo E11 shows strong positivity in the developing central and peripheral nervous system.





### **Novus Biologicals USA**

10730 E. Briarwood Avenue  
Centennial, CO 80112  
USA  
Phone: 303.730.1950  
Toll Free: 1.888.506.6887  
Fax: 303.730.1966  
nb-customerservice@bio-techne.com

### **Bio-Techne Canada**

21 Canmotor Ave  
Toronto, ON M8Z 4E6  
Canada  
Phone: 905.827.6400  
Toll Free: 855.668.8722  
Fax: 905.827.6402  
canada.inquires@bio-techne.com

### **Bio-Techne Ltd**

19 Barton Lane  
Abingdon Science Park  
Abingdon, OX14 3NB, United Kingdom  
Phone: (44) (0) 1235 529449  
Free Phone: 0800 37 34 15  
Fax: (44) (0) 1235 533420  
info.EMEA@bio-techne.com

### **General Contact Information**

www.novusbio.com  
Technical Support: nb-technical@bio-techne.com  
Orders: nb-customerservice@bio-techne.com  
General: novus@novusbio.com

### **Products Related to NBP2-61431**

---

HAF007	Goat anti-Mouse IgG Secondary Antibody [HRP]
NB720-B	Rabbit anti-Mouse IgG (H+L) Secondary Antibody [Biotin]
NBP2-27231	Mouse IgG2b Isotype Control (MPC-11)
NBP2-22901	Recombinant Human beta-III Tubulin His Protein

---

### **Limitations**

This product is for research use only and is not approved for use in humans or in clinical diagnosis. Primary Antibodies are guaranteed for 1 year from date of receipt.

For more information on our 100% guarantee, please visit [www.novusbio.com/guarantee](http://www.novusbio.com/guarantee)

Earn gift cards/discounts by submitting a review: [www.novusbio.com/reviews/submit/NBP2-61431](http://www.novusbio.com/reviews/submit/NBP2-61431)

Earn gift cards/discounts by submitting a publication using this product:  
[www.novusbio.com/publications](http://www.novusbio.com/publications)

