

Product Datasheet

MAP2 Antibody (CL5420) - BSA Free NBP2-61417

Unit Size: 100 ul

Store at 4C short term. Aliquot and store at -20C long term. Avoid freeze-thaw cycles.

www.novusbio.com



technical@novusbio.com

Protocols, Publications, Related Products, Reviews, Research Tools and Images at:
www.novusbio.com/NBP2-61417

Updated 2/27/2025 v.20.1

Earn rewards for product
reviews and publications.

Submit a publication at www.novusbio.com/publications

Submit a review at www.novusbio.com/reviews/destination/NBP2-61417



NBP2-61417

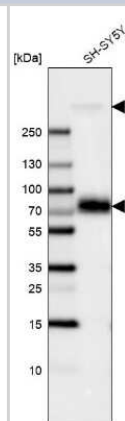
MAP2 Antibody (CL5420) - BSA Free

Product Information	
Unit Size	100 ul
Concentration	1 mg/ml
Storage	Store at 4C short term. Aliquot and store at -20C long term. Avoid freeze-thaw cycles.
Clonality	Monoclonal
Clone	CL5420
Preservative	0.02% Sodium Azide
Isotype	IgG1
Purity	Protein A purified
Buffer	PBS (pH 7.2) and 40% Glycerol
Target Molecular Weight	199 kDa
Product Description	
Host	Mouse
Gene ID	4133
Gene Symbol	MAP2
Species	Human
Reactivity Notes	Please note that this antibody is reactive to Mouse and derived from the same host, Mouse. Mouse-On-Mouse blocking reagent may be needed for IHC and ICC experiments to reduce high background signal. You can find these reagents under catalog numbers PK-2200-NB and MP-2400-NB. Please contact Technical Support if you have any questions.
Immunogen	This antibody was developed using a recombinant protein derived from P11137, with the exact immunogen sequence remaining proprietary.
Product Application Details	
Applications	Western Blot, Immunocytochemistry/ Immunofluorescence, Immunohistochemistry, Immunohistochemistry-Paraffin, Single Cell Western
Recommended Dilutions	Western Blot 1 ug/ml, Immunohistochemistry 1:1000 - 1:2500, Immunocytochemistry/ Immunofluorescence 2-10 ug/ml, Immunohistochemistry-Paraffin 1:1000 - 1:2500, Single Cell Western 100 ug/ml
Application Notes	For IHC-Paraffin, HIER pH 6 retrieval is recommended. ICC/IF Fixation Permeabilization: PFA/Triton X-100

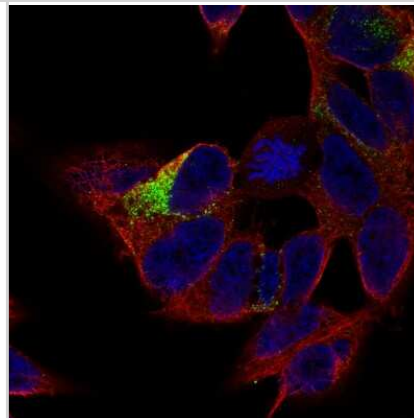


Images

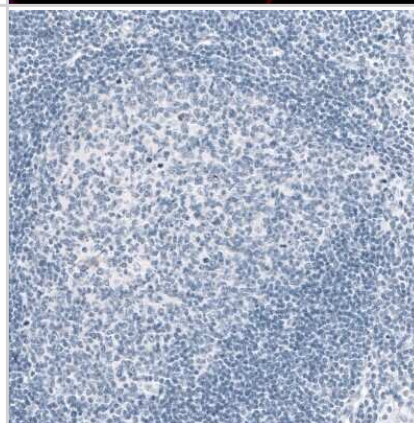
Western Blot: MAP2 Antibody (CL5420) [NBP2-61417] - Analysis in human cell line SH-SY5Y. Observed molecular weight 89 and 280 kDa.



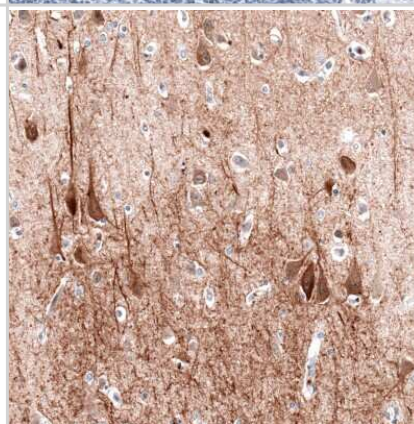
Immunocytochemistry/Immunofluorescence: MAP2 Antibody (CL5420) [NBP2-61417] - Staining of SH-SY5Y cells using the Anti-MAP2 monoclonal antibody, showing specific staining in the cytosol and in microtubules in green. Microtubule and nuclear probes are visualized in red and blue, respectively (where available). Antibody staining is shown in green.



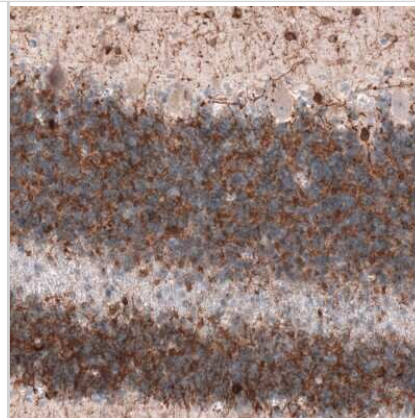
Immunohistochemistry-Paraffin: MAP2 Antibody (CL5420) [NBP2-61417] - Staining of human tonsil shows absence of positivity in lymphoid cells as expected (negative control).



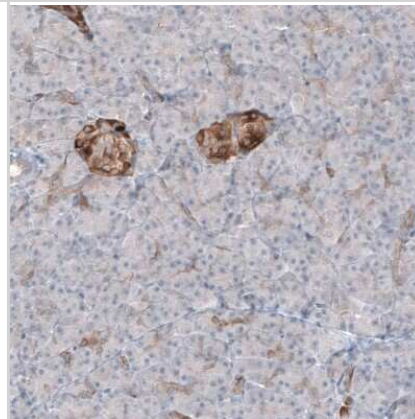
Immunohistochemistry-Paraffin: MAP2 Antibody (CL5420) [NBP2-61417] - Staining of human cerebral cortex shows cytoplasmic immunoreactivity in neurons, as well as positivity in neuropil.



Immunohistochemistry-Paraffin: MAP2 Antibody (CL5420) [NBP2-61417]
- Staining of human cerebellum shows positivity in a subset of neurons.



Immunohistochemistry-Paraffin: MAP2 Antibody (CL5420) [NBP2-61417]
- Staining of human pancreas shows cytoplasmic immunoreactivity in pancreatic islets.





Novus Biologicals USA

10730 E. Briarwood Avenue
Centennial, CO 80112
USA
Phone: 303.730.1950
Toll Free: 1.888.506.6887
Fax: 303.730.1966
nb-customerservice@bio-techne.com

Bio-Techne Canada

21 Canmotor Ave
Toronto, ON M8Z 4E6
Canada
Phone: 905.827.6400
Toll Free: 855.668.8722
Fax: 905.827.6402
canada.inquires@bio-techne.com

Bio-Techne Ltd

19 Barton Lane
Abingdon Science Park
Abingdon, OX14 3NB, United Kingdom
Phone: (44) (0) 1235 529449
Free Phone: 0800 37 34 15
Fax: (44) (0) 1235 533420
info.EMEA@bio-techne.com

General Contact Information

www.novusbio.com
Technical Support: nb-technical@bio-techne.com
Orders: nb-customerservice@bio-techne.com
General: novus@novusbio.com

Products Related to NBP2-61417

NBP2-61417PEP	MAP2 Recombinant Protein Antigen
HAF007	Goat anti-Mouse IgG Secondary Antibody [HRP]
NB720-B	Rabbit anti-Mouse IgG (H+L) Secondary Antibody [Biotin]
NBP1-97005-0.5mg	Mouse IgG1 Isotype Control (MG1)

Limitations

This product is for research use only and is not approved for use in humans or in clinical diagnosis. Primary Antibodies are guaranteed for 1 year from date of receipt.

For more information on our 100% guarantee, please visit www.novusbio.com/guarantee

Earn gift cards/discounts by submitting a review: www.novusbio.com/reviews/submit/NBP2-61417

Earn gift cards/discounts by submitting a publication using this product:
www.novusbio.com/publications

