

Product Datasheet

Recombinant Human IGF-I/IGF-1 LR3 Protein NBP2-61314-1mg

Unit Size: 1 mg

Store at -20 to -70C as supplied. After reconstitution, store at 2 to 8C for 1 month and at -20 to -70C for long term storage. Avoid repeated freeze-thaw cycles.

www.novusbio.com



technical@novusbio.com

Protocols, Publications, Related Products, Reviews, Research Tools and Images at:
www.novusbio.com/NBP2-61314

Updated 10/23/2024 v.20.1

Earn rewards for product
reviews and publications.

Submit a publication at www.novusbio.com/publications

Submit a review at www.novusbio.com/reviews/destination/NBP2-61314



NBP2-61314-1mg

Recombinant Human IGF-I/IGF-1 LR3 Protein

Product Information

Unit Size	1 mg
Concentration	Lyoph
Storage	Store at -20 to -70C as supplied. After reconstitution, store at 2 to 8C for 1 month and at -20 to -70C for long term storage. Avoid repeated freeze-thaw cycles.
Preservative	No Preservative
Reconstitution Instructions	Recommended to centrifuge prior to opening. Reconstitute in sterile distilled water or aqueous buffer containing 0.1% BSA to a concentration of 0.1-1.0mg/mL. Apportion stock solutions into working aliquots and store at <-20C.
Purity	>98%, by SDS-PAGE
Buffer	Lyophilized from a 0.2 um filtered concentrated solution in 20 mM PB, pH 7.2.
Target Molecular Weight	9.1 kDa

Product Description

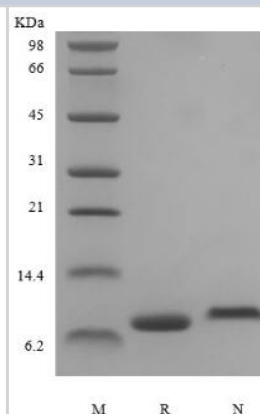
Description	A single non-glycosylated polypeptide chain containing 83 amino acids corresponding to IGF-I/IGF-1 Source: <i>E. coli</i> Amino Acid Sequence: MFPAMPLSSL FVNGPRTLCLG AELVDALQFV CGDRGFYFNK PTGYGSSSR APQTGIVDEC CFRSCDLRRL EMYCAPLKPA KSA
Gene ID	3479
Gene Symbol	IGF1
Species	Human
Details of Functionality	Assay 1: Fully biologically active when compared to standard. Measured in a serum-free cell proliferation assay using human MCF-7 cells. The ED50 for this effect is 0.3-1.5 ng/ml, corresponding to a specific activity of > 6.7 x 10 ⁵ U/mg. Assay 2: Fully biologically active when compared to standard. The ED50 as determined by the stimulation of protein synthesis using rat L6 myoblasts is less than 10 ng/ml, corresponding to a specific activity of > 1.0 x 10 ⁵ U/mg.
Endotoxin Note	Less than 0.01 EU/ug of IGF-I/IGF-1 as determined by LAL method.

Product Application Details

Applications	SDS-Page, Bioactivity
Recommended Dilutions	SDS-Page, Bioactivity

Images

SDS-Page: Recombinant Human IGF-I/IGF-1 LR3 Protein [NBP2-61314]





Novus Biologicals USA

10730 E. Briarwood Avenue
Centennial, CO 80112
USA
Phone: 303.730.1950
Toll Free: 1.888.506.6887
Fax: 303.730.1966
nb-customerservice@bio-techne.com

Bio-Techne Canada

21 Canmotor Ave
Toronto, ON M8Z 4E6
Canada
Phone: 905.827.6400
Toll Free: 855.668.8722
Fax: 905.827.6402
canada.inquires@bio-techne.com

Bio-Techne Ltd

19 Barton Lane
Abingdon Science Park
Abingdon, OX14 3NB, United Kingdom
Phone: (44) (0) 1235 529449
Free Phone: 0800 37 34 15
Fax: (44) (0) 1235 533420
info.EMEA@bio-techne.com

General Contact Information

www.novusbio.com
Technical Support: nb-technical@bio-techne.com
Orders: nb-customerservice@bio-techne.com
General: novus@novusbio.com

Products Related to NBP2-61314-1mg

NBP2-35000-100ug	Recombinant Human IGF-I/IGF-1 Protein
236-EG-200	EGF [Unconjugated]
291-G1-200	IGF-I/IGF-1 [Unconjugated]
M6000B-1	IL-6 [HRP]

Limitations

This product is for research use only and is not approved for use in humans or in clinical diagnosis. Peptides and proteins are guaranteed for 3 months from date of receipt.

For more information on our 100% guarantee, please visit www.novusbio.com/guarantee

Earn gift cards/discounts by submitting a review: www.novusbio.com/reviews/submit/NBP2-61314

Earn gift cards/discounts by submitting a publication using this product:
www.novusbio.com/publications

