

Product Datasheet

Connexin 30/GJB6 Antibody (CL4540) - BSA Free NBP2-61141

Unit Size: 100 ul

Store at 4C short term. Aliquot and store at -20C long term. Avoid freeze-thaw cycles.

www.novusbio.com



technical@novusbio.com

Publications: 1

Protocols, Publications, Related Products, Reviews, Research Tools and Images at:
www.novusbio.com/NBP2-61141

Updated 2/27/2025 v.20.1

Earn rewards for product
reviews and publications.

Submit a publication at www.novusbio.com/publications

Submit a review at www.novusbio.com/reviews/destination/NBP2-61141



NBP2-61141

Connexin 30/GJB6 Antibody (CL4540) - BSA Free

Product Information	
Unit Size	100 ul
Concentration	Concentrations vary lot to lot. See vial label for concentration. If unlisted please contact technical services.
Storage	Store at 4C short term. Aliquot and store at -20C long term. Avoid freeze-thaw cycles.
Clonality	Monoclonal
Clone	CL4540
Preservative	0.02% Sodium Azide
Isotype	IgG2a
Purity	Protein A purified
Buffer	PBS (pH 7.2) and 40% Glycerol

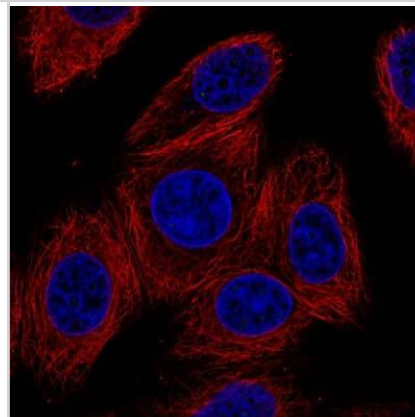
Product Description	
Host	Mouse
Gene ID	10804
Gene Symbol	GJB6
Species	Human
Reactivity Notes	Mouse, Rat (85%).
Immunogen	This antibody was developed using a synthetic peptide derived from O95452, with the exact immunogen sequence remaining proprietary.

Product Application Details	
Applications	Immunocytochemistry/ Immunofluorescence, Immunohistochemistry
Recommended Dilutions	Immunohistochemistry Reactivity reported in (PMID: 31205407) , Immunocytochemistry/ Immunofluorescence 2-10 ug/ml
Application Notes	ICC/IF Fixation Permeabilization: Use PFA/Triton X-100.

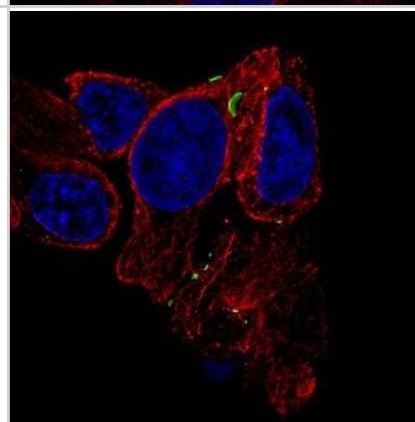


Images

Immunocytochemistry/Immunofluorescence: Connexin 30/GJB6 Antibody (CL4540) [NBP2-61141] - Staining of MCF7 cells using the Anti-GJB6 monoclonal antibody, showing no specific staining of cell junctions. MCF7 cells serves as a negative control based on RNA-seq values. Microtubule- and nuclear probes are visualized in red and blue, respectively (where available). Antibody staining is shown in green.



Immunocytochemistry/Immunofluorescence: Connexin 30/GJB6 Antibody (CL4540) [NBP2-61141] - Staining of RT-4 cells using the Anti-GJB6 monoclonal antibody, showing specific staining of cell junctions in green. Microtubule- and nuclear probes are visualized in red and blue, respectively (where available). Antibody staining is shown in green.



Publications

Yu H, Miao Y, Chen W, Qi X et al. Expressional and functional involvement of gap junctions in aqueous humor outflow into the ocular trabecular meshwork of the anterior chamber Molecular Vision 2019-04-26 [PMID: 31205407] (IF/IHC, Human)



Novus Biologicals USA

10730 E. Briarwood Avenue
Centennial, CO 80112
USA
Phone: 303.730.1950
Toll Free: 1.888.506.6887
Fax: 303.730.1966
nb-customerservice@bio-techne.com

Bio-Techne Canada

21 Canmotor Ave
Toronto, ON M8Z 4E6
Canada
Phone: 905.827.6400
Toll Free: 855.668.8722
Fax: 905.827.6402
canada.inquires@bio-techne.com

Bio-Techne Ltd

19 Barton Lane
Abingdon Science Park
Abingdon, OX14 3NB, United Kingdom
Phone: (44) (0) 1235 529449
Free Phone: 0800 37 34 15
Fax: (44) (0) 1235 533420
info.EMEA@bio-techne.com

General Contact Information

www.novusbio.com
Technical Support: nb-technical@bio-techne.com
Orders: nb-customerservice@bio-techne.com
General: novus@novusbio.com

Products Related to NBP2-61141

HAF007	Goat anti-Mouse IgG Secondary Antibody [HRP]
NB720-B	Rabbit anti-Mouse IgG (H+L) Secondary Antibody [Biotin]
NBP1-96778	Mouse IgG2a Isotype Control (M2A)
H00010804-Q01-10ug	Recombinant Human Connexin 30/GJB6 GST (N-Term) Protein

Limitations

This product is for research use only and is not approved for use in humans or in clinical diagnosis. Primary Antibodies are guaranteed for 1 year from date of receipt.

For more information on our 100% guarantee, please visit www.novusbio.com/guarantee

Earn gift cards/discounts by submitting a review: www.novusbio.com/reviews/submit/NBP2-61141

Earn gift cards/discounts by submitting a publication using this product:
www.novusbio.com/publications

