

Product Datasheet

Sodium Potassium ATPase Alpha 1 Antibody (464.6) - BSA Free NBP2-61137

Unit Size: 0.1 mg

Store at 4C short term. Aliquot and store at -20C long term. Avoid freeze-thaw cycles.

www.novusbio.com



technical@novusbio.com

Protocols, Publications, Related Products, Reviews, Research Tools and Images at:
www.novusbio.com/NBP2-61137

Updated 10/23/2024 v.20.1

Earn rewards for product reviews and publications.

Submit a publication at www.novusbio.com/publications

Submit a review at www.novusbio.com/reviews/destination/NBP2-61137



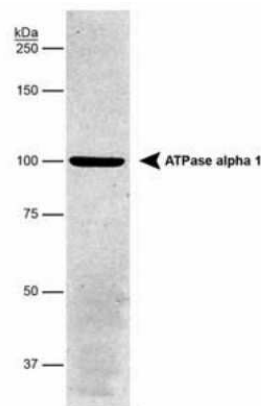
NBP2-61137

Sodium Potassium ATPase Alpha 1 Antibody (464.6) - BSA Free

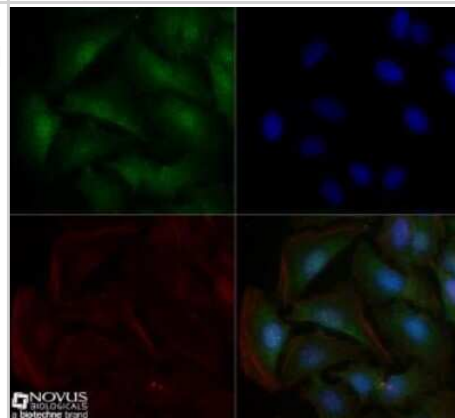
Product Information	
Unit Size	0.1 mg
Concentration	1 mg/ml
Storage	Store at 4C short term. Aliquot and store at -20C long term. Avoid freeze-thaw cycles.
Clonality	Monoclonal
Clone	464.6
Preservative	0.02% Sodium Azide
Isotype	IgG1 Kappa
Purity	Protein G purified
Buffer	PBS
Target Molecular Weight	112 kDa
Product Description	
Host	Mouse
Gene ID	476
Gene Symbol	ATP1A1
Species	Human, Mouse, Rat, Porcine, Bovine, Canine, Drosophila, Guinea Pig, Primate, Rabbit, Sheep, Xenopus, Yeast
Marker	Plasma Membrane Marker
Specificity/Sensitivity	This is specific for Na,K-ATPase alpha 1 subunit.
Immunogen	Purified Sodium Potassium ATPase Alpha 1 from rabbit renal outer medulla. [UniProt# Q9N0Z6]
Product Application Details	
Applications	Western Blot, Flow Cytometry, Immunocytochemistry/ Immunofluorescence, Immunohistochemistry, Immunohistochemistry-Frozen, Immunohistochemistry-Paraffin, Immunoprecipitation
Recommended Dilutions	Western Blot 1:1000-1:10000, Flow Cytometry 1:50 - 1:200, Immunohistochemistry 1:200, Immunocytochemistry/ Immunofluorescence 1:50 - 1:1000, Immunoprecipitation reported in scientific literature (PMID 27748972), Immunohistochemistry-Paraffin 1:200, Immunohistochemistry-Frozen reported in scientific literature (PMID 26941236)
Application Notes	In Western Blot, a distinct band at ~ 112 kDa is seen. Do not boil the sample prior to loading on the gel for Western Blot (60 degrees Celsius appears to work fine).

Images

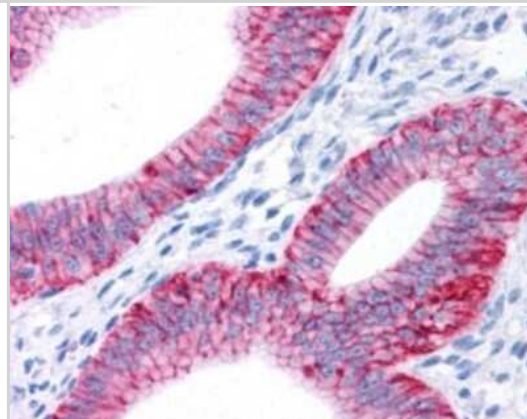
Western Blot: Sodium Potassium ATPase Alpha 1 Antibody (464.6) - Purified [NBP2-61137] - Analysis detecting Na, K-ATPase (alpha) in porcine proximal tubule protein. Image using the standard format of this product.



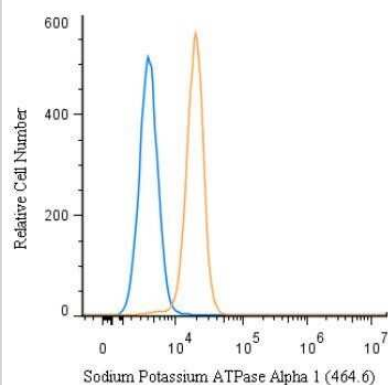
Immunocytochemistry/Immunofluorescence: Sodium Potassium ATPase Alpha 1 Antibody (464.6) - Purified [NBP2-61137] - HeLa cells were fixed for 10 minutes using 10% formalin and then permeabilized for 5 minutes using 1X TBS + 0.5% Triton X-100. The cells were incubated with anti-Sodium Potassium ATPase Alpha 1 (464.6) at 10 ug/ml overnight at 4C and detected with an anti-mouse DyLight 488 (Green) at a 1:500 dilution. Actin was detected with Phalloidin 568 (Red) at a 1:200 dilution. Nuclei were counterstained with DAPI (Blue). Cells were imaged using a 40X objective.



Immunohistochemistry: Sodium Potassium ATPase Alpha 1 Antibody (464.6) - Purified [NBP2-61137] - Staining of human endometrial glands within the uterus using NB300-146. Note the absence of staining in the surrounding myometrial smooth muscle.

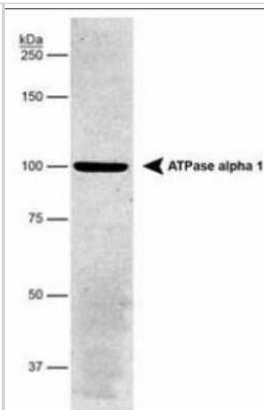


Flow Cytometry: Sodium Potassium ATPase Alpha 1 Antibody (464.6) - Purified [NBP2-61137] - An intracellular stain was performed on A549 cells with NB300-146 and a matched isotype control. Cells were fixed with 4% PFA and then permeabilized with 0.1% saponin. Cells were incubated in an antibody dilution of 1 ug/mL for 30 minutes at room temperature, followed by mouse F(ab)2 IgG (H+L) APC-conjugated secondary antibody (F0101B, R&D Systems). Image using the standard format of this product.

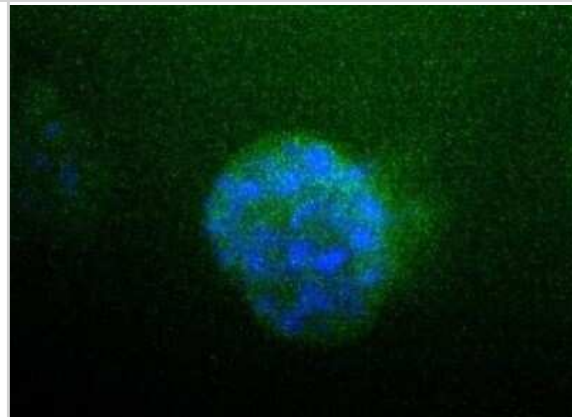


Copyright © 2018 Novus Biologicals

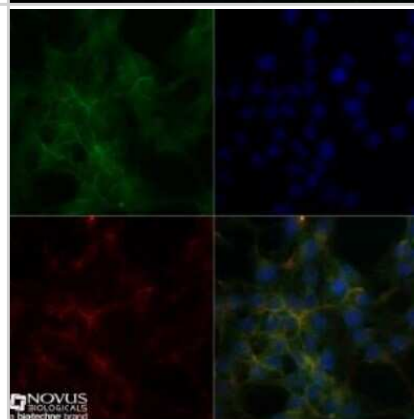
Western Blot: Sodium Potassium ATPase Alpha 1 Antibody (464.6) - Purified [NBP2-61137] - Analysis detecting Na, K-ATPase (alpha) in porcine proximal tubule protein.



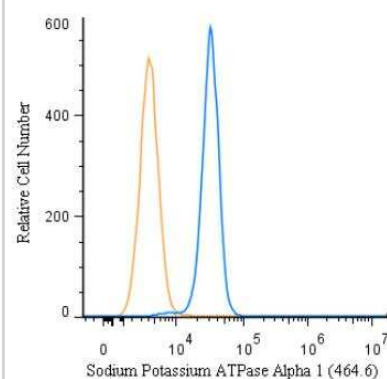
Immunocytochemistry/Immunofluorescence: Sodium Potassium ATPase Alpha 1 Antibody (464.6) - Purified [NBP2-61137] - Detection of ATPA1 (Green) in HepG2 cells using NB300-146. Nuclei (Blue) were counterstained using Hoechst 33258.



Immunocytochemistry/Immunofluorescence: Sodium Potassium ATPase Alpha 1 Antibody (464.6) - Purified [NBP2-61137] - Hek293 cells were fixed for 10 minutes using 10% formalin and then permeabilized for 5 minutes using 1X TBS + 0.5% Triton X-100. The cells were incubated with anti-Sodium Potassium ATPase Alpha 1 (464.6) at 10 ug/ml overnight at 4C and detected with an anti-mouse DyLight 488 (Green) at a 1:500 dilution. Actin was detected with Phalloidin 568 (Red) at a 1:200 dilution. Nuclei were counterstained with DAPI (Blue). Cells were imaged using a 40X objective.

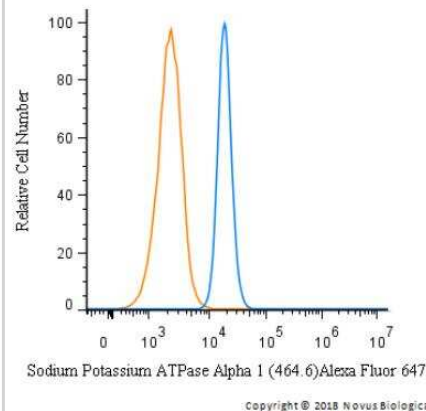


Flow Cytometry: Sodium Potassium ATPase Alpha 1 Antibody (464.6) - Purified [NBP2-61137] - An intracellular stain was performed on A549 cells with - Purified NBP2-61137 and a matched isotype control. Cells were fixed with 4% PFA and then permeabilized with 0.1% saponin. Cells were incubated in an antibody dilution of 1 ug/mL for 30 minutes at room temperature, followed by mouse F(ab)2 IgG (H+L) APC-conjugated secondary antibody (F0101B, R&D Systems). Image using the Purified form of this antibody.



Copyright © 2018 Novus Biologicals

Flow Cytometry: Sodium Potassium ATPase Alpha 1 Antibody (464.6) - Purified [NBP2-61137] - An intracellular stain was performed on A549 cells with NBP2-61137AF647 (Blue) and a matched isotype control (Orange). Cells were fixed with 4% PFA and then permeabilized with 0.1% saponin. Cells were incubated in an antibody dilution of 2.5 ug/mL for 30 minutes at room temperature. Both antibodies were conjugated to Alexa Fluor 647. Image using the Alexa Fluor 647 form of this antibody.





Novus Biologicals USA

10730 E. Briarwood Avenue
Centennial, CO 80112
USA
Phone: 303.730.1950
Toll Free: 1.888.506.6887
Fax: 303.730.1966
nb-customerservice@bio-techne.com

Bio-Techne Canada

21 Canmotor Ave
Toronto, ON M8Z 4E6
Canada
Phone: 905.827.6400
Toll Free: 855.668.8722
Fax: 905.827.6402
canada.inquires@bio-techne.com

Bio-Techne Ltd

19 Barton Lane
Abingdon Science Park
Abingdon, OX14 3NB, United Kingdom
Phone: (44) (0) 1235 529449
Free Phone: 0800 37 34 15
Fax: (44) (0) 1235 533420
info.EMEA@bio-techne.com

General Contact Information

www.novusbio.com
Technical Support: nb-technical@bio-techne.com
Orders: nb-customerservice@bio-techne.com
General: novus@novusbio.com

Products Related to NBP2-61137

HAF007	Goat anti-Mouse IgG Secondary Antibody [HRP]
NB720-B	Rabbit anti-Mouse IgG (H+L) Secondary Antibody [Biotin]
NBP1-43319-0.5mg	Mouse IgG1 Kappa Isotype Control (P3.6.2.8.1)
NBL1-07807	Sodium Potassium ATPase Alpha 1 Overexpression Lysate

Limitations

This product is for research use only and is not approved for use in humans or in clinical diagnosis. Primary Antibodies are guaranteed for 1 year from date of receipt.

For more information on our 100% guarantee, please visit www.novusbio.com/guarantee

Earn gift cards/discounts by submitting a review: www.novusbio.com/reviews/submit/NBP2-61137

Earn gift cards/discounts by submitting a publication using this product:
www.novusbio.com/publications

